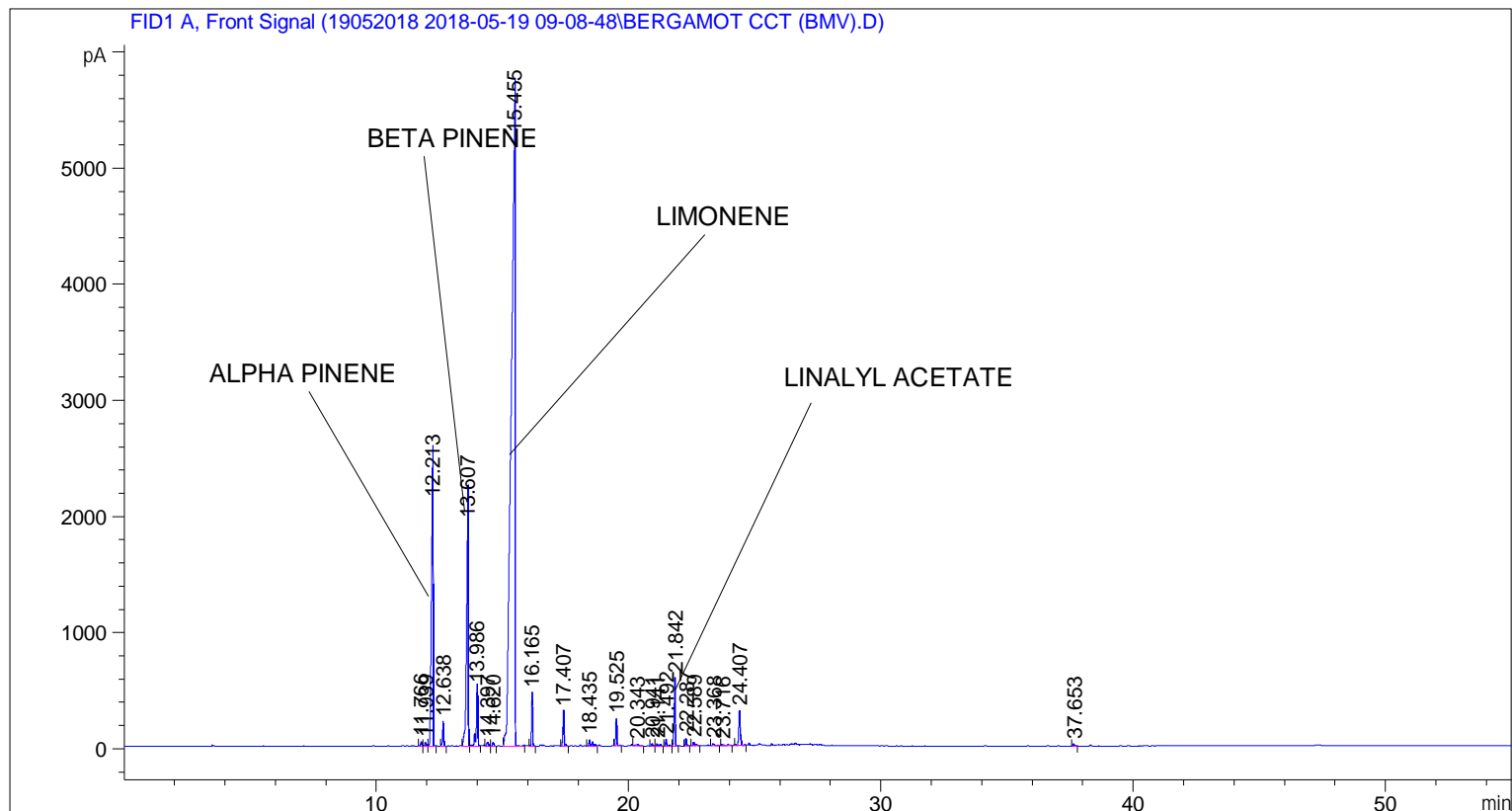


```

=====
Acq. Operator   : SYSTEM                               Seq. Line :    3
Acq. Instrument : BMV_NEW_GC_7820                     Location  : Vial 103
Injection Date  : 5/19/2018 11:56:00 AM                Inj       :    1
                                                    Inj Volume: 0.5 µl

Acq. Method     : C:\CHEM32\2\DATA\19052018 2018-05-19 09-08-48\UNIVERSAL F.M
Last changed    : 5/19/2018 9:08:56 AM by SYSTEM
Analysis Method : C:\CHEM32\2\DATA\19052018 2018-05-19 09-08-48\UNIVERSAL F.M (Sequence
Method)
Last changed    : 5/28/2018 3:04:27 PM by SYSTEM
                  (modified after loading)
=====
  
```



=====
 Area Percent Report
 =====

```

Sorted By       :      Signal
Multiplier      :      1.0000
Dilution       :      1.0000
Do not use Multiplier & Dilution Factor with ISTDs
  
```

Signal 1: FID1 A, Front Signal

Peak #	RetTime [min]	Type	Width [min]	Area [pA*s]	Height [pA]	Area %
1	11.766	BV	0.0574	111.46809	34.74433	0.11918
2	11.939	VV	0.0635	106.45621	28.57542	0.11382
3	12.213	VB	0.0896	1.17629e4	2093.38940	12.57619
4	12.638	BB	0.0566	638.24170	203.41620	0.68237
5	13.607	BV	0.0832	1.03616e4	1913.54028	11.07800
6	13.986	VB	0.0646	2057.83545	493.74237	2.20012
7	14.397	BV	0.0699	134.21178	31.37395	0.14349

Sample Name: BERGAMOT CCT (BMV)

Peak #	RetTime [min]	Type	Width [min]	Area [pA*s]	Height [pA]	Area %
8	14.620	VB	0.0631	109.03208	29.48761	0.11657
9	15.455	BB	0.1592	6.06753e4	5237.29395	64.87070
10	16.165	BB	0.0536	1310.63440	454.56335	1.40126
11	17.407	BB	0.0576	955.04095	296.30853	1.02108
12	18.435	BB	0.0935	324.11896	51.45362	0.34653
13	19.525	BB	0.0559	717.26611	233.15221	0.76686
14	20.343	BB	0.1377	111.95663	12.84058	0.11970
15	20.941	BV	0.0624	68.55563	18.86893	0.07330
16	21.141	VB	0.0878	104.84952	17.04345	0.11210
17	21.492	BV	0.0627	199.96072	54.66052	0.21379
18	21.842	VB	0.0553	1966.68237	584.18921	2.10267
19	22.287	BB	0.0557	211.88443	69.18305	0.22654
20	22.589	BB	0.0746	159.20940	31.67400	0.17022
21	23.368	BB	0.0957	99.91737	16.25463	0.10683
22	23.716	BB	0.1081	122.83581	14.91479	0.13133
23	24.407	BB	0.0661	1166.21777	295.29214	1.24686
24	37.653	BB	0.0613	56.60754	16.00977	0.06052

Totals : 9.35327e4 1.22320e4

=====
*** End of Report ***