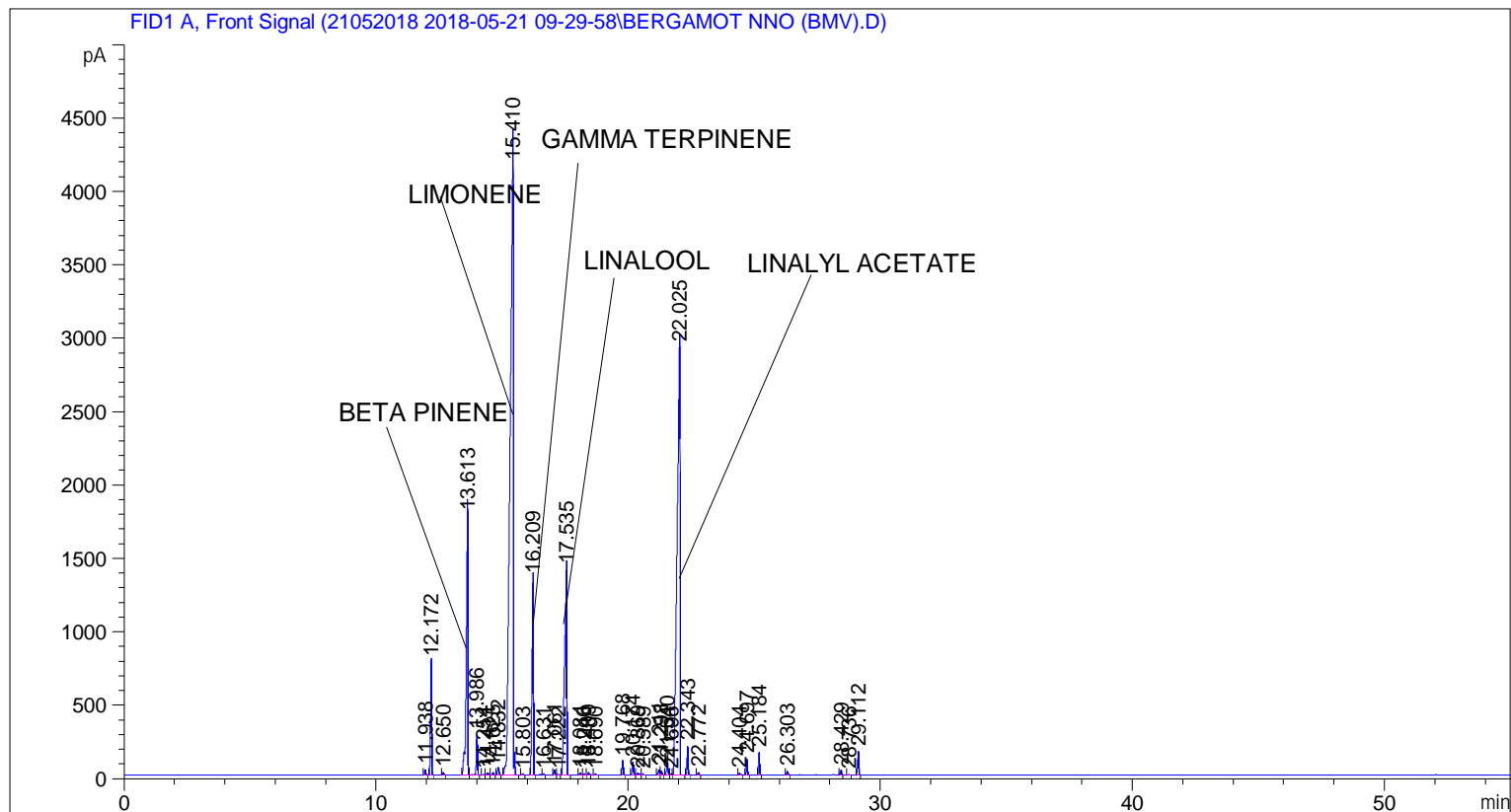


```

=====
Acq. Operator   : SYSTEM                               Seq. Line :    1
Acq. Instrument : BMV_NEW_GC_7820                     Location  : Vial 101
Injection Date  : 5/21/2018 9:52:43 AM                Inj       :    1
                                                    Inj Volume: 0.5 µl

Acq. Method     : C:\CHEM32\2\DATA\21052018 2018-05-21 09-29-58\UNIVERSAL F.M
Last changed    : 5/21/2018 9:30:04 AM by SYSTEM
Analysis Method : C:\CHEM32\2\DATA\21052018 2018-05-21 09-29-58\UNIVERSAL F.M (Sequence
Method)
Last changed    : 5/28/2018 3:24:25 PM by SYSTEM
                  (modified after loading)
  
```



=====
 Area Percent Report
 =====

```

Sorted By      :      Signal
Multiplier     :      1.0000
Dilution       :      1.0000
Do not use Multiplier & Dilution Factor with ISTDs
  
```

Signal 1: FID1 A, Front Signal

Peak #	RetTime [min]	Type	Width [min]	Area [pA*s]	Height [pA]	Area %
1	11.938	BB	0.0472	110.75304	38.90551	0.12264
2	12.172	BB	0.0492	2323.74561	771.16876	2.57322
3	12.650	BB	0.0509	50.18981	15.86768	0.05558
4	13.613	BV	0.0659	8151.46680	1763.64380	9.02658
5	13.986	VB	0.0506	859.07733	273.76172	0.95131
6	14.254	BV	0.0561	19.42209	5.37669	0.02151
7	14.411	VV	0.0747	61.62296	13.63637	0.06824

Peak #	RetTime [min]	Type	Width [min]	Area [pA*s]	Height [pA]	Area %
8	14.625	VB	0.0510	55.26535	17.41422	0.06120
9	14.832	BB	0.0654	212.27443	52.28929	0.23506
10	15.410	BB	0.1145	3.72218e4	4154.32910	41.21778
11	15.803	BB	0.0488	24.08730	8.07596	0.02667
12	16.209	BB	0.0585	5112.43896	1339.63831	5.66129
13	16.631	BB	0.0514	24.51710	7.26669	0.02715
14	17.061	BV	0.0486	102.05454	32.54056	0.11301
15	17.222	VB	0.0621	20.13862	4.88876	0.02230
16	17.535	BB	0.0892	8789.02539	1401.62646	9.73259
17	18.084	BB	0.0574	45.63456	12.25353	0.05053
18	18.240	BB	0.0508	35.62599	10.70267	0.03945
19	18.409	BB	0.0567	70.04516	18.26210	0.07756
20	18.690	BB	0.0448	16.83146	6.37720	0.01864
21	19.768	BB	0.0507	302.41245	96.23765	0.33488
22	20.174	BB	0.0592	319.50659	86.33022	0.35381
23	20.369	BB	0.0907	70.79745	11.05969	0.07840
24	20.589	BB	0.0491	19.81227	6.57747	0.02194
25	21.211	BV	0.0645	152.55013	36.68596	0.16893
26	21.298	VB	0.0562	94.07082	24.81175	0.10417
27	21.540	BV	0.0674	340.94107	80.47760	0.37754
28	21.696	VV	0.0619	25.90306	6.31065	0.02868
29	22.025	VB	0.1124	2.35575e4	2911.06787	26.08650
30	22.343	BB	0.0457	535.10034	196.89307	0.59255
31	22.772	BB	0.0522	49.20284	15.01285	0.05449
32	24.404	BB	0.0624	50.03799	11.58793	0.05541
33	24.697	BB	0.0480	324.20154	111.21140	0.35901
34	25.184	BB	0.0488	454.88837	152.38835	0.50372
35	26.303	BB	0.0500	76.13000	24.67222	0.08430
36	28.429	BB	0.0513	110.02689	34.39141	0.12184
37	28.736	BB	0.0552	13.02314	3.68627	0.01442
38	29.112	BB	0.0504	503.09531	161.05461	0.55711

Totals : 9.03051e4 1.39185e4

=====
*** End of Report ***