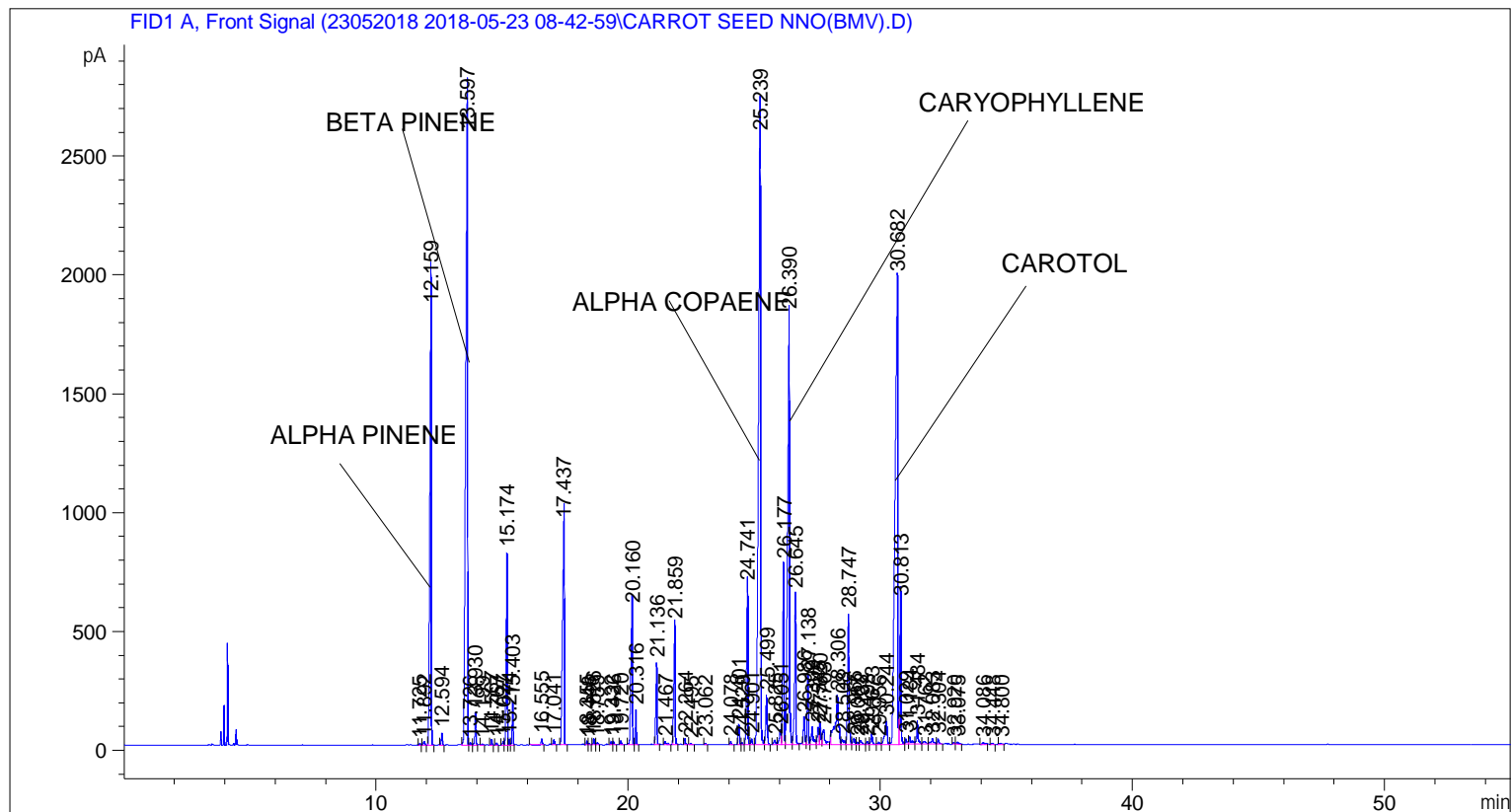


```

=====
Acq. Operator   : SYSTEM                               Seq. Line :    3
Acq. Instrument : BMV_NEW_GC_7820                     Location  : Vial 103
Injection Date  : 5/23/2018 11:57:21 AM                Inj       :    1
                                                    Inj Volume: 0.5 µl

Acq. Method     : C:\CHEM32\2\DATA\23052018 2018-05-23 08-42-59\UNIVERSAL F.M
Last changed    : 5/23/2018 8:43:06 AM by SYSTEM
Analysis Method : C:\CHEM32\2\DATA\23052018 2018-05-23 08-42-59\UNIVERSAL F.M (Sequence
Method)
Last changed    : 5/31/2018 2:41:32 PM by SYSTEM
                  (modified after loading)
Additional Info  : Peak(s) manually integrated
  
```



=====  
 Area Percent Report  
 =====

```

Sorted By      :      Signal
Multiplier     :      1.0000
Dilution      :      1.0000
Do not use Multiplier & Dilution Factor with ISTDs
  
```

Signal 1: FID1 A, Front Signal

Peak #	RetTime [min]	Type	Width [min]	Area [pA*s]	Height [pA]	Area %
1	11.725	BB	0.0464	21.89936	7.42962	0.02239
2	11.892	BB	0.0529	48.02495	15.18155	0.04910
3	12.159	BB	0.0666	7962.32275	1836.74683	8.13980
4	12.594	BB	0.0461	144.75269	49.52167	0.14798
5	13.597	BV	0.0889	1.42803e4	2566.35010	14.59862
6	13.726	VV	0.0510	26.48360	7.91855	0.02707

Sample Name: CARROT SEED NNO(BMV)

Peak #	RetTime [min]	Type	Width [min]	Area [pA*s]	Height [pA]	Area %
7	13.930	VB	0.0466	394.27902	133.08849	0.40307
8	14.199	BB	0.0571	16.84937	4.78345	0.01722
9	14.567	BB	0.0455	69.37851	24.14343	0.07092
10	14.767	BB	0.0449	25.77285	9.12608	0.02635
11	15.027	BV	0.0509	45.61983	15.22862	0.04664
12	15.174	VV	0.0529	2557.74121	809.56573	2.61475
13	15.274	VV	0.0442	66.16962	23.99623	0.06764
14	15.403	VB	0.0448	504.99796	179.62144	0.51625
15	16.555	BB	0.0489	79.45804	25.09073	0.08123
16	17.041	BB	0.0569	70.28546	20.05665	0.07185
17	17.437	BB	0.0814	4890.13916	929.76563	4.99914
18	18.355	BV	0.0469	46.44922	15.54063	0.04748
19	18.448	VB	0.0536	20.90641	5.87001	0.02137
20	18.626	BV	0.0525	85.90346	27.49446	0.08782
21	18.759	VB	0.0614	36.06624	8.51363	0.03687
22	19.332	BV	0.0506	37.42345	12.61244	0.03826
23	19.426	VB	0.0528	48.60863	15.39129	0.04969
24	19.720	BB	0.0530	52.77971	16.62908	0.05396
25	20.160	BV	0.0671	2514.96826	574.18475	2.57103
26	20.316	VB	0.0465	423.55627	143.16756	0.43300
27	21.136	BB	0.0549	1144.03149	343.34702	1.16953
28	21.467	BB	0.0717	72.25757	14.11820	0.07387
29	21.859	BB	0.0578	1989.85681	507.20261	2.03421
30	22.264	BB	0.0463	77.66949	26.41624	0.07940
31	22.495	BB	0.0604	25.04706	6.03947	0.02561
32	23.062	BB	0.0513	26.09259	7.75080	0.02667
33	24.078	BB	0.0562	48.85266	14.19043	0.04994
34	24.401	BV	0.0561	284.56537	82.75440	0.29091
35	24.529	VV	0.0596	27.74885	7.43365	0.02837
36	24.741	VV	0.0560	2520.74341	668.12421	2.57693
37	24.901	VV	0.0578	93.18777	23.73679	0.09526
38	25.239	VV	0.0851	1.51561e4	2560.49316	15.49392
39	25.499	VB	0.0642	858.37720	207.76863	0.87751
40	25.825	BV	0.0734	94.87541	19.29465	0.09699
41	26.051	VV	0.0643	281.12582	62.75766	0.28739
42	26.177	VV	0.0605	2901.38306	760.92682	2.96605
43	26.390	VV	0.0760	9297.59375	1809.19885	9.50483
44	26.645	VB	0.0552	2348.36401	634.69556	2.40071
45	26.986	BV	0.0597	417.85651	111.48620	0.42717
46	27.138	VV	0.0500	951.25531	292.01910	0.97246
47	27.309	VV	0.0747	391.36755	72.86519	0.40009
48	27.545	VV	0.0559	273.87582	72.70364	0.27998
49	27.620	VV	0.0532	344.24512	97.37827	0.35192
50	27.763	VB	0.1198	490.52206	62.35542	0.50146
51	28.306	BV	0.1294	1961.28271	201.76071	2.00500
52	28.508	VV	0.0968	136.90436	19.77233	0.13996
53	28.747	VV	0.0612	2135.05103	550.72473	2.18264
54	28.966	VV	0.0787	134.89438	26.78991	0.13790
55	29.087	VV	0.0787	45.43583	9.69196	0.04645
56	29.232	VV	0.0833	95.16286	16.49235	0.09728
57	29.493	VV	0.0617	47.89845	12.21533	0.04897
58	29.673	VB	0.0622	192.46257	44.74870	0.19675
59	29.956	BV	0.0875	51.79634	8.94618	0.05295
60	30.244	VV	0.0990	654.68793	96.65497	0.66928

Peak #	RetTime [min]	Type	Width [min]	Area [pA*s]	Height [pA]	Area %
61	30.682	VV	0.1048	1.42852e4	1964.90515	14.60362
62	30.813	VV	0.0585	2193.12378	602.11139	2.24201
63	31.029	VV	0.0688	97.97359	21.66629	0.10016
64	31.184	VV	0.0865	202.85881	31.76032	0.20738
65	31.484	VV	0.0669	423.72208	97.06893	0.43317
66	31.762	VV	0.0997	87.11208	12.14543	0.08905
67	32.083	VV	0.0980	164.66603	23.43739	0.16834
68	32.304	VB	0.0640	86.31533	20.97301	0.08824
69	32.920	BV	0.0644	28.68279	6.91335	0.02932
70	33.075	VB	0.0967	62.26427	9.46675	0.06365
71	34.086	BB	0.1161	62.60012	7.93370	0.06400
72	34.448	BB	0.0732	32.20683	6.56893	0.03292
73	34.800	BB	0.1039	49.20045	6.53107	0.05030

Totals : 9.78197e4 1.97414e4

=====  
\*\*\* End of Report \*\*\*