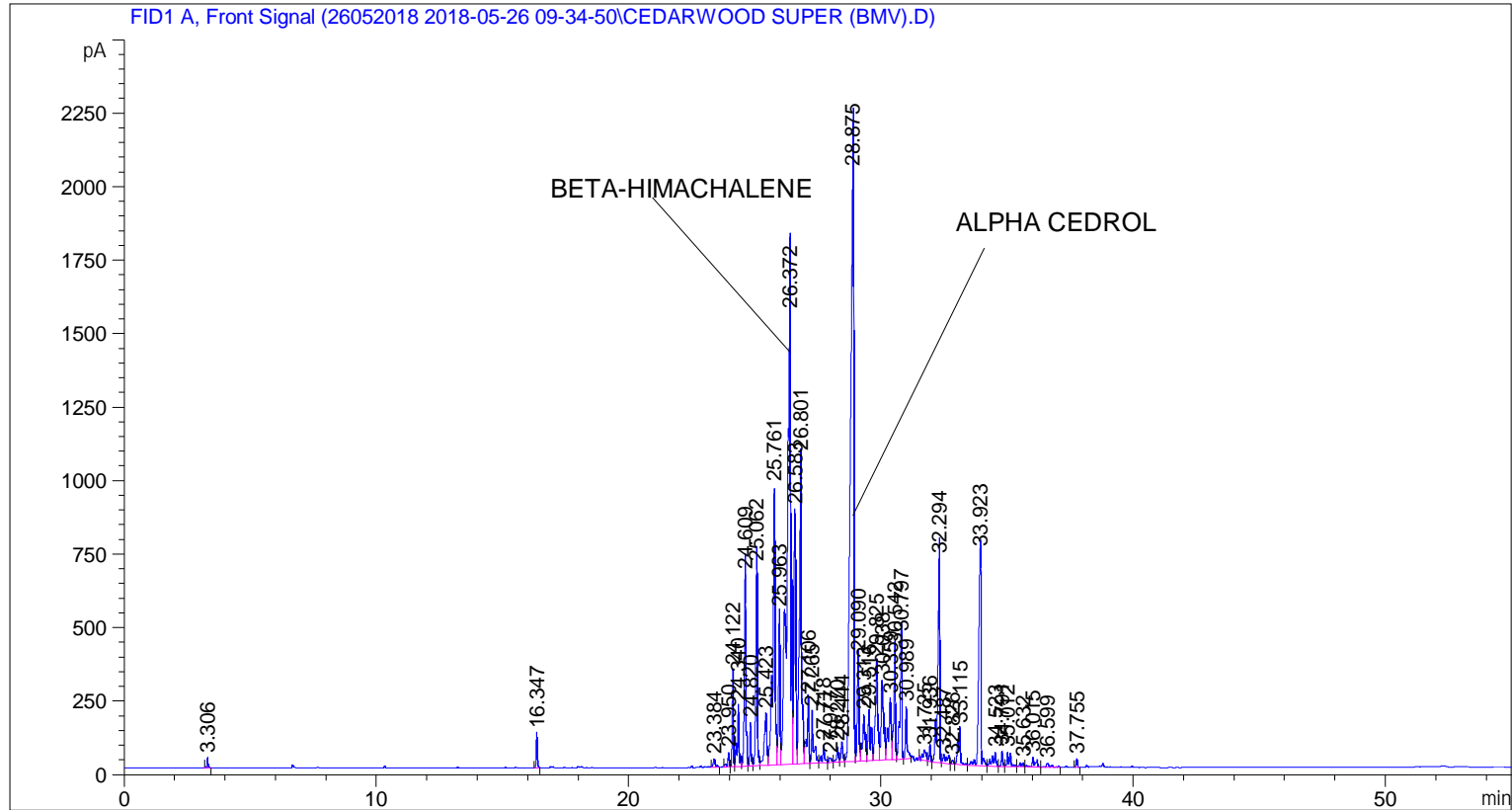


```

=====
Acq. Operator   : SYSTEM                               Seq. Line :    2
Acq. Instrument : BMV_NEW_GC_7820                     Location  : Vial 102
Injection Date  : 5/26/2018 10:54:39 AM              Inj       :    1
                                                    Inj Volume: 0.5 µl

Acq. Method     : C:\CHEM32\2\DATA\26052018 2018-05-26 09-34-50\UNIVERSAL F.M
Last changed    : 5/26/2018 9:34:58 AM by SYSTEM
Analysis Method : C:\CHEM32\2\DATA\26052018 2018-05-26 09-34-50\UNIVERSAL F.M (Sequence
Method)
Last changed    : 5/31/2018 3:04:41 PM by SYSTEM
                  (modified after loading)
  
```



=====
 Area Percent Report
 =====

```

Sorted By      :      Signal
Multiplier     :      1.0000
Dilution       :      1.0000
Do not use Multiplier & Dilution Factor with ISTDs
  
```

Signal 1: FID1 A, Front Signal

Peak #	RetTime [min]	Type	Width [min]	Area [pA*s]	Height [pA]	Area %
1	3.306	BB	0.0463	73.93777	32.82245	0.07672
2	16.347	BB	0.0531	366.89819	115.32340	0.38070
3	23.384	BB	0.0926	163.82784	27.88027	0.16999
4	23.950	BV	0.0726	214.22676	47.54289	0.22228
5	24.122	VV	0.0600	1121.98755	327.22195	1.16419
6	24.340	VV	0.0832	1120.79443	206.81467	1.16295
7	24.609	VV	0.0736	2998.25806	652.55786	3.11104

Peak #	RetTime [min]	Type	Width [min]	Area [pA*s]	Height [pA]	Area %
8	24.820	VV	0.0624	530.90045	146.20679	0.55087
9	25.062	VV	0.0731	3083.37329	677.46167	3.19935
10	25.423	VV	0.1120	1248.80396	173.51997	1.29578
11	25.761	VV	0.0944	6021.53027	944.35626	6.24803
12	25.963	VV	0.0697	2212.92334	519.27966	2.29616
13	26.372	VV	0.1540	1.76083e4	1533.05066	18.27059
14	26.583	VV	0.0807	4500.48975	864.55792	4.66977
15	26.801	VV	0.0879	6085.41797	1046.01074	6.31432
16	27.106	VV	0.0857	1256.32410	223.24034	1.30358
17	27.265	VV	0.0822	993.60846	175.03047	1.03098
18	27.718	VV	0.0895	370.97690	58.86492	0.38493
19	27.977	VV	0.1233	113.99415	13.95826	0.11828
20	28.270	VV	0.0769	248.20689	50.90085	0.25754
21	28.444	VV	0.0848	344.06854	65.99975	0.35701
22	28.875	VV	0.1372	1.87787e4	2006.87524	19.48501
23	29.090	VV	0.0759	1705.32312	355.99008	1.76947
24	29.313	VV	0.1087	1191.19824	156.62358	1.23600
25	29.516	VV	0.1086	1251.20154	164.83072	1.29826
26	29.825	VV	0.1008	2214.25342	336.31281	2.29754
27	30.038	VV	0.1064	1906.36462	269.77267	1.97807
28	30.359	VV	0.1129	1581.56921	207.60681	1.64106
29	30.542	VV	0.0752	1766.41455	373.57870	1.83286
30	30.797	VV	0.0795	2262.70288	415.45007	2.34781
31	30.989	VB	0.0672	774.68396	176.57076	0.80382
32	31.725	BV	0.1382	315.80396	33.43638	0.32768
33	31.936	VV	0.0624	215.57721	59.37516	0.22369
34	32.294	VV	0.0858	3901.47144	691.85516	4.04822
35	32.487	VV	0.1532	355.96371	31.17602	0.36935
36	32.826	VV	0.0782	69.87349	13.99683	0.07250
37	33.115	VV	0.0954	832.80383	122.40413	0.86413
38	33.923	VV	0.1110	4923.11963	726.90253	5.10830
39	34.523	VV	0.1257	420.90448	46.45463	0.43674
40	34.791	VV	0.0641	196.56383	52.05599	0.20396
41	35.012	VV	0.1177	385.53299	46.02201	0.40003
42	35.632	VV	0.1110	110.00245	14.10135	0.11414
43	36.015	VV	0.1213	284.56335	31.52315	0.29527
44	36.599	VB	0.1641	150.55365	12.90176	0.15622
45	37.755	BB	0.0606	100.98779	29.04177	0.10479

Totals : 9.63749e4 1.42775e4

=====
*** End of Report ***