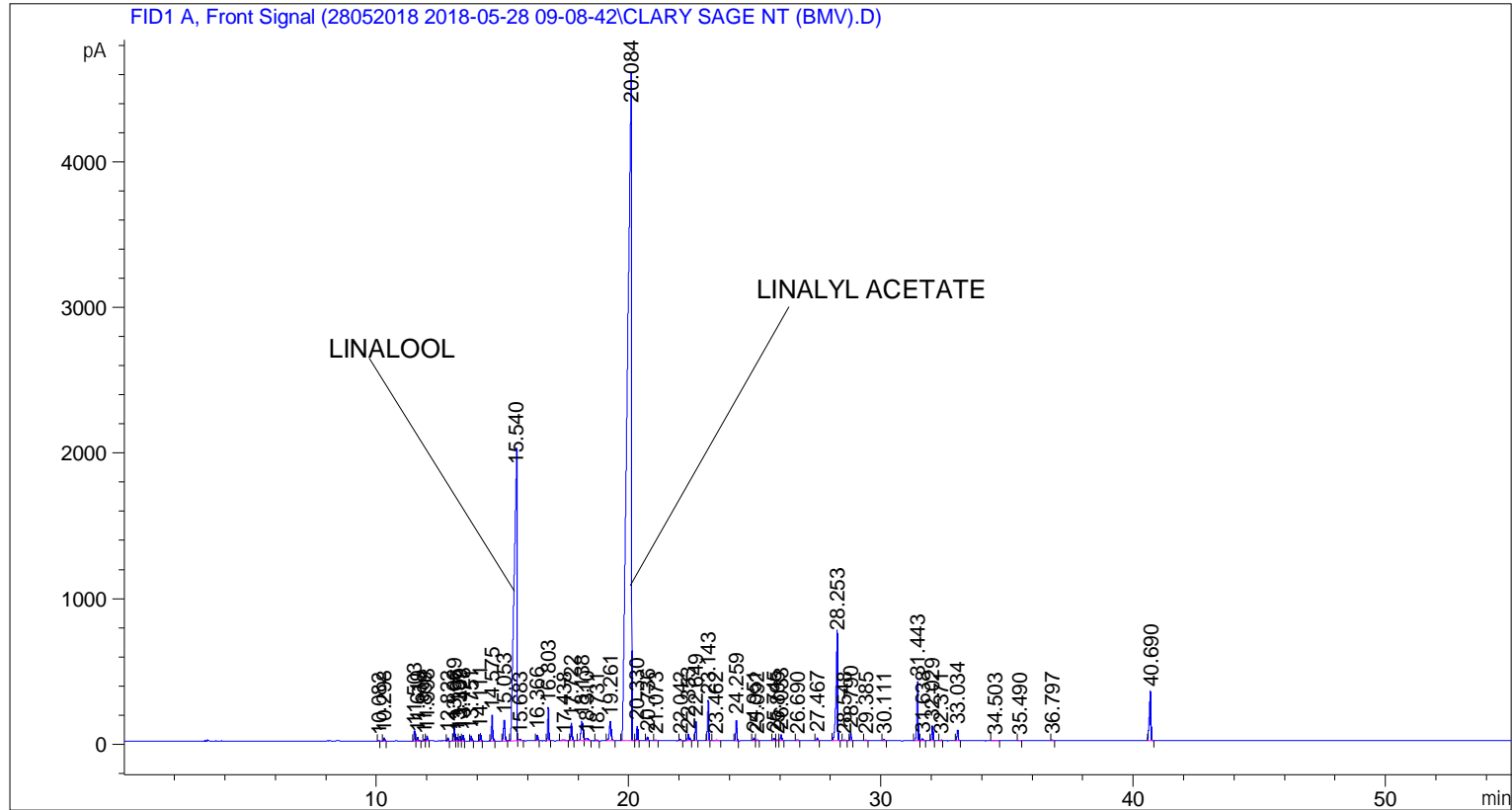


```

=====
Acq. Operator   : SYSTEM                               Seq. Line :    6
Acq. Instrument : BMV_NEW_GC_7820                     Location  : Vial 106
Injection Date  : 5/28/2018 2:56:57 PM                 Inj       :    1
                                                    Inj Volume: 0.5 µl

Acq. Method     : C:\CHEM32\2\DATA\28052018 2018-05-28 09-08-42\UNIVERSAL F.M
Last changed    : 5/28/2018 9:08:51 AM by SYSTEM
Analysis Method : C:\CHEM32\2\DATA\28052018 2018-05-28 09-08-42\UNIVERSAL F.M (Sequence
Method)
Last changed    : 5/31/2018 3:07:23 PM by SYSTEM
                  (modified after loading)
Additional Info  : Peak(s) manually integrated
  
```



=====
 Area Percent Report
 =====

```

Sorted By       :      Signal
Multiplier      :      1.0000
Dilution       :      1.0000
Do not use Multiplier & Dilution Factor with ISTDs
  
```

Signal 1: FID1 A, Front Signal

Peak #	RetTime [min]	Type	Width [min]	Area [pA*s]	Height [pA]	Area %
1	10.082	BB	0.0408	10.89747	4.12344	0.01311
2	10.298	BB	0.0452	59.40361	22.18605	0.07147
3	11.503	BV	0.0455	195.26900	72.20772	0.23492
4	11.619	VB	0.0521	72.55893	22.19833	0.08729
5	11.899	BV	0.0428	27.30914	10.33205	0.03285
6	11.998	VB	0.0483	95.90522	32.64158	0.11538

Sample Name: CLARY SAGE NT (BMV)

Peak #	RetTime [min]	Type	Width [min]	Area [pA*s]	Height [pA]	Area %
7	12.822	BB	0.0436	55.43041	20.43409	0.06669
8	13.069	BV	0.0463	285.46536	103.01704	0.34343
9	13.197	VV	0.0501	78.53007	25.40432	0.09448
10	13.309	VV	0.0482	98.17677	33.49543	0.11811
11	13.428	VB	0.0445	106.49876	38.17410	0.12813
12	13.751	BB	0.0480	91.86984	31.55074	0.11053
13	14.111	BB	0.0464	140.67311	50.60456	0.16924
14	14.575	BB	0.0537	567.85596	175.50652	0.68317
15	15.053	BB	0.0621	560.17017	141.72858	0.67392
16	15.540	BV	0.1157	1.52547e4	1859.98950	18.35238
17	15.683	VB	0.0711	56.23680	11.09453	0.06766
18	16.366	BB	0.0483	116.57492	39.60665	0.14025
19	16.803	BB	0.0481	670.84991	229.76192	0.80708
20	17.438	BB	0.0984	56.89906	7.86342	0.06845
21	17.722	BB	0.0530	411.55179	123.09775	0.49512
22	18.138	BV	0.1029	810.30786	129.69673	0.97485
23	18.310	VB	0.1163	129.44682	15.35605	0.15573
24	18.731	BB	0.0609	31.56238	8.20331	0.03797
25	19.261	BB	0.0788	656.18317	130.13646	0.78943
26	20.084	BV	0.1586	5.25986e4	4491.93604	63.27964
27	20.330	VB	0.0450	271.35022	102.07331	0.32645
28	20.736	BB	0.0493	78.69802	25.97976	0.09468
29	21.073	BB	0.0527	14.02135	4.23073	0.01687
30	22.042	BB	0.0497	34.85407	11.40213	0.04193
31	22.353	BB	0.0601	178.78435	45.20732	0.21509
32	22.649	BB	0.0484	386.35703	130.97972	0.46481
33	23.143	BB	0.0508	881.80963	279.23218	1.06088
34	23.462	BB	0.1182	36.53774	4.25617	0.04396
35	24.259	BB	0.0513	450.21130	140.65109	0.54163
36	24.951	BV	0.0498	59.67058	19.42762	0.07179
37	25.092	VB	0.0511	16.89526	5.30866	0.02033
38	25.745	BV	0.0515	53.90193	16.78223	0.06485
39	25.895	VV	0.0534	24.76806	7.71879	0.02980
40	26.033	VB	0.0554	134.09517	37.80613	0.16133
41	26.690	BB	0.0671	35.31022	7.76398	0.04248
42	27.467	BB	0.0507	60.11776	19.12267	0.07233
43	28.253	BB	0.0659	3310.80811	716.80432	3.98312
44	28.548	BB	0.0639	22.50386	5.48259	0.02707
45	28.790	BB	0.0521	164.16998	50.25861	0.19751
46	29.385	BB	0.0565	16.10310	4.42304	0.01937
47	30.111	BB	0.0543	36.24114	10.47989	0.04360
48	31.443	BB	0.0578	1442.55920	402.37097	1.73550
49	31.638	BB	0.0631	50.12666	12.41194	0.06031
50	32.029	BB	0.0521	335.73337	102.69513	0.40391
51	32.371	BB	0.0492	15.77451	4.94264	0.01898
52	33.034	BB	0.0542	249.36000	76.20073	0.30000
53	34.503	BB	0.0972	22.45746	3.89606	0.02702
54	35.490	BB	0.0525	12.68489	3.84443	0.01526
55	36.797	BB	0.0545	22.83068	6.58179	0.02747
56	40.690	BB	0.0673	1463.25781	332.57669	1.76040

Totals : 8.31209e4 1.04213e4

Sample Name: CLARY SAGE NT (BMV)

=====

*** End of Report ***