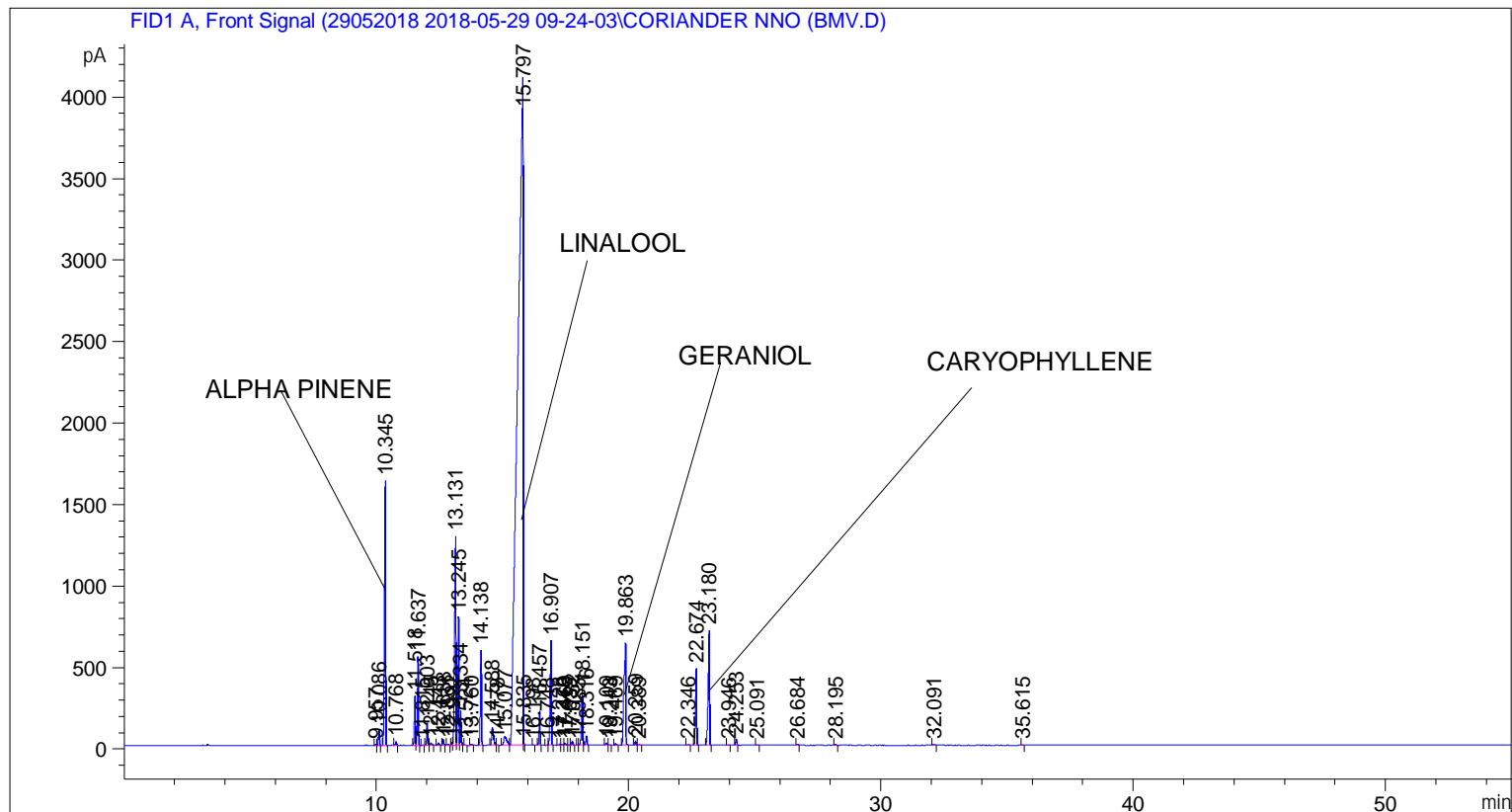


```
=====
Acq. Operator   : SYSTEM                               Seq. Line :    1
Acq. Instrument : BMV_NEW_GC_7820                     Location  : Vial 101
Injection Date  : 5/29/2018 9:38:46 AM                Inj       :    1
                                                    Inj Volume: 0.5 µl

Method          : C:\CHEM32\2\DATA\29052018 2018-05-29 09-24-03\UNIVERSAL F.M (Sequence
                  Method)
Last changed    : 5/29/2018 9:24:08 AM by SYSTEM
Additional Info  : Peak(s) manually integrated
=====
```



=====
 Area Percent Report
 =====

```
Sorted By      : Signal
Multiplier     : 1.0000
Dilution       : 1.0000
Do not use Multiplier & Dilution Factor with ISTDs
```

Signal 1: FID1 A, Front Signal

Peak #	RetTime [min]	Type	Width [min]	Area [pA*s]	Height [pA]	Area %
1	9.957	BV	0.0410	17.61517	6.62292	0.01934
2	10.086	VB	0.0439	272.70526	96.69482	0.29941
3	10.345	BB	0.0508	5383.19531	1620.06409	5.91041
4	10.768	BB	0.0435	66.77709	23.29008	0.07332
5	11.518	BV	0.0479	895.45135	299.10718	0.98315
6	11.637	VB	0.0418	1484.25378	543.88391	1.62962
7	11.815	BB	0.0429	10.42581	3.81685	0.01145
8	12.003	BB	0.0431	390.59402	137.59113	0.42885
9	12.145	BB	0.0585	56.77964	13.94922	0.06234

Peak #	RetTime [min]	Type	Width [min]	Area [pA*s]	Height [pA]	Area %
10	12.443	BB	0.0505	38.67384	12.37557	0.04246
11	12.638	BB	0.0431	102.42161	37.22898	0.11245
12	12.831	BB	0.0453	24.74109	8.67093	0.02716
13	12.992	BV	0.0427	46.14425	16.45597	0.05066
14	13.131	VV	0.0535	4891.47461	1281.06555	5.37053
15	13.245	VV	0.0466	2263.25391	785.64740	2.48491
16	13.334	VB	0.0392	524.17688	209.43770	0.57551
17	13.524	BB	0.0408	8.07640	3.16558	0.00887
18	13.760	BB	0.0492	24.78495	7.77204	0.02721
19	14.138	BB	0.0461	1706.61511	584.39392	1.87375
20	14.588	BV	0.0709	536.33557	111.94746	0.58886
21	14.778	VB	0.0525	12.40815	3.57705	0.01362
22	15.077	BV	0.1144	454.07007	53.29226	0.49854
23	15.797	VV	0.1762	5.98490e4	4102.86719	65.71038
24	15.835	VB	0.0257	24.38040	14.46644	0.02677
25	16.198	BB	0.0421	6.00055	2.25029	0.00659
26	16.457	BV	0.0439	579.47217	205.44058	0.63622
27	16.748	BV	0.0491	8.33208	2.69610	0.00915
28	16.907	VB	0.0523	2164.24634	642.16290	2.37620
29	17.228	BB	0.0518	16.00453	4.57997	0.01757
30	17.373	BV	0.0464	20.39105	6.91845	0.02239
31	17.469	VB	0.0484	47.65812	14.87013	0.05233
32	17.635	BV	0.0459	8.49003	2.75959	0.00932
33	17.752	VB	0.0437	74.76733	25.85935	0.08209
34	17.985	BV	0.0464	6.76527	2.23078	0.00743
35	18.151	VV	0.0517	1165.59204	351.19379	1.27975
36	18.316	VB	0.0489	186.15735	57.37041	0.20439
37	19.109	BB	0.0508	48.52722	14.21809	0.05328
38	19.243	BB	0.0281	2.39629	1.74027	0.00263
39	19.469	BB	0.0481	25.69479	8.31121	0.02821
40	19.863	BB	0.0667	3151.37158	626.49493	3.46001
41	20.259	BB	0.0465	67.80022	22.92563	0.07444
42	20.389	BB	0.0626	13.66742	3.27985	0.01501
43	22.346	BB	0.0615	18.66021	4.58312	0.02049
44	22.674	BB	0.0496	1518.11719	470.85599	1.66680
45	23.180	BB	0.0559	2648.88501	704.52460	2.90831
46	23.946	BB	0.0565	12.53507	3.36163	0.01376
47	24.253	BB	0.0488	120.93690	38.38243	0.13278
48	25.091	BB	0.0462	8.49704	2.98648	0.00933
49	26.684	BB	0.0510	25.23481	7.55288	0.02771
50	28.195	BB	0.0551	15.50068	4.19552	0.01702
51	32.091	BB	0.0720	22.21695	4.63251	0.02439
52	35.615	BV	0.0492	11.69840	3.66642	0.01284

Totals : 9.10800e4 1.32174e4

=====
*** End of Report ***