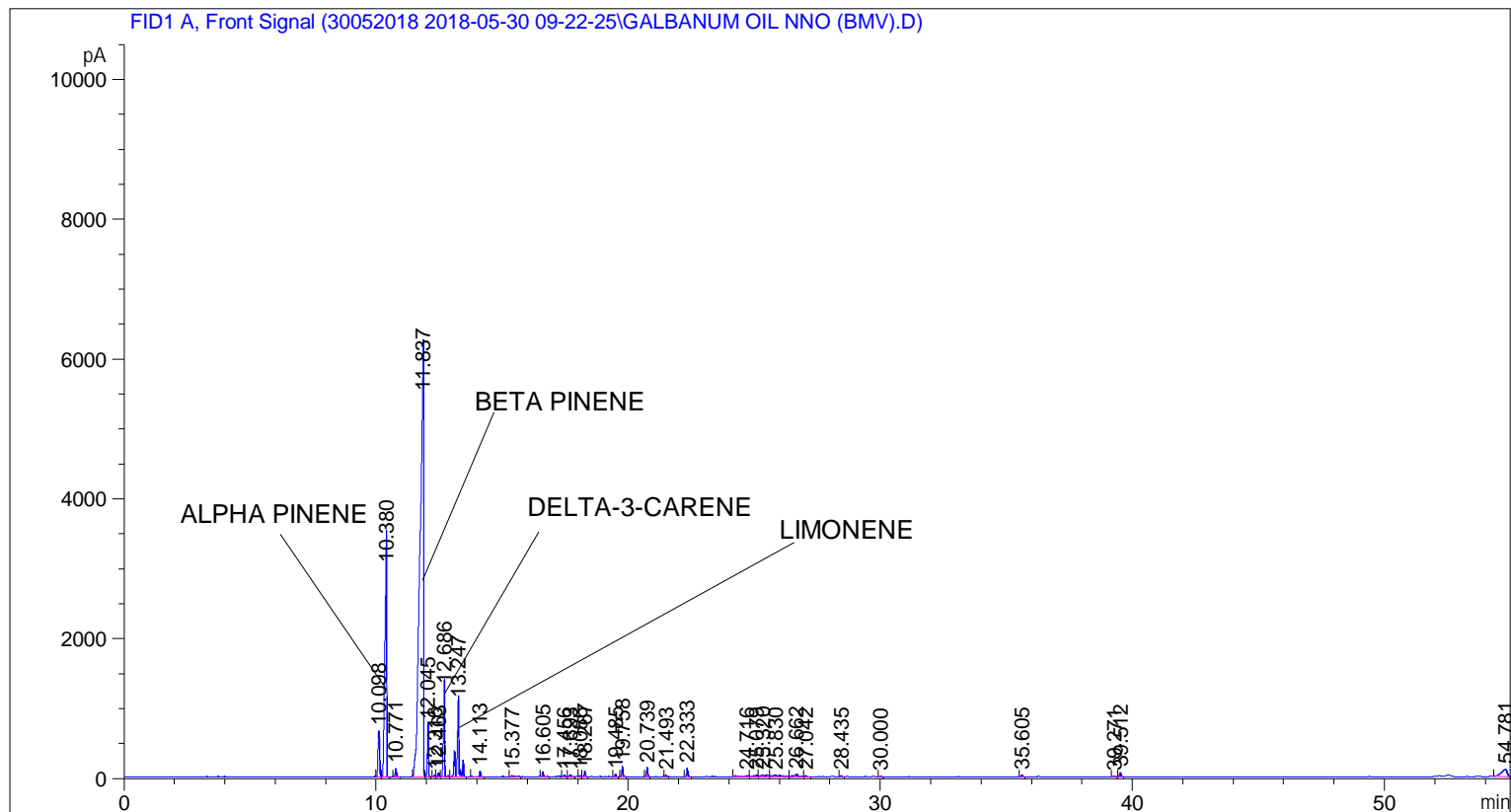


```

=====
Acq. Operator   : SYSTEM                               Seq. Line :    2
Acq. Instrument : BMV_NEW_GC_7820                     Location  : Vial 102
Injection Date  : 5/30/2018 10:44:35 AM                Inj       :    1
                                                    Inj Volume: 0.5 µl

Acq. Method     : C:\CHEM32\2\DATA\30052018 2018-05-30 09-22-25\UNIVERSAL F.M
Last changed    : 5/30/2018 9:22:31 AM by SYSTEM
Analysis Method : C:\CHEM32\2\DATA\30052018 2018-05-30 09-22-25\UNIVERSAL F.M (Sequence
Method)
Last changed    : 6/5/2018 4:30:31 PM by SYSTEM
                  (modified after loading)
Additional Info  : Peak(s) manually integrated
  
```



=====
 Area Percent Report
 =====

```

Sorted By      :      Signal
Multiplier     :      1.0000
Dilution      :      1.0000
Do not use Multiplier & Dilution Factor with ISTDs
  
```

Signal 1: FID1 A, Front Signal

Peak #	RetTime [min]	Type	Width [min]	Area [pA*s]	Height [pA]	Area %
1	10.098	BV	0.0770	2979.11670	655.92676	2.92800
2	10.380	VB	0.0883	1.75045e4	2988.00684	17.20414
3	10.771	BB	0.0576	373.22919	115.80258	0.36683
4	11.837	BV	0.1511	6.10907e4	5434.43408	60.04250
5	12.045	VB	0.0536	2118.89087	736.26819	2.08253
6	12.316	BV	0.0578	86.23020	26.61142	0.08475

Peak #	RetTime [min]	Type	Width [min]	Area [pA*s]	Height [pA]	Area %
7	12.463	VV	0.0567	190.50871	54.66283	0.18724
8	12.686	VV	0.0644	4765.20410	1252.78064	4.68344
9	13.247	VB	0.0882	6150.75781	1052.71436	6.04522
10	14.113	BB	0.0575	268.12729	83.46487	0.26353
11	15.377	BB	0.1000	125.47339	17.43171	0.12332
12	16.605	BB	0.0607	241.48949	69.22114	0.23735
13	17.456	BV	0.0597	74.79573	22.00223	0.07351
14	17.693	VB	0.0859	158.49519	29.86718	0.15578
15	18.086	BV	0.0596	65.28941	17.46892	0.06417
16	18.267	VB	0.0535	242.15344	75.28970	0.23800
17	19.485	BB	0.0582	109.71851	33.53695	0.10784
18	19.758	BB	0.0581	465.85397	142.83304	0.45786
19	20.739	BB	0.0562	400.71399	129.07521	0.39384
20	21.493	BB	0.0534	67.91522	21.20257	0.06675
21	22.333	BB	0.0605	422.84091	121.67374	0.41559
22	24.716	BV	0.1642	207.90927	17.30619	0.20434
23	25.079	VV	0.1155	197.38895	23.14072	0.19400
24	25.320	VV	0.1698	387.60309	29.40469	0.38095
25	25.830	VB	0.2923	546.48395	25.27096	0.53711
26	26.662	BV	0.1504	345.05334	31.85789	0.33913
27	27.042	VB	0.0591	50.83364	13.77444	0.04996
28	28.435	BB	0.0517	43.60437	14.23956	0.04286
29	30.000	BB	0.0557	39.35851	11.57195	0.03868
30	35.605	BB	0.0587	87.95938	26.50714	0.08645
31	39.271	BB	0.0614	40.93030	11.52407	0.04023
32	39.512	BB	0.0623	211.97414	58.49723	0.20834
33	54.781	BBA	0.2440	1684.68567	100.29755	1.65578

Totals : 1.01746e5 1.34437e4

=====
*** End of Report ***