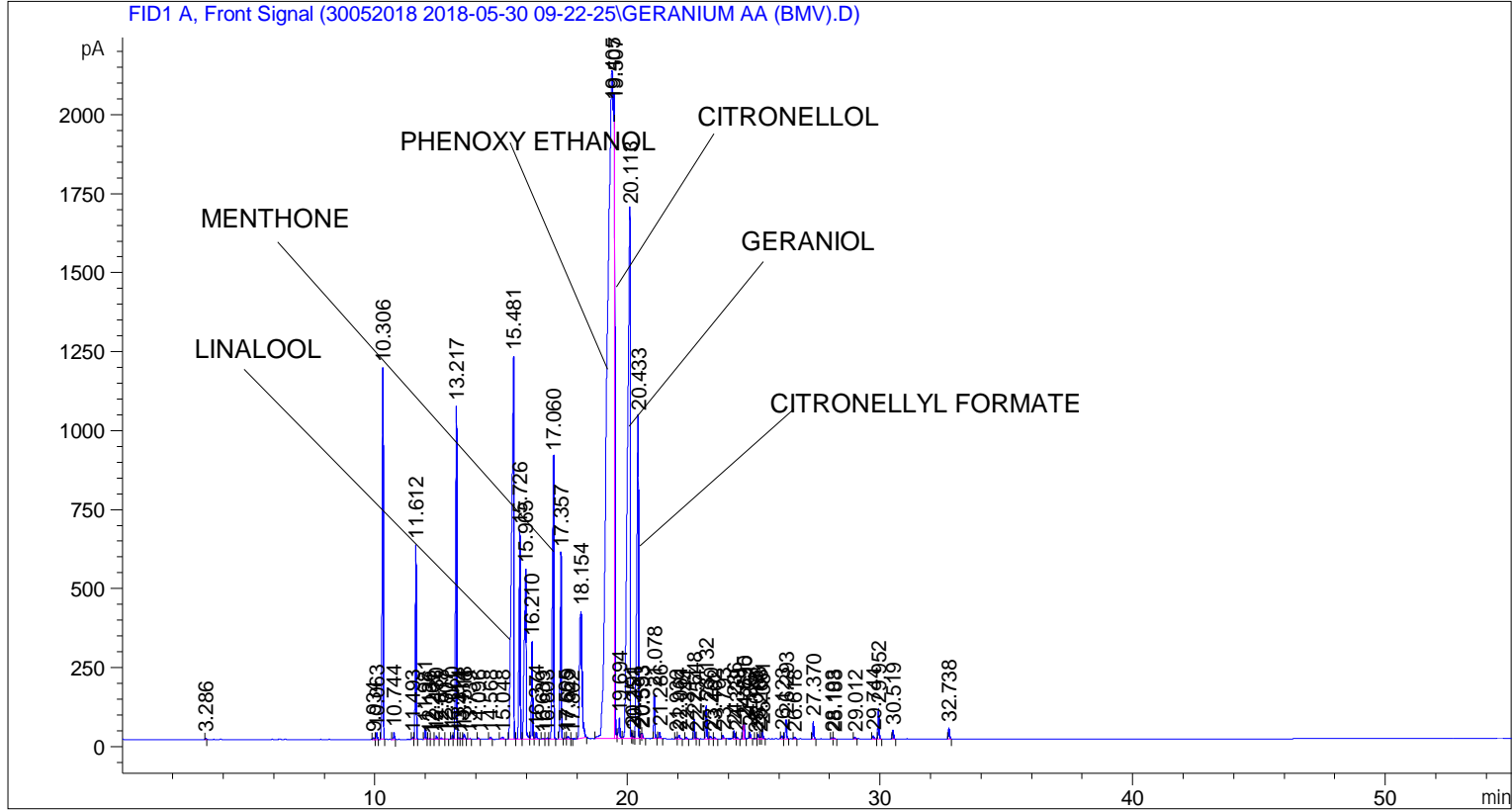


Sample Name: GERANIUM AA (BMV)

```

=====
Acq. Operator   : SYSTEM                               Seq. Line :    4
Acq. Instrument : BMV_NEW_GC_7820                     Location  : Vial 104
Injection Date  : 5/30/2018 12:59:36 PM                Inj       :    1
                                                    Inj Volume: 0.5 µl

Method          : C:\CHEM32\2\DATA\30052018 2018-05-30 09-22-25\UNIVERSAL F.M (Sequence
                  Method)
Last changed    : 5/30/2018 9:22:31 AM by SYSTEM
    
```



Area Percent Report

```

Sorted By       : Signal
Multiplier      : 1.0000
Dilution        : 1.0000
Do not use Multiplier & Dilution Factor with ISTDs
    
```

Signal 1: FID1 A, Front Signal

Peak #	RetTime [min]	Type	Width [min]	Area [pA*s]	Height [pA]	Area %
1	3.286	BB	0.0282	11.14496	5.61047	0.01201
2	9.934	BB	0.0420	12.00705	4.51273	0.01293
3	10.063	BB	0.0429	59.80322	21.83865	0.06442
4	10.306	BB	0.0451	3531.99805	1175.15015	3.80469
5	10.744	BB	0.0448	59.82810	20.65656	0.06445
6	11.493	BV	0.0439	19.56314	7.14905	0.02107
7	11.612	VB	0.0438	1730.01685	616.10199	1.86358
8	11.981	BB	0.0418	100.07661	36.74011	0.10780
9	12.136	BB	0.0420	5.41182	1.97485	0.00583
10	12.261	BB	0.0411	4.08751	1.58216	0.00440

Sample Name: GERANIUM AA (BMV)

Peak #	RetTime [min]	Type	Width [min]	Area [pA*s]	Height [pA]	Area %
11	12.430	BB	0.0461	35.46218	11.46035	0.03820
12	12.618	BB	0.0452	13.30700	4.67338	0.01433
13	12.807	BB	0.0483	6.58902	2.11674	0.00710
14	13.060	BV	0.0466	41.98820	14.17636	0.04523
15	13.217	VV	0.0497	3503.05713	1055.28711	3.77351
16	13.314	VV	0.0451	14.67288	5.02231	0.01581
17	13.414	VV	0.0414	7.56810	2.90724	0.00815
18	13.518	VB	0.0557	62.39135	16.26668	0.06721
19	13.739	BB	0.0431	4.92980	1.78894	0.00531
20	14.096	BB	0.0437	11.09273	4.07669	0.01195
21	14.568	BB	0.0540	24.74555	7.04208	0.02666
22	15.048	BB	0.0703	31.54706	6.10375	0.03398
23	15.481	BV	0.0789	7371.35449	1212.58228	7.94046
24	15.726	VB	0.0512	2224.82031	662.47168	2.39659
25	15.965	BV	0.0697	2754.20361	538.51434	2.96684
26	16.210	VB	0.0439	869.98480	308.31586	0.93715
27	16.374	BB	0.0511	73.42755	21.93244	0.07910
28	16.639	BB	0.0556	7.29676	2.04767	0.00786
29	16.803	BV	0.0613	14.11304	3.63444	0.01520
30	17.060	VB	0.0575	3480.20483	892.71552	3.74890
31	17.357	BB	0.0497	1904.08374	589.25293	2.05109
32	17.565	BV	0.0413	10.13454	3.90084	0.01092
33	17.629	VV	0.0600	34.74866	8.28084	0.03743
34	17.802	VV	0.0431	6.87097	2.49358	0.00740
35	18.154	BB	0.0946	2852.83032	402.77328	3.07308
36	19.405	BV	0.2132	3.82566e4	2113.69263	41.21021
37	19.507	VV	0.0314	4098.40430	2039.42810	4.41482
38	19.694	VV	0.0597	262.60938	64.21615	0.28288
39	20.113	VV	0.0880	1.19128e4	1674.83264	12.83249
40	20.191	VV	0.0359	41.69978	17.43169	0.04492
41	20.251	VV	0.0390	19.21383	7.48180	0.02070
42	20.433	VV	0.0581	4383.68311	1021.08527	4.72213
43	20.553	VV	0.0367	38.40033	15.63441	0.04137
44	20.593	VB	0.0436	50.33238	16.95351	0.05422
45	21.078	BB	0.0448	429.26199	143.90218	0.46240
46	21.286	BB	0.0557	80.32922	21.46911	0.08653
47	21.936	BV	0.0446	15.09045	5.23543	0.01626
48	22.064	VB	0.0659	51.50249	11.58146	0.05548
49	22.344	BB	0.0521	22.57816	6.56127	0.02432
50	22.648	BV	0.0465	183.32674	61.95856	0.19748
51	22.754	VB	0.0582	12.30051	3.17784	0.01325
52	23.132	BB	0.0473	318.68375	105.32741	0.34329
53	23.290	BV	0.0617	37.04241	8.69403	0.03990
54	23.462	VB	0.0671	22.87552	5.32344	0.02464
55	23.793	BB	0.0518	38.63151	11.04080	0.04161
56	24.236	BV	0.0482	81.53867	26.28803	0.08783
57	24.339	VB	0.0445	19.27285	6.71628	0.02076
58	24.595	BV	0.0419	130.61894	47.82632	0.14070
59	24.630	VB	0.0418	133.86578	47.56445	0.14420
60	24.861	BB	0.0483	60.60826	20.04230	0.06529
61	25.078	BV	0.0430	5.98485	2.18149	0.00645
62	25.186	VV	0.0520	48.81066	14.58673	0.05258
63	25.268	VV	0.0443	17.34106	5.90018	0.01868
64	25.351	VB	0.0514	101.12866	30.70299	0.10894

Sample Name: GERANIUM AA (BMV)

Peak #	RetTime [min]	Type	Width [min]	Area [pA*s]	Height [pA]	Area %
65	26.123	BV	0.0553	34.32921	9.47865	0.03698
66	26.293	VB	0.0516	204.62675	61.87096	0.22043
67	26.618	BB	0.0588	26.53768	6.61737	0.02859
68	27.370	BB	0.0488	176.19650	55.87174	0.18980
69	28.103	BV	0.0554	16.73683	4.60783	0.01803
70	28.188	VB	0.0556	14.07119	3.94459	0.01516
71	29.012	BB	0.0503	16.66203	5.20564	0.01795
72	29.744	BB	0.0596	40.87030	10.69418	0.04403
73	29.952	BB	0.0502	317.17456	96.83819	0.34166
74	30.519	BB	0.0487	91.96769	28.44008	0.09907
75	32.738	BB	0.0533	123.78091	35.80081	0.13334

Totals : 9.28328e4 1.55474e4

=====
*** End of Report ***