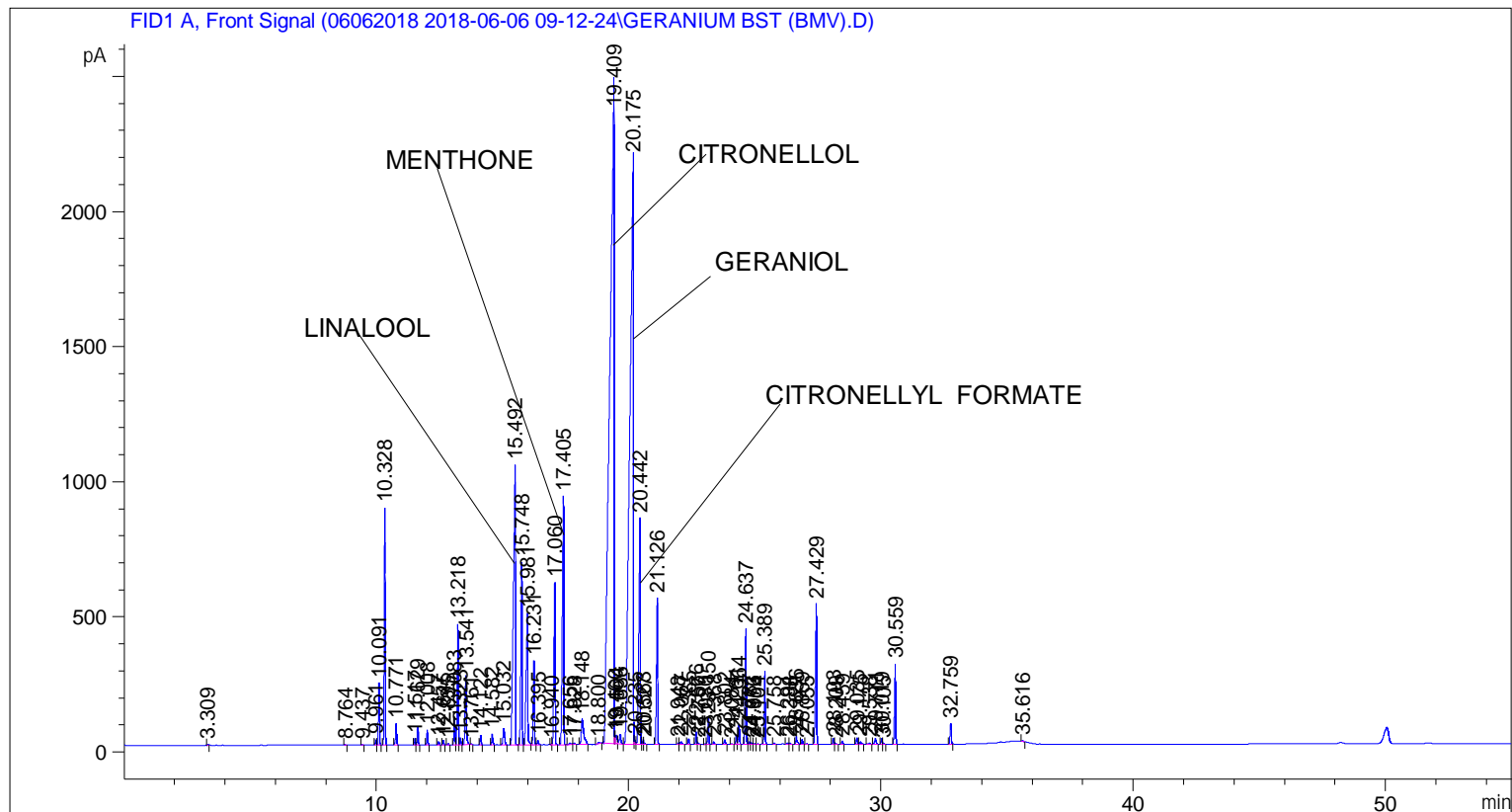


```

=====
Acq. Operator   : SYSTEM                               Seq. Line :    2
Acq. Instrument : BMV_NEW_GC_7820                     Location  : Vial 102
Injection Date  : 6/6/2018 10:30:57 AM                Inj       :    1
                                                    Inj Volume: 0.5 µl
Method         : C:\CHEM32\2\DATA\06062018 2018-06-06 09-12-24\UNIVERSAL F.M (Sequence
                Method)
Last changed   : 6/6/2018 9:12:31 AM by SYSTEM
Additional Info : Peak(s) manually integrated
  
```



=====
 Area Percent Report
 =====

```

Sorted By      : Signal
Multiplier     : 1.0000
Dilution      : 1.0000
Do not use Multiplier & Dilution Factor with ISTDs
  
```

Signal 1: FID1 A, Front Signal

Peak #	RetTime [min]	Type	Width [min]	Area [pA*s]	Height [pA]	Area %
1	3.309	BB	0.0305	8.83158	4.21368	0.01003
2	8.764	BB	0.0413	6.65642	2.48086	0.00756
3	9.437	BB	0.0437	6.24374	2.22806	0.00709
4	9.961	BV	0.0422	48.72707	18.19321	0.05534
5	10.091	VB	0.0427	624.00830	229.99471	0.70868
6	10.328	BB	0.0440	2484.75122	878.64728	2.82189
7	10.771	BB	0.0450	230.45822	79.06819	0.26173
8	11.517	BV	0.0411	65.94318	24.71423	0.07489
9	11.629	VB	0.0434	191.12238	68.83054	0.21705

Sample Name: GERANIUM BST (BMV)

Peak #	RetTime [min]	Type	Width [min]	Area [pA*s]	Height [pA]	Area %
10	12.008	BB	0.0428	154.15192	56.49203	0.17507
11	12.457	BB	0.0474	39.83155	13.10972	0.04524
12	12.645	BB	0.0421	46.24554	16.79284	0.05252
13	12.835	BB	0.0482	19.02124	6.13495	0.02160
14	13.083	BV	0.0446	284.67703	101.76087	0.32330
15	13.218	VV	0.0428	1254.22083	446.23355	1.42440
16	13.323	VB	0.0437	71.98075	25.65354	0.08175
17	13.541	BB	0.0566	1004.71533	256.95444	1.14104
18	13.761	BB	0.0403	5.95887	2.37306	0.00677
19	14.122	BB	0.0430	98.44102	35.88655	0.11180
20	14.582	BB	0.0498	128.16969	40.60650	0.14556
21	15.032	BB	0.0671	268.98026	60.28073	0.30548
22	15.492	BB	0.0730	5755.74658	1033.59619	6.53671
23	15.748	BB	0.0497	2236.94873	674.90070	2.54047
24	15.981	BB	0.0617	2241.89819	487.23431	2.54609
25	16.231	BB	0.0453	887.29626	310.74185	1.00769
26	16.395	BB	0.0521	57.83050	17.24137	0.06568
27	16.940	BV	0.0388	12.06671	4.88723	0.01370
28	17.060	VB	0.0510	2053.73828	598.49951	2.33240
29	17.405	BB	0.0566	3598.31055	919.92767	4.08655
30	17.656	BV	0.0667	31.23771	6.42417	0.03548
31	17.828	VB	0.0454	17.20682	6.01246	0.01954
32	18.148	BB	0.0915	620.53442	95.94903	0.70473
33	18.800	BB	0.0795	36.94159	6.48585	0.04195
34	19.409	BV	0.1451	2.94435e4	2452.68872	33.43855
35	19.460	VV	0.0228	41.58027	25.83294	0.04722
36	19.504	VV	0.0528	124.15960	33.05793	0.14101
37	19.656	VV	0.0663	162.76727	37.03621	0.18485
38	20.175	VV	0.1219	2.13922e4	2172.02686	24.29484
39	20.235	VV	0.0420	51.80811	17.26145	0.05884
40	20.442	VV	0.0556	3420.45020	837.75549	3.88455
41	20.563	VV	0.0417	46.59313	17.15517	0.05292
42	20.627	VB	0.0445	13.76125	4.65753	0.01563
43	21.126	BB	0.0496	1793.02844	541.43420	2.03632
44	21.948	BV	0.0436	13.74934	4.77266	0.01561
45	22.067	VB	0.0820	57.29004	9.82757	0.06506
46	22.365	BB	0.0496	69.94125	21.15613	0.07943
47	22.666	BV	0.0473	146.91988	48.55352	0.16685
48	22.757	VB	0.0500	18.83110	5.48986	0.02139
49	23.030	BV	0.0506	9.05350	2.81230	0.01028
50	23.150	VB	0.0471	295.83994	95.56725	0.33598
51	23.368	BB	0.0517	29.64827	8.93143	0.03367
52	23.802	BB	0.0519	55.26181	16.17671	0.06276
53	24.084	BB	0.0488	7.80280	2.40586	0.00886
54	24.261	BV	0.0485	112.80218	36.06685	0.12811
55	24.364	VB	0.0463	231.25015	76.38313	0.26263
56	24.637	BB	0.0494	1368.94641	427.47260	1.55469
57	24.787	BV	0.0481	33.95806	10.66931	0.03857
58	24.873	VV	0.0478	18.94355	6.00626	0.02151
59	24.956	VB	0.0491	10.87270	3.32585	0.01235
60	25.104	BB	0.0287	2.41192	1.68570	0.00274
61	25.389	BB	0.0476	825.75745	270.33859	0.93780
62	25.758	BB	0.0488	12.34117	3.80875	0.01402
63	26.294	BV	0.0558	19.26131	5.12667	0.02187

Peak #	RetTime [min]	Type	Width [min]	Area [pA*s]	Height [pA]	Area %
64	26.388	VB	0.0351	9.09171	4.40757	0.01033
65	26.636	BB	0.0551	105.45631	27.92098	0.11977
66	26.869	BB	0.0474	53.85110	18.25246	0.06116
67	27.055	BB	0.0494	10.20420	3.27307	0.01159
68	27.429	BB	0.0524	1804.11084	520.46747	2.04890
69	28.103	BV	0.0507	77.66789	23.42480	0.08821
70	28.209	VB	0.0513	13.22552	3.92552	0.01502
71	28.459	BB	0.0491	38.04850	11.96703	0.04321
72	29.035	BV	0.0505	80.58040	25.09306	0.09151
73	29.175	VB	0.0614	38.95584	9.39984	0.04424
74	29.538	BB	0.0679	20.32002	4.39929	0.02308
75	29.771	BB	0.0669	104.23276	22.15993	0.11838
76	30.019	BV	0.0479	61.50036	19.96099	0.06985
77	30.105	VB	0.0493	7.69629	2.34737	0.00874
78	30.559	BB	0.0489	938.10803	296.63116	1.06539
79	32.759	BB	0.0514	252.45161	76.67366	0.28671
80	35.616	BB	0.0528	13.42599	3.84179	0.01525

Totals : 8.80526e4 1.48022e4

=====
*** End of Report ***