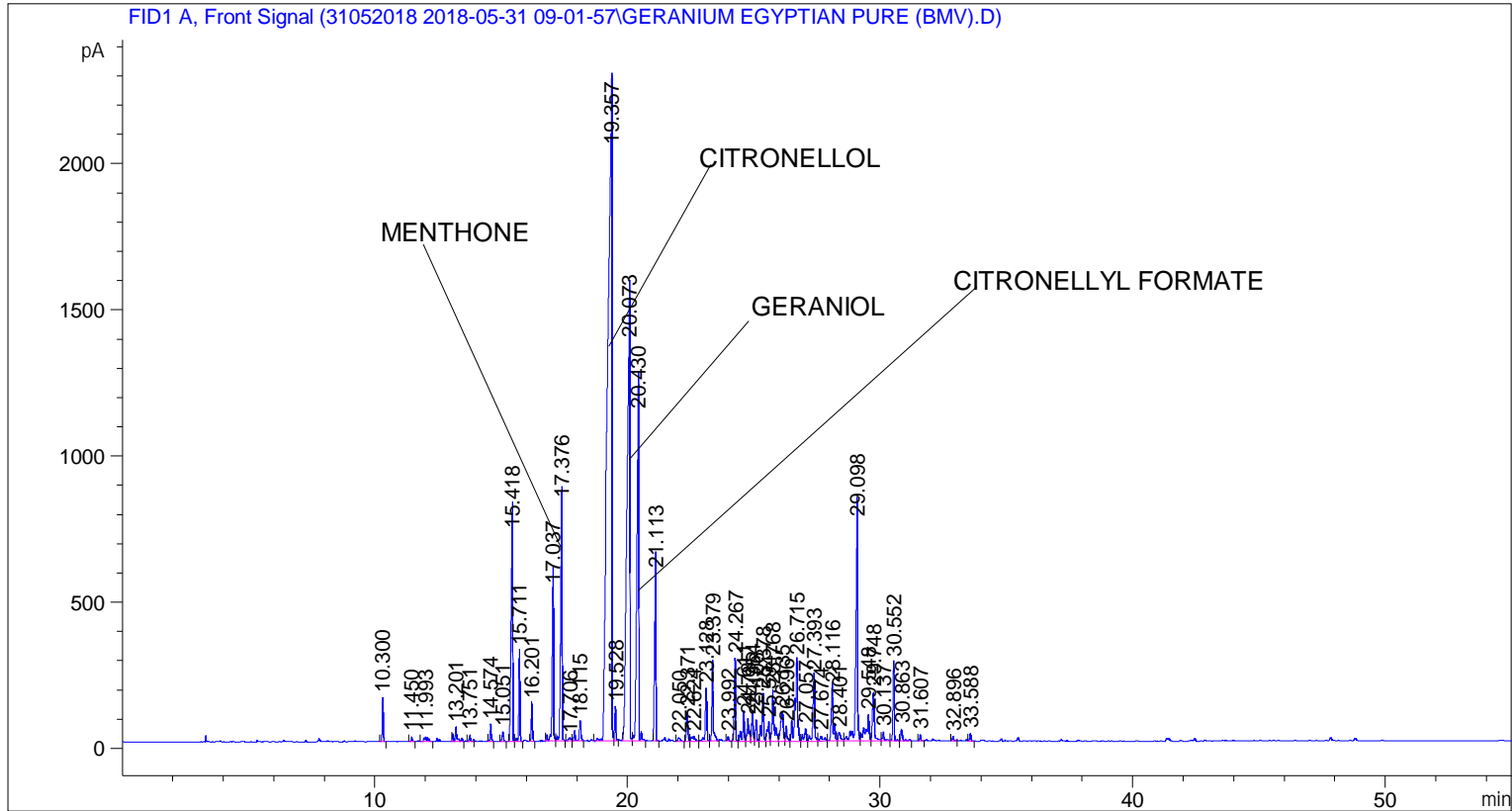


```

=====
Acq. Operator   : SYSTEM                               Seq. Line :    2
Acq. Instrument : BMV_NEW_GC_7820                     Location  : Vial 102
Injection Date  : 5/31/2018 10:21:52 AM                Inj       :    1
                                                    Inj Volume: 0.5 µl

Acq. Method     : C:\CHEM32\2\DATA\31052018 2018-05-31 09-01-57\UNIVERSAL F.M
Last changed    : 5/31/2018 9:02:02 AM by SYSTEM
Analysis Method : C:\CHEM32\2\DATA\31052018 2018-05-31 09-01-57\UNIVERSAL F.M (Sequence
Method)
Last changed    : 6/6/2018 12:09:08 PM by SYSTEM
                (modified after loading)
Additional Info  : Peak(s) manually integrated
  
```



=====  
 Area Percent Report  
 =====

```

Sorted By       :      Signal
Multiplier      :      1.0000
Dilution        :      1.0000
Do not use Multiplier & Dilution Factor with ISTDs
  
```

Signal 1: FID1 A, Front Signal

Peak #	RetTime [min]	Type	Width [min]	Area [pA*s]	Height [pA]	Area %
1	10.300	BB	0.0526	417.78339	149.66866	0.51600
2	11.450	BB	0.0531	43.90517	15.48458	0.05423
3	11.993	BB	0.1151	131.98767	14.93360	0.16302
4	13.201	BB	0.0936	297.41656	44.71858	0.36733
5	13.751	BB	0.0628	76.15381	20.74499	0.09406
6	14.574	BB	0.0623	207.32452	57.13012	0.25606

Peak #	RetTime [min]	Type	Width [min]	Area [pA*s]	Height [pA]	Area %
7	15.051	BB	0.0675	129.79581	31.90516	0.16031
8	15.418	BV	0.0802	3662.34033	710.30957	4.52329
9	15.711	VB	0.0564	965.15637	309.15060	1.19205
10	16.201	BB	0.0519	391.42883	127.20987	0.48345
11	17.037	BV	0.0704	2250.86304	520.55713	2.78000
12	17.376	VB	0.0692	3442.92847	816.07410	4.25230
13	17.706	BV	0.1179	77.70896	10.08996	0.09598
14	18.115	VB	0.0895	405.32745	68.04695	0.50061
15	19.357	BV	0.2095	2.72756e4	2020.05273	33.68763
16	19.528	VB	0.0587	423.94083	115.73375	0.52360
17	20.073	BV	0.1268	1.20046e4	1362.06116	14.82667
18	20.430	VB	0.0910	6420.75537	1117.63843	7.93016
19	21.113	BB	0.0659	2258.32568	574.01868	2.78922
20	22.050	BB	0.1096	78.47285	11.22393	0.09692
21	22.371	BV	0.0710	395.82300	98.35012	0.48887
22	22.624	VV	0.1336	168.17191	16.67675	0.20771
23	23.128	VV	0.0716	798.28986	180.34880	0.98595
24	23.379	VB	0.0639	1025.22913	272.23251	1.26624
25	23.992	BB	0.0605	51.81739	14.93757	0.06400
26	24.267	BV	0.0617	1014.44806	283.77960	1.25293
27	24.611	VV	0.0725	453.72842	100.76022	0.56039
28	24.785	VV	0.0824	407.89423	76.22448	0.50378
29	24.954	VV	0.0629	407.36246	101.38572	0.50313
30	25.106	VV	0.0583	258.71149	71.39039	0.31953
31	25.378	VV	0.0722	722.08679	161.23639	0.89184
32	25.594	VV	0.0874	362.69113	62.80272	0.44795
33	25.768	VV	0.0844	963.30176	174.61636	1.18976
34	26.135	VV	0.1187	707.08020	99.72578	0.87330
35	26.296	VV	0.0679	225.47208	50.65685	0.27848
36	26.715	VV	0.0949	1866.82690	276.07541	2.30568
37	27.057	VV	0.0887	250.36157	42.53110	0.30922
38	27.393	VV	0.0781	1100.46423	220.99899	1.35916
39	27.674	VV	0.1310	172.62347	17.51489	0.21320
40	28.116	VV	0.0875	1060.64819	183.21054	1.30999
41	28.401	VV	0.1085	205.18399	28.31975	0.25342
42	29.098	VV	0.0837	4092.67627	749.31128	5.05479
43	29.548	VV	0.1258	811.67163	89.50169	1.00248
44	29.748	VB	0.0900	947.11377	167.44098	1.16976
45	30.137	BB	0.0861	176.78476	31.21505	0.21834
46	30.552	BV	0.0614	953.07330	268.85266	1.17712
47	30.863	VB	0.0772	206.51939	42.11707	0.25507
48	31.607	BB	0.0558	67.33415	21.96913	0.08316
49	32.896	BB	0.0600	48.04040	14.02221	0.05933
50	33.588	BB	0.0589	83.03766	24.89236	0.10256

Totals : 8.09663e4 1.20398e4

=====  
\*\*\* End of Report \*\*\*