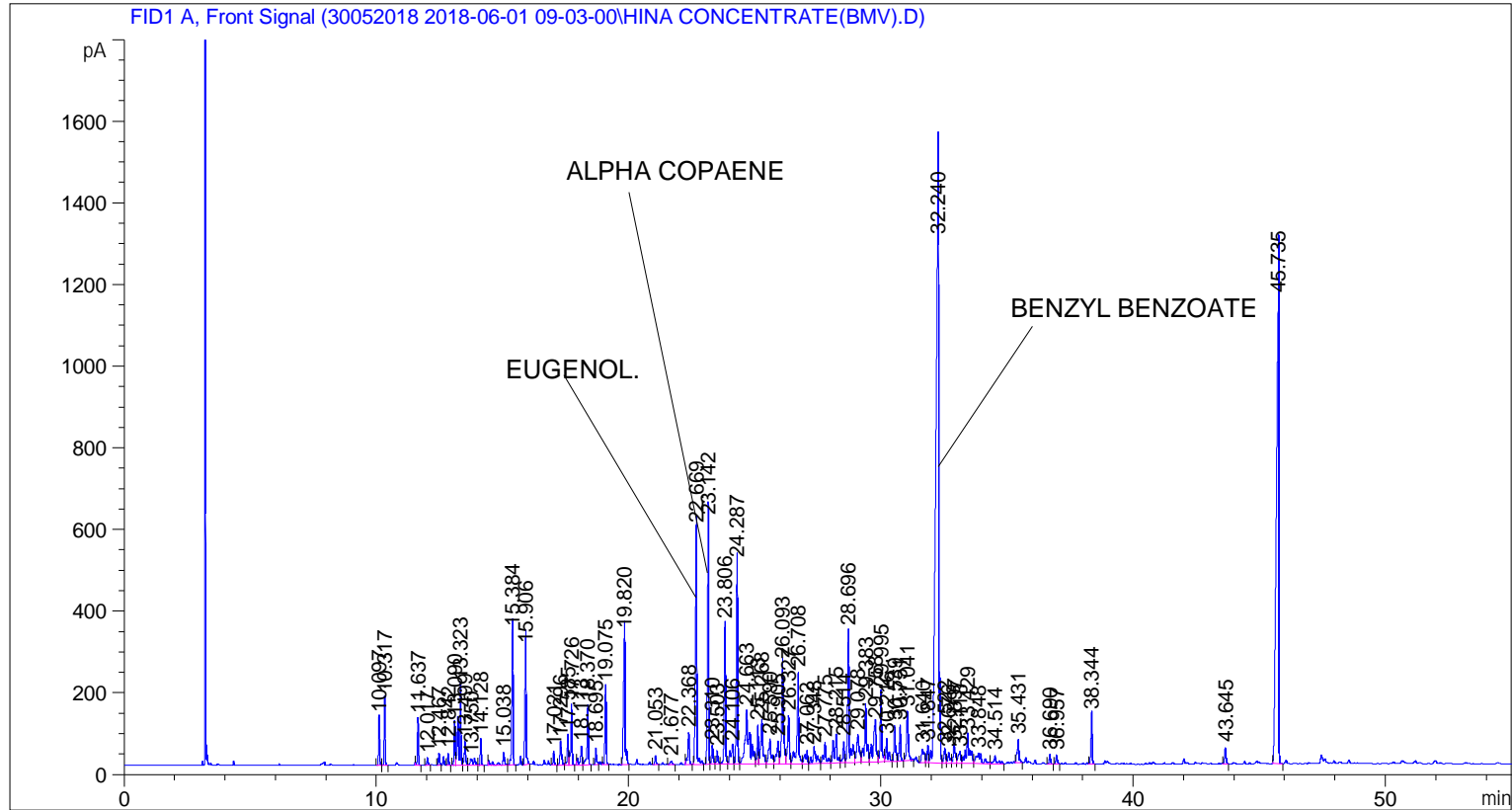


```

=====
Acq. Operator   : SYSTEM                               Seq. Line :    1
Acq. Instrument : BMV_NEW_GC_7820                     Location  : Vial 101
Injection Date  : 6/1/2018 9:16:07 AM                 Inj       :    1
                                                    Inj Volume: 0.5 µl

Acq. Method    : C:\CHEM32\2\DATA\30052018 2018-06-01 09-03-00\UNIVERSAL F.M
Last changed   : 6/1/2018 9:03:07 AM by SYSTEM
Analysis Method : C:\CHEM32\2\DATA\30052018 2018-06-01 09-03-00\UNIVERSAL F.M (Sequence
Method)
Last changed   : 6/7/2018 11:00:07 AM by SYSTEM
                (modified after loading)
Additional Info : Peak(s) manually integrated
  
```



=====
 Area Percent Report
 =====

```

Sorted By      :      Signal
Multiplier     :      1.0000
Dilution       :      1.0000
Do not use Multiplier & Dilution Factor with ISTDs
  
```

Signal 1: FID1 A, Front Signal

Peak #	RetTime [min]	Type	Width [min]	Area [pA*s]	Height [pA]	Area %
1	10.097	BV	0.0532	333.07944	117.00394	0.59423
2	10.317	VB	0.0524	456.50940	164.18068	0.81443
3	11.637	BB	0.0543	337.66388	114.68991	0.60241
4	12.017	BB	0.0600	59.74393	17.41652	0.10659
5	12.467	BB	0.0549	92.96599	27.89202	0.16586
6	12.842	BB	0.0521	86.86822	28.11198	0.15498

Peak #	RetTime [min]	Type	Width [min]	Area [pA*s]	Height [pA]	Area %
7	13.090	BV	0.0546	318.88327	107.43884	0.56890
8	13.323	VV	0.0806	1013.22980	195.03555	1.80765
9	13.499	VB	0.0650	220.12793	57.08875	0.39272
10	13.750	BV	0.1665	169.95674	14.31590	0.30321
11	14.128	VB	0.0548	190.00877	63.71475	0.33898
12	15.038	BV	0.0991	209.69789	30.92114	0.37411
13	15.384	VB	0.0613	1155.71204	326.75226	2.06184
14	15.906	BB	0.0687	1184.71606	283.87509	2.11358
15	17.021	BB	0.0544	99.18464	33.68014	0.17695
16	17.296	BB	0.0807	266.20950	54.79463	0.47493
17	17.585	BV	0.0606	257.95160	74.21475	0.46020
18	17.726	VB	0.0611	514.04657	145.90195	0.91708
19	18.113	BV	0.0746	213.77132	45.68517	0.38138
20	18.370	VB	0.0620	511.32559	141.96967	0.91223
21	18.695	BB	0.0606	148.06133	38.76344	0.26415
22	19.075	BB	0.0580	620.02246	190.53070	1.10615
23	19.820	BB	0.0760	1535.41760	319.75046	2.73925
24	21.053	BB	0.0608	74.73171	21.37926	0.13332
25	21.677	BB	0.1017	49.66235	7.45992	0.08860
26	22.368	BB	0.0707	336.92517	77.51740	0.60109
27	22.669	BB	0.0683	2385.18115	576.69696	4.25527
28	23.142	BV	0.0622	2158.30493	597.29053	3.85051
29	23.310	VV	0.0717	202.17548	45.62081	0.36069
30	23.503	VV	0.0699	136.59172	31.94282	0.24369
31	23.806	VV	0.0612	1208.67590	342.41199	2.15633
32	24.106	VV	0.1066	329.52301	44.41420	0.58788
33	24.287	VV	0.0610	1732.16907	493.07471	3.09026
34	24.663	VV	0.1596	1560.19055	130.39282	2.78345
35	25.113	VV	0.0636	354.50989	94.88428	0.63246
36	25.268	VV	0.0928	638.81915	108.34602	1.13968
37	25.590	VV	0.1188	452.29672	60.76019	0.80692
38	25.905	VV	0.0845	324.62216	55.25615	0.57914
39	26.093	VV	0.0808	1273.84900	244.24162	2.27260
40	26.327	VV	0.0766	572.00684	117.80473	1.02048
41	26.708	VV	0.0849	1161.27319	222.54549	2.07176
42	27.062	VV	0.1005	229.75662	31.72284	0.40990
43	27.348	VV	0.1374	360.09430	37.03360	0.64242
44	27.775	VV	0.0960	330.30423	50.72033	0.58928
45	28.215	VV	0.1097	528.36395	68.69950	0.94262
46	28.514	VV	0.0711	224.64003	51.33324	0.40077
47	28.696	VV	0.0737	1481.66870	322.10913	2.64336
48	29.078	VV	0.1150	485.05380	65.02317	0.86536
49	29.383	VV	0.0898	842.88483	140.93250	1.50374
50	29.758	VV	0.1354	858.27411	93.20506	1.53120
51	29.995	VV	0.0681	706.62366	171.51070	1.26065
52	30.216	VB	0.0781	292.89233	55.06169	0.52253
53	30.539	BV	0.0722	385.46652	86.22460	0.68769
54	30.751	VB	0.0662	346.05951	87.42366	0.61739
55	31.041	BB	0.0819	595.64703	119.93558	1.06266
56	31.640	BV	0.1108	249.70625	33.55253	0.44549
57	31.847	VV	0.0609	159.85818	41.49744	0.28519
58	32.240	VV	0.1249	1.15309e4	1282.10962	20.57163
59	32.522	VV	0.0814	173.71948	35.28350	0.30992
60	32.676	VV	0.0869	149.24461	26.03334	0.26626

Peak #	RetTime [min]	Type	Width [min]	Area [pA*s]	Height [pA]	Area %
61	32.897	VV	0.0942	251.74339	41.82093	0.44912
62	33.118	VV	0.1241	204.53180	25.90527	0.36489
63	33.429	VV	0.1285	692.37561	71.80278	1.23523
64	33.848	VB	0.1920	381.71036	25.29858	0.68099
65	34.514	BB	0.1197	169.14189	19.79310	0.30176
66	35.431	BB	0.0798	285.42426	55.69818	0.50921
67	36.690	BB	0.0617	80.81479	22.61356	0.14418
68	36.957	BB	0.0708	90.55048	20.80242	0.16155
69	38.344	BB	0.0626	438.09778	120.00588	0.78159
70	43.645	BB	0.0665	161.06184	40.37042	0.28734
71	45.735	BB	0.1062	8419.18359	1139.63599	15.02018

Totals : 5.60525e4 1.02489e4

=====
*** End of Report ***