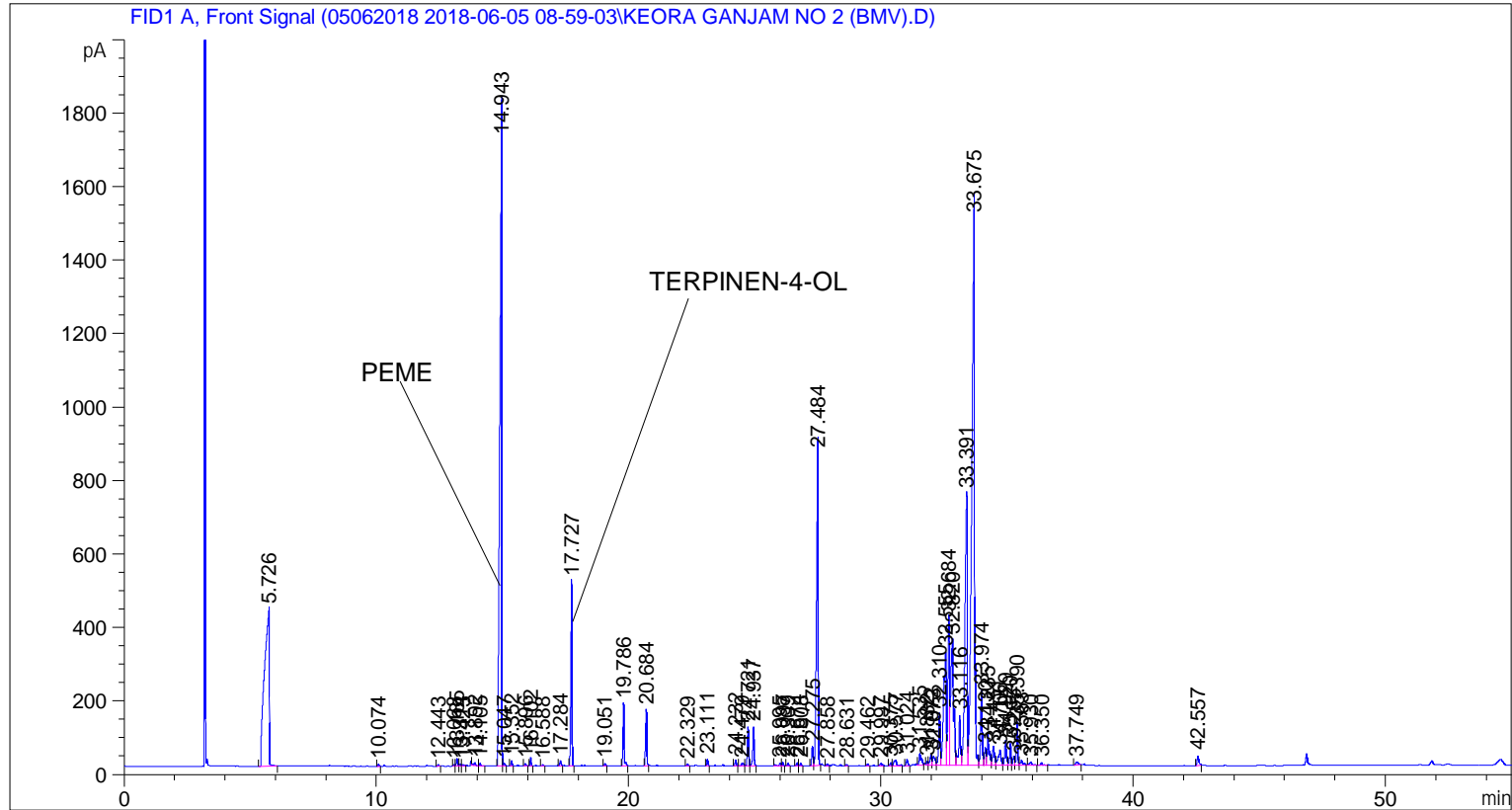


```

=====
Acq. Operator   : SYSTEM                               Seq. Line :    4
Acq. Instrument : BMV_NEW_GC_7820                     Location  : Vial 104
Injection Date  : 6/5/2018 12:34:28 PM                 Inj       :    1
                                                    Inj Volume: 0.5 µl

Acq. Method    : C:\CHEM32\2\DATA\05062018 2018-06-05 08-59-03\UNIVERSAL F.M
Last changed   : 6/5/2018 8:59:09 AM by SYSTEM
Analysis Method: C:\CHEM32\2\DATA\05062018 2018-06-05 08-59-03\UNIVERSAL F.M (Sequence
Method)
Last changed   : 6/7/2018 11:20:39 AM by SYSTEM
                (modified after loading)
Additional Info : Peak(s) manually integrated
  
```



=====
 Area Percent Report
 =====

```

Sorted By      :      Signal
Multiplier     :      1.0000
Dilution      :      1.0000
Do not use Multiplier & Dilution Factor with ISTDs
  
```

Signal 1: FID1 A, Front Signal

Peak #	RetTime [min]	Type	Width [min]	Area [pA*s]	Height [pA]	Area %
1	5.726	BB	0.1765	5721.03027	426.46176	10.81411
2	10.074	BB	0.0433	14.57843	5.44247	0.02756
3	12.443	BB	0.0453	10.45729	3.66857	0.01977
4	13.068	BV	0.0411	10.39972	3.90356	0.01966
5	13.185	VV	0.0614	78.15606	21.00224	0.14773
6	13.314	VV	0.0505	20.47336	6.20710	0.03870

Sample Name: KEORA GANJAM NO 2 (BMV)

Peak #	RetTime [min]	Type	Width [min]	Area [pA*s]	Height [pA]	Area %
7	13.423	VB	0.0552	15.71665	4.24131	0.02971
8	13.892	BV	0.0605	34.06325	8.19066	0.06439
9	14.105	VB	0.0434	18.62108	6.92439	0.03520
10	14.943	BV	0.0795	9858.08496	1703.78833	18.63412
11	15.047	VB	0.0585	26.57228	6.67353	0.05023
12	15.352	BB	0.0446	40.55550	14.50249	0.07666
13	15.896	BB	0.0569	25.61059	6.97255	0.04841
14	16.102	BB	0.0462	63.76704	23.09869	0.12053
15	16.588	BB	0.0497	12.24084	3.99856	0.02314
16	17.284	BB	0.0549	49.81081	14.22274	0.09415
17	17.727	BB	0.0547	1670.38538	503.68176	3.15743
18	19.051	BB	0.0511	22.92605	7.20963	0.04334
19	19.786	BB	0.0522	547.89783	167.48499	1.03566
20	20.684	BB	0.0530	504.07413	150.84770	0.95282
21	22.329	BB	0.0519	21.45448	6.60329	0.04055
22	23.111	BB	0.0505	57.38150	18.32377	0.10846
23	24.232	BB	0.0531	54.83590	16.35037	0.10365
24	24.479	BV	0.0823	47.96658	7.95474	0.09067
25	24.721	VV	0.0542	350.29074	106.92535	0.66213
26	24.937	VB	0.0563	383.99561	105.91008	0.72584
27	25.995	BV	0.0987	56.18004	8.11906	0.10619
28	26.097	VB	0.0541	38.41789	10.65818	0.07262
29	26.309	BB	0.0523	23.01776	7.01023	0.04351
30	26.674	BV	0.0579	34.30708	9.56110	0.06485
31	26.808	VB	0.0511	25.52165	8.02989	0.04824
32	27.275	BV	0.0652	217.05029	53.67360	0.41028
33	27.484	VB	0.0696	4051.85205	849.82898	7.65896
34	27.858	BB	0.0501	12.87873	3.93979	0.02434
35	28.631	BB	0.0502	13.28284	4.05806	0.02511
36	29.462	BB	0.0505	15.37462	4.91398	0.02906
37	29.997	BB	0.0790	39.24396	7.04907	0.07418
38	30.375	BV	0.0534	26.90209	7.95975	0.05085
39	30.577	VB	0.1052	123.51081	15.79210	0.23346
40	31.024	BB	0.0709	73.52611	16.21728	0.13898
41	31.535	BB	0.0845	191.94041	31.78281	0.36281
42	31.832	BV	0.0613	41.92725	10.34640	0.07925
43	31.972	VV	0.0716	128.98796	27.06892	0.24382
44	32.073	VV	0.0944	168.66968	24.46842	0.31883
45	32.310	VV	0.0685	617.55896	142.61708	1.16733
46	32.555	VV	0.1021	2318.00854	307.07913	4.38159
47	32.684	VV	0.0690	1825.57703	401.84665	3.45077
48	32.820	VV	0.1162	2644.36865	341.93622	4.99849
49	33.116	VV	0.0721	673.02173	135.16531	1.27217
50	33.391	VV	0.1088	4861.18066	738.26190	9.18879
51	33.675	VV	0.1038	1.14484e4	1487.94470	21.64013
52	33.974	VV	0.0654	867.34021	204.79625	1.63948
53	34.130	VV	0.0645	203.30795	46.97165	0.38430
54	34.235	VV	0.0788	471.37561	84.93037	0.89101
55	34.451	VV	0.0819	280.52332	51.23661	0.53026
56	34.706	VV	0.1080	318.56424	40.41710	0.60216
57	34.929	VV	0.0751	327.94943	67.03562	0.61990
58	35.120	VV	0.0599	223.62164	59.46532	0.42270
59	35.255	VV	0.0663	101.42247	23.54613	0.19171
60	35.390	VB	0.0550	412.57050	117.53004	0.77986

Peak #	RetTime [min]	Type	Width [min]	Area [pA*s]	Height [pA]	Area %
61	35.563	BB	0.0932	86.35035	13.05096	0.16322
62	35.930	BB	0.1007	56.58930	7.79801	0.10697
63	36.350	BB	0.0684	30.67125	6.82687	0.05798
64	37.749	BB	0.1048	58.14884	8.39587	0.10992
65	42.557	BB	0.0751	132.94879	26.25771	0.25130

Totals : 5.29034e4 8764.17776

=====

*** End of Report ***