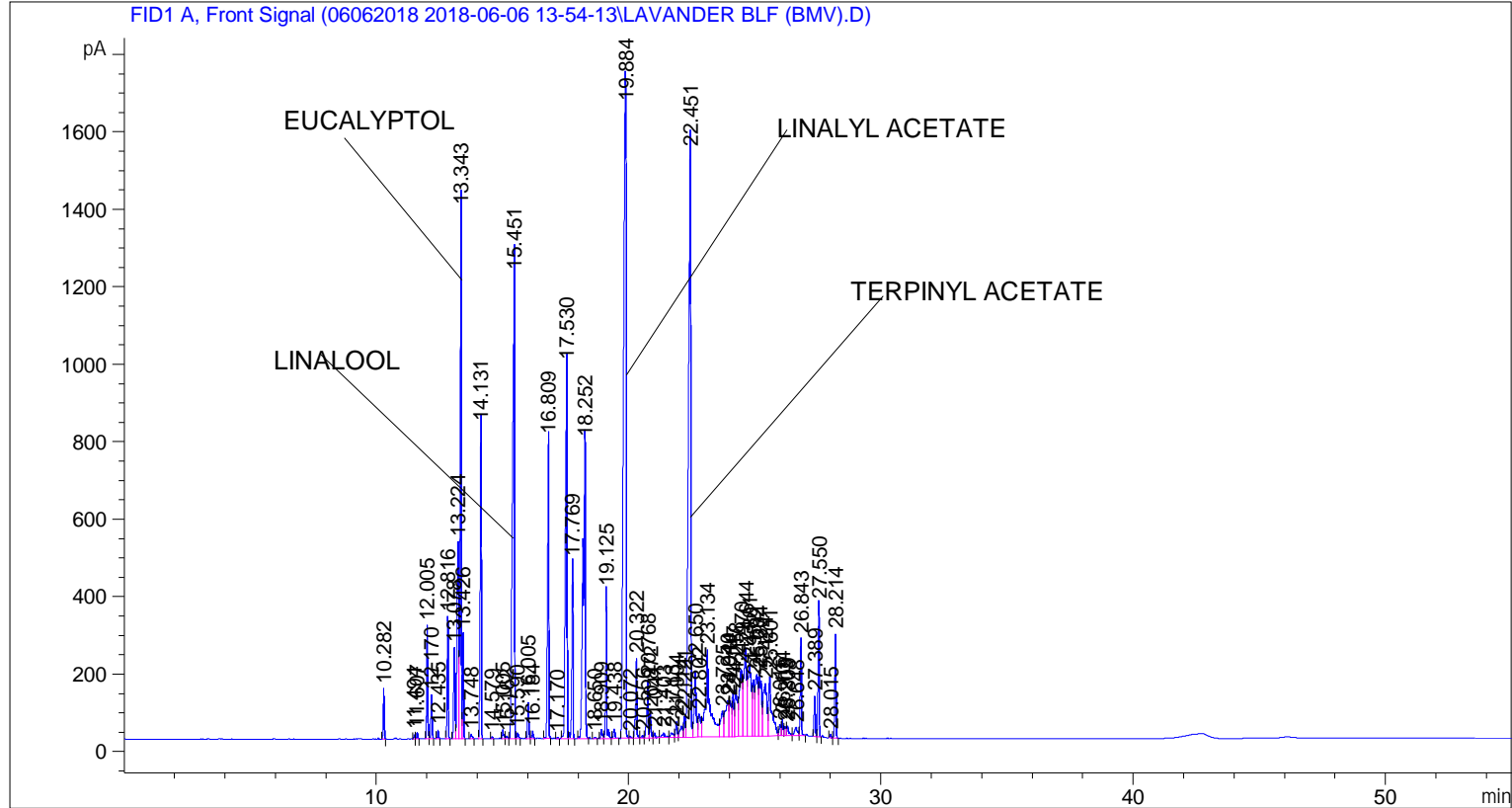


=====

Acq. Operator	: SYSTEM	Seq. Line	: 3
Acq. Instrument	: BMV_NEW_GC_7820	Location	: Vial 103
Injection Date	: 6/6/2018 4:16:30 PM	Inj	: 1
		Inj Volume	: 0.5 µl
Acq. Method	: C:\CHEM32\2\DATA\06062018 2018-06-06 13-54-13\UNIVERSAL F.M		
Last changed	: 6/6/2018 1:54:13 PM by SYSTEM		
Analysis Method	: C:\CHEM32\2\DATA\06062018 2018-06-06 13-54-13\UNIVERSAL F.M (Sequence Method)		
Last changed	: 6/11/2018 12:13:54 PM by SYSTEM (modified after loading)		



=====
Area Percent Report
=====

Sorted By : Signal
Multiplier : 1.0000
Dilution : 1.0000
Do not use Multiplier & Dilution Factor with ISTDs

Signal 1: FID1 A, Front Signal

Peak #	RetTime [min]	Type	Width [min]	Area [pA*s]	Height [pA]	Area %
1	10.282	BB	0.0438	353.84146	129.65622	0.41830
2	11.494	BV	0.0433	28.13294	10.49276	0.03326
3	11.607	VB	0.0448	47.45008	16.89065	0.05609
4	12.005	BV	0.0489	870.08850	290.65250	1.02858
5	12.170	VB	0.0501	346.89749	111.99682	0.41009
6	12.435	BB	0.0482	66.46285	22.65888	0.07857
7	12.816	BB	0.0482	924.09833	315.05963	1.09243

Sample Name: LAVANDER BLF (BMV)

Peak #	RetTime [min]	Type	Width [min]	Area [pA*s]	Height [pA]	Area %
8	13.078	BV	0.0618	884.62366	235.87810	1.04576
9	13.224	VV	0.0712	2317.07544	507.74283	2.73914
10	13.343	VV	0.0565	4974.49854	1364.12134	5.88063
11	13.426	VB	0.0406	708.25269	270.17853	0.83726
12	13.748	BB	0.0621	47.83890	11.13876	0.05655
13	14.131	BB	0.0518	2609.60742	804.57031	3.08496
14	14.579	BB	0.0490	17.91695	5.64958	0.02118
15	15.005	BV	0.0563	86.29336	22.75041	0.10201
16	15.162	VV	0.0639	29.73522	6.94548	0.03515
17	15.451	VV	0.0809	7067.10352	1196.88782	8.35441
18	15.590	VB	0.0622	61.72875	14.94824	0.07297
19	16.005	BB	0.0527	309.00644	93.13456	0.36529
20	16.184	BB	0.0558	67.75128	18.88874	0.08009
21	16.809	BB	0.0587	2824.16992	772.52087	3.33861
22	17.170	BB	0.0481	10.67752	3.44918	0.01262
23	17.530	BV	0.0774	4578.84033	964.29376	5.41290
24	17.769	VB	0.0520	1489.14978	456.98138	1.76041
25	18.252	BB	0.0850	4779.68848	764.36377	5.65033
26	18.650	BB	0.0520	13.28197	4.07551	0.01570
27	18.909	BV	0.0648	105.90365	23.38941	0.12519
28	19.125	VB	0.0604	1509.67017	379.56091	1.78466
29	19.438	BB	0.0703	104.17711	23.21864	0.12315
30	19.884	BV	0.1161	1.23870e4	1719.12024	14.64334
31	20.072	VV	0.0637	20.05918	4.52684	0.02371
32	20.322	VB	0.0557	736.17255	205.98442	0.87027
33	20.556	BV	0.0639	28.19959	6.59079	0.03334
34	20.768	VV	0.0569	541.37939	147.27452	0.63999
35	20.872	VV	0.0619	249.62303	63.43671	0.29509
36	21.041	VB	0.0652	53.14529	12.58985	0.06283
37	21.403	BV	0.1108	104.26343	12.56329	0.12326
38	21.713	VV	0.1102	84.45667	11.70434	0.09984
39	21.904	VV	0.0650	176.17773	40.32321	0.20827
40	22.114	VV	0.1081	214.15836	28.35395	0.25317
41	22.221	VV	0.0661	228.72668	53.30709	0.27039
42	22.451	VV	0.0910	9716.16699	1510.89966	11.48601
43	22.650	VV	0.0771	921.20764	170.35339	1.08901
44	22.802	VV	0.0979	429.16269	58.32092	0.50734
45	23.134	VB	0.1575	2756.39453	224.12675	3.25849
46	23.725	BV	0.1071	513.05475	65.66917	0.60651
47	23.940	VV	0.1282	878.67737	93.03181	1.03873
48	24.014	VV	0.0850	583.89844	93.30906	0.69026
49	24.147	VV	0.0784	593.24878	110.90892	0.70131
50	24.258	VV	0.1028	892.37219	119.88319	1.05492
51	24.470	VV	0.1057	1326.50708	172.54918	1.56814
52	24.644	VV	0.1206	2007.11829	228.13736	2.37272
53	24.801	VV	0.1230	1792.77405	188.49739	2.11934
54	24.952	VV	0.0815	786.42468	144.47644	0.92968
55	25.092	VV	0.1069	1301.14075	159.89613	1.53815
56	25.204	VV	0.0991	1235.15771	161.65959	1.46015
57	25.424	VV	0.1319	1353.11841	133.94795	1.59960
58	25.601	VV	0.1304	1422.99170	153.20526	1.68220
59	26.016	VV	0.0694	136.30293	28.69579	0.16113
60	26.104	VV	0.0678	199.54843	43.25983	0.23590
61	26.203	VV	0.0624	102.63441	23.74655	0.12133

Peak #	RetTime [min]	Type	Width [min]	Area [pA*s]	Height [pA]	Area %
62	26.309	VV	0.0982	170.75041	24.83002	0.20185
63	26.648	VV	0.1040	164.51189	21.80607	0.19448
64	26.843	VB	0.0529	835.55994	250.35609	0.98776
65	27.389	BV	0.0559	353.78961	103.57136	0.41823
66	27.550	VB	0.0523	1126.19727	343.00259	1.33134
67	28.015	BV	0.0501	28.76391	9.30793	0.03400
68	28.214	VB	0.0554	906.48779	268.58731	1.07161

Totals : 8.45913e4 1.60539e4

=====
*** End of Report ***