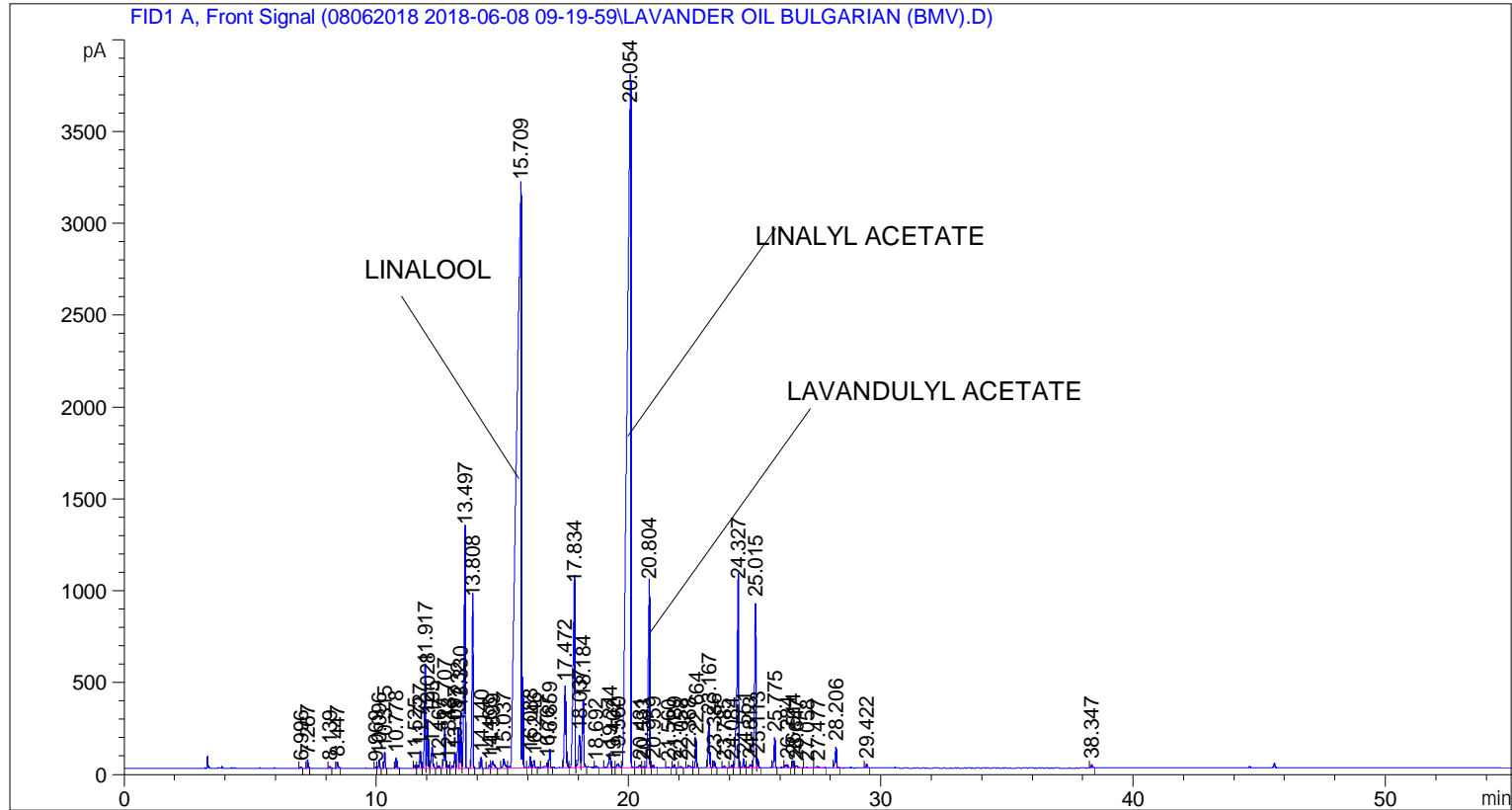


```

=====
Acq. Operator   : SYSTEM                               Seq. Line :    1
Acq. Instrument : BMV_NEW_GC_7820                     Location  : Vial 101
Injection Date  : 6/8/2018 9:33:26 AM                 Inj       :    1
                                                    Inj Volume: 0.5 µl

Acq. Method     : C:\CHEM32\2\DATA\08062018 2018-06-08 09-19-59\UNIVERSAL F.M
Last changed    : 6/8/2018 9:20:05 AM by SYSTEM
Analysis Method : C:\CHEM32\2\DATA\08062018 2018-06-08 09-19-59\UNIVERSAL F.M (Sequence
Method)
Last changed    : 6/11/2018 12:46:40 PM by SYSTEM
                (modified after loading)

Additional Info  : Peak(s) manually integrated
  
```



=====  
 Area Percent Report  
 =====

```

Sorted By      :      Signal
Multiplier     :      1.0000
Dilution       :      1.0000
Do not use Multiplier & Dilution Factor with ISTDs
  
```

Signal 1: FID1 A, Front Signal

Peak #	RetTime [min]	Type	Width [min]	Area [pA*s]	Height [pA]	Area %
1	6.996	BB	0.0425	25.98993	9.93370	0.02118
2	7.267	BB	0.0419	124.10136	42.73279	0.10113
3	8.139	BB	0.0573	35.24393	9.07095	0.02872
4	8.447	BB	0.0527	113.53893	32.57869	0.09252
5	9.969	BV	0.0447	18.72746	6.68491	0.01526
6	10.096	VB	0.0455	123.67307	43.01315	0.10078

Peak #	RetTime [min]	Type	Width [min]	Area [pA*s]	Height [pA]	Area %
7	10.315	BB	0.0450	234.71158	82.91174	0.19126
8	10.778	BB	0.0468	166.90698	55.99360	0.13601
9	11.525	BV	0.0481	52.50807	16.99261	0.04279
10	11.727	VV	0.0697	396.42834	93.14896	0.32304
11	11.917	VV	0.0558	1823.11890	534.74194	1.48560
12	12.028	VV	0.0493	740.45935	259.39334	0.60338
13	12.195	VB	0.0722	493.41980	110.20862	0.40207
14	12.467	BB	0.0654	53.20891	12.55649	0.04336
15	12.707	BV	0.0583	828.96356	228.82291	0.67550
16	12.843	VV	0.0480	47.79070	15.50063	0.03894
17	13.097	VV	0.0539	271.47775	75.53206	0.22122
18	13.232	VV	0.0582	770.59625	213.19588	0.62794
19	13.330	VV	0.0466	873.90540	294.77780	0.71212
20	13.497	VB	0.0597	4848.82373	1295.64233	3.95116
21	13.808	BB	0.0506	2985.57666	901.42603	2.43286
22	14.140	BB	0.0441	166.65134	60.60913	0.13580
23	14.466	BV	0.0676	71.97401	16.28285	0.05865
24	14.599	VB	0.0821	211.62611	37.37180	0.17245
25	15.037	BV	0.0765	274.68488	49.65496	0.22383
26	15.709	VV	0.1736	4.17145e4	3168.74268	33.99185
27	16.088	VV	0.0442	172.52948	62.41827	0.14059
28	16.246	VB	0.0570	161.82533	41.99881	0.13187
29	16.767	BV	0.0714	132.05336	25.93376	0.10761
30	16.859	VB	0.0465	290.63989	98.23222	0.23683
31	17.472	BV	0.0674	1944.93994	441.30881	1.58487
32	17.834	VV	0.0829	4929.53564	977.15448	4.01693
33	18.037	VV	0.0707	803.90784	171.35876	0.65508
34	18.184	VB	0.0718	1555.95471	350.58994	1.26790
35	18.692	BB	0.0624	44.24937	10.24569	0.03606
36	19.244	BV	0.0735	388.55515	78.86131	0.31662
37	19.402	VV	0.0672	19.22568	4.75188	0.01567
38	19.560	VV	0.0966	141.01929	22.67366	0.11491
39	20.054	VV	0.1363	3.84163e4	3854.53589	31.30429
40	20.431	VV	0.1014	90.83587	14.43934	0.07402
41	20.583	VV	0.0507	29.32114	8.84449	0.02389
42	20.804	VV	0.0686	4143.28076	994.31818	3.37623
43	20.959	VB	0.0490	57.33460	18.05659	0.04672
44	21.560	BB	0.0637	16.37553	4.00719	0.01334
45	21.789	BB	0.0549	63.02568	18.91122	0.05136
46	22.058	BB	0.0517	32.53635	9.56029	0.02651
47	22.368	BV	0.0802	81.01769	13.85116	0.06602
48	22.664	VB	0.0541	500.87985	153.19278	0.40815
49	23.167	BB	0.0554	955.86243	256.94604	0.77890
50	23.386	BB	0.0580	129.11964	35.82781	0.10522
51	23.785	BB	0.0662	47.34305	11.00331	0.03858
52	24.084	BV	0.0611	58.06298	15.03353	0.04731
53	24.327	VV	0.0715	4742.23242	996.53430	3.86430
54	24.551	VV	0.0514	160.12102	47.35403	0.13048
55	24.813	VV	0.0869	112.93079	17.59336	0.09202
56	25.015	VV	0.0593	3339.96680	899.79266	2.72164
57	25.113	VB	0.0510	158.33621	47.34930	0.12902
58	25.775	BB	0.0537	524.04199	162.13557	0.42703
59	26.284	BB	0.0832	116.06171	19.00849	0.09458
60	26.514	BV	0.0489	124.06896	39.18305	0.10110

Peak #	RetTime [min]	Type	Width [min]	Area [pA*s]	Height [pA]	Area %
61	26.647	VB	0.1217	88.78976	10.60353	0.07235
62	27.058	BB	0.0729	25.09466	4.80409	0.02045
63	27.477	BB	0.0945	73.39699	10.37410	0.05981
64	28.206	BB	0.0559	425.24704	112.91924	0.34652
65	29.422	BB	0.0555	73.02029	21.56605	0.05950
66	38.347	BB	0.0665	81.38783	18.79419	0.06632

Totals : 1.22719e5 1.77696e4

=====  
\*\*\* End of Report \*\*\*