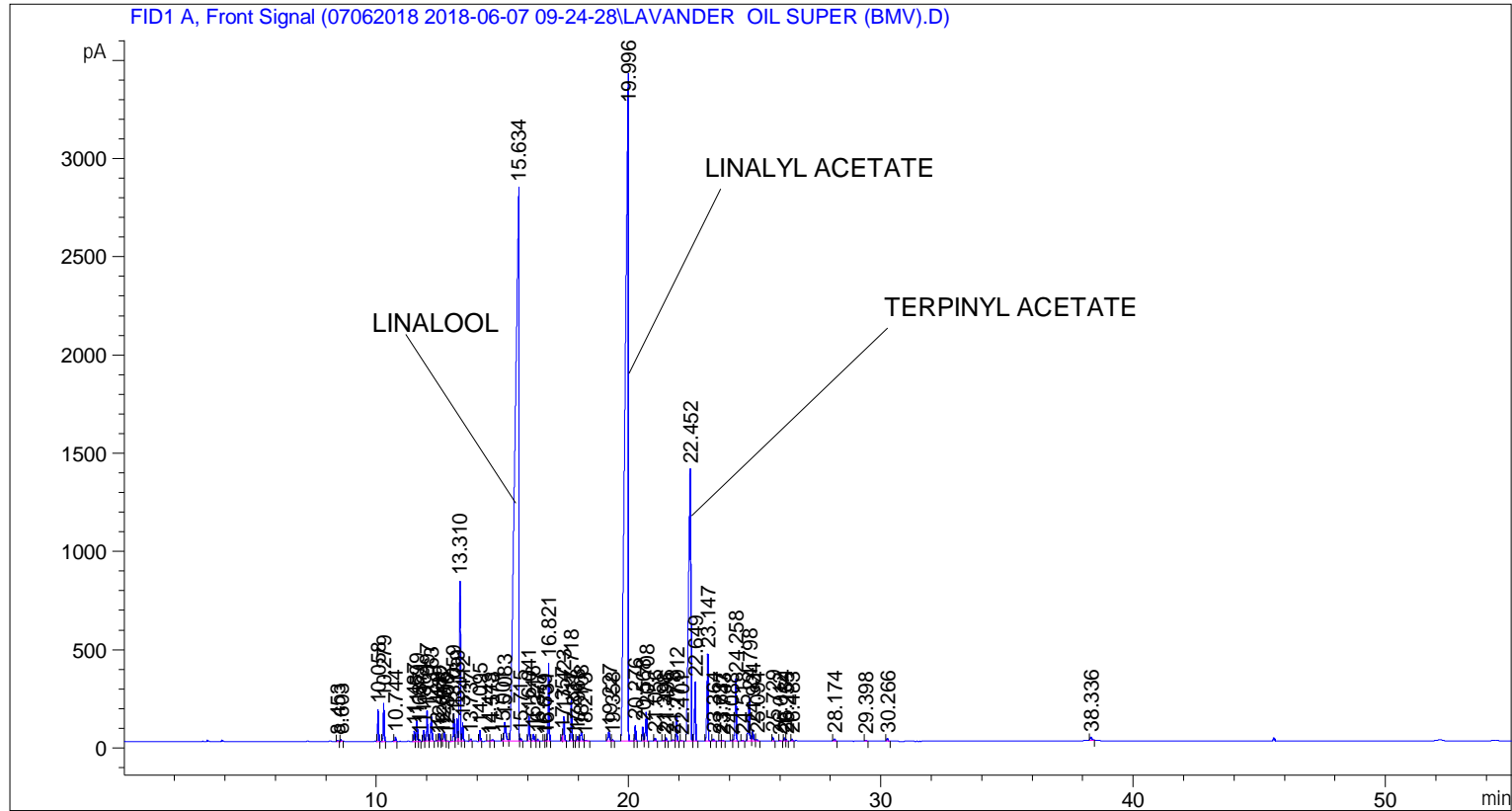


```

=====
Acq. Operator   : SYSTEM                               Seq. Line :    6
Acq. Instrument : BMV_NEW_GC_7820                     Location  : Vial 106
Injection Date  : 6/7/2018 3:13:41 PM                 Inj       :    1
                                                    Inj Volume: 0.5 µl

Method          : C:\CHEM32\2\DATA\07062018 2018-06-07 09-24-28\UNIVERSAL F.M (Sequence
                  Method)
Last changed    : 6/7/2018 9:24:33 AM by SYSTEM
Additional Info  : Peak(s) manually integrated
  
```



=====  
 Area Percent Report  
 =====

```

Sorted By      : Signal
Multiplier     : 1.0000
Dilution      : 1.0000
Do not use Multiplier & Dilution Factor with ISTDs
  
```

Signal 1: FID1 A, Front Signal

Peak #	RetTime [min]	Type	Width [min]	Area [pA*s]	Height [pA]	Area %
1	8.453	BB	0.0458	13.38675	4.36016	0.01569
2	8.603	BB	0.0396	21.03798	8.30373	0.02466
3	10.058	BB	0.0419	427.05017	161.33856	0.50067
4	10.279	BB	0.0421	523.17511	196.12793	0.61336
5	10.744	BB	0.0432	55.39166	20.08451	0.06494
6	11.487	BV	0.0426	141.26984	52.19372	0.16562
7	11.599	VV	0.0435	293.60260	105.50748	0.34422
8	11.687	VB	0.0431	24.48868	8.91257	0.02871
9	11.864	BV	0.0425	148.71350	55.04642	0.17435

Sample Name: LAVANDER OIL SUPER (BMV)

Peak #	RetTime [min]	Type	Width [min]	Area [pA*s]	Height [pA]	Area %
10	11.997	VV	0.0477	488.41769	155.37039	0.57262
11	12.163	VB	0.0490	430.30234	135.61438	0.50448
12	12.429	BV	0.0371	15.29504	6.35503	0.01793
13	12.489	VV	0.0440	111.34388	38.24346	0.13054
14	12.616	VV	0.0348	20.26675	9.16357	0.02376
15	12.672	VB	0.0460	142.34550	47.43728	0.16688
16	12.806	BB	0.0450	8.22081	2.82061	0.00964
17	13.059	BV	0.0460	426.93839	142.38065	0.50054
18	13.189	VV	0.0513	388.53296	118.19990	0.45551
19	13.310	VV	0.0482	2462.31641	816.50684	2.88679
20	13.412	VB	0.0427	252.75592	93.03355	0.29633
21	13.737	BB	0.0447	36.43070	12.62624	0.04271
22	14.095	BB	0.0433	155.71582	56.18346	0.18256
23	14.443	BV	0.0561	10.18099	2.82376	0.01194
24	14.578	VB	0.0688	37.19830	8.06943	0.04361
25	15.001	BV	0.0396	33.83571	12.91582	0.03967
26	15.083	VB	0.0696	464.57874	97.45767	0.54467
27	15.634	BV	0.1278	2.97082e4	2821.40625	34.82956
28	15.715	VB	0.0372	40.14272	16.60731	0.04706
29	16.041	BV	0.0488	416.64871	128.55251	0.48847
30	16.216	VB	0.0515	125.51706	36.14419	0.14715
31	16.377	BB	0.0414	26.98356	10.37007	0.03164
32	16.659	BV	0.0458	8.59555	2.79822	0.01008
33	16.731	VV	0.0369	18.20576	7.60809	0.02134
34	16.821	VB	0.0480	1193.43420	397.36279	1.39917
35	17.357	BV	0.0371	82.17886	34.06585	0.09635
36	17.423	VB	0.0511	426.25085	127.10940	0.49973
37	17.718	BB	0.0445	642.91968	223.72717	0.75375
38	17.831	BB	0.0525	11.82022	3.24131	0.01386
39	17.968	BV	0.0482	76.45940	23.95520	0.08964
40	18.108	VB	0.0645	186.05510	44.77414	0.21813
41	18.273	BB	0.0725	23.39037	4.51037	0.02742
42	19.227	BV	0.0692	220.03368	48.24015	0.25796
43	19.358	VB	0.0601	25.82779	6.53956	0.03028
44	19.996	BV	0.1050	2.92583e4	3412.83301	34.30206
45	20.276	VB	0.0429	221.17661	81.01010	0.25930
46	20.568	BV	0.0431	192.62561	69.92608	0.22583
47	20.708	VB	0.0485	486.33765	147.20580	0.57018
48	21.056	BB	0.0458	51.54337	17.29963	0.06043
49	21.398	BV	0.0561	15.72854	4.16381	0.01844
50	21.496	VB	0.0454	51.46401	17.46476	0.06034
51	21.778	BV	0.0585	29.63431	7.59309	0.03474
52	21.912	VB	0.0478	415.74396	135.31335	0.48741
53	22.101	BB	0.0546	10.30707	2.95981	0.01208
54	22.452	BV	0.0853	9174.20215	1384.17810	10.75573
55	22.649	VB	0.0482	900.69617	298.67953	1.05597
56	23.147	BB	0.0479	1444.39014	444.91132	1.69339
57	23.364	BB	0.0460	32.12680	11.03647	0.03767
58	23.637	BV	0.0453	16.79625	5.87851	0.01969
59	23.743	VB	0.0450	11.83481	4.31427	0.01387
60	24.088	BV	0.0418	10.23449	3.88012	0.01200
61	24.258	VB	0.0505	1055.42371	319.57883	1.23737
62	24.518	BB	0.0497	21.23525	6.39753	0.02490
63	24.798	BV	0.0584	909.38934	228.60857	1.06616

Peak #	RetTime [min]	Type	Width [min]	Area [pA*s]	Height [pA]	Area %
64	24.934	VV	0.0532	198.28700	54.85467	0.23247
65	25.094	VB	0.0660	35.81030	8.35147	0.04198
66	25.729	BB	0.0509	59.93821	18.46722	0.07027
67	26.012	BB	0.0553	13.06729	3.69447	0.01532
68	26.184	BV	0.0497	58.55314	17.67313	0.06865
69	26.255	VB	0.0451	17.94685	6.13177	0.02104
70	26.483	BB	0.0487	33.47238	10.94127	0.03924
71	28.174	BB	0.0575	53.85337	14.10649	0.06314
72	29.398	BB	0.0565	23.49101	6.45450	0.02754
73	30.266	BB	0.0539	45.79256	13.38393	0.05369
74	38.336	BB	0.0684	81.12650	17.08502	0.09511

Totals : 8.52960e4 1.30785e4

=====  
\*\*\* End of Report \*\*\*