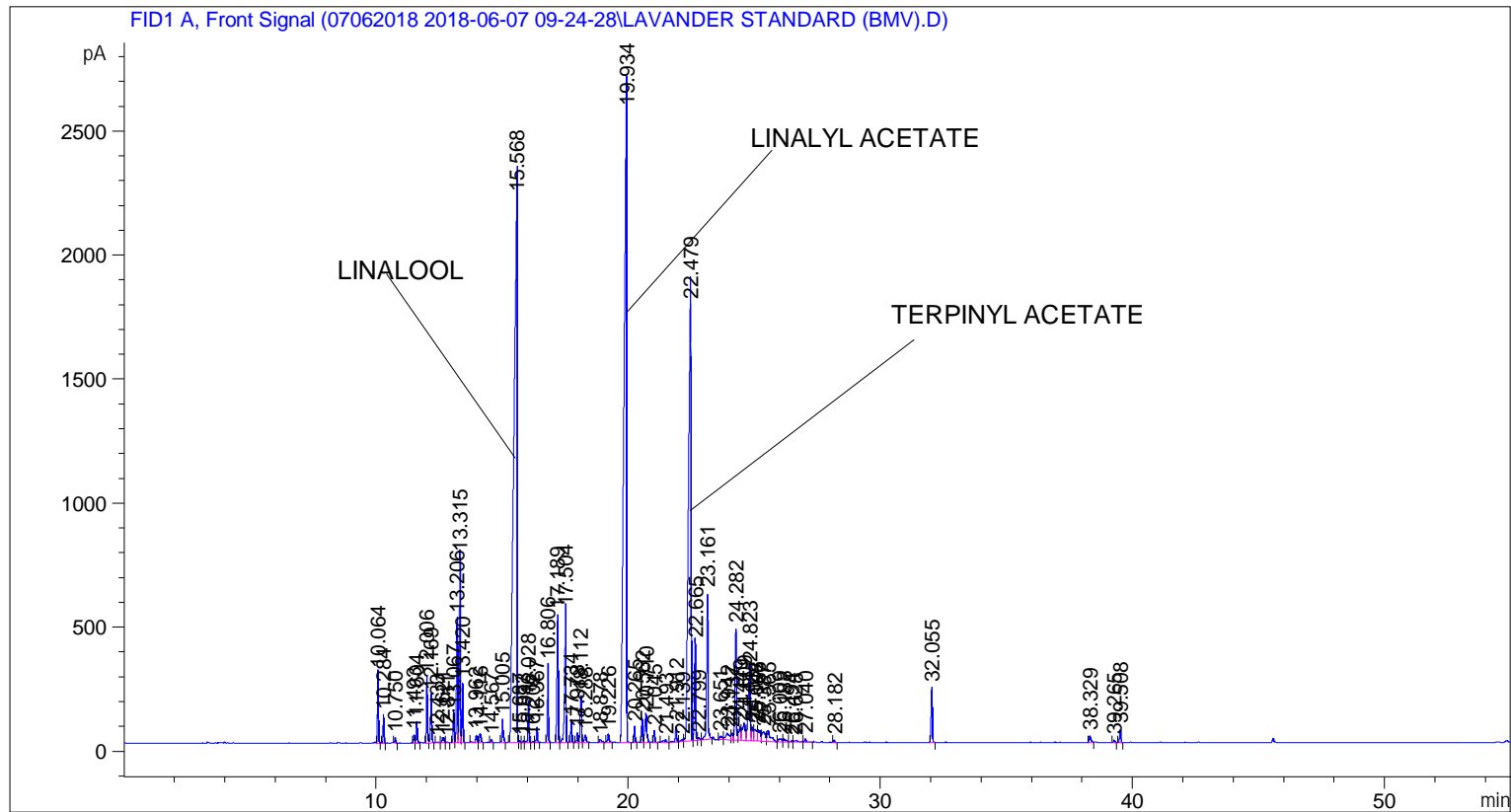


```

=====
Acq. Operator   : SYSTEM                               Seq. Line :    5
Acq. Instrument : BMV_NEW_GC_7820                     Location  : Vial 105
Injection Date  : 6/7/2018 2:06:21 PM                 Inj       :    1
                                                    Inj Volume: 0.5 µl

Acq. Method     : C:\CHEM32\2\DATA\07062018 2018-06-07 09-24-28\UNIVERSAL F.M
Last changed    : 6/7/2018 9:24:33 AM by SYSTEM
Analysis Method : C:\CHEM32\2\DATA\07062018 2018-06-07 09-24-28\UNIVERSAL F.M (Sequence
Method)
Last changed    : 6/11/2018 12:18:49 PM by SYSTEM
                  (modified after loading)
Additional Info  : Peak(s) manually integrated
  
```



=====
 Area Percent Report
 =====

```

Sorted By       :      Signal
Multiplier      :      1.0000
Dilution       :      1.0000
Do not use Multiplier & Dilution Factor with ISTDs
  
```

Signal 1: FID1 A, Front Signal

Peak #	RetTime [min]	Type	Width [min]	Area [pA*s]	Height [pA]	Area %
1	10.064	BB	0.0441	776.17920	282.49716	0.93964
2	10.284	BB	0.0442	304.98096	110.63181	0.36921
3	10.750	BB	0.0468	58.77224	19.72907	0.07115
4	11.493	BV	0.0493	88.24924	30.95787	0.10683
5	11.604	VB	0.0475	261.63138	86.04607	0.31673
6	12.006	BV	0.0463	773.41681	262.91797	0.93629

Sample Name: LAVANDER STANDARD (BMV)

Peak #	RetTime [min]	Type	Width [min]	Area [pA*s]	Height [pA]	Area %
7	12.169	VB	0.0495	617.21875	192.06973	0.74720
8	12.433	BB	0.0583	22.50077	5.66996	0.02724
9	12.621	BV	0.0772	124.36851	22.26875	0.15056
10	12.811	VB	0.0513	16.28893	5.37865	0.01972
11	13.067	BV	0.0539	404.06052	124.27357	0.48915
12	13.206	VV	0.0573	1778.89661	502.19427	2.15352
13	13.315	VV	0.0480	2309.60205	749.02112	2.79599
14	13.420	VB	0.0454	682.83557	238.61520	0.82664
15	13.962	BV	0.0692	139.64510	30.63575	0.16905
16	14.116	VB	0.0712	159.70906	36.39724	0.19334
17	14.567	BB	0.0532	46.56768	13.17168	0.05637
18	15.005	BB	0.0554	344.14090	92.44415	0.41662
19	15.568	BV	0.1284	2.11833e4	2198.14966	25.64436
20	15.687	VV	0.0556	30.84468	8.24435	0.03734
21	15.833	VV	0.0482	25.24317	8.13080	0.03056
22	16.028	VB	0.0512	499.64664	165.41122	0.60487
23	16.202	BV	0.0650	18.41217	4.38036	0.02229
24	16.367	VB	0.0464	184.98709	62.80560	0.22394
25	16.806	BB	0.0474	950.60590	313.49994	1.15080
26	17.189	BV	0.0543	1699.33142	517.83997	2.05720
27	17.504	VB	0.0621	2083.14697	527.61591	2.52185
28	17.734	BB	0.0520	271.21234	87.89368	0.32833
29	17.973	BV	0.0524	120.69267	38.72667	0.14611
30	18.112	VV	0.0580	668.48450	185.58102	0.80926
31	18.288	VB	0.0827	162.88680	30.29360	0.19719
32	18.878	BB	0.0786	76.81284	13.46488	0.09299
33	19.226	BB	0.0641	148.71902	36.04525	0.18004
34	19.934	BB	0.1034	1.93439e4	2706.60767	23.41759
35	20.265	BB	0.0470	192.03857	63.96237	0.23248
36	20.562	BV	0.0510	293.95654	97.93742	0.35586
37	20.710	VB	0.0729	616.19366	117.99415	0.74596
38	21.045	BB	0.0555	157.77298	46.62591	0.19100
39	21.493	BV	0.1320	84.80958	10.75870	0.10267
40	21.912	VV	0.0571	245.81848	63.60332	0.29759
41	22.139	VV	0.0887	44.32507	7.52331	0.05366
42	22.479	VV	0.1137	1.29269e4	1758.97327	15.64927
43	22.665	VV	0.0574	1385.68054	390.24615	1.67750
44	22.799	VV	0.0731	48.02480	9.17251	0.05814
45	23.161	VB	0.0603	2238.77808	589.43304	2.71025
46	23.651	BV	0.0893	87.61879	13.23145	0.10607
47	23.942	VV	0.1384	279.99713	25.84238	0.33896
48	24.137	VV	0.0759	139.42680	27.16566	0.16879
49	24.282	VV	0.0671	1820.57190	451.28241	2.20398
50	24.449	VV	0.0792	307.65579	53.37719	0.37245
51	24.609	VV	0.1100	565.80524	70.25086	0.68496
52	24.823	VV	0.0876	1598.22205	293.22485	1.93480
53	24.937	VV	0.0695	276.09280	55.98965	0.33424
54	25.048	VV	0.1029	344.65527	46.25703	0.41724
55	25.166	VV	0.1013	363.44171	47.46616	0.43998
56	25.387	VV	0.1255	362.81744	37.29390	0.43922
57	25.565	VV	0.1234	400.24478	45.17390	0.48453
58	26.009	VV	0.1026	95.90587	12.34630	0.11610
59	26.188	VB	0.1039	85.28761	11.32283	0.10325
60	26.494	BV	0.0620	17.90805	4.54401	0.02168

Peak #	RetTime [min]	Type	Width [min]	Area [pA*s]	Height [pA]	Area %
61	26.628	VB	0.1429	64.94991	5.97265	0.07863
62	27.040	BB	0.0477	34.87572	12.83424	0.04222
63	28.182	BB	0.0586	34.15072	9.35762	0.04134
64	32.055	BB	0.0560	761.44391	221.97063	0.92180
65	38.329	BB	0.0726	132.16235	27.25701	0.16000
66	39.265	BB	0.0568	30.79242	8.81526	0.03728
67	39.508	BB	0.0577	188.43224	52.72022	0.22812

Totals : 8.26040e4 1.43995e4

=====
*** End of Report ***