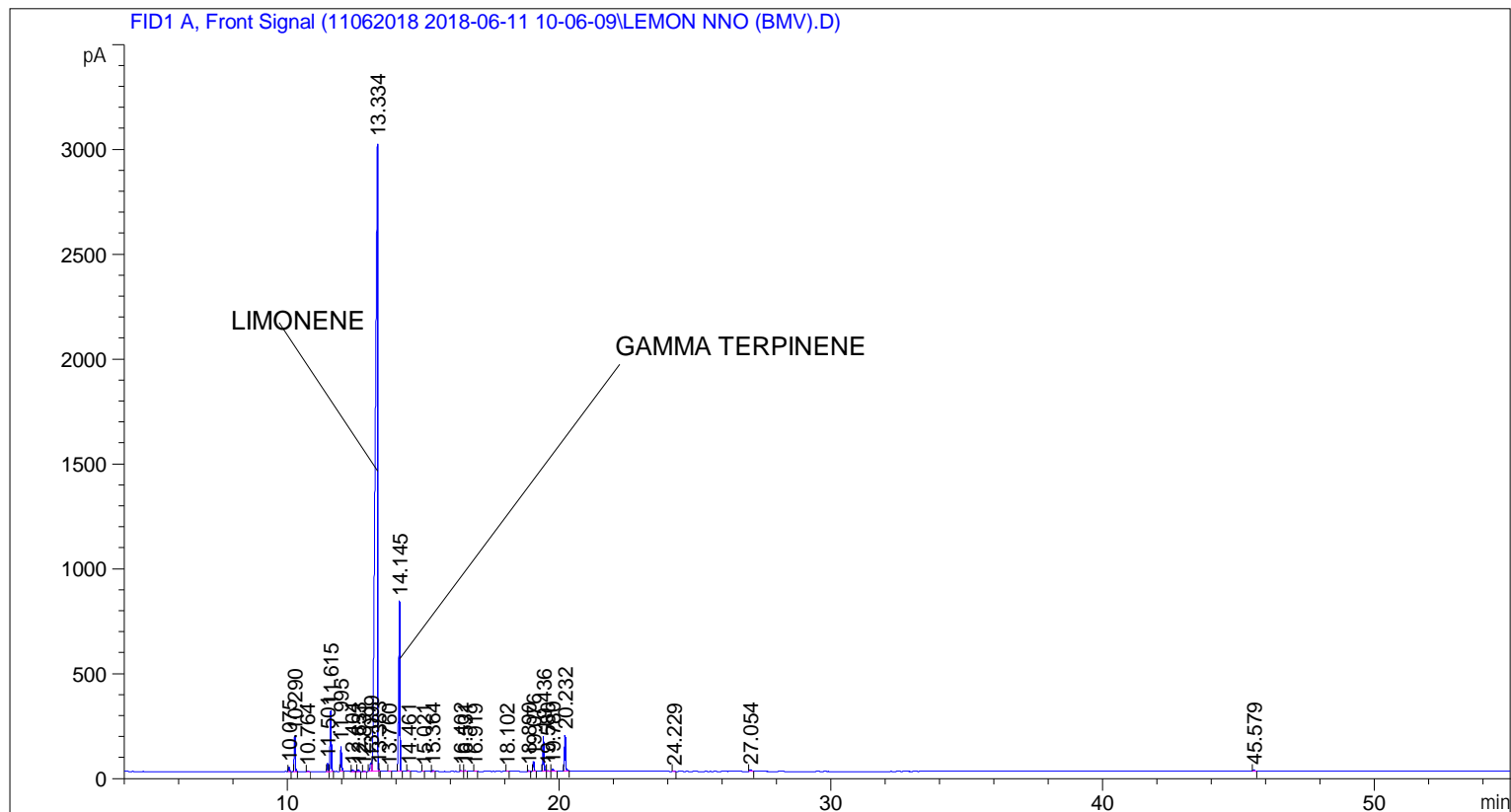


```
=====
Acq. Operator   : SYSTEM                               Seq. Line :    1
Acq. Instrument : BMV_NEW_GC_7820                     Location  : Vial 101
Injection Date  : 6/11/2018 10:20:13 AM                Inj       :    1
                                                    Inj Volume: 0.5 µl

Acq. Method     : C:\CHEM32\2\DATA\11062018 2018-06-11 10-06-09\UNIVERSAL F.M
Last changed    : 6/11/2018 10:06:16 AM by SYSTEM
Analysis Method : C:\CHEM32\2\DATA\11062018 2018-06-11 10-06-09\UNIVERSAL F.M (Sequence
Method)
Last changed    : 6/11/2018 2:04:55 PM by SYSTEM
                (modified after loading)

Additional Info : Peak(s) manually integrated
=====
```



=====  
 Area Percent Report  
 =====

```
Sorted By      :      Signal
Multiplier     :      1.0000
Dilution       :      1.0000
Do not use Multiplier & Dilution Factor with ISTDs
```

Signal 1: FID1 A, Front Signal

Peak #	RetTime [min]	Type	Width [min]	Area [pA*s]	Height [pA]	Area %
1	10.075	BB	0.0419	50.67558	19.10711	0.21408
2	10.290	BB	0.0424	447.04172	166.29587	1.88855
3	10.764	BB	0.0468	7.03406	2.29436	0.02972
4	11.501	BV	0.0427	106.31219	39.17161	0.44912
5	11.615	VB	0.0431	789.15839	287.08215	3.33384
6	11.995	BB	0.0432	328.02567	118.90132	1.38576

Peak #	RetTime [min]	Type	Width [min]	Area [pA*s]	Height [pA]	Area %
7	12.404	BB	0.0559	25.78558	6.55448	0.10893
8	12.633	BB	0.0457	22.27002	7.70161	0.09408
9	12.831	BB	0.0505	9.02828	2.88616	0.03814
10	13.099	BV	0.0632	167.17087	40.44568	0.70622
11	13.334	VV	0.0765	1.78594e4	2999.23633	75.44786
12	13.383	VB	0.0294	17.15109	8.54642	0.07246
13	13.760	BB	0.0409	5.47654	2.13408	0.02314
14	14.145	BB	0.0470	2502.91431	810.41492	10.57370
15	14.461	BB	0.0407	13.74758	5.39220	0.05808
16	15.021	BV	0.0423	5.15685	1.92022	0.02179
17	15.364	BB	0.0500	19.48775	5.98853	0.08233
18	16.402	BB	0.0499	17.51727	5.24971	0.07400
19	16.531	BB	0.0537	11.68784	3.26921	0.04938
20	16.919	BB	0.0488	7.17590	2.33752	0.03031
21	18.102	BB	0.0476	7.13460	2.27396	0.03014
22	18.890	BB	0.0445	9.92076	3.35879	0.04191
23	19.076	BB	0.0452	132.33426	45.16803	0.55905
24	19.436	BB	0.0445	480.66504	167.25702	2.03060
25	19.580	BB	0.0515	10.09286	2.90539	0.04264
26	19.780	BB	0.0539	36.28316	9.86893	0.15328
27	20.232	BB	0.0479	523.97552	170.37625	2.21356
28	24.229	BB	0.0501	7.32666	2.30574	0.03095
29	27.054	BB	0.0590	32.86943	8.52401	0.13886
30	45.579	BB	0.0550	18.34682	4.97876	0.07751

Totals : 2.36711e4 4951.94637

=====  
\*\*\* End of Report \*\*\*