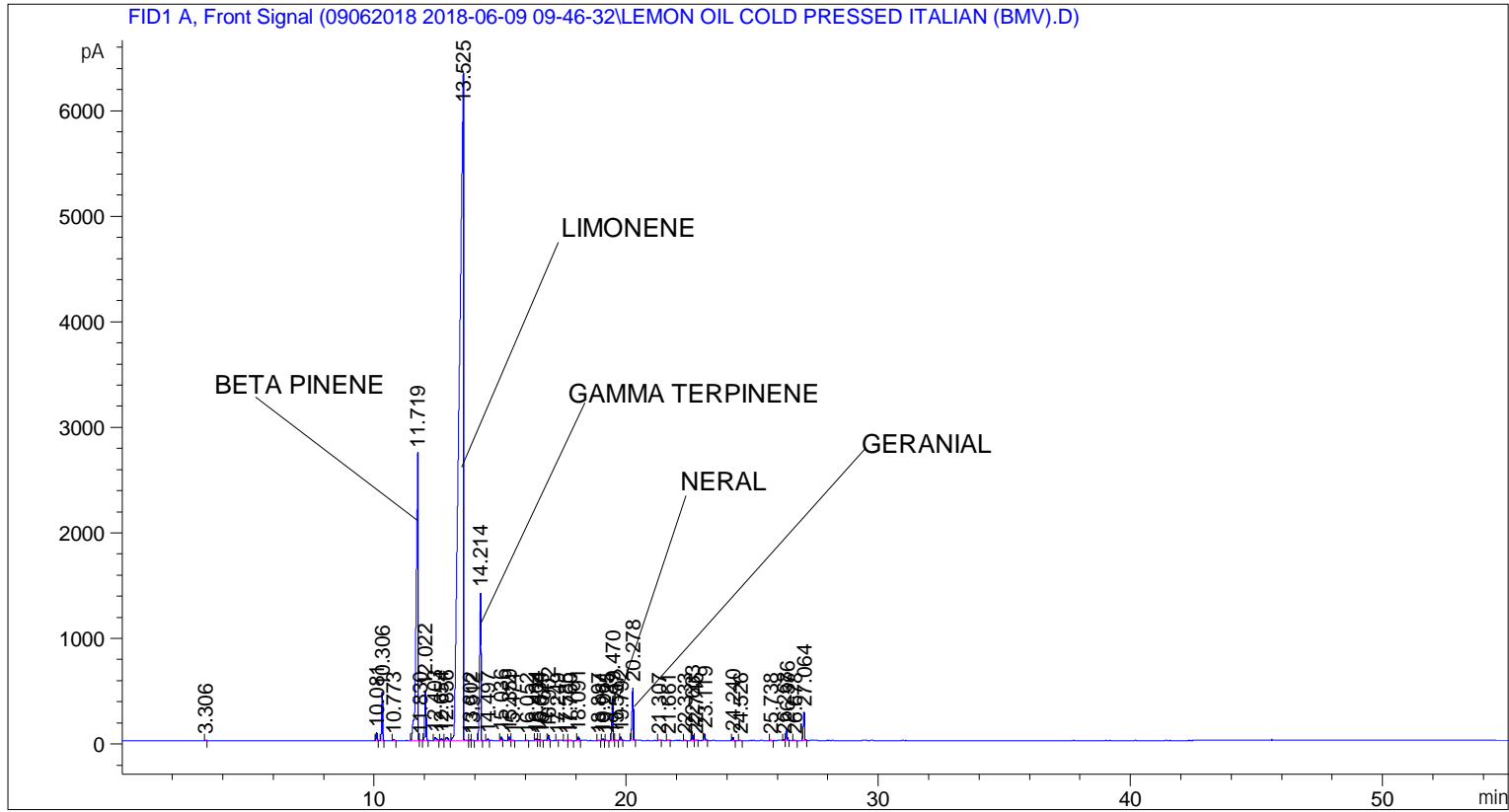


```

=====
Acq. Operator   : SYSTEM                               Seq. Line :    3
Acq. Instrument : BMV_NEW_GC_7820                     Location  : Vial 103
Injection Date  : 6/9/2018 12:11:57 PM                Inj       :    1
                                                    Inj Volume: 0.5 µl

Method          : C:\CHEM32\2\DATA\09062018 2018-06-09 09-46-32\UNIVERSAL F.M (Sequence
                Method)
Last changed    : 6/9/2018 9:46:40 AM by SYSTEM
Additional Info  : Peak(s) manually integrated
  
```



Area Percent Report

```

Sorted By      : Signal
Multiplier     : 1.0000
Dilution       : 1.0000
Do not use Multiplier & Dilution Factor with ISTDs
  
```

Signal 1: FID1 A, Front Signal

Peak #	RetTime [min]	Type	Width [min]	Area [pA*s]	Height [pA]	Area %
1	3.306	BB	0.0369	8.67478	3.27352	0.00878
2	10.081	BB	0.0437	214.10283	76.35989	0.21666
3	10.306	BB	0.0442	1294.19885	455.46625	1.30966
4	10.773	BB	0.0486	25.31729	8.05931	0.02562
5	11.719	BV	0.0661	1.37672e4	2718.37256	13.93173
6	11.830	VB	0.0491	20.64870	6.33030	0.02090
7	12.022	BB	0.0493	1477.69983	462.46698	1.49535
8	12.403	BB	0.0705	133.85561	26.25890	0.13545
9	12.654	BB	0.0617	73.16376	18.28634	0.07404

Peak #	RetTime [min]	Type	Width [min]	Area [pA*s]	Height [pA]	Area %
10	12.856	BB	0.0900	172.47537	27.95463	0.17454
11	13.525	BV	0.1379	7.08420e4	6315.98975	71.68840
12	13.802	VV	0.0427	27.17078	10.01043	0.02750
13	13.912	VB	0.0401	9.53597	3.69494	0.00965
14	14.214	BB	0.0516	5107.97266	1398.76270	5.16900
15	14.497	BB	0.0507	44.72771	13.47191	0.04526
16	15.036	BB	0.0428	89.51154	32.79496	0.09058
17	15.359	BV	0.0458	104.51711	35.08955	0.10577
18	15.474	VB	0.0508	11.67896	3.42018	0.01182
19	16.052	BB	0.0461	8.90747	3.04397	0.00901
20	16.404	BB	0.0473	47.01024	14.72121	0.04757
21	16.534	BV	0.0470	22.30456	7.23759	0.02257
22	16.629	VB	0.0517	12.77554	3.57498	0.01293
23	16.902	BB	0.0439	135.75475	48.17952	0.13738
24	17.249	BB	0.0335	2.90003	1.43812	0.00293
25	17.585	BB	0.0499	10.89912	3.18716	0.01103
26	17.760	BB	0.0680	24.11693	5.12005	0.02441
27	18.091	BB	0.0466	101.59677	34.24884	0.10281
28	18.897	BB	0.0484	14.83721	4.74928	0.01501
29	19.061	BB	0.0510	49.39904	14.76850	0.04999
30	19.225	BB	0.0506	12.41479	3.75499	0.01256
31	19.470	BV	0.0506	1283.77063	398.70065	1.29911
32	19.597	VB	0.0479	16.74146	5.43873	0.01694
33	19.792	BB	0.0451	89.98005	30.81490	0.09106
34	20.278	BB	0.0515	1739.30249	500.55640	1.76008
35	21.307	BB	0.0585	13.41893	3.22859	0.01358
36	21.661	BB	0.0599	12.68016	3.15470	0.01283
37	22.333	BB	0.0463	13.34719	4.41717	0.01351
38	22.633	BV	0.0458	218.33920	73.27084	0.22095
39	22.746	VB	0.0567	12.12914	3.16365	0.01227
40	23.119	BB	0.0470	189.59691	61.39475	0.19186
41	24.240	BB	0.0503	105.33773	33.90125	0.10660
42	24.526	BB	0.0490	16.42505	5.18486	0.01662
43	25.738	BB	0.0468	6.81686	2.35119	0.00690
44	26.268	BV	0.0464	26.03209	8.83203	0.02634
45	26.376	VB	0.0493	350.63705	112.78897	0.35483
46	26.678	BB	0.0494	11.44189	3.56752	0.01158
47	27.064	BB	0.0508	845.92975	268.52002	0.85604

Totals : 9.88193e4 1.32794e4

*** End of Report ***