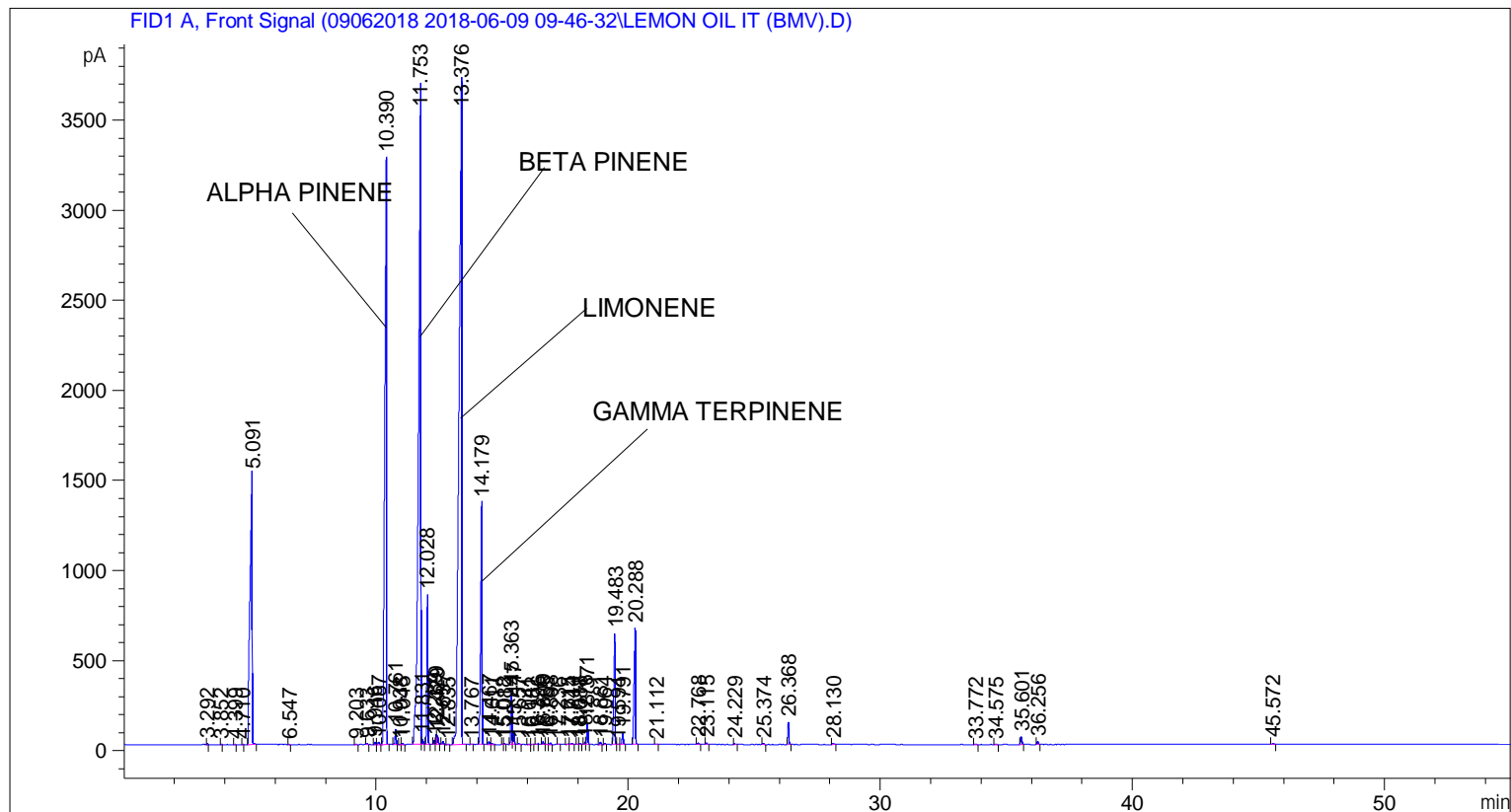


```

=====
Acq. Operator   : SYSTEM                               Seq. Line :    5
Acq. Instrument : BMV_NEW_GC_7820                     Location  : Vial 105
Injection Date  : 6/9/2018 2:26:24 PM                 Inj       :    1
                                                    Inj Volume: 0.5 µl

Method          : C:\CHEM32\2\DATA\09062018 2018-06-09 09-46-32\UNIVERSAL F.M (Sequence
                Method)
Last changed    : 6/9/2018 9:46:40 AM by SYSTEM
  
```



Area Percent Report

```

Sorted By      : Signal
Multiplier     : 1.0000
Dilution      : 1.0000
Do not use Multiplier & Dilution Factor with ISTDs
  
```

Signal 1: FID1 A, Front Signal

Peak #	RetTime [min]	Type	Width [min]	Area [pA*s]	Height [pA]	Area %
1	3.292	BB	0.0294	10.88027	5.20985	0.01216
2	3.852	BB	0.0254	5.02048	2.86895	0.00561
3	4.399	BB	0.0332	3.00290	1.44910	0.00336
4	4.710	BB	0.0248	3.36774	2.08467	0.00377
5	5.091	BB	0.0761	9127.14844	1497.13892	10.20414
6	6.547	BB	0.0334	3.74609	1.72000	0.00419
7	9.203	BB	0.0434	6.13301	2.20697	0.00686
8	9.633	BB	0.0387	9.52600	3.87397	0.01065
9	9.946	BV	0.0470	42.11118	14.03709	0.04708
10	10.087	VB	0.0558	49.00233	14.01451	0.05478

Sample Name: LEMON OIL IT (BMV)

Peak #	RetTime [min]	Type	Width [min]	Area [pA*s]	Height [pA]	Area %
11	10.390	BB	0.0621	1.56448e4	3255.94409	17.49087
12	10.761	BB	0.0438	242.82069	86.39011	0.27147
13	10.938	BV	0.0433	7.32861	2.64979	0.00819
14	11.045	VB	0.0534	18.34798	5.43394	0.02051
15	11.753	BV	0.0788	2.26360e4	3678.86255	25.30701
16	11.831	VB	0.0410	75.05556	27.38412	0.08391
17	12.028	BB	0.0455	2377.99316	829.28973	2.65859
18	12.289	BV	0.0397	57.65153	22.67514	0.06445
19	12.379	VV	0.0395	153.44812	58.67334	0.17155
20	12.429	VB	0.0427	139.14113	48.14399	0.15556
21	12.637	BB	0.0459	53.50946	18.41848	0.05982
22	12.835	BB	0.0498	7.20244	2.22172	0.00805
23	13.376	BB	0.0882	2.62167e4	3720.27271	29.31024
24	13.767	BB	0.0437	7.74804	2.76176	0.00866
25	14.179	BB	0.0508	4924.82861	1342.10437	5.50595
26	14.467	BV	0.0532	52.62120	14.89324	0.05883
27	14.611	VB	0.0533	14.86969	4.30857	0.01662
28	15.018	BV	0.0370	4.26369	1.84064	0.00477
29	15.082	VB	0.0436	13.28775	4.89981	0.01486
30	15.363	BV	0.0475	943.64154	309.78409	1.05499
31	15.447	VB	0.0419	201.32596	73.64027	0.22508
32	15.657	BB	0.0499	13.16697	4.15916	0.01472
33	16.041	BB	0.0450	6.20057	2.19163	0.00693
34	16.182	BB	0.0426	5.04282	1.86263	0.00564
35	16.396	BV	0.0580	16.33352	4.05032	0.01826
36	16.609	BB	0.0503	50.45961	14.97985	0.05641
37	16.785	BV	0.0456	10.27461	3.46133	0.01149
38	16.898	VB	0.0449	25.46597	8.75548	0.02847
39	17.236	BB	0.0394	4.99671	2.04953	0.00559
40	17.615	BV	0.0607	19.15869	4.32447	0.02142
41	17.744	VB	0.0560	24.19937	6.27875	0.02705
42	18.011	BV	0.0495	9.30791	2.89626	0.01041
43	18.088	VB	0.0461	16.91900	5.78907	0.01892
44	18.276	BV	0.0446	32.17279	11.17019	0.03597
45	18.371	VB	0.0446	349.43295	121.22897	0.39067
46	18.881	BB	0.0478	36.61845	11.94015	0.04094
47	19.064	BB	0.0502	19.99147	6.26371	0.02235
48	19.483	BV	0.0528	2253.24976	614.62604	2.51913
49	19.594	VV	0.0542	10.62529	3.08014	0.01188
50	19.791	VB	0.0473	201.57182	64.86373	0.22536
51	20.288	BB	0.0537	2524.29053	644.32416	2.82215
52	21.112	BB	0.0553	8.07735	2.17863	0.00903
53	22.768	BB	0.0615	29.24078	7.03554	0.03269
54	23.115	BB	0.0517	33.06856	9.72937	0.03697
55	24.229	BB	0.0495	16.20454	5.18471	0.01812
56	25.374	BB	0.0499	16.40703	5.18350	0.01834
57	26.368	BB	0.0483	389.93506	125.21256	0.43595
58	28.130	BB	0.0677	24.40058	5.19967	0.02728
59	33.772	BB	0.0547	10.37023	2.97197	0.01159
60	34.575	BB	0.0581	12.26637	3.10307	0.01371
61	35.601	BB	0.0518	145.52789	43.72555	0.16270
62	36.256	BB	0.0499	54.76921	16.84526	0.06123
63	45.572	BB	0.0602	23.25519	6.27950	0.02600

Sample Name: LEMON OIL IT (BMV)

Totals : 8.94455e4 1.68261e4

=====

\*\*\* End of Report \*\*\*