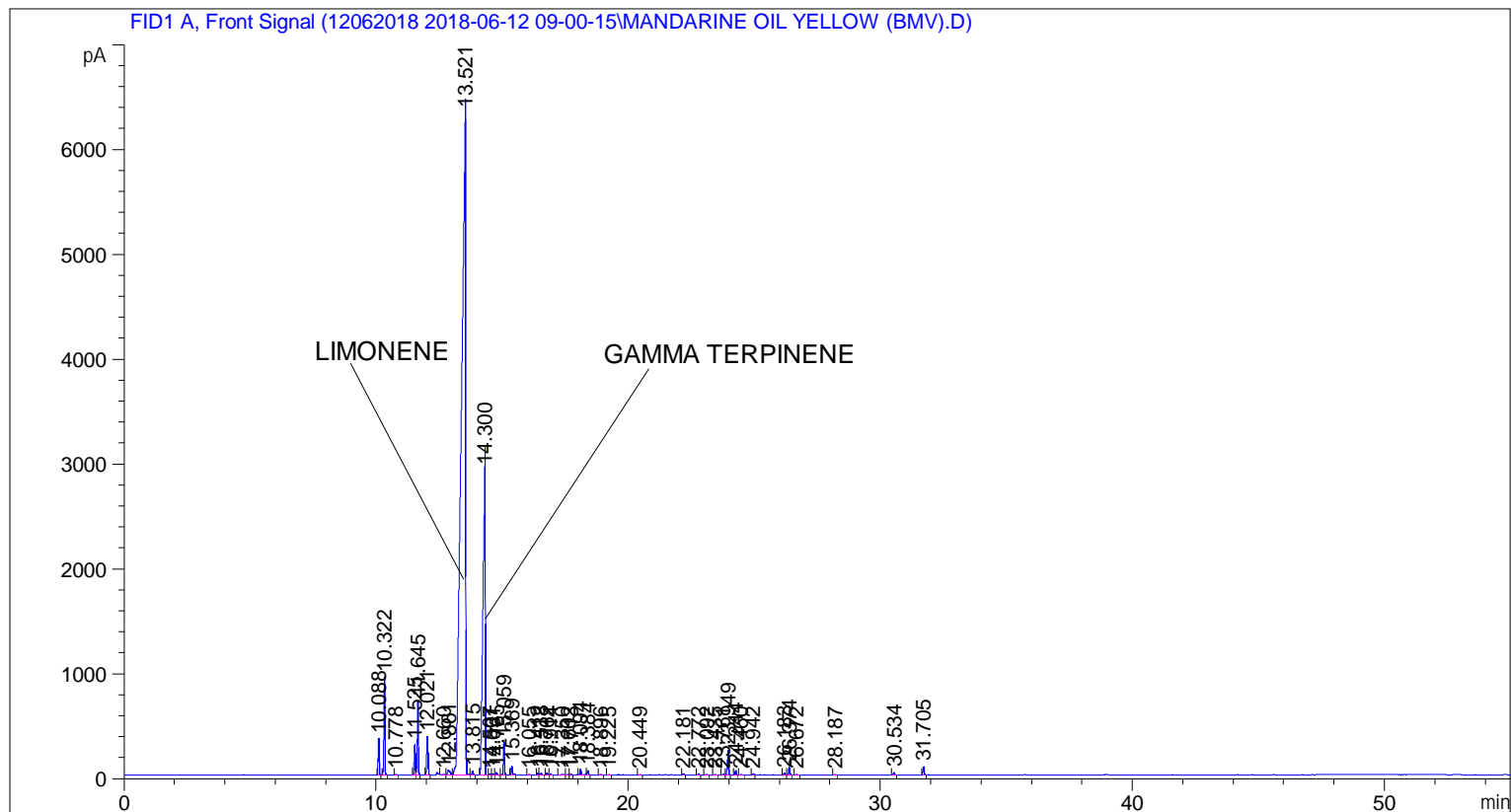


```

=====
Acq. Operator   : SYSTEM                               Seq. Line :    2
Acq. Instrument : BMV_NEW_GC_7820                     Location  : Vial 102
Injection Date  : 6/12/2018 10:20:44 AM                Inj       :    1
                                                    Inj Volume: 0.5 µl

Acq. Method     : C:\CHEM32\2\DATA\12062018 2018-06-12 09-00-15\UNIVERSAL F.M
Last changed    : 6/12/2018 9:00:23 AM by SYSTEM
Analysis Method : C:\CHEM32\2\DATA\12062018 2018-06-12 09-00-15\UNIVERSAL F.M (Sequence
Method)
Last changed    : 6/19/2018 11:02:33 AM by SYSTEM
                  (modified after loading)
  
```



=====  
 Area Percent Report  
 =====

```

Sorted By      :      Signal
Multiplier     :      1.0000
Dilution       :      1.0000
Do not use Multiplier & Dilution Factor with ISTDs
  
```

Signal 1: FID1 A, Front Signal

Peak #	RetTime [min]	Type	Width [min]	Area [pA*s]	Height [pA]	Area %
1	10.088	BB	0.0457	984.73798	341.04065	0.92467
2	10.322	BB	0.0497	2679.16577	927.12701	2.51575
3	10.778	BB	0.0482	19.79083	6.37099	0.01858
4	11.525	BV	0.0558	985.37549	288.52054	0.92527
5	11.645	VB	0.0476	2113.98584	693.26862	1.98504
6	12.021	BB	0.0585	1310.39966	359.45187	1.23047
7	12.660	BV	0.0455	12.31382	5.64067	0.01156

Peak #	RetTime [min]	Type	Width [min]	Area [pA*s]	Height [pA]	Area %
8	12.861	VV	0.1165	319.03284	46.21523	0.29957
9	13.521	VV	0.1537	7.48809e4	6342.77637	70.31345
10	13.815	VB	0.0576	132.34119	37.11315	0.12427
11	14.300	BV	0.0934	1.92679e4	2902.91846	18.09265
12	14.507	VV	0.0603	35.82797	9.44350	0.03364
13	14.631	VV	0.0496	43.02816	13.35606	0.04040
14	14.765	VV	0.0473	74.17759	24.49977	0.06965
15	15.059	VB	0.0461	900.27118	308.39374	0.84536
16	15.369	BB	0.0507	284.03995	85.68881	0.26671
17	16.055	BB	0.0537	18.41583	5.70576	0.01729
18	16.412	BV	0.0496	49.24570	15.29003	0.04624
19	16.538	VB	0.0596	64.54399	15.81157	0.06061
20	16.762	BB	0.0494	53.16131	16.59721	0.04992
21	16.914	BB	0.0462	27.56006	9.39012	0.02588
22	17.350	BV	0.0959	58.59149	8.14327	0.05502
23	17.602	VV	0.0722	31.46598	7.03917	0.02955
24	17.713	VB	0.0502	29.31749	8.94329	0.02753
25	18.094	BB	0.0537	167.14763	51.69168	0.15695
26	18.384	BB	0.0533	132.10513	41.27061	0.12405
27	18.896	BB	0.0601	26.92611	7.11963	0.02528
28	19.225	BB	0.0546	13.80712	4.17232	0.01296
29	20.449	BB	0.0611	15.63488	4.04184	0.01468
30	22.181	BB	0.0488	41.82941	13.24815	0.03928
31	22.772	BB	0.0684	34.32140	7.64123	0.03223
32	23.092	BB	0.0580	24.04058	6.68400	0.02257
33	23.435	BB	0.0611	20.22482	5.22663	0.01899
34	23.761	BV	0.0551	34.41118	10.27637	0.03231
35	23.949	VB	0.0536	748.11206	232.05367	0.70248
36	24.244	BB	0.0496	137.35841	42.60543	0.12898
37	24.460	BB	0.0506	19.44949	5.87494	0.01826
38	24.942	BB	0.0498	33.05961	10.20681	0.03104
39	26.183	BV	0.0537	53.62431	16.60786	0.05035
40	26.374	VB	0.0528	240.22330	76.16381	0.22557
41	26.672	BB	0.0660	28.70050	7.27395	0.02695
42	28.187	BB	0.0618	20.50438	5.21790	0.01925
43	30.534	BB	0.0544	76.54696	23.27686	0.07188
44	31.705	BB	0.0556	252.20105	74.38871	0.23682

Totals : 1.06496e5 1.31238e4

=====  
\*\*\* End of Report \*\*\*