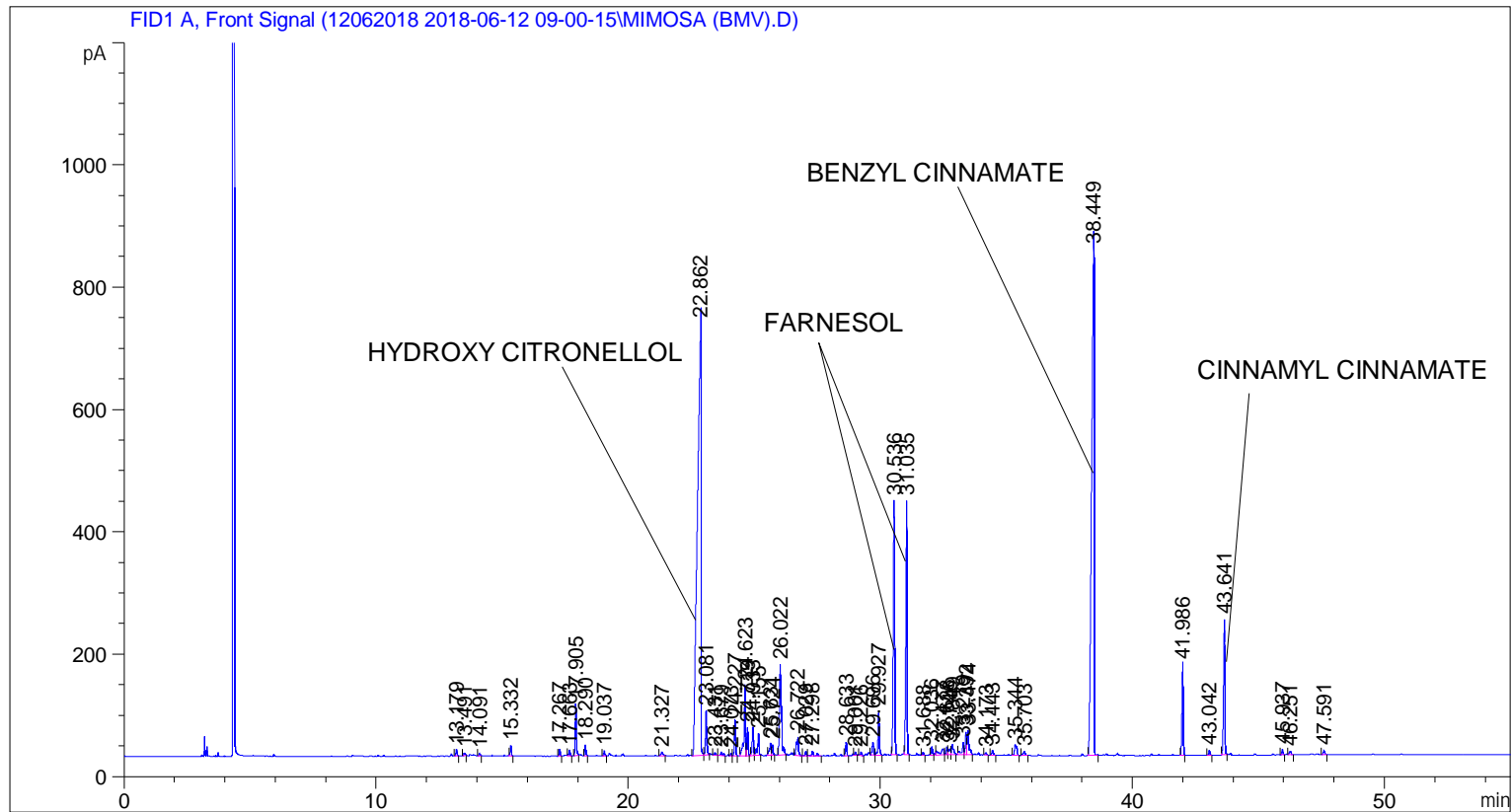


```

=====
Acq. Operator   : SYSTEM                               Seq. Line :    4
Acq. Instrument : BMV_NEW_GC_7820                     Location  : Vial 104
Injection Date  : 6/12/2018 12:35:22 PM                Inj       :    1
                                                    Inj Volume: 0.5 µl

Acq. Method     : C:\CHEM32\2\DATA\12062018 2018-06-12 09-00-15\UNIVERSAL F.M
Last changed    : 6/12/2018 9:00:23 AM by SYSTEM
Analysis Method : C:\CHEM32\2\DATA\12062018 2018-06-12 09-00-15\UNIVERSAL F.M (Sequence
Method)
Last changed    : 6/19/2018 4:24:19 PM by SYSTEM
                  (modified after loading)
Additional Info  : Peak(s) manually integrated
  
```



=====  
 Area Percent Report  
 =====

```

Sorted By      :      Signal
Multiplier     :      1.0000
Dilution      :      1.0000
Do not use Multiplier & Dilution Factor with ISTDs
  
```

Signal 1: FID1 A, Front Signal

Peak #	RetTime [min]	Type	Width [min]	Area [pA*s]	Height [pA]	Area %
1	13.179	BB	0.0534	34.89292	10.32279	0.15798
2	13.491	BB	0.0550	17.10300	4.63976	0.07744
3	14.091	BB	0.0521	14.74916	4.28811	0.06678
4	15.332	BB	0.0474	50.51223	16.64544	0.22870
5	17.267	BB	0.0465	32.79638	11.09216	0.14849
6	17.663	BB	0.0510	28.68097	9.04945	0.12986

Peak #	RetTime [min]	Type	Width [min]	Area [pA*s]	Height [pA]	Area %
7	17.905	BB	0.0510	269.07486	84.84978	1.21828
8	18.290	BB	0.0508	53.99510	17.13813	0.24447
9	19.037	BB	0.0524	28.15912	8.55318	0.12749
10	21.327	BB	0.0878	39.03165	6.34126	0.17672
11	22.862	BV	0.1306	7179.46680	706.12067	32.50611
12	23.081	VB	0.0552	254.66833	72.06284	1.15305
13	23.431	BB	0.0582	13.75388	3.99030	0.06227
14	23.679	BB	0.0765	28.86369	5.38828	0.13068
15	24.073	BV	0.0464	11.40277	3.86490	0.05163
16	24.227	VB	0.0507	182.30255	57.98639	0.82540
17	24.623	BV	0.0606	461.58978	115.50999	2.08992
18	24.719	VB	0.0517	147.14330	45.54865	0.66621
19	24.933	BV	0.0554	163.84625	46.19795	0.74184
20	25.155	VB	0.0646	154.81989	35.67547	0.70097
21	25.631	BV	0.0647	86.70501	19.97045	0.39257
22	25.724	VB	0.0500	54.05464	17.49637	0.24474
23	26.022	BB	0.0787	794.74310	147.77417	3.59832
24	26.722	BB	0.0768	166.18050	29.92270	0.75241
25	27.029	BV	0.0503	22.58343	7.24934	0.10225
26	27.298	VB	0.0787	46.12100	8.32073	0.20882
27	28.633	BB	0.0514	69.88728	21.80981	0.31643
28	29.001	BB	0.0600	20.84011	5.28225	0.09436
29	29.226	BB	0.0561	19.56281	5.69449	0.08857
30	29.696	BV	0.0684	85.26736	20.55505	0.38606
31	29.927	VB	0.0584	264.25723	72.68464	1.19646
32	30.536	BB	0.0664	1722.43811	415.29871	7.79860
33	31.035	BB	0.0575	1478.24500	415.56540	6.69298
34	31.688	BB	0.0504	15.62364	5.00608	0.07074
35	32.036	BB	0.0568	50.13018	13.65261	0.22697
36	32.477	BV	0.1530	103.51747	9.65919	0.46869
37	32.628	VV	0.0611	50.66796	12.54326	0.22941
38	32.746	VV	0.0806	50.59676	9.42892	0.22908
39	32.849	VB	0.0712	87.71300	17.29593	0.39713
40	33.279	BV	0.0799	109.16494	19.34027	0.49426
41	33.392	VV	0.0522	127.48430	36.99528	0.57720
42	33.474	VB	0.0667	179.86562	39.78887	0.81437
43	34.173	BB	0.0560	14.38143	3.99583	0.06511
44	34.443	BB	0.0633	33.81736	8.34381	0.15311
45	35.344	BB	0.0830	104.21638	17.62928	0.47186
46	35.703	BB	0.0864	38.77647	6.42993	0.17557
47	38.449	BB	0.0976	5644.57324	827.54877	25.55665
48	41.986	BB	0.0557	527.54797	147.61729	2.38855
49	43.042	BB	0.0597	29.47744	7.86615	0.13346
50	43.641	BB	0.0601	835.35437	221.08308	3.78219
51	45.937	BB	0.0538	29.36005	8.60741	0.13293
52	46.251	BB	0.0770	29.47261	6.03539	0.13344
53	47.591	BB	0.0656	27.03369	6.62050	0.12240

Totals : 2.20865e4 3878.37743

\*\*\* End of Report \*\*\*