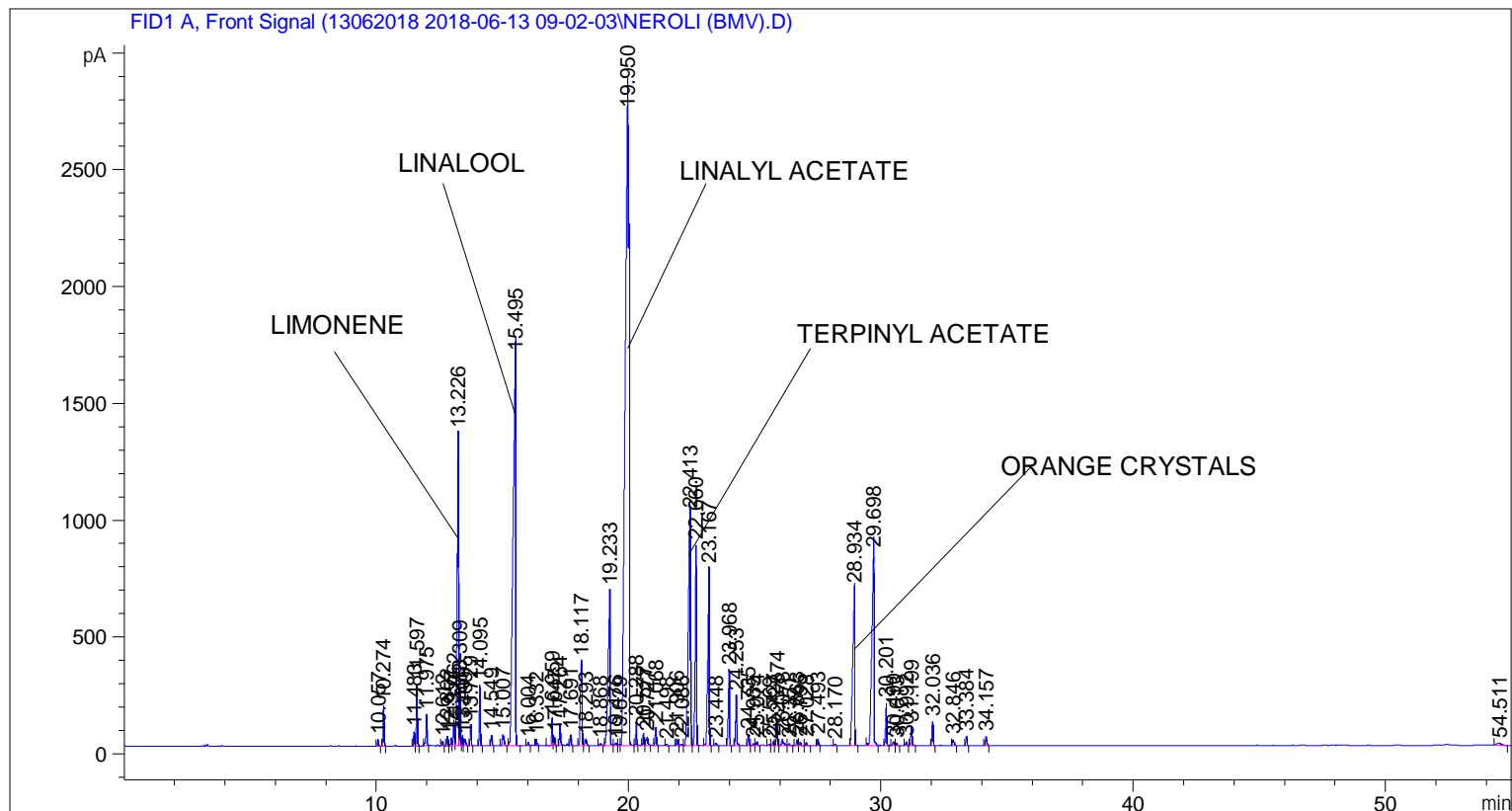


```
=====
Acq. Operator   : SYSTEM                               Seq. Line :    3
Acq. Instrument : BMV_NEW_GC_7820                     Location  : Vial 103
Injection Date  : 6/13/2018 11:31:19 AM                Inj       :    1
                                                    Inj Volume: 0.5 µl

Acq. Method     : C:\CHEM32\2\DATA\13062018 2018-06-13 09-02-03\UNIVERSAL F.M
Last changed    : 6/13/2018 9:02:09 AM by SYSTEM
Analysis Method : C:\CHEM32\2\DATA\13062018 2018-06-13 09-02-03\UNIVERSAL F.M (Sequence
Method)
Last changed    : 6/19/2018 5:15:01 PM by SYSTEM
                  (modified after loading)
=====
```



=====
 Area Percent Report
 =====

```
Sorted By       : Signal
Multiplier      : 1.0000
Dilution        : 1.0000
Do not use Multiplier & Dilution Factor with ISTDs
```

Signal 1: FID1 A, Front Signal

Peak #	RetTime [min]	Type	Width [min]	Area [pA*s]	Height [pA]	Area %
1	10.057	BB	0.0447	71.93090	27.30305	0.08279
2	10.274	BB	0.0433	457.12701	170.44867	0.52614
3	11.483	BV	0.0456	167.65547	61.80073	0.19296
4	11.597	VB	0.0458	705.95605	258.75424	0.81253
5	11.975	BB	0.0467	398.61386	134.03778	0.45879
6	12.612	BB	0.0443	54.40605	19.64586	0.06262
7	12.802	BV	0.0470	115.78550	40.87923	0.13326

Sample Name: NEROLI (BMV)

Peak #	RetTime [min]	Type	Width [min]	Area [pA*s]	Height [pA]	Area %
8	12.957	VV	0.0478	97.89801	33.77309	0.11268
9	13.062	VV	0.0543	382.76343	110.88955	0.44055
10	13.226	VV	0.0581	5044.94775	1335.26477	5.80653
11	13.309	VV	0.0361	593.87738	246.16756	0.68353
12	13.409	VV	0.0433	125.48771	46.72402	0.14443
13	13.499	VB	0.0615	109.53986	26.89715	0.12608
14	13.729	BB	0.0460	253.81903	92.40087	0.29214
15	14.095	BB	0.0439	705.96912	258.26944	0.81254
16	14.549	BB	0.0504	135.57718	43.41144	0.15604
17	15.007	BB	0.0836	238.06155	46.56710	0.27400
18	15.495	BB	0.1036	1.25301e4	1668.53113	14.42162
19	16.004	BB	0.0499	46.58991	15.13028	0.05362
20	16.332	BB	0.0462	77.27801	26.34100	0.08894
21	16.959	BV	0.0455	335.90247	116.86497	0.38661
22	17.047	VB	0.0493	114.14702	37.74696	0.13138
23	17.264	BB	0.0504	291.75909	93.61772	0.33580
24	17.691	BB	0.0492	140.64035	46.54934	0.16187
25	18.117	BV	0.0747	1631.63049	361.34372	1.87794
26	18.293	VB	0.0787	134.89049	26.83093	0.15525
27	18.868	BB	0.0714	47.52459	10.00207	0.05470
28	19.233	BV	0.0787	3685.77295	664.70093	4.24218
29	19.476	VV	0.0798	61.11627	12.32749	0.07034
30	19.629	VV	0.0591	17.98491	4.87088	0.02070
31	19.950	VV	0.1416	3.05501e4	2838.51440	35.16195
32	20.288	VB	0.0427	263.50433	100.26960	0.30328
33	20.577	BV	0.0455	139.90500	51.79093	0.16103
34	20.727	VB	0.0701	185.51405	37.27949	0.21352
35	21.068	BB	0.0534	261.36307	77.40605	0.30082
36	21.498	BB	0.0431	14.96657	5.61060	0.01723
37	21.906	BB	0.0506	96.03126	30.58823	0.11053
38	22.086	BV	0.0688	32.24415	7.39908	0.03711
39	22.413	VV	0.0871	6221.17725	992.86603	7.16033
40	22.660	VB	0.0600	3237.85205	858.90741	3.72664
41	23.167	BB	0.0619	3111.50195	757.07275	3.58122
42	23.448	BB	0.0679	47.60425	11.13048	0.05479
43	23.968	BB	0.0561	1106.86487	321.71063	1.27396
44	24.253	BB	0.0521	692.56519	212.17599	0.79712
45	24.735	BB	0.0517	156.03815	48.23546	0.17959
46	24.935	BV	0.0628	35.54944	8.86342	0.04092
47	25.074	VB	0.0533	56.05286	16.62394	0.06451
48	25.569	BV	0.0530	20.14610	6.01896	0.02319
49	25.727	VV	0.0564	65.69946	18.06897	0.07562
50	25.874	VV	0.0536	373.91797	116.07293	0.43036
51	26.078	VB	0.0856	171.47537	28.72555	0.19736
52	26.351	BB	0.0751	42.33907	8.36145	0.04873
53	26.663	BV	0.0530	86.33061	25.82596	0.09936
54	26.795	VB	0.0557	57.30299	16.04437	0.06595
55	27.028	BB	0.0510	41.54800	13.10616	0.04782
56	27.493	BB	0.0480	84.49549	27.41016	0.09725
57	28.170	BB	0.0544	24.35165	7.03648	0.02803
58	28.934	BB	0.0851	3856.71729	670.73560	4.43893
59	29.698	BB	0.0857	5189.78320	821.90717	5.97323
60	30.201	BB	0.0508	571.26636	181.25374	0.65750
61	30.490	BV	0.0686	74.61790	17.90699	0.08588

Sample Name: NEROLI (BMV)

Peak #	RetTime [min]	Type	Width [min]	Area [pA*s]	Height [pA]	Area %
62	30.613	VB	0.0504	32.68832	10.47556	0.03762
63	30.992	BB	0.0584	62.74695	16.47416	0.07222
64	31.199	BB	0.0547	277.81937	79.70129	0.31976
65	32.036	BB	0.0523	337.21378	102.66775	0.38812
66	32.846	BB	0.0658	115.84261	25.10277	0.13333
67	33.384	BB	0.0512	127.59616	40.04395	0.14686
68	34.157	BB	0.0581	147.23465	38.93233	0.16946
69	54.511	BB	0.2064	139.27090	10.13065	0.16030

Totals : 8.68840e4 1.46965e4

=====
*** End of Report ***