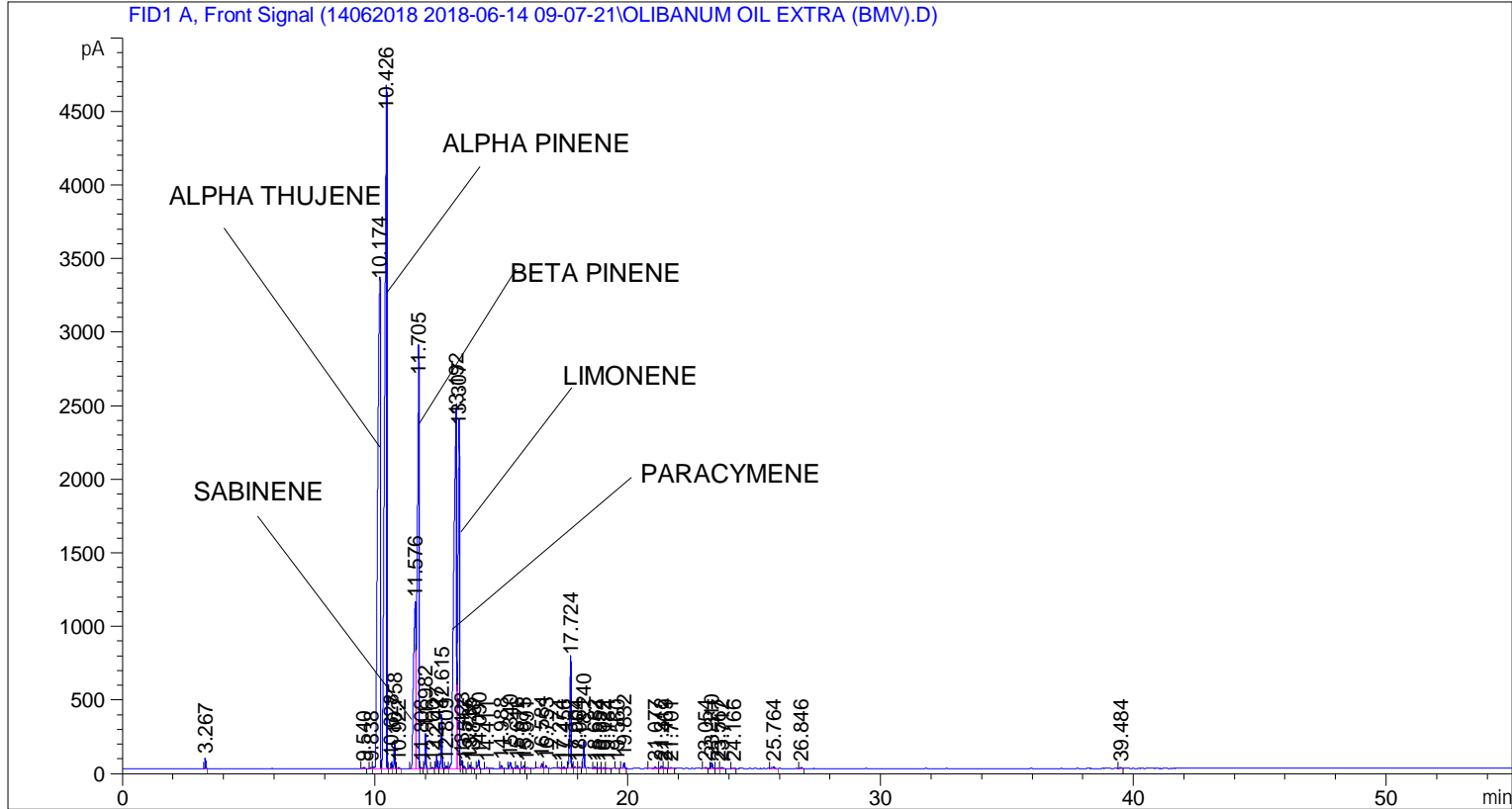


```

=====
Acq. Operator   : SYSTEM                               Seq. Line :    3
Acq. Instrument : BMV_NEW_GC_7820                     Location  : Vial 103
Injection Date  : 6/14/2018 11:36:57 AM              Inj       :    1
                                                    Inj Volume: 0.5 µl

Acq. Method     : C:\CHEM32\2\DATA\14062018 2018-06-14 09-07-21\UNIVERSAL F.M
Last changed    : 6/14/2018 9:07:29 AM by SYSTEM
Analysis Method : C:\CHEM32\2\DATA\14062018 2018-06-14 09-07-21\UNIVERSAL F.M (Sequence
Method)
Last changed    : 6/23/2018 12:30:40 PM by SYSTEM
                  (modified after loading)
  
```



=====  
 Area Percent Report  
 =====

```

Sorted By       :      Signal
Multiplier      :      1.0000
Dilution        :      1.0000
Do not use Multiplier & Dilution Factor with ISTDs
  
```

Signal 1: FID1 A, Front Signal

Peak #	RetTime [min]	Type	Width [min]	Area [pA*s]	Height [pA]	Area %
1	3.267	BB	0.0267	90.07681	62.97860	0.08490
2	9.540	BB	0.0679	32.14890	7.51593	0.03030
3	9.838	BV	0.0618	35.85242	9.12434	0.03379
4	10.174	VV	0.1275	2.41120e4	3289.27466	22.72533
5	10.426	VV	0.0816	2.57294e4	4439.10303	24.24969
6	10.628	VV	0.0425	106.87895	40.90565	0.10073
7	10.758	VB	0.0430	514.69531	193.39471	0.48509

Peak #	RetTime [min]	Type	Width [min]	Area [pA*s]	Height [pA]	Area %
8	10.922	BB	0.0455	15.50470	5.74269	0.01461
9	11.576	BV	0.1133	7436.58594	1122.72729	7.00890
10	11.705	VV	0.0698	1.26017e4	2634.06982	11.87699
11	11.808	VB	0.0446	25.44110	8.56844	0.02398
12	11.982	BB	0.0452	638.35791	239.02214	0.60165
13	12.260	BB	0.0460	26.68273	9.15753	0.02515
14	12.427	BB	0.0460	278.42642	95.61504	0.26241
15	12.615	BB	0.0466	1023.67487	366.90210	0.96480
16	12.809	BV	0.0545	57.76922	16.65106	0.05445
17	13.192	VV	0.1047	1.87356e4	2359.01563	17.65806
18	13.307	VV	0.0666	9158.90234	2293.02222	8.63216
19	13.423	VV	0.0455	159.36967	55.54617	0.15020
20	13.517	VB	0.0404	36.87824	14.15656	0.03476
21	13.735	BV	0.0433	67.06010	25.01791	0.06320
22	13.848	VB	0.0456	25.42168	8.81672	0.02396
23	14.090	BB	0.0531	199.27066	56.53081	0.18781
24	14.411	BB	0.0607	35.86956	8.59083	0.03381
25	14.988	BB	0.0504	65.35520	19.85093	0.06160
26	15.340	BB	0.0654	175.06729	43.08180	0.16500
27	15.616	BB	0.0522	66.46597	20.31809	0.06264
28	15.875	BV	0.0557	75.00626	20.98628	0.07069
29	15.991	VB	0.0834	44.13340	7.87517	0.04160
30	16.584	BV	0.0638	143.44792	33.62904	0.13520
31	16.753	VB	0.0536	57.92085	17.06478	0.05459
32	17.274	BB	0.0509	21.45769	6.44101	0.02022
33	17.456	BB	0.0609	44.40477	11.05771	0.04185
34	17.724	BB	0.0609	2948.67944	733.98981	2.77910
35	17.904	BB	0.0576	31.18607	7.97362	0.02939
36	18.064	BB	0.0419	24.82676	9.67390	0.02340
37	18.240	BB	0.0459	520.99139	179.11809	0.49103
38	18.682	BB	0.0509	39.12065	12.36420	0.03687
39	18.854	BV	0.0465	18.37804	6.20661	0.01732
40	19.022	VV	0.0522	18.78979	5.74349	0.01771
41	19.184	VB	0.0316	7.35908	4.37191	0.00694
42	19.560	BB	0.0428	10.61074	4.29384	0.01000
43	19.832	BB	0.0505	130.29062	39.46584	0.12280
44	21.077	BB	0.0669	48.19109	10.62470	0.04542
45	21.312	BV	0.0555	49.71541	13.33688	0.04686
46	21.469	VB	0.0745	26.91101	5.19207	0.02536
47	21.701	BB	0.0779	29.97711	5.14769	0.02825
48	23.054	BB	0.0666	36.57366	8.11183	0.03447
49	23.310	BB	0.0531	139.12286	41.46087	0.13112
50	23.567	BV	0.0619	19.45933	4.74051	0.01834
51	23.712	VB	0.0648	34.74743	8.65349	0.03275
52	24.166	BB	0.0655	20.82994	4.90614	0.01963
53	25.764	BB	0.0820	59.56962	9.92533	0.05614
54	26.846	BB	0.0544	30.22371	9.19123	0.02849
55	39.484	BB	0.0577	19.62874	5.49435	0.01850

Totals : 1.06102e5 1.86717e4

\*\*\* End of Report \*\*\*