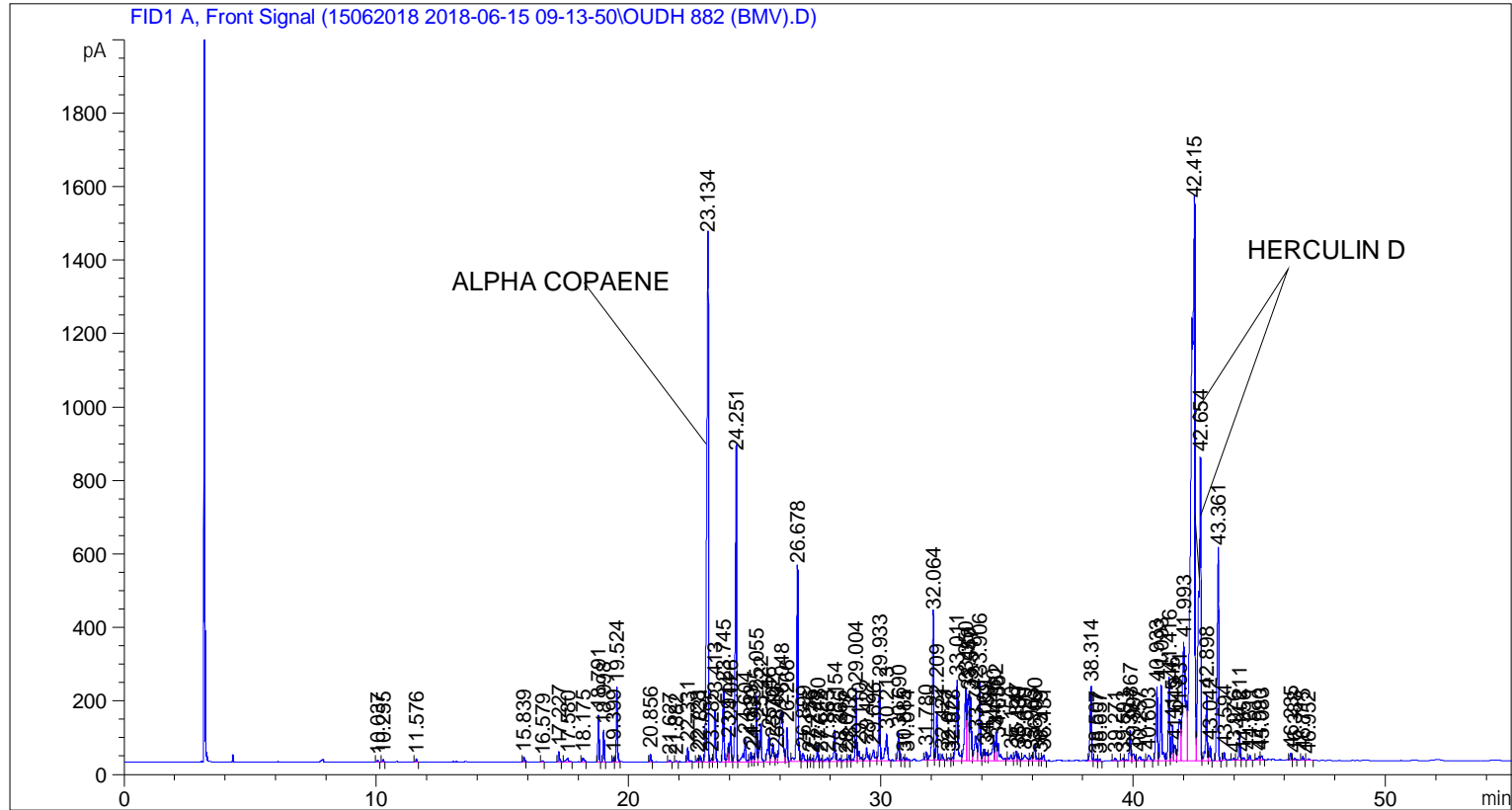


```

=====
Acq. Operator   : SYSTEM                               Seq. Line :    4
Acq. Instrument : BMV_NEW_GC_7820                     Location  : Vial 104
Injection Date  : 6/15/2018 12:53:36 PM                Inj       :    1
                                                    Inj Volume: 0.5 µl

Acq. Method     : C:\CHEM32\2\DATA\15062018 2018-06-15 09-13-50\UNIVERSAL F.M
Last changed    : 6/15/2018 9:13:56 AM by SYSTEM
Analysis Method : C:\CHEM32\2\DATA\15062018 2018-06-15 09-13-50\UNIVERSAL F.M (Sequence
Method)
Last changed    : 6/27/2018 1:54:14 PM by SYSTEM
                  (modified after loading)
Additional Info  : Peak(s) manually integrated
  
```



=====  
 Area Percent Report  
 =====

```

Sorted By      :      Signal
Multiplier     :      1.0000
Dilution       :      1.0000
Do not use Multiplier & Dilution Factor with ISTDs
  
```

Signal 1: FID1 A, Front Signal

Peak #	RetTime [min]	Type	Width [min]	Area [pA*s]	Height [pA]	Area %
1	10.037	BB	0.0459	15.89149	5.80305	0.02406
2	10.255	BB	0.0466	22.51355	8.04858	0.03409
3	11.576	BB	0.0468	24.81600	8.81969	0.03757
4	15.839	BB	0.0578	54.43541	14.51515	0.08242
5	16.579	BB	0.0470	12.26692	4.09135	0.01857
6	17.227	BB	0.0486	88.03597	28.10016	0.13329

Sample Name: OUDH 882 (BMV)

Peak #	RetTime [min]	Type	Width [min]	Area [pA*s]	Height [pA]	Area %
7	17.580	BB	0.1001	66.06908	8.95727	0.10003
8	18.175	BB	0.0667	56.35144	12.02230	0.08532
9	18.791	BB	0.0489	380.35040	127.26266	0.57585
10	18.998	BB	0.0483	258.19019	87.80753	0.39090
11	19.399	BV	0.0474	40.09336	13.99218	0.06070
12	19.524	VB	0.0516	647.38501	200.86731	0.98014
13	20.856	BB	0.0504	67.02250	21.49569	0.10147
14	21.627	BB	0.0522	18.42766	5.62183	0.02790
15	21.882	BB	0.0462	10.95706	3.97596	0.01659
16	22.331	BB	0.0565	143.33696	39.35723	0.21701
17	22.728	BV	0.0564	38.84173	11.22066	0.05881
18	22.831	VB	0.0556	62.62335	17.56738	0.09481
19	23.134	BV	0.0682	6628.65967	1427.39905	10.03579
20	23.285	VV	0.0584	42.86204	11.25902	0.06489
21	23.413	VB	0.0586	519.99982	142.45558	0.78728
22	23.745	BB	0.0522	665.75195	203.46265	1.00795
23	23.944	BV	0.0538	181.62746	50.66222	0.27498
24	24.026	VV	0.0524	328.03909	94.74734	0.49665
25	24.251	VV	0.0590	3206.39087	831.71326	4.85447
26	24.604	VB	0.0841	366.51456	60.99934	0.55490
27	24.833	BV	0.0578	93.42036	24.86767	0.14144
28	24.939	VV	0.0610	62.09779	15.40388	0.09402
29	25.055	VV	0.0525	590.20715	178.64783	0.89357
30	25.222	VB	0.0697	480.75873	104.51684	0.72787
31	25.546	BV	0.0713	363.50864	73.97241	0.55035
32	25.702	VV	0.0742	258.49921	50.10033	0.39137
33	25.849	VV	0.0585	87.11673	21.83559	0.13189
34	26.048	VV	0.1455	1253.91577	138.65485	1.89843
35	26.266	VB	0.0528	321.90811	91.99765	0.48737
36	26.678	BV	0.0616	2148.70093	526.46875	3.25313
37	26.899	VB	0.0902	124.21837	22.57091	0.18807
38	27.156	BV	0.0529	40.12986	12.03990	0.06076
39	27.275	VV	0.0555	35.49514	9.97810	0.05374
40	27.480	VV	0.0581	171.75763	45.45364	0.26004
41	27.622	VV	0.0561	29.57741	8.19214	0.04478
42	27.863	VV	0.0986	66.06908	9.81203	0.10003
43	28.154	VB	0.0629	358.71207	85.51410	0.54309
44	28.366	BV	0.0685	35.90956	7.98073	0.05437
45	28.617	VV	0.0958	48.44643	6.74742	0.07335
46	28.735	VV	0.0635	69.78168	17.13877	0.10565
47	29.004	VV	0.0590	762.97565	197.79953	1.15514
48	29.110	VV	0.0692	144.31581	28.46052	0.21849
49	29.422	VV	0.0802	204.25812	36.00123	0.30925
50	29.696	VV	0.0998	209.60374	29.91220	0.31734
51	29.933	VV	0.0568	745.55261	213.26772	1.12877
52	30.213	VB	0.0847	441.51633	72.85686	0.66846
53	30.690	BB	0.0568	276.19254	75.21800	0.41816
54	30.885	BV	0.0722	43.21220	9.66691	0.06542
55	31.014	VB	0.0741	38.54208	7.73546	0.05835
56	31.780	BV	0.0547	82.55846	23.66873	0.12499
57	32.064	VV	0.0628	1655.63879	395.91782	2.50664
58	32.209	VB	0.0542	453.69934	131.61670	0.68690
59	32.421	BB	0.0678	72.29791	16.28687	0.10946
60	32.677	BV	0.0755	39.43938	7.73515	0.05971

Sample Name: OUDH 882 (BMV)

Peak #	RetTime [min]	Type	Width [min]	Area [pA*s]	Height [pA]	Area %
61	32.828	VV	0.0533	35.02855	9.88485	0.05303
62	33.011	VV	0.0730	1092.85107	216.23982	1.65458
63	33.350	VV	0.0794	1030.28210	195.75586	1.55985
64	33.450	VV	0.0846	990.08435	178.93817	1.49899
65	33.547	VV	0.0574	678.08057	174.29205	1.02661
66	33.742	VV	0.1002	467.34186	67.94603	0.70756
67	33.906	VV	0.0579	778.96552	217.12111	1.17935
68	34.069	VV	0.0674	143.55380	32.61499	0.21734
69	34.189	VV	0.0762	125.36523	23.50537	0.18980
70	34.460	VV	0.0898	449.77942	67.48304	0.68097
71	34.552	VV	0.0537	282.85922	79.15617	0.42825
72	34.636	VB	0.0845	302.46860	47.38455	0.45794
73	35.150	BV	0.0971	118.74196	16.67893	0.17978
74	35.347	VV	0.0694	124.36504	27.15094	0.18829
75	35.439	VB	0.0586	73.99547	18.52634	0.11203
76	35.690	BB	0.1170	138.25090	15.65704	0.20931
77	35.963	BV	0.0642	64.24814	14.93886	0.09727
78	36.090	VV	0.0804	226.31259	42.28893	0.34264
79	36.319	VV	0.0658	32.14337	7.24472	0.04867
80	36.431	VB	0.0674	70.41096	16.64244	0.10660
81	38.314	BB	0.0593	742.84210	199.93759	1.12466
82	38.507	BV	0.0577	22.48608	6.00062	0.03404
83	38.657	VB	0.0560	21.66981	6.31598	0.03281
84	39.271	BB	0.0663	31.35981	7.58198	0.04748
85	39.593	BV	0.0690	37.21156	7.62192	0.05634
86	39.867	VV	0.0677	363.62766	82.08604	0.55053
87	39.997	VV	0.1061	131.98232	19.72229	0.19982
88	40.257	VB	0.1017	85.78793	11.41430	0.12988
89	40.603	BB	0.1038	119.12179	15.47258	0.18035
90	40.933	BV	0.0729	950.00525	201.71381	1.43831
91	41.093	VV	0.0660	888.90356	207.29021	1.34580
92	41.416	VV	0.0601	899.45410	227.77686	1.36177
93	41.546	VV	0.0574	361.42331	97.23010	0.54719
94	41.649	VV	0.0802	211.60507	41.02206	0.32037
95	41.831	VV	0.1204	849.09509	112.10459	1.28553
96	41.993	VV	0.1296	2843.08252	320.13632	4.30443
97	42.415	VV	0.1329	1.54395e4	1515.23242	23.37546
98	42.654	VV	0.0848	5009.59814	825.33624	7.58453
99	42.898	VV	0.0591	700.59961	181.31596	1.06071
100	43.042	VB	0.0568	147.50496	40.19736	0.22332
101	43.361	BB	0.0669	2489.35547	570.58575	3.76888
102	43.594	BB	0.0554	82.10974	23.14415	0.12431
103	43.976	BV	0.0739	25.85233	5.59254	0.03914
104	44.211	VV	0.0592	270.26144	73.02146	0.40918
105	44.356	VB	0.0733	34.16626	6.96059	0.05173
106	44.611	BB	0.0576	50.21799	14.08904	0.07603
107	44.990	BV	0.0895	60.50578	9.59922	0.09161
108	45.083	VB	0.0709	59.81181	12.70254	0.09056
109	46.235	BV	0.0597	72.64821	19.41223	0.10999
110	46.388	VB	0.0603	20.24650	5.32873	0.03065
111	46.715	BB	0.0533	32.76777	9.73770	0.04961
112	46.952	BB	0.0610	12.75636	3.46052	0.01931

Totals : 6.60502e4 1.24889e4

=====

\*\*\* End of Report \*\*\*