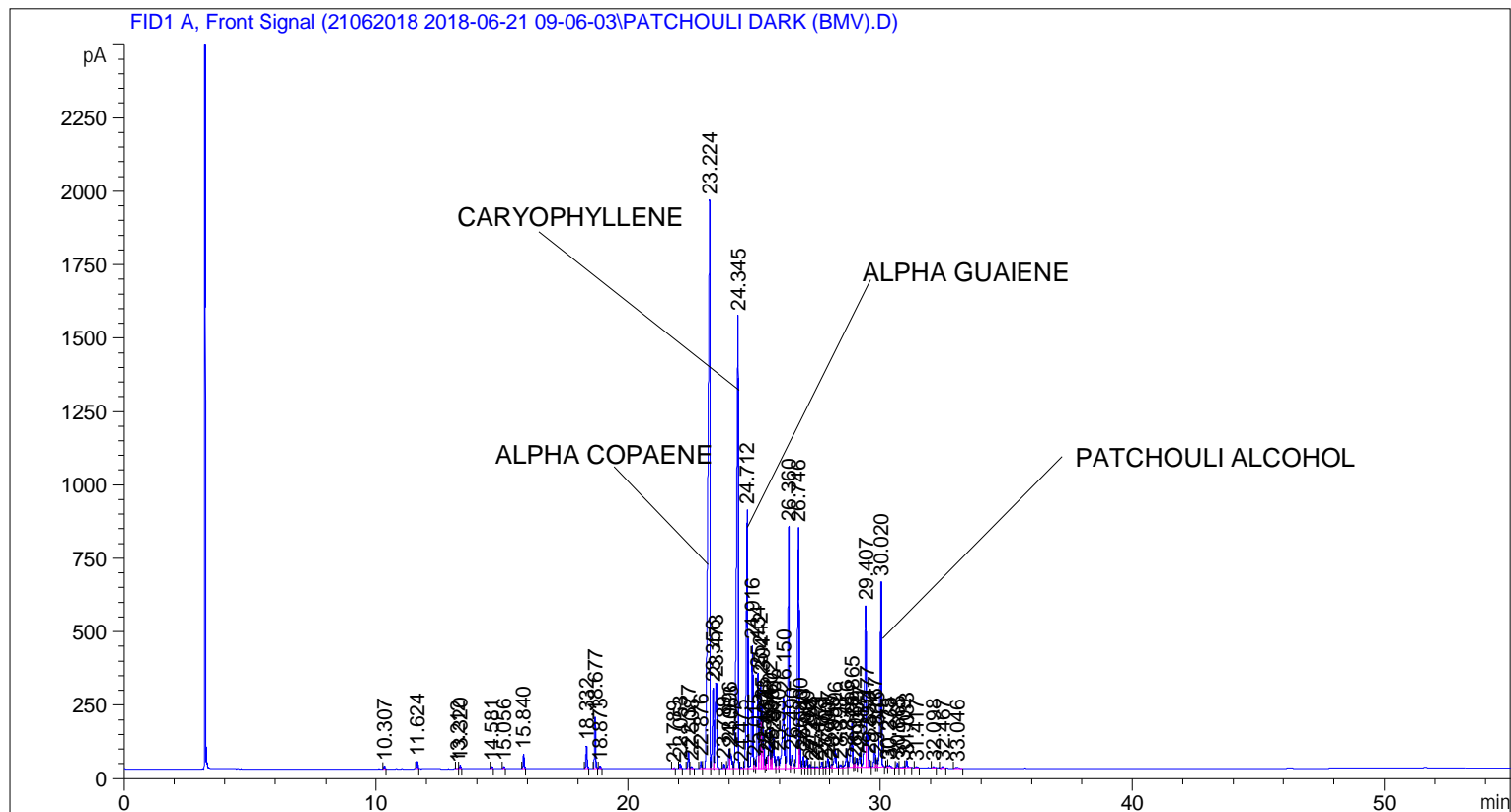


```

=====
Acq. Operator   : SYSTEM                               Seq. Line :    3
Acq. Instrument : BMV_NEW_GC_7820                     Location  : Vial 103
Injection Date  : 6/21/2018 11:36:09 AM                Inj       :    1
                                                    Inj Volume: 0.5 µl

Acq. Method    : C:\CHEM32\2\DATA\21062018 2018-06-21 09-06-03\UNIVERSAL F.M
Last changed   : 6/21/2018 9:06:08 AM by SYSTEM
Analysis Method: C:\CHEM32\2\DATA\21062018 2018-06-21 09-06-03\UNIVERSAL F.M (Sequence
Method)
Last changed   : 6/27/2018 2:14:48 PM by SYSTEM
                (modified after loading)

Additional Info : Peak(s) manually integrated
  
```



=====  
 Area Percent Report  
 =====

```

Sorted By      :      Signal
Multiplier     :      1.0000
Dilution       :      1.0000
Do not use Multiplier & Dilution Factor with ISTDs
  
```

Signal 1: FID1 A, Front Signal

Peak #	RetTime [min]	Type	Width [min]	Area [pA*s]	Height [pA]	Area %
1	10.307	BB	0.0422	27.39613	9.91332	0.05683
2	11.624	BB	0.0436	71.34335	25.50297	0.14799
3	13.212	BV	0.0445	6.66595	2.32472	0.01383
4	13.320	VB	0.0472	32.56520	10.79882	0.06755
5	14.581	BB	0.0468	24.30138	8.15743	0.05041
6	15.056	BB	0.0474	23.89963	7.66246	0.04957

Sample Name: PATCHOULI DARK (BMV)

Peak #	RetTime [min]	Type	Width [min]	Area [pA*s]	Height [pA]	Area %
7	15.840	BB	0.0445	145.42455	50.66001	0.30165
8	18.332	BB	0.0513	258.27313	78.63474	0.53573
9	18.677	BB	0.0457	527.02435	177.22862	1.09320
10	18.873	BB	0.0459	26.23651	9.03486	0.05442
11	21.789	BB	0.0481	7.17820	2.31995	0.01489
12	22.053	BB	0.0496	54.33948	16.85437	0.11272
13	22.377	BV	0.0513	184.66872	56.28768	0.38306
14	22.508	VB	0.0538	23.25299	6.81320	0.04823
15	22.876	BV	0.0546	83.43248	23.38748	0.17306
16	23.224	VV	0.0785	1.08747e4	1936.92578	22.55720
17	23.356	VV	0.0533	974.69385	275.22665	2.02180
18	23.473	VB	0.0687	1246.04382	292.37140	2.58465
19	23.789	BB	0.0474	50.22620	16.09478	0.10418
20	23.996	BV	0.0521	235.47034	66.77226	0.48843
21	24.063	VV	0.0632	226.18040	51.52549	0.46916
22	24.345	VV	0.0618	7241.31445	1541.22729	15.02057
23	24.475	VV	0.0643	21.92236	4.88815	0.04547
24	24.712	VV	0.0533	3266.13965	880.27716	6.77492
25	24.916	VV	0.0504	1451.37109	419.17844	3.01056
26	25.015	VV	0.0538	89.98649	25.74383	0.18666
27	25.134	VV	0.0523	1091.16980	323.51968	2.26340
28	25.242	VV	0.0545	1091.12573	299.39902	2.26331
29	25.304	VV	0.0537	755.37030	216.65646	1.56686
30	25.373	VV	0.0378	179.58853	72.74028	0.37252
31	25.460	VV	0.0459	90.40248	30.20962	0.18752
32	25.534	VV	0.0408	122.62286	44.93973	0.25436
33	25.602	VV	0.0596	526.02631	134.58990	1.09113
34	25.690	VV	0.0360	98.09534	39.49393	0.20348
35	25.756	VV	0.0584	427.47476	107.58651	0.88671
36	25.930	VV	0.0753	227.65160	40.04178	0.47222
37	26.150	VV	0.0897	1474.32629	243.28482	3.05818
38	26.360	VV	0.0544	3062.02051	823.64404	6.35151
39	26.490	VV	0.0759	223.93285	44.35302	0.46450
40	26.746	VV	0.0590	3229.18506	819.36218	6.69826
41	26.800	VV	0.0333	168.26337	77.62022	0.34903
42	26.943	VV	0.0502	134.60635	41.06491	0.27921
43	27.080	VV	0.0540	126.73586	36.06813	0.26289
44	27.203	VV	0.0488	42.29131	13.78578	0.08772
45	27.324	VV	0.0648	27.49714	5.96168	0.05704
46	27.473	VV	0.0630	21.30128	4.77648	0.04418
47	27.671	VV	0.0479	65.91920	21.41842	0.13674
48	27.809	VV	0.0632	20.65261	4.99787	0.04284
49	27.907	VV	0.0601	124.00154	31.36838	0.25721
50	28.055	VV	0.0479	43.70657	13.46060	0.09066
51	28.196	VV	0.0665	307.10907	64.54766	0.63703
52	28.398	VV	0.0736	55.22755	11.19364	0.11456
53	28.656	VV	0.0611	261.13748	64.65884	0.54167
54	28.865	VV	0.0677	700.83368	149.48370	1.45373
55	28.962	VV	0.0471	52.75123	16.15890	0.10942
56	29.039	VV	0.0581	119.74044	30.28961	0.24838
57	29.177	VV	0.0634	224.05028	50.82349	0.46474
58	29.407	VV	0.0579	2258.95508	550.26373	4.68572
59	29.477	VV	0.0473	364.49347	113.96606	0.75606
60	29.550	VV	0.0447	73.33760	25.36042	0.15212

Peak #	RetTime [min]	Type	Width [min]	Area [pA*s]	Height [pA]	Area %
61	29.767	VV	0.0595	296.80081	76.09040	0.61565
62	29.865	VV	0.0480	80.91392	24.84498	0.16784
63	30.020	VB	0.0590	2545.28613	631.27832	5.27966
64	30.275	BV	0.0459	17.76079	5.93469	0.03684
65	30.338	VB	0.0732	36.11016	6.26638	0.07490
66	30.665	BV	0.0501	53.55882	16.42160	0.11110
67	30.909	VV	0.0657	19.71676	4.28587	0.04090
68	31.033	VB	0.0573	97.78300	25.74790	0.20283
69	31.417	BB	0.0624	15.25872	3.60461	0.03165
70	32.098	BB	0.0732	23.40039	4.68698	0.04854
71	32.467	BB	0.0712	28.94130	6.72318	0.06003
72	33.046	BB	0.1051	28.15098	3.28214	0.05839

Totals : 4.82093e4 1.13721e4

=====  
\*\*\* End of Report \*\*\*