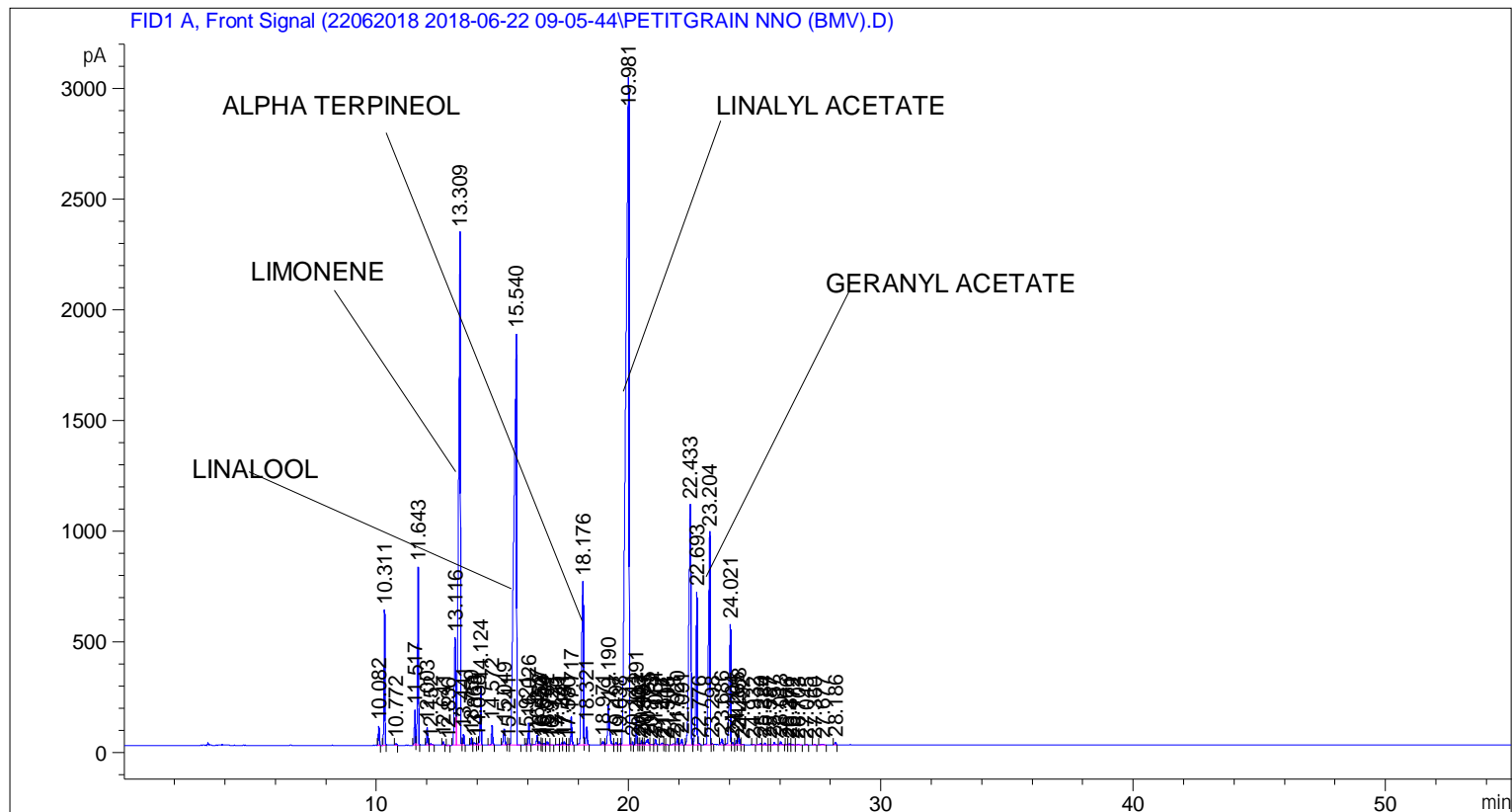


```

=====
Acq. Operator   : SYSTEM                               Seq. Line :    2
Acq. Instrument : BMV_NEW_GC_7820                     Location  : Vial 102
Injection Date  : 6/22/2018 10:30:17 AM                Inj       :    1
                                                    Inj Volume: 0.5 µl

Method          : C:\CHEM32\2\DATA\22062018 2018-06-22 09-05-44\UNIVERSAL F.M (Sequence
                  Method)
Last changed    : 6/22/2018 9:05:49 AM by SYSTEM
Additional Info  : Peak(s) manually integrated
  
```



Area Percent Report

```

Sorted By       : Signal
Multiplier      : 1.0000
Dilution        : 1.0000
Do not use Multiplier & Dilution Factor with ISTDs
  
```

Signal 1: FID1 A, Front Signal

Peak #	RetTime [min]	Type	Width [min]	Area [pA*s]	Height [pA]	Area %
1	10.082	BB	0.0421	231.61270	86.90415	0.27913
2	10.311	BB	0.0427	1660.89478	610.88196	2.00163
3	10.772	BB	0.0433	18.01152	6.51154	0.02171
4	11.517	BV	0.0491	491.43945	158.97495	0.59226
5	11.643	VB	0.0455	2310.18921	804.14270	2.78413
6	12.003	BB	0.0428	228.13503	81.26754	0.27494
7	12.152	BB	0.0640	34.24841	7.40341	0.04127
8	12.641	BB	0.0440	44.13909	15.62103	0.05319
9	12.836	BB	0.0474	8.08357	2.66378	0.00974

Sample Name: PETITGRAIN NNO (BMV)

Peak #	RetTime [min]	Type	Width [min]	Area [pA*s]	Height [pA]	Area %
10	13.116	BV	0.0808	2365.89502	485.62366	2.85126
11	13.309	VV	0.0624	1.09859e4	2314.37207	13.23966
12	13.441	VB	0.0427	132.78552	48.87054	0.16003
13	13.759	BV	0.0423	94.21855	35.08845	0.11355
14	13.863	VB	0.0643	56.38741	12.12485	0.06796
15	14.038	BV	0.0426	34.80173	12.85278	0.04194
16	14.124	VB	0.0430	717.61322	261.90393	0.86483
17	14.572	BB	0.0487	277.79080	88.29446	0.33478
18	15.049	BB	0.0624	288.63281	71.00475	0.34785
19	15.241	BV	0.0390	8.83267	3.67663	0.01064
20	15.540	VB	0.0922	1.35714e4	1858.54602	16.35561
21	15.921	BV	0.0420	13.90777	5.23412	0.01676
22	16.026	VB	0.0445	289.14563	100.68579	0.34846
23	16.357	BV	0.0515	144.98320	41.72232	0.17473
24	16.452	VV	0.0669	69.66244	15.95971	0.08395
25	16.550	VV	0.0426	15.22307	5.27798	0.01835
26	16.644	VV	0.0460	26.23925	8.74354	0.03162
27	16.762	VB	0.0534	57.38728	16.18908	0.06916
28	16.925	BB	0.0478	5.90907	1.92632	0.00712
29	17.170	BB	0.0576	17.49595	4.48074	0.02109
30	17.341	BV	0.0559	40.63820	11.60017	0.04898
31	17.431	VB	0.0639	69.27668	15.28131	0.08349
32	17.580	BV	0.0546	15.33267	4.19994	0.01848
33	17.717	VB	0.0486	408.33701	130.02504	0.49211
34	18.176	BV	0.0656	3505.81421	736.25024	4.22503
35	18.321	VB	0.0606	312.54514	81.69350	0.37666
36	18.971	BV	0.0628	65.28593	16.25780	0.07868
37	19.190	VB	0.0727	919.34845	179.74333	1.10795
38	19.497	BV	0.0737	48.42832	10.71955	0.05836
39	19.638	VV	0.0633	22.83499	5.63218	0.02752
40	19.981	VV	0.1161	2.68726e4	3011.11353	32.38549
41	20.141	VB	0.0380	34.85073	14.00313	0.04200
42	20.291	BB	0.0436	341.76996	122.49032	0.41188
43	20.403	BV	0.0563	21.64435	5.83302	0.02608
44	20.497	VV	0.0476	56.65231	18.58022	0.06827
45	20.583	VV	0.0422	28.55792	10.34614	0.03442
46	20.735	VV	0.0706	138.95303	26.31037	0.16746
47	20.873	VB	0.0765	17.02927	3.17827	0.02052
48	21.054	BB	0.0479	79.86234	25.95565	0.09625
49	21.317	BV	0.0700	33.56251	6.98713	0.04045
50	21.414	VV	0.0469	10.99842	3.57590	0.01325
51	21.508	VB	0.0521	7.05329	2.00146	0.00850
52	21.773	BV	0.0833	40.77089	6.57793	0.04914
53	21.920	VB	0.0479	96.44547	29.72334	0.11623
54	22.091	BB	0.0619	108.93876	27.09565	0.13129
55	22.433	BV	0.0717	5917.96924	1084.68176	7.13204
56	22.693	VV	0.0545	2631.65527	690.02008	3.17154
57	22.776	VB	0.0608	21.65903	5.63727	0.02610
58	23.204	BV	0.0619	4026.54248	960.03955	4.85259
59	23.298	VB	0.0306	9.21213	4.97871	0.01110
60	23.686	BB	0.0567	98.65458	27.56817	0.11889
61	24.021	BV	0.0550	2190.96436	543.72852	2.64044
62	24.104	VB	0.0484	32.88375	10.84578	0.03963
63	24.265	BV	0.0477	71.12650	23.22632	0.08572

Peak #	RetTime [min]	Type	Width [min]	Area [pA*s]	Height [pA]	Area %
64	24.358	VB	0.0511	140.13791	42.94913	0.16889
65	24.492	BB	0.0632	15.48310	3.46145	0.01866
66	24.932	BB	0.0483	8.03790	2.66005	0.00969
67	25.220	BV	0.0690	33.82303	7.17258	0.04076
68	25.384	VB	0.0521	27.66739	8.25124	0.03334
69	25.587	BV	0.0493	7.36647	2.36935	0.00888
70	25.757	VB	0.0617	42.16833	9.89454	0.05082
71	26.013	BB	0.0538	53.78899	15.02498	0.06482
72	26.266	BV	0.0424	5.14520	2.04301	0.00620
73	26.371	VV	0.0484	19.14131	6.30320	0.02307
74	26.472	VB	0.0508	9.82656	3.19915	0.01184
75	26.703	BB	0.0830	22.05015	3.72731	0.02657
76	27.045	BB	0.0455	10.46522	3.53491	0.01261
77	27.360	BB	0.0497	8.11595	2.58147	0.00978
78	27.677	BB	0.0832	28.23940	4.62957	0.03403
79	28.186	BB	0.0524	46.57773	13.12506	0.05613

Totals : 8.29772e4 1.51538e4

=====
*** End of Report ***