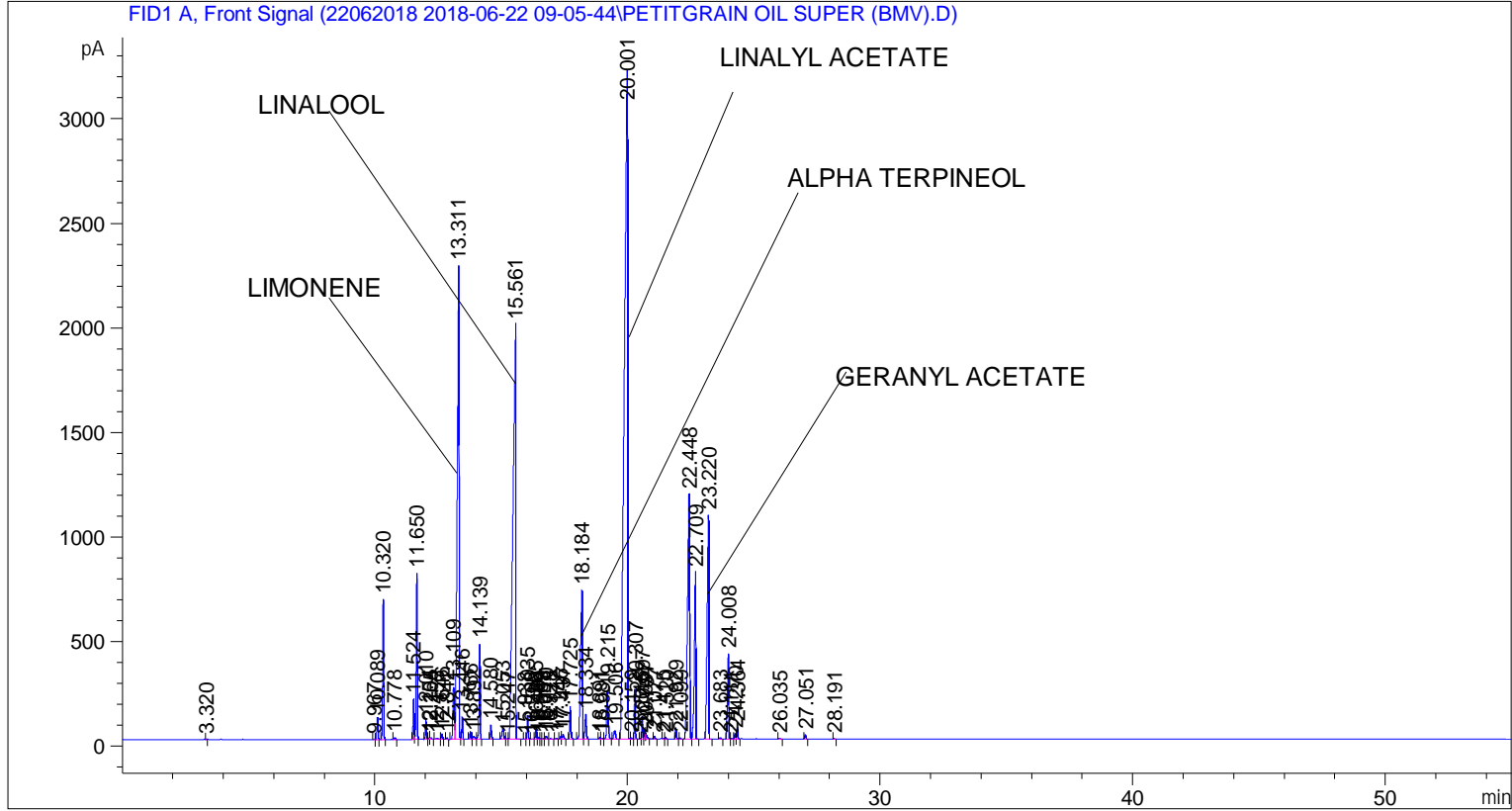


```

=====
Acq. Operator   : SYSTEM                               Seq. Line :    1
Acq. Instrument : BMV_NEW_GC_7820                     Location  : Vial 101
Injection Date  : 6/22/2018 9:21:49 AM                Inj       :    1
                                                    Inj Volume: 0.5 µl

Method         : C:\CHEM32\2\DATA\22062018 2018-06-22 09-05-44\UNIVERSAL F.M (Sequence
                Method)
Last changed   : 6/22/2018 9:05:49 AM by SYSTEM
  
```



Area Percent Report

```

Sorted By      : Signal
Multiplier    : 1.0000
Dilution      : 1.0000
Do not use Multiplier & Dilution Factor with ISTDs
  
```

Signal 1: FID1 A, Front Signal

Peak #	RetTime [min]	Type	Width [min]	Area [pA*s]	Height [pA]	Area %
1	3.320	BB	0.0292	5.58205	2.69206	0.00624
2	9.967	BV	0.0409	5.63750	2.20016	0.00630
3	10.089	VB	0.0413	284.41351	105.96389	0.31773
4	10.320	BB	0.0429	1831.70959	670.30231	2.04631
5	10.778	BB	0.0440	23.22098	8.19796	0.02594
6	11.524	BV	0.0479	598.68921	194.70134	0.66883
7	11.650	VB	0.0447	2295.81982	794.46411	2.56479
8	12.010	BB	0.0432	269.51633	97.72063	0.30109
9	12.154	BV	0.0376	19.94135	7.86249	0.02228
10	12.205	VB	0.0516	28.53996	8.20080	0.03188

Sample Name: PETITGRAIN OIL SUPER (BMV)

Peak #	RetTime [min]	Type	Width [min]	Area [pA*s]	Height [pA]	Area %
11	12.455	BB	0.0631	19.75863	4.42380	0.02207
12	12.646	BB	0.0450	70.71733	24.98997	0.07900
13	12.842	BB	0.0463	19.07784	6.48406	0.02131
14	13.109	BV	0.0728	1133.89893	250.44612	1.26674
15	13.311	VV	0.0630	1.08656e4	2263.42139	12.13853
16	13.446	VB	0.0413	282.59586	105.36201	0.31570
17	13.766	BB	0.0428	102.24624	37.55774	0.11423
18	13.892	BV	0.0655	65.87390	13.84126	0.07359
19	14.139	VB	0.0449	1319.57227	453.69910	1.47417
20	14.580	BB	0.0492	214.47885	67.28002	0.23961
21	15.053	BB	0.0755	261.25555	52.06147	0.29186
22	15.247	BV	0.0578	13.29790	3.38980	0.01486
23	15.561	VB	0.0959	1.54085e4	1976.73303	17.21366
24	15.938	BV	0.0418	6.41103	2.42672	0.00716
25	16.035	VB	0.0432	319.24902	115.70731	0.35665
26	16.208	BB	0.0565	6.65784	1.63660	0.00744
27	16.365	BV	0.0443	143.18733	50.16445	0.15996
28	16.464	VV	0.0543	38.61376	10.90547	0.04314
29	16.569	VV	0.0484	9.11574	2.92403	0.01018
30	16.658	VV	0.0487	9.08298	2.96826	0.01015
31	16.770	VB	0.0526	57.72713	16.59534	0.06449
32	16.928	BB	0.0480	10.53492	3.51184	0.01177
33	17.177	BB	0.0540	17.40232	4.83125	0.01944
34	17.346	BV	0.0556	50.32387	14.12872	0.05622
35	17.437	VB	0.0589	94.25767	23.45084	0.10530
36	17.725	BB	0.0483	490.62125	157.61809	0.54810
37	18.184	BV	0.0693	3554.24390	711.08551	3.97065
38	18.334	VB	0.0640	480.64203	119.33270	0.53695
39	18.891	BV	0.0488	29.76254	9.43077	0.03325
40	18.981	VV	0.0640	19.33509	4.51291	0.02160
41	19.215	VB	0.0697	1061.99878	226.31566	1.18642
42	19.506	BB	0.0801	201.70453	39.82334	0.22534
43	20.001	BV	0.1164	2.96778e4	3193.11865	33.15471
44	20.159	VV	0.0378	14.22846	5.56490	0.01590
45	20.307	VB	0.0420	630.19592	237.33875	0.70403
46	20.516	BV	0.0363	6.62481	2.82891	0.00740
47	20.597	VV	0.0433	299.61713	108.15192	0.33472
48	20.697	VV	0.0444	125.84198	44.00572	0.14059
49	20.751	VB	0.0454	89.89397	28.05419	0.10043
50	21.077	BB	0.0502	44.90961	14.07829	0.05017
51	21.415	BV	0.0517	12.01473	3.52663	0.01342
52	21.520	VB	0.0457	23.67212	8.18589	0.02645
53	21.929	BB	0.0488	169.13631	55.19249	0.18895
54	22.099	BB	0.0624	20.82245	5.12200	0.02326
55	22.448	BV	0.0773	6845.13477	1169.42017	7.64709
56	22.709	VB	0.0572	3150.95288	796.00952	3.52011
57	23.220	BB	0.0642	4801.57031	1072.22815	5.36411
58	23.683	BB	0.0555	24.95251	7.01297	0.02788
59	24.008	BV	0.0531	1476.37805	408.65756	1.64935
60	24.111	VB	0.0510	9.95336	2.90369	0.01112
61	24.270	BV	0.0477	80.32854	26.25916	0.08974
62	24.364	VB	0.0464	170.94363	58.00496	0.19097
63	26.035	BB	0.0633	18.94021	4.39210	0.02116
64	27.051	BB	0.0477	69.28753	22.63809	0.07741

Peak #	RetTime [min]	Type	Width [min]	Area [pA*s]	Height [pA]	Area %
65	28.191	BB	0.0484	9.06022	2.90088	0.01012

Totals : 8.95129e4 1.59450e4

=====  
\*\*\* End of Report \*\*\*