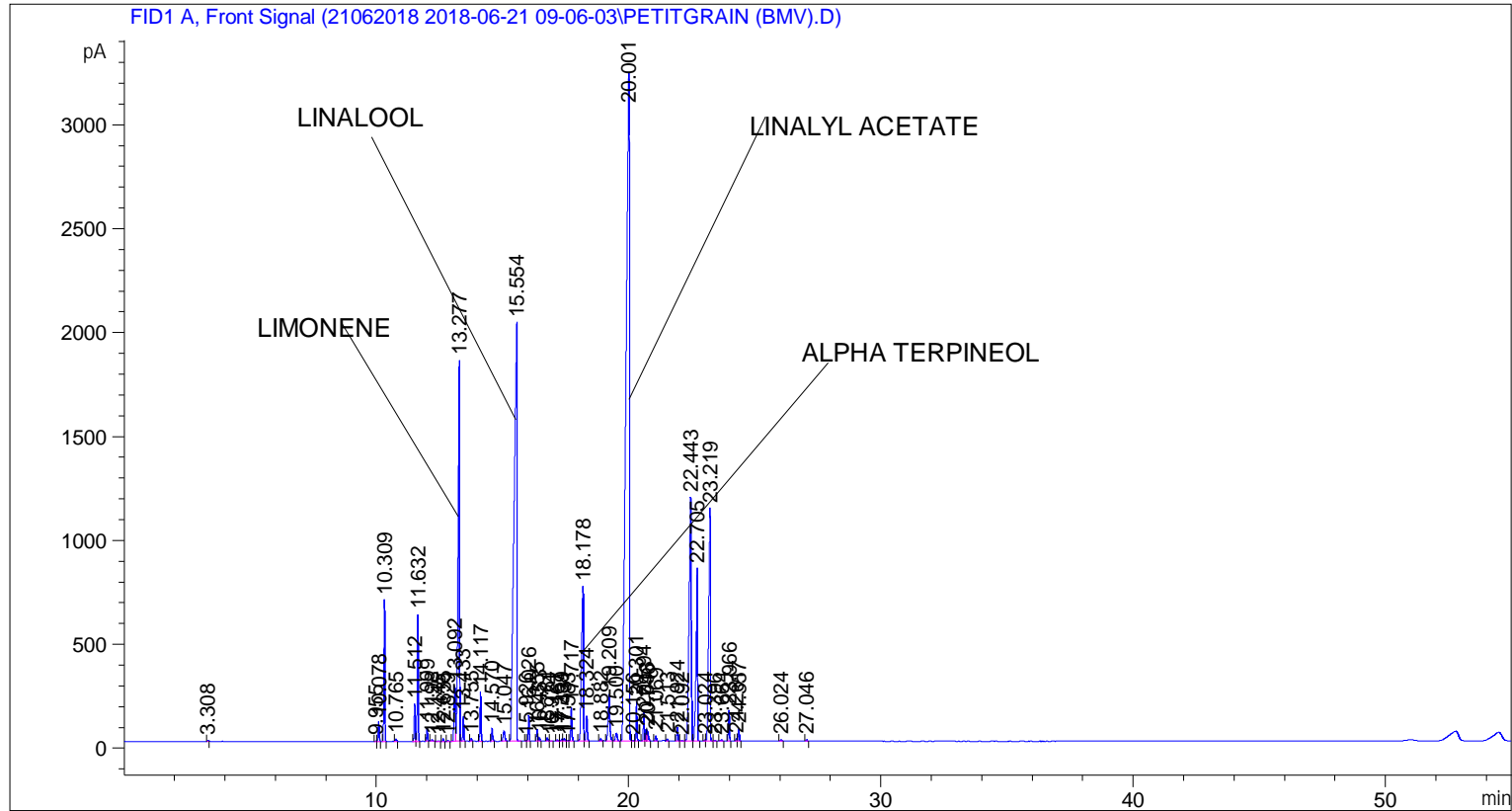


```

=====
Acq. Operator   : SYSTEM                               Seq. Line :    6
Acq. Instrument : BMV_NEW_GC_7820                     Location  : Vial 106
Injection Date  : 6/21/2018 3:01:07 PM                 Inj       :    1
                                                    Inj Volume: 0.5 µl
Method          : C:\CHEM32\2\DATA\21062018 2018-06-21 09-06-03\UNIVERSAL F.M (Sequence
                  Method)
Last changed    : 6/21/2018 9:06:08 AM by SYSTEM
Additional Info  : Peak(s) manually integrated
  
```



=====
 Area Percent Report
 =====

```

Sorted By      :      Signal
Multiplier     :      1.0000
Dilution      :      1.0000
Do not use Multiplier & Dilution Factor with ISTDs
  
```

Signal 1: FID1 A, Front Signal

Peak #	RetTime [min]	Type	Width [min]	Area [pA*s]	Height [pA]	Area %
1	3.308	BB	0.0280	11.61011	5.89708	0.01349
2	9.955	BV	0.0399	4.39088	1.71105	0.00510
3	10.078	VB	0.0424	259.14316	96.42698	0.30102
4	10.309	BB	0.0430	1865.44299	680.76361	2.16688
5	10.765	BB	0.0440	29.83468	10.54649	0.03466
6	11.512	BV	0.0466	540.94873	182.15132	0.62836
7	11.632	VB	0.0435	1698.71069	609.62164	1.97320
8	11.999	BB	0.0430	187.27226	68.31767	0.21753
9	12.198	BB	0.0562	29.34479	7.41485	0.03409

Sample Name: PETITGRAIN (BMV)

Peak #	RetTime [min]	Type	Width [min]	Area [pA*s]	Height [pA]	Area %
10	12.445	BB	0.0605	12.32458	3.08926	0.01432
11	12.635	BB	0.0446	35.94708	12.88416	0.04176
12	12.829	BB	0.0460	13.60238	4.66725	0.01580
13	13.092	BV	0.0614	1036.38171	266.42896	1.20385
14	13.277	VV	0.0566	7644.39209	1833.47937	8.87964
15	13.433	VB	0.0414	325.06293	120.83315	0.37759
16	13.755	BB	0.0423	37.19548	13.88367	0.04321
17	14.117	BB	0.0441	658.12360	239.43985	0.76447
18	14.570	BB	0.0494	203.09442	63.34250	0.23591
19	15.047	BB	0.0713	234.41156	49.47227	0.27229
20	15.554	BB	0.0983	1.59041e4	2010.86743	18.47403
21	15.926	BV	0.0414	12.45050	4.62036	0.01446
22	16.026	VB	0.0428	345.86871	127.05817	0.40176
23	16.355	BV	0.0439	155.97275	55.27095	0.18118
24	16.453	VB	0.0459	47.88884	16.00708	0.05563
25	16.761	BB	0.0528	55.49387	15.85337	0.06446
26	16.924	BB	0.0424	5.91500	2.26815	0.00687
27	17.167	BB	0.0510	22.97902	6.86652	0.02669
28	17.339	BV	0.0564	41.67762	11.75317	0.04841
29	17.431	VV	0.0599	55.60782	14.12795	0.06459
30	17.583	VV	0.0576	21.83088	5.70738	0.02536
31	17.717	VB	0.0485	511.88187	163.63515	0.59460
32	18.178	BV	0.0710	3763.19556	744.48956	4.37129
33	18.324	VB	0.0629	478.72104	121.59975	0.55608
34	18.882	BB	0.0516	38.80484	11.43014	0.04508
35	19.209	BB	0.0632	1025.17346	224.94775	1.19083
36	19.500	BB	0.0822	184.44417	36.35697	0.21425
37	20.001	BV	0.1285	3.09590e4	3209.78687	35.96161
38	20.156	VV	0.0383	10.96290	4.22509	0.01273
39	20.301	VB	0.0400	495.53897	186.55457	0.57561
40	20.594	BV	0.0449	385.27512	136.61693	0.44753
41	20.693	VV	0.0436	149.04536	53.40236	0.17313
42	20.746	VB	0.0466	135.83044	43.33696	0.15778
43	21.069	BB	0.0497	80.88862	25.68885	0.09396
44	21.513	BB	0.0450	29.22472	10.32261	0.03395
45	21.924	BB	0.0474	194.19762	64.01436	0.22558
46	22.092	BV	0.0579	14.37778	3.50002	0.01670
47	22.443	VV	0.0803	7073.90625	1173.65784	8.21697
48	22.705	VB	0.0554	3300.19897	830.30005	3.83347
49	23.024	BV	0.0517	18.26439	5.10449	0.02122
50	23.219	VB	0.0594	5022.39355	1117.58411	5.83396
51	23.396	BB	0.0444	7.83253	2.82132	0.00910
52	23.664	BB	0.0553	22.10799	6.09491	0.02568
53	23.966	BB	0.0447	429.43027	148.50893	0.49882
54	24.261	BV	0.0468	35.54856	11.91804	0.04129
55	24.357	VB	0.0456	175.52022	59.24123	0.20388
56	26.024	BB	0.0530	26.65597	7.40033	0.03096
57	27.046	BB	0.0486	23.55707	7.71995	0.02736

Totals : 8.60890e4 1.49510e4

```

=====
*** End of Report ***

```