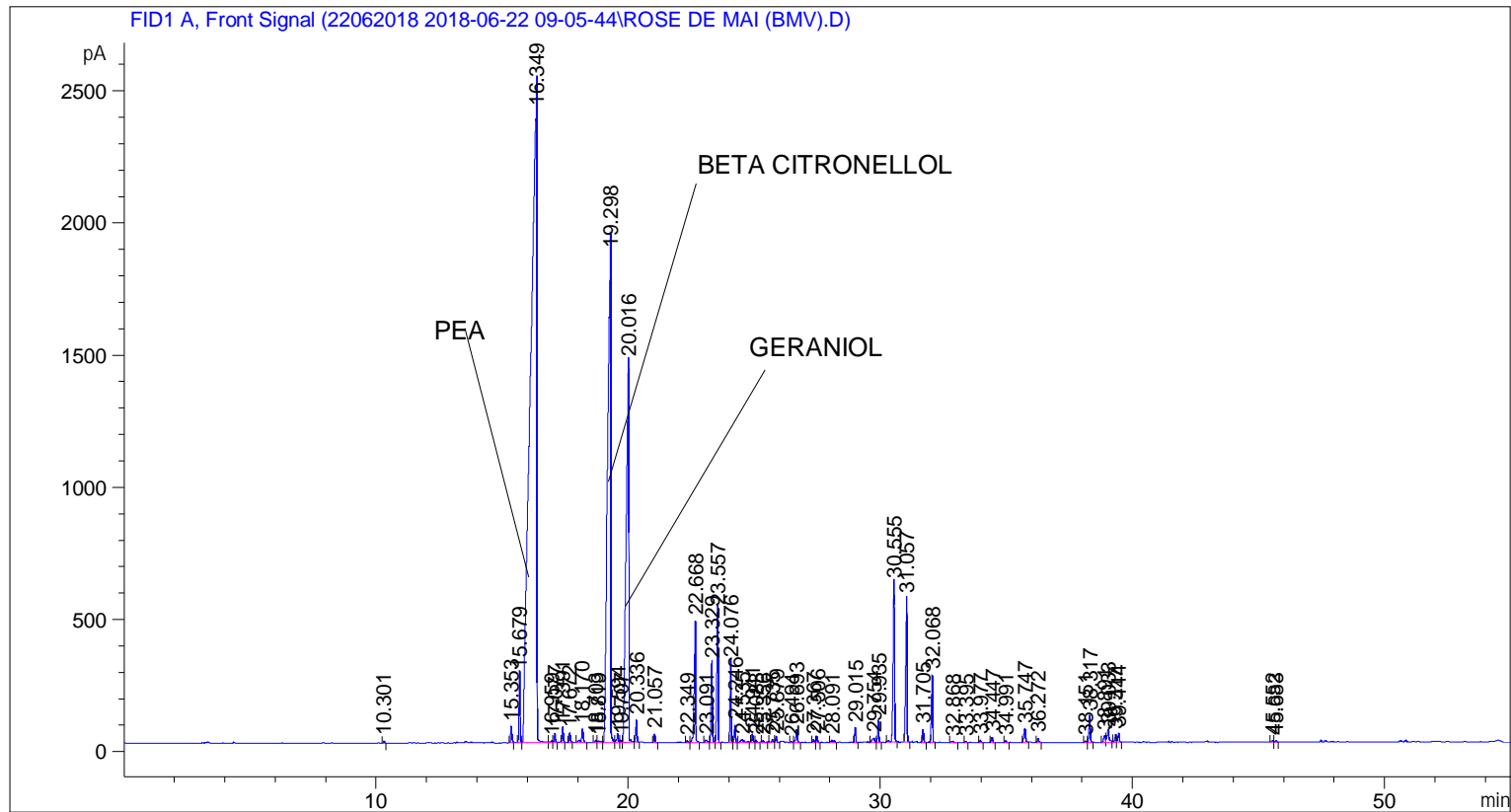


```

=====
Acq. Operator   : SYSTEM                               Seq. Line :    6
Acq. Instrument : BMV_NEW_GC_7820                     Location  : Vial 106
Injection Date  : 6/22/2018 3:06:31 PM                 Inj       :    1
                                                    Inj Volume: 0.5 µl

Acq. Method    : C:\CHEM32\2\DATA\22062018 2018-06-22 09-05-44\UNIVERSAL F.M
Last changed   : 6/22/2018 9:05:49 AM by SYSTEM
Analysis Method : C:\CHEM32\2\DATA\22062018 2018-06-22 09-05-44\UNIVERSAL F.M (Sequence
Method)
Last changed   : 6/29/2018 3:13:42 PM by SYSTEM
                (modified after loading)
Additional Info : Peak(s) manually integrated
  
```



=====
 Area Percent Report
 =====

```

Sorted By       :      Signal
Multiplier     :      1.0000
Dilution       :      1.0000
Do not use Multiplier & Dilution Factor with ISTDs
  
```

Signal 1: FID1 A, Front Signal

Peak #	RetTime [min]	Type	Width [min]	Area [pA*s]	Height [pA]	Area %
1	10.301	BB	0.0459	21.60089	7.42959	0.02405
2	15.353	BB	0.0530	214.93761	61.14633	0.23932
3	15.679	BV	0.0516	794.25543	260.17191	0.88437
4	16.349	VB	0.2399	4.49502e4	2475.21899	50.04988
5	16.959	BV	0.0836	43.54365	7.50951	0.04848
6	17.077	VB	0.0563	122.94303	35.59550	0.13689

Sample Name: ROSE DE MAI (BMV)

Peak #	RetTime [min]	Type	Width [min]	Area [pA*s]	Height [pA]	Area %
7	17.391	BB	0.0489	185.96237	58.82513	0.20706
8	17.672	BB	0.0501	121.14397	37.09216	0.13489
9	18.170	BB	0.0764	270.26898	52.22046	0.30093
10	18.703	BV	0.0619	36.68505	9.32265	0.04085
11	18.819	VV	0.1265	56.42043	5.95566	0.06282
12	19.298	VV	0.1421	1.74732e4	1851.17578	19.45556
13	19.594	VV	0.0597	130.63133	31.95824	0.14545
14	19.707	VV	0.0511	24.50437	8.14093	0.02728
15	20.016	VV	0.1091	1.05028e4	1440.28418	11.69439
16	20.336	VB	0.0539	277.38458	85.41378	0.30885
17	21.057	BB	0.0509	95.91820	32.03718	0.10680
18	22.349	BV	0.0617	23.53226	6.00635	0.02620
19	22.668	VB	0.0611	1788.52710	462.35168	1.99144
20	23.091	BV	0.0731	54.47867	10.40181	0.06066
21	23.329	VV	0.0520	1021.63611	298.13730	1.13754
22	23.557	VB	0.0577	1785.88501	499.49518	1.98850
23	24.076	BV	0.0493	968.13739	303.00946	1.07797
24	24.246	VB	0.0499	215.47821	66.36997	0.23992
25	24.535	BB	0.1335	109.91442	12.63438	0.12238
26	24.941	BV	0.0510	112.49482	33.65818	0.12526
27	25.083	VB	0.0486	27.41992	9.82464	0.03053
28	25.356	BB	0.0484	22.79151	7.30421	0.02538
29	25.735	BV	0.0575	35.77415	10.05939	0.03983
30	25.879	VB	0.0503	65.18657	22.17201	0.07258
31	26.494	BV	0.0561	15.93943	4.63705	0.01775
32	26.693	VB	0.0657	208.12503	48.80786	0.23174
33	27.367	BV	0.0540	43.50234	12.07010	0.04844
34	27.506	VB	0.0555	75.51942	22.30889	0.08409
35	28.091	BB	0.0966	67.35030	9.74457	0.07499
36	29.015	BB	0.0536	178.32852	55.26135	0.19856
37	29.754	BV	0.1068	107.13927	16.71074	0.11929
38	29.935	VB	0.0543	272.62476	82.98367	0.30355
39	30.555	BB	0.0654	2535.52588	599.05096	2.82319
40	31.057	BB	0.0614	2112.07471	542.81995	2.35169
41	31.705	BB	0.0573	170.82526	48.22425	0.19021
42	32.068	BB	0.0552	862.34338	256.60049	0.96018
43	32.868	BB	0.1019	31.34058	5.23271	0.03490
44	33.395	BB	0.0531	20.69918	5.87470	0.02305
45	33.977	BB	0.0556	29.55287	8.70484	0.03291
46	34.447	BB	0.0589	86.14723	21.44934	0.09592
47	34.991	BB	0.0539	27.24015	8.38656	0.03033
48	35.747	BB	0.0787	262.54059	52.19884	0.29233
49	36.272	BB	0.0572	56.11790	15.88823	0.06248
50	38.151	BV	0.0573	21.36162	6.04028	0.02379
51	38.317	VB	0.0590	369.19489	100.08337	0.41108
52	38.891	BV	0.0892	146.97757	26.31111	0.16365
53	39.033	VB	0.0812	270.15723	48.32554	0.30081
54	39.317	BV	0.0624	119.52422	30.05702	0.13308
55	39.444	VB	0.0606	131.93555	34.50917	0.14690
56	45.552	BV	0.0606	18.76130	4.90966	0.02089
57	45.683	VB	0.0588	16.27825	4.43303	0.01813

Totals : 8.98108e4 1.02725e4

Sample Name: ROSE DE MAI (BMV)

=====

*** End of Report ***