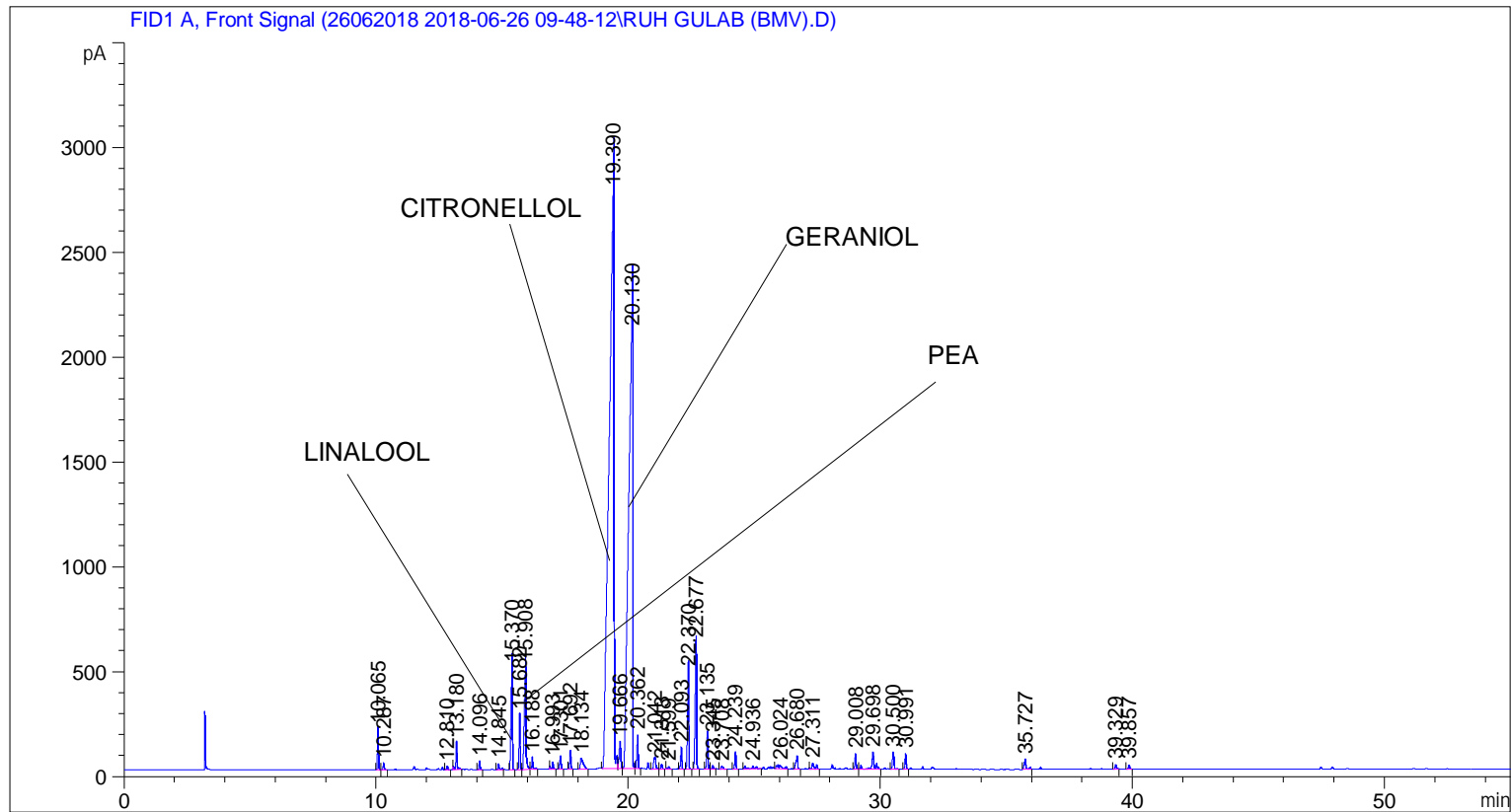


```

=====
Acq. Operator   : SYSTEM                               Seq. Line :    1
Acq. Instrument : BMV_NEW_GC_7820                     Location  : Vial 101
Injection Date  : 6/26/2018 10:05:36 AM                Inj       :    1
                                                    Inj Volume: 0.5 µl

Acq. Method     : C:\CHEM32\2\DATA\26062018 2018-06-26 09-48-12\UNIVERSAL F.M
Last changed    : 6/26/2018 9:48:18 AM by SYSTEM
Analysis Method : C:\CHEM32\2\DATA\26062018 2018-06-26 09-48-12\UNIVERSAL F.M (Sequence
Method)
Last changed    : 6/29/2018 4:04:19 PM by SYSTEM
                  (modified after loading)

Additional Info  : Peak(s) manually integrated
  
```



=====
 Area Percent Report
 =====

```

Sorted By       :      Signal
Multiplier      :      1.0000
Dilution        :      1.0000
Do not use Multiplier & Dilution Factor with ISTDs
  
```

Signal 1: FID1 A, Front Signal

Peak #	RetTime [min]	Type	Width [min]	Area [pA*s]	Height [pA]	Area %
1	10.065	BB	0.0487	550.97144	196.62416	0.66737
2	10.287	BB	0.0532	87.31851	30.72538	0.10577
3	12.810	BB	0.0529	50.35491	17.87011	0.06099
4	13.180	BB	0.0579	439.95197	135.36198	0.53290
5	14.096	BB	0.0540	117.67148	40.41526	0.14253
6	14.845	BB	0.0697	118.86276	27.88838	0.14397

Sample Name: RUH GULAB (BMV)

Peak #	RetTime [min]	Type	Width [min]	Area [pA*s]	Height [pA]	Area %
7	15.370	BB	0.0681	2005.66650	486.76318	2.42939
8	15.682	BV	0.0494	751.79913	262.25659	0.91063
9	15.908	VV	0.0840	2517.67627	489.18924	3.04957
10	16.188	VB	0.0619	208.27925	58.05043	0.25228
11	16.993	BB	0.0688	156.26921	37.38971	0.18928
12	17.301	BB	0.0678	255.70729	62.40019	0.30973
13	17.692	BB	0.0563	306.09085	88.61923	0.37076
14	18.134	BB	0.1172	436.13162	52.34819	0.52827
15	19.390	BV	0.2056	3.91009e4	2755.29932	47.36150
16	19.666	VV	0.0781	639.80377	128.45378	0.77497
17	20.130	VV	0.1611	2.52220e4	2084.88013	30.55058
18	20.362	VB	0.0630	588.58972	159.57161	0.71294
19	21.042	BV	0.1146	352.22708	49.76980	0.42664
20	21.313	VB	0.0621	86.81125	24.04048	0.10515
21	21.599	BB	0.0692	51.78629	12.28813	0.06273
22	22.093	BB	0.0599	347.06921	101.49349	0.42039
23	22.370	BB	0.0646	1784.49915	466.56448	2.16150
24	22.677	BB	0.0693	2537.68042	600.13177	3.07380
25	23.135	BV	0.0571	582.14722	182.84955	0.70513
26	23.345	VB	0.0706	72.28278	16.68147	0.08755
27	23.708	BB	0.1048	75.64578	12.12210	0.09163
28	24.239	BB	0.0594	267.31381	79.11073	0.32379
29	24.936	BB	0.1686	171.46513	13.46112	0.20769
30	26.024	BB	0.1916	257.18860	17.08253	0.31152
31	26.680	BB	0.0802	307.00891	63.74162	0.37187
32	27.311	BB	0.1149	207.59711	26.64833	0.25146
33	29.008	BV	0.0615	263.04926	73.97583	0.31862
34	29.698	VB	0.1065	603.84143	81.44137	0.73141
35	30.500	BB	0.0712	356.82178	81.28549	0.43221
36	30.991	BB	0.0585	241.13512	72.99064	0.29208
37	35.727	BB	0.0846	253.02084	45.69548	0.30648
38	39.329	BB	0.0744	104.53228	22.42325	0.12662
39	39.857	BB	0.0665	81.14592	20.36416	0.09829

Totals : 8.25583e4 9178.26869

=====
*** End of Report ***