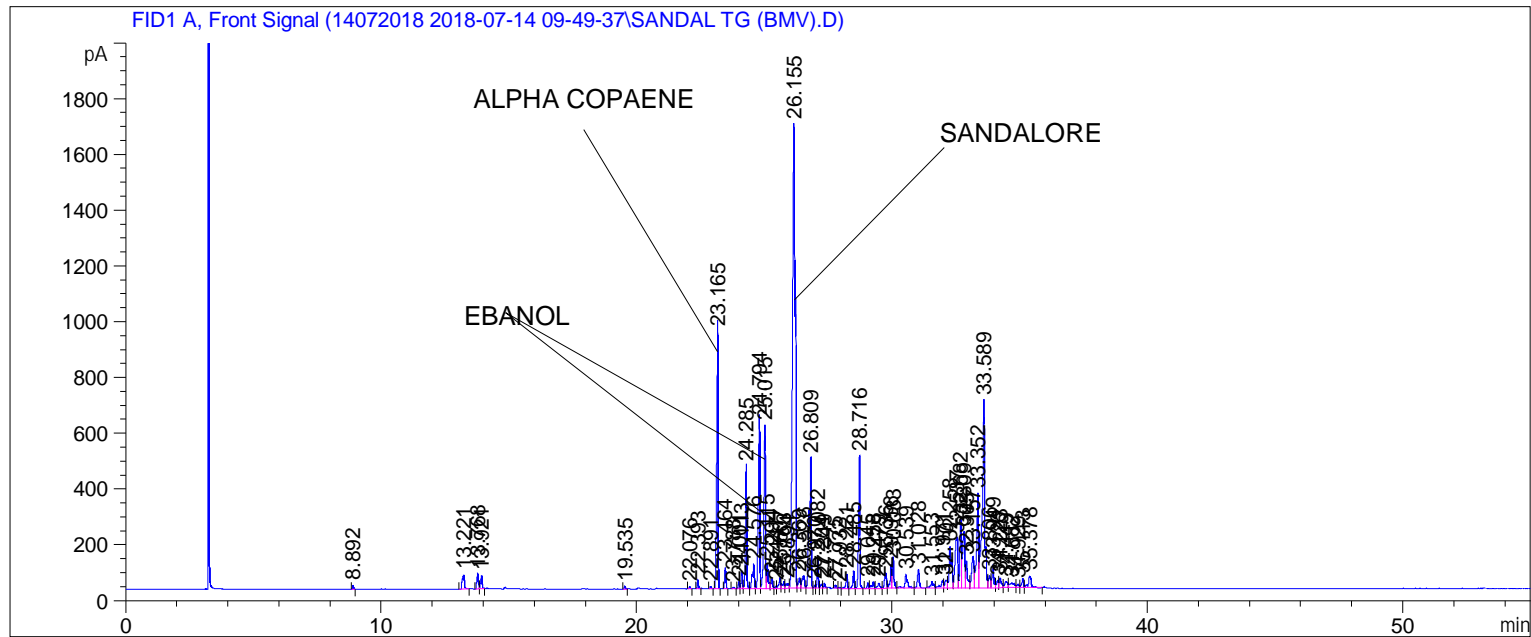


Sample Name: SANDAL TG (BMV)

```

=====
Acq. Operator   : SYSTEM                               Seq. Line :    1
Acq. Instrument : BMV_NEW_GC_7820                     Location  : Vial 101
Injection Date  : 7/14/2018 10:01:24 AM              Inj       :    1
                                                    Inj Volume: 0.5 µl

Acq. Method    : C:\CHEM32\2\DATA\14072018 2018-07-14 09-49-37\UNIVERSAL BMV.M
Last changed   : 7/14/2018 9:49:43 AM by SYSTEM
Analysis Method: C:\CHEM32\2\DATA\14072018 2018-07-14 09-49-37\UNIVERSAL BMV.M (Sequence
Method)
Last changed   : 7/16/2018 11:19:10 AM by SYSTEM
                (modified after loading)
Additional Info : Peak(s) manually integrated
=====
    
```



Area Percent Report

```

Sorted By      : Signal
Multiplier    : 1.0000
Dilution      : 1.0000
Do not use Multiplier & Dilution Factor with ISTDs
    
```

Signal 1: FID1 A, Front Signal

Peak #	RetTime [min]	Type	Width [min]	Area [pA*s]	Height [pA]	Area %
1	8.892	BB	0.0431	34.99336	13.11070	0.07260
2	13.221	BB	0.1057	309.89993	50.41992	0.64293
3	13.768	BV	0.0695	242.54623	54.96877	0.50319
4	13.921	VB	0.0679	188.77528	45.94263	0.39164
5	19.535	BB	0.0617	35.69699	9.11474	0.07406
6	22.076	BB	0.0486	24.98545	8.42153	0.05184
7	22.393	BB	0.0509	104.62063	33.05979	0.21705
8	22.891	BB	0.0519	28.39742	8.74431	0.05891
9	23.165	BB	0.0601	3637.92017	920.39807	7.54735
10	23.464	BB	0.0552	268.07489	75.82323	0.55616

Sample Name: SANDAL TG (BMV)

```

=====
Acq. Operator   : SYSTEM                               Seq. Line :    1
Acq. Instrument : BMV_NEW_GC_7820                       Location  : Vial 101
Injection Date  : 7/14/2018 10:01:24 AM                Inj       :    1
                                                    Inj Volume: 0.5 µl

Acq. Method     : C:\CHEM32\2\DATA\14072018 2018-07-14 09-49-37\UNIVERSAL BMV.M
Last changed    : 7/14/2018 9:49:43 AM by SYSTEM
Analysis Method : C:\CHEM32\2\DATA\14072018 2018-07-14 09-49-37\UNIVERSAL BMV.M (Sequence
Method)
Last changed    : 7/16/2018 11:19:10 AM by SYSTEM
                  (modified after loading)
Additional Info  : Peak(s) manually integrated
=====

```

Peak #	RetTime [min]	Type	Width [min]	Area [pA*s]	Height [pA]	Area %
11	23.788	BB	0.0624	24.90288	6.25886	0.05166
12	24.001	BV	0.0555	84.67736	25.00174	0.17567
13	24.113	VV	0.0528	209.76340	63.06369	0.43518
14	24.285	VB	0.0546	1518.70081	436.73087	3.15075
15	24.576	BV	0.0746	472.86371	88.08665	0.98102
16	24.794	VV	0.0605	2398.96875	601.80640	4.97698
17	25.015	VV	0.0667	2545.61230	585.36798	5.28121
18	25.115	VB	0.0597	375.15854	91.69482	0.77832
19	25.294	BV	0.0667	157.65771	34.87393	0.32708
20	25.447	VV	0.0571	31.17760	8.42990	0.06468
21	25.607	VV	0.0635	169.16498	38.30695	0.35096
22	25.763	VV	0.0815	139.48965	24.11212	0.28939
23	25.894	VV	0.0957	122.90398	17.99275	0.25498
24	26.155	VV	0.1118	1.28073e4	1663.90576	26.57055
25	26.369	VV	0.0825	197.79269	36.94431	0.41035
26	26.526	VV	0.0997	292.62204	43.91850	0.60708
27	26.809	VV	0.0760	2469.52759	464.67834	5.12337
28	26.970	VV	0.0507	34.57231	10.99216	0.07172
29	27.082	VV	0.0490	322.79645	107.65009	0.66968
30	27.234	VV	0.0826	60.22071	12.40394	0.12494
31	27.349	VB	0.0500	56.71845	18.37078	0.11767
32	27.775	BB	0.0478	33.03182	11.38858	0.06853
33	27.932	BV	0.0539	14.18160	4.14381	0.02942
34	28.221	VV	0.0601	203.74969	51.61581	0.42271
35	28.485	VV	0.0552	221.44707	62.71600	0.45942
36	28.716	VB	0.0568	1737.24597	473.12384	3.60415
37	29.045	BV	0.0577	77.08733	20.56893	0.15993
38	29.258	VV	0.0762	125.93374	23.62062	0.26127
39	29.479	VV	0.0875	119.09434	19.43613	0.24708
40	29.736	VV	0.0864	294.61285	55.11944	0.61121
41	29.956	VV	0.0564	327.86526	86.05933	0.68020
42	30.033	VB	0.0583	444.13879	111.88392	0.92143
43	30.539	BV	0.1074	370.31274	48.32856	0.76826
44	31.028	VB	0.0835	349.78287	66.33307	0.72567
45	31.553	BV	0.0974	168.72925	23.61071	0.35005
46	31.971	VV	0.1040	200.81247	27.88981	0.41661
47	32.101	VV	0.1025	203.00911	27.36907	0.42117
48	32.258	VV	0.0890	955.44879	148.62024	1.98221
49	32.537	VV	0.1046	1371.98987	176.73453	2.84638
50	32.682	VV	0.0673	1069.70374	243.47496	2.21924
51	32.809	VV	0.0907	1148.19604	200.88638	2.38209

Sample Name: SANDAL TG (BMV)

```

=====
Acq. Operator   : SYSTEM                               Seq. Line :    1
Acq. Instrument : BMV_NEW_GC_7820                       Location  : Vial 101
Injection Date  : 7/14/2018 10:01:24 AM                Inj       :    1
                                                    Inj Volume: 0.5 µl

Acq. Method     : C:\CHEM32\2\DATA\14072018 2018-07-14 09-49-37\UNIVERSAL BMV.M
Last changed    : 7/14/2018 9:49:43 AM by SYSTEM
Analysis Method : C:\CHEM32\2\DATA\14072018 2018-07-14 09-49-37\UNIVERSAL BMV.M (Sequence
Method)
Last changed    : 7/16/2018 11:19:10 AM by SYSTEM
                (modified after loading)
Additional Info  : Peak(s) manually integrated
=====

```

Peak #	RetTime [min]	Type	Width [min]	Area [pA*s]	Height [pA]	Area %
52	32.905	VV	0.0745	509.71594	95.13318	1.05747
53	33.157	VV	0.1014	730.92664	110.19823	1.51641
54	33.352	VV	0.0763	1734.91162	335.85104	3.59931
55	33.589	VV	0.0922	4495.18018	670.70178	9.32585
56	33.806	VV	0.0810	251.11598	43.71575	0.52097
57	33.949	VV	0.0714	394.45450	80.14998	0.81835
58	34.126	VV	0.0692	128.03180	27.04730	0.26562
59	34.223	VV	0.0862	217.88631	35.20543	0.45203
60	34.449	VV	0.1119	187.44731	22.33796	0.38888
61	34.682	VV	0.1636	217.77191	17.20982	0.45180
62	34.929	VV	0.0787	70.49867	13.12182	0.14626
63	35.113	VV	0.0725	150.44225	31.08952	0.31211
64	35.378	VB	0.1021	307.96756	40.78087	0.63892

Totals : 4.82013e4 9006.06066

```

=====
*** End of Report ***

```