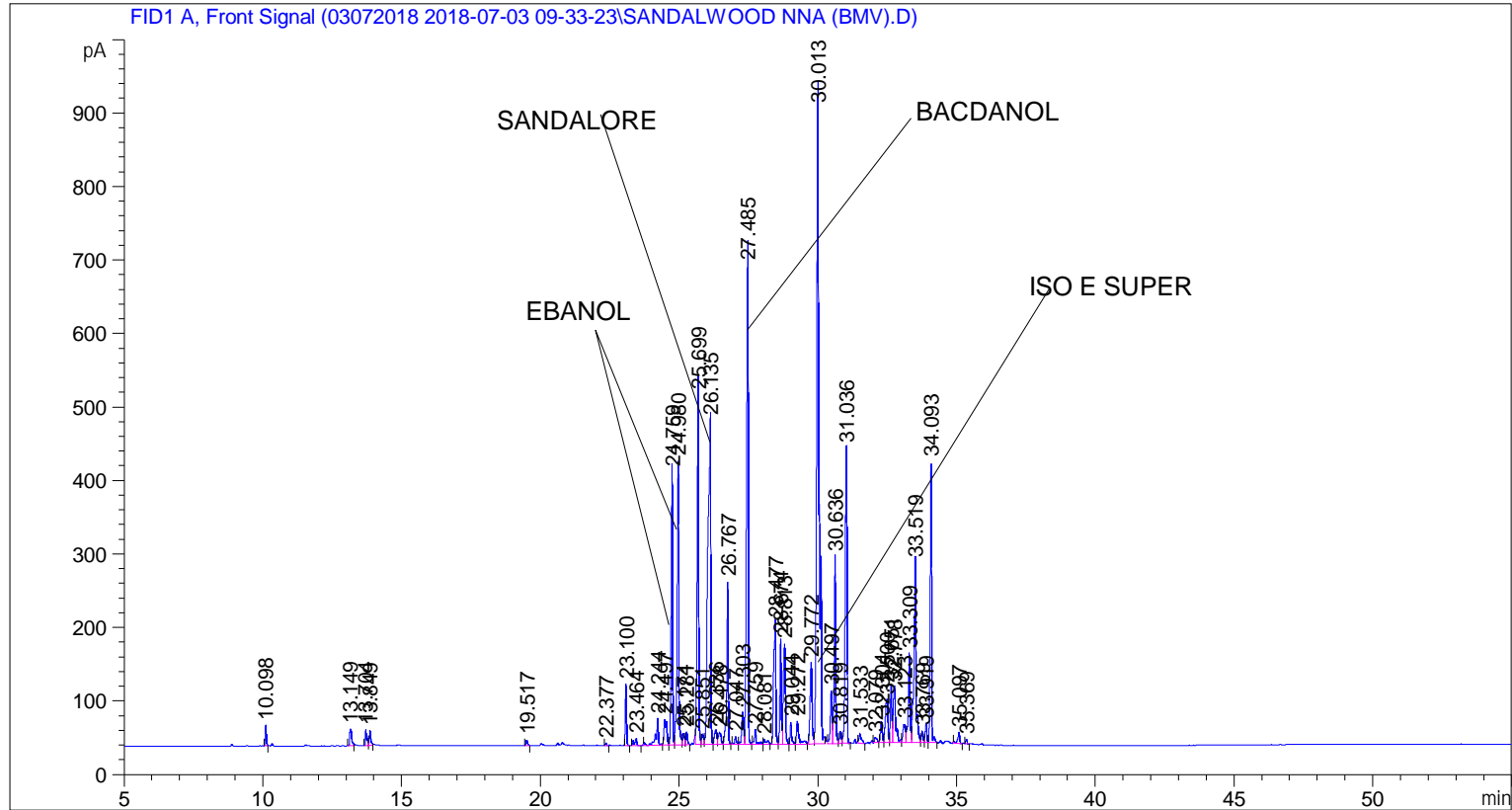


```

=====
Acq. Operator   : SYSTEM                               Seq. Line :    4
Acq. Instrument : BMV_NEW_GC_7820                     Location  : Vial 104
Injection Date  : 7/3/2018 1:00:47 PM                 Inj       :    1
                                                    Inj Volume: 0.5 µl

Acq. Method    : C:\CHEM32\2\DATA\03072018 2018-07-03 09-33-23\UNIVERSAL F.M
Last changed   : 7/3/2018 9:33:29 AM by SYSTEM
Analysis Method: C:\CHEM32\2\DATA\01072018 2018-07-02 09-50-17\UNIVERSAL F.M (Sequence
Method)
Last changed   : 7/3/2018 2:21:40 PM by SYSTEM
                (modified after loading)

Additional Info : Peak(s) manually integrated
  
```



=====
 Area Percent Report
 =====

```

Sorted By      :      Signal
Multiplier     :      1.0000
Dilution       :      1.0000
Do not use Multiplier & Dilution Factor with ISTDs
  
```

Signal 1: FID1 A, Front Signal

Peak #	RetTime [min]	Type	Width [min]	Area [pA*s]	Height [pA]	Area %
1	10.098	BB	0.0431	73.98080	27.72097	0.24164
2	13.149	BB	0.0789	112.59663	22.31723	0.36777
3	13.704	BV	0.0548	86.60780	22.53691	0.28288
4	13.849	VB	0.0515	67.90327	20.05543	0.22179
5	19.517	BB	0.0585	31.11133	8.15514	0.10162
6	22.377	BB	0.0457	10.10832	3.50027	0.03302

Peak #	RetTime [min]	Type	Width [min]	Area [pA*s]	Height [pA]	Area %
7	23.100	BB	0.0526	262.94232	83.72441	0.85884
8	23.464	BB	0.0970	64.86974	9.58138	0.21188
9	24.244	BB	0.0858	233.64137	36.91594	0.76313
10	24.497	BV	0.0950	238.26985	34.29993	0.77825
11	24.759	VV	0.0587	1358.71497	371.09189	4.43792
12	24.980	VV	0.0645	1606.18164	386.04761	5.24621
13	25.174	VV	0.0686	73.74770	15.77118	0.24088
14	25.281	VB	0.0581	69.87788	17.70273	0.22824
15	25.699	BV	0.0658	1947.33386	475.75165	6.36050
16	25.851	VV	0.0725	68.28183	13.62673	0.22303
17	26.135	VV	0.0977	3236.01245	440.35904	10.56965
18	26.336	VV	0.0975	114.81147	19.28321	0.37500
19	26.478	VV	0.1083	111.85599	15.85514	0.36535
20	26.767	VB	0.0582	836.70398	220.76579	2.73289
21	27.047	BV	0.0647	41.44583	9.92615	0.13537
22	27.303	VV	0.0801	216.28207	43.45461	0.70643
23	27.485	VB	0.0671	2856.24609	651.79724	9.32924
24	27.759	BV	0.0695	98.72162	20.01646	0.32245
25	28.081	VB	0.1061	55.20885	6.99038	0.18033
26	28.477	BV	0.0773	923.05103	164.79892	3.01492
27	28.674	VV	0.0569	505.22464	144.06496	1.65019
28	28.813	VV	0.0860	726.90344	136.67973	2.37425
29	29.044	VV	0.0589	114.80738	29.82026	0.37499
30	29.272	VB	0.0878	198.44792	31.39115	0.64818
31	29.772	BV	0.0766	555.47266	110.54293	1.81432
32	30.013	VB	0.0900	5553.46826	875.76129	18.13907
33	30.497	BV	0.0620	295.43671	71.74828	0.96497
34	30.636	VB	0.0587	976.33179	254.74985	3.18895
35	30.819	BV	0.0626	70.51137	16.92396	0.23031
36	31.036	VB	0.0739	1860.13342	402.62064	6.07568
37	31.533	BB	0.0875	77.53326	12.65572	0.25324
38	32.079	BB	0.0789	41.73957	7.27957	0.13633
39	32.304	BV	0.0670	118.86259	28.28872	0.38824
40	32.500	VV	0.1003	368.59671	57.87575	1.20393
41	32.651	VV	0.0596	307.05017	78.51005	1.00291
42	32.778	VB	0.0977	489.77173	75.46616	1.59972
43	33.123	BV	0.0946	148.34048	24.53029	0.48452
44	33.309	VV	0.0650	529.70911	121.12196	1.73017
45	33.519	VV	0.0751	1281.26697	244.63304	4.18495
46	33.769	VV	0.0572	54.90022	14.83837	0.17932
47	33.919	VV	0.0682	113.72344	25.43679	0.37145
48	34.093	VB	0.0572	1345.00659	381.28558	4.39314
49	35.097	BB	0.0687	67.05710	14.84656	0.21903
50	35.369	BB	0.0482	19.26124	6.56951	0.06291

Totals : 3.06161e4 6309.68743

*** End of Report ***