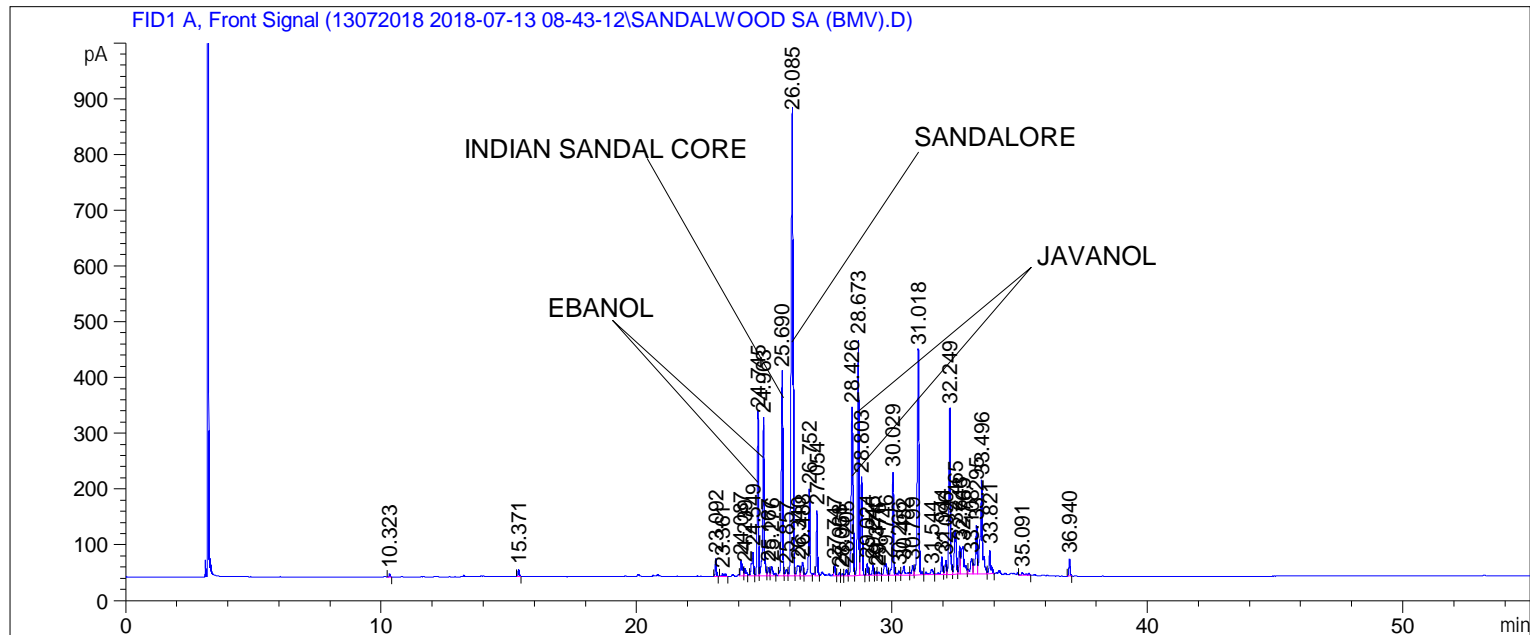


Sample Name: SANDALWOOD SA (BMV)

```

=====
Acq. Operator   : SYSTEM                               Seq. Line :    5
Acq. Instrument : BMV_NEW_GC_7820                     Location  : Vial 105
Injection Date  : 7/13/2018 1:29:15 PM                Inj       :    1
                                                    Inj Volume: 0.5 µl

Acq. Method    : C:\CHEM32\2\DATA\13072018 2018-07-13 08-43-12\UNIVERSAL BMV.M
Last changed   : 7/13/2018 8:43:19 AM by SYSTEM
Analysis Method: C:\CHEM32\2\DATA\13072018 2018-07-13 08-43-12\UNIVERSAL BMV.M (Sequence
Method)
Last changed   : 7/16/2018 11:50:15 AM by SYSTEM
                (modified after loading)
Additional Info : Peak(s) manually integrated
=====
    
```



Area Percent Report

```

Sorted By      :      Signal
Multiplier     :      1.0000
Dilution       :      1.0000
Do not use Multiplier & Dilution Factor with ISTDs
    
```

Signal 1: FID1 A, Front Signal

Peak #	RetTime [min]	Type	Width [min]	Area [pA*s]	Height [pA]	Area %
1	10.323	BB	0.0469	15.05929	5.33776	0.06970
2	15.371	BB	0.0509	41.72933	13.21045	0.19315
3	23.092	BB	0.0503	99.41445	31.92745	0.46015
4	23.361	BB	0.1045	42.16588	5.31902	0.19517
5	24.087	BV	0.0752	146.70744	27.97908	0.67905
6	24.239	VB	0.0617	60.40354	13.62275	0.27958
7	24.549	BV	0.0729	220.11723	42.17201	1.01883
8	24.745	VV	0.0571	1025.63110	290.94940	4.74722
9	24.963	VV	0.0617	1155.08276	282.24518	5.34640
10	25.167	VV	0.0689	69.04140	15.23573	0.31956

Sample Name: SANDALWOOD SA (BMV)

```

=====
Acq. Operator   : SYSTEM                               Seq. Line :    5
Acq. Instrument : BMV_NEW_GC_7820                       Location  : Vial 105
Injection Date  : 7/13/2018 1:29:15 PM                 Inj       :    1
                                                    Inj Volume: 0.5 µl

Acq. Method     : C:\CHEM32\2\DATA\13072018 2018-07-13 08-43-12\UNIVERSAL BMV.M
Last changed    : 7/13/2018 8:43:19 AM by SYSTEM
Analysis Method : C:\CHEM32\2\DATA\13072018 2018-07-13 08-43-12\UNIVERSAL BMV.M (Sequence
Method)
Last changed    : 7/16/2018 11:50:15 AM by SYSTEM
                  (modified after loading)
Additional Info  : Peak(s) manually integrated
=====
    
```

Peak #	RetTime [min]	Type	Width [min]	Area [pA*s]	Height [pA]	Area %
11	25.276	VB	0.0780	93.27324	16.49876	0.43172
12	25.690	BV	0.0602	1376.27954	363.25214	6.37023
13	25.857	VV	0.0857	64.31537	11.07878	0.29769
14	26.085	VV	0.0848	4444.56885	825.29224	20.57208
15	26.340	VV	0.0989	135.04097	18.12989	0.62505
16	26.488	VV	0.0797	122.74551	23.99036	0.56814
17	26.752	VB	0.0566	558.44830	153.07373	2.58483
18	27.054	BB	0.0515	374.44962	116.42146	1.73317
19	27.747	BB	0.0500	66.48296	20.42123	0.30772
20	27.938	BV	0.0640	23.22263	5.64059	0.10749
21	28.051	VV	0.0448	10.72807	3.81674	0.04966
22	28.205	VV	0.0695	50.30115	10.57774	0.23282
23	28.426	VV	0.0736	1477.92590	299.13083	6.84071
24	28.673	VV	0.0588	1554.06421	423.29498	7.19312
25	28.803	VB	0.0741	805.61407	173.75616	3.72886
26	29.024	BB	0.0574	79.16180	21.30315	0.36641
27	29.245	BV	0.0608	69.59509	18.12216	0.32213
28	29.374	VV	0.0581	26.38877	6.68141	0.12214
29	29.476	VV	0.0741	33.44560	6.27840	0.15481
30	29.746	VV	0.0992	153.94624	21.07266	0.71255
31	30.029	VB	0.0555	654.17883	183.99913	3.02792
32	30.266	BV	0.0799	41.14952	7.28917	0.19046
33	30.452	VB	0.0985	113.25526	15.63230	0.52421
34	30.799	BV	0.0726	82.13728	16.35729	0.38018
35	31.018	VB	0.0754	1907.36646	401.68265	8.82841
36	31.544	BV	0.1386	85.61507	9.19686	0.39628
37	31.944	VV	0.0668	142.45584	31.45139	0.65937
38	32.096	VV	0.0634	103.28988	25.39791	0.47809
39	32.249	VV	0.0604	1126.41772	295.75711	5.21372
40	32.465	VV	0.0916	449.91672	79.96021	2.08248
41	32.643	VV	0.0594	199.96774	51.39755	0.92557
42	32.765	VB	0.1215	400.95486	48.98196	1.85586
43	33.108	BV	0.1071	195.08026	27.39535	0.90295
44	33.295	VV	0.0664	388.47504	86.46294	1.79809
45	33.496	VV	0.0831	988.81024	166.85541	4.57680
46	33.821	VB	0.0664	188.91341	42.06662	0.87440
47	35.091	BB	0.1391	42.58850	4.03779	0.19712
48	36.940	BB	0.0541	98.93444	30.32480	0.45793

Totals : 2.16049e4 4790.07869

Sample Name: SANDALWOOD SA (BMV)

```
=====
Acq. Operator   : SYSTEM                               Seq. Line :    5
Acq. Instrument : BMV_NEW_GC_7820                     Location  : Vial 105
Injection Date  : 7/13/2018 1:29:15 PM                 Inj       :    1
                                                    Inj Volume: 0.5 µl

Acq. Method     : C:\CHEM32\2\DATA\13072018 2018-07-13 08-43-12\UNIVERSAL BMV.M
Last changed    : 7/13/2018 8:43:19 AM by SYSTEM
Analysis Method : C:\CHEM32\2\DATA\13072018 2018-07-13 08-43-12\UNIVERSAL BMV.M (Sequence
Method)
Last changed    : 7/16/2018 11:50:15 AM by SYSTEM
                  (modified after loading)
Additional Info : Peak(s) manually integrated
=====
```

```
=====
*** End of Report ***
```