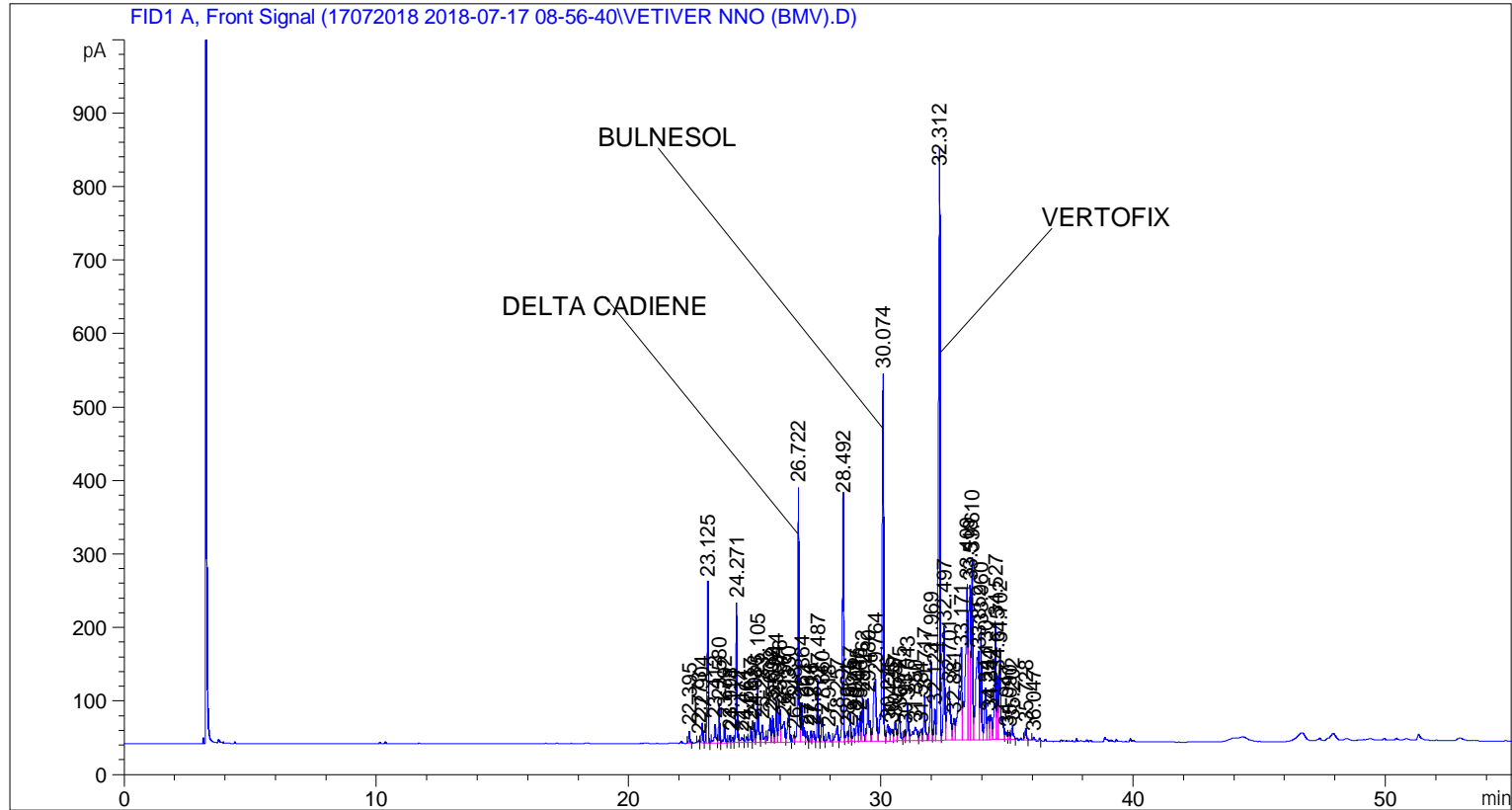


```

=====
Acq. Operator   : SYSTEM                               Seq. Line :    4
Acq. Instrument : BMV_NEW_GC_7820                     Location  : Vial 104
Injection Date  : 7/17/2018 12:31:00 PM              Inj       :    1
                                                    Inj Volume: 0.5 µl

Acq. Method     : C:\CHEM32\2\DATA\17072018 2018-07-17 08-56-40\UNIVERSAL BMV.M
Last changed    : 7/17/2018 8:56:46 AM by SYSTEM
Analysis Method : C:\CHEM32\2\DATA\17072018 2018-07-17 08-56-40\UNIVERSAL BMV.M (Sequence
Method)
Last changed    : 7/21/2018 12:15:36 PM by SYSTEM
                  (modified after loading)
Additional Info  : Peak(s) manually integrated
  
```



Sample Name: VETIVER NNO (BMV)

Peak #	RetTime [min]	Type	Width [min]	Area [pA*s]	Height [pA]	Area %
7	23.792	VB	0.0585	96.71911	25.33556	0.35729
8	23.998	BV	0.0533	33.58073	9.98037	0.12405
9	24.114	VV	0.0574	28.47437	8.02968	0.10519
10	24.271	VB	0.0522	620.87164	189.54694	2.29357
11	24.474	BV	0.0891	48.70383	7.36870	0.17992
12	24.661	VV	0.0703	37.86254	8.14028	0.13987
13	24.837	VV	0.0598	89.30043	22.76392	0.32989
14	24.983	VV	0.0615	104.62206	26.81521	0.38648
15	25.105	VV	0.0595	325.64359	83.55264	1.20296
16	25.283	VB	0.0748	119.30656	23.67170	0.44073
17	25.602	BV	0.0755	175.14049	33.22322	0.64699
18	25.698	VV	0.0581	138.64909	36.66634	0.51218
19	25.844	VV	0.0583	212.02832	55.80436	0.78326
20	25.976	VV	0.0685	210.61395	46.80724	0.77803
21	26.156	VV	0.1128	232.28896	27.99448	0.85810
22	26.330	VV	0.0816	222.48981	39.55939	0.82190
23	26.548	VV	0.0669	44.74785	10.25130	0.16530
24	26.722	VV	0.0564	1258.06628	345.84219	4.64743
25	26.864	VV	0.0658	244.75836	53.09736	0.90416
26	27.064	VV	0.0546	50.82152	13.93114	0.18774
27	27.216	VV	0.0541	54.41291	15.09084	0.20101
28	27.331	VV	0.0637	61.67916	14.49041	0.22785
29	27.487	VV	0.0533	264.08051	82.57110	0.97554
30	27.660	VB	0.0677	137.12129	32.19607	0.50654
31	27.918	BB	0.0766	65.79421	12.66773	0.24305
32	28.257	BV	0.0871	136.57704	21.79775	0.50453
33	28.492	VV	0.0568	1212.70081	330.95032	4.47985
34	28.664	VV	0.0778	72.60463	13.28242	0.26821
35	28.767	VV	0.0606	141.61559	37.05870	0.52314
36	28.929	VV	0.0609	77.24805	18.43982	0.28536
37	29.045	VV	0.0707	161.44888	34.45140	0.59641
38	29.166	VV	0.0554	121.74806	34.27912	0.44975
39	29.262	VB	0.0612	240.82985	59.53699	0.88965
40	29.480	BV	0.0874	356.97729	58.31193	1.31871
41	29.764	VV	0.1058	656.26025	83.40874	2.42429
42	30.074	VV	0.0639	2053.84863	500.15411	7.58713
43	30.276	VV	0.1037	153.17761	22.43193	0.56585
44	30.425	VV	0.0828	85.58319	15.89309	0.31615
45	30.557	VV	0.0881	149.85558	26.46156	0.55358
46	30.725	VB	0.0770	183.40889	36.24145	0.67753
47	30.937	BV	0.0610	59.77312	14.84994	0.22081
48	31.043	VV	0.0661	224.92528	50.37790	0.83090
49	31.350	VV	0.1545	216.42506	17.97116	0.79950
50	31.584	VV	0.0914	93.19494	15.66804	0.34427
51	31.717	VB	0.0660	277.19394	62.14611	1.02398
52	31.969	BV	0.0589	421.98340	109.57419	1.55885
53	32.124	VV	0.0576	157.68327	42.21034	0.58250
54	32.312	VV	0.0653	3401.11255	772.88501	12.56407
55	32.497	VV	0.0624	641.85577	154.72585	2.37108
56	32.701	VV	0.1161	634.05841	72.41767	2.34228
57	32.881	VV	0.0812	167.65239	29.09027	0.61933
58	33.171	VV	0.1247	1165.61304	120.71452	4.30590
59	33.409	VV	0.0961	1445.68884	210.62932	5.34053
60	33.518	VV	0.0871	1160.50854	207.90651	4.28704

Peak #	RetTime [min]	Type	Width [min]	Area [pA*s]	Height [pA]	Area %
61	33.610	VV	0.0586	947.60547	247.82201	3.50055
62	33.852	VV	0.1186	1073.69568	117.53500	3.96635
63	33.960	VV	0.0620	590.00702	149.64777	2.17955
64	34.130	VV	0.0679	311.54724	70.02695	1.15089
65	34.254	VV	0.0709	154.38655	31.66092	0.57032
66	34.342	VV	0.0928	197.81236	33.53024	0.73074
67	34.527	VV	0.0604	667.83685	160.83037	2.46706
68	34.615	VV	0.0509	302.58984	86.28606	1.11780
69	34.702	VV	0.0778	676.69275	123.71246	2.49977
70	34.947	VV	0.0698	53.08775	10.70875	0.19611
71	35.090	VV	0.0672	45.21103	9.90876	0.16701
72	35.202	VB	0.0659	85.01354	19.11531	0.31405
73	35.728	BB	0.0630	64.51450	15.99901	0.23832
74	36.047	BB	0.0777	25.06083	4.45057	0.09258

Totals : 2.70702e4 5821.59977

=====
*** End of Report ***