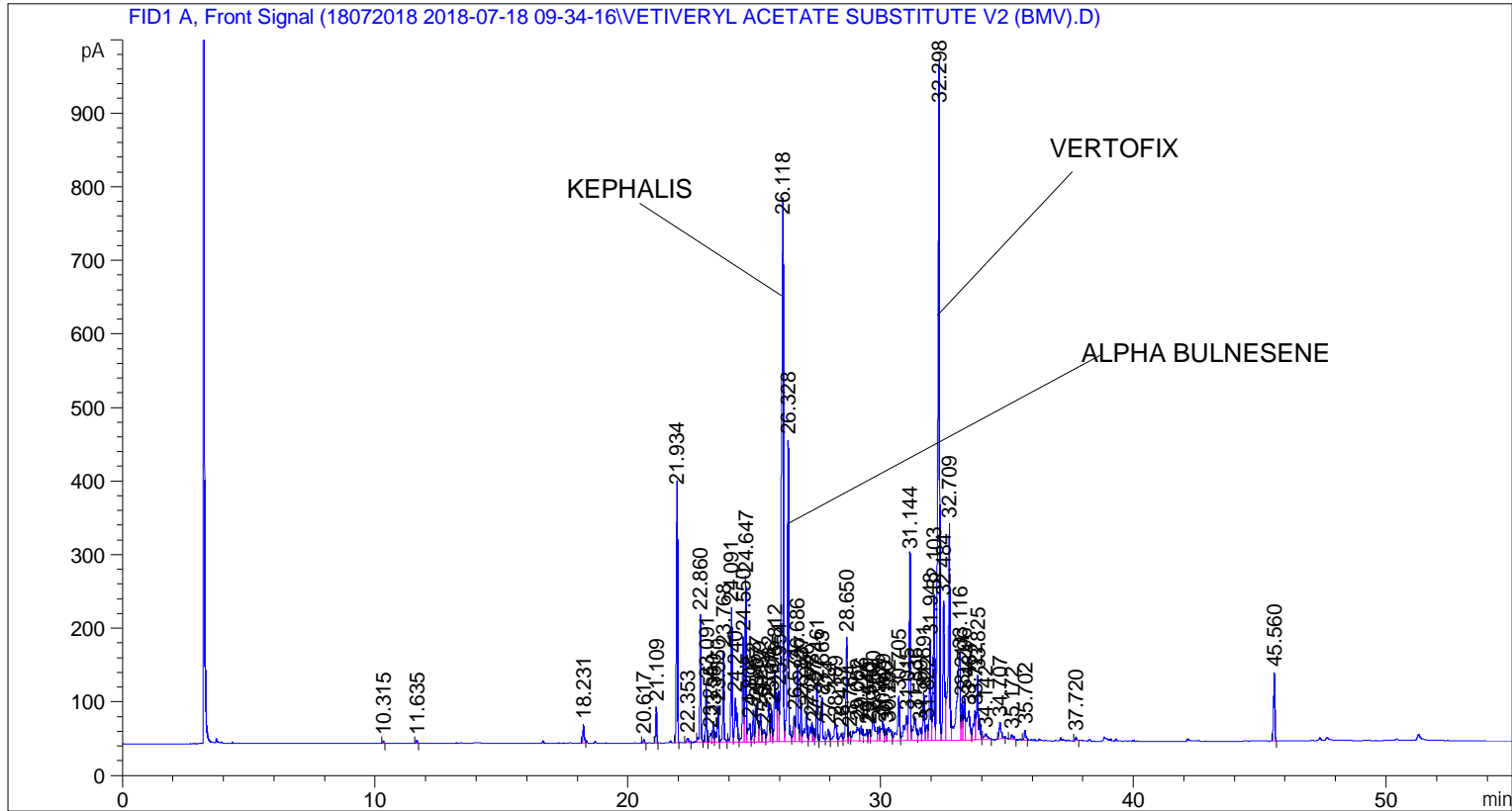


```

=====
Acq. Operator   : SYSTEM                               Seq. Line :    1
Acq. Instrument : BMV_NEW_GC_7820                     Location  : Vial 101
Injection Date  : 7/18/2018 9:48:24 AM                Inj       :    1
                                                    Inj Volume: 0.5 µl

Acq. Method    : C:\CHEM32\2\DATA\18072018 2018-07-18 09-34-16\UNIVERSAL BMV.M
Last changed   : 7/18/2018 9:34:21 AM by SYSTEM
Analysis Method: C:\CHEM32\2\DATA\18072018 2018-07-18 09-34-16\UNIVERSAL BMV.M (Sequence
Method)
Last changed   : 7/21/2018 12:24:16 PM by SYSTEM
                (modified after loading)
Additional Info : Peak(s) manually integrated
  
```



=====
 Area Percent Report
 =====

```

Sorted By      :      Signal
Multiplier     :      1.0000
Dilution       :      1.0000
Do not use Multiplier & Dilution Factor with ISTDs
  
```

Signal 1: FID1 A, Front Signal

Peak #	RetTime [min]	Type	Width [min]	Area [pA*s]	Height [pA]	Area %
1	10.315	BB	0.0426	10.42556	3.72874	0.03485
2	11.635	BB	0.0453	13.56472	4.75400	0.04535
3	18.231	BB	0.0545	87.17195	25.13335	0.29141
4	20.617	BB	0.0515	14.99964	4.67090	0.05014
5	21.109	BB	0.0498	151.05406	49.21204	0.50497
6	21.934	BB	0.0509	1085.22961	343.54080	3.62788

Peak #	RetTime [min]	Type	Width [min]	Area [pA*s]	Height [pA]	Area %
7	22.353	BB	0.0810	31.59095	6.03906	0.10561
8	22.860	BB	0.0534	582.19006	172.40053	1.94624
9	23.091	BV	0.0505	248.84058	79.50703	0.83186
10	23.255	VV	0.0801	67.80639	11.97519	0.22667
11	23.380	VV	0.0523	97.05032	28.06537	0.32443
12	23.550	VV	0.0596	190.47650	48.75592	0.63675
13	23.768	VB	0.0533	415.83533	123.53940	1.39012
14	24.091	BV	0.0547	636.12146	182.48015	2.12653
15	24.240	VV	0.0805	340.36853	59.69223	1.13784
16	24.550	VV	0.0545	497.04089	143.09238	1.66159
17	24.647	VV	0.0528	740.88770	222.69681	2.47676
18	24.808	VV	0.0841	149.51390	24.89975	0.49982
19	24.953	VV	0.0605	165.16478	43.27031	0.55214
20	25.077	VV	0.0806	296.41183	51.88517	0.99089
21	25.237	VV	0.0668	175.17746	38.68414	0.58561
22	25.371	VV	0.0864	108.77094	17.04757	0.36362
23	25.562	VV	0.0747	255.82352	50.85144	0.85521
24	25.676	VV	0.0571	166.15378	44.93758	0.55544
25	25.812	VV	0.0866	570.05273	94.19624	1.90566
26	25.954	VV	0.0533	243.77086	68.79523	0.81492
27	26.118	VV	0.0722	3657.74121	708.74377	12.22767
28	26.328	VV	0.0588	1575.97327	410.02158	5.26841
29	26.574	VV	0.0787	179.00388	35.58868	0.59840
30	26.686	VV	0.0665	443.94479	102.60384	1.48409
31	26.837	VV	0.0536	175.26411	51.63917	0.58590
32	27.056	VV	0.0911	254.59528	40.63196	0.85110
33	27.273	VV	0.0868	170.85133	26.65800	0.57115
34	27.357	VV	0.0461	54.86791	17.74187	0.18342
35	27.461	VV	0.0541	246.84456	75.50898	0.82519
36	27.663	VB	0.0783	283.01022	58.69826	0.94609
37	27.924	BV	0.0787	85.43879	16.43455	0.28562
38	28.189	VV	0.0972	177.29204	24.28505	0.59268
39	28.437	VV	0.0907	71.22852	10.83211	0.23811
40	28.650	VV	0.0581	530.77563	140.52968	1.77436
41	28.764	VV	0.0646	51.80885	11.48744	0.17319
42	29.062	VV	0.1705	255.00360	18.77579	0.85247
43	29.226	VV	0.0728	102.78635	20.37900	0.34361
44	29.445	VV	0.0888	99.73919	15.15998	0.33342
45	29.540	VV	0.0676	68.55842	15.50286	0.22919
46	29.690	VV	0.1313	270.77054	30.00445	0.90517
47	29.925	VV	0.0663	83.18630	18.57236	0.27809
48	30.079	VV	0.0931	175.87196	26.61584	0.58793
49	30.190	VV	0.0621	65.45268	15.86140	0.21881
50	30.292	VV	0.1267	173.34436	17.94716	0.57948
51	30.705	VV	0.0861	350.46964	60.06118	1.17160
52	31.015	VV	0.1125	279.20456	33.74210	0.93337
53	31.144	VV	0.0552	893.10608	252.96077	2.98561
54	31.336	VV	0.1093	265.51181	33.20980	0.88759
55	31.559	VV	0.0891	104.31785	17.61799	0.34873
56	31.691	VV	0.0621	267.18723	64.75601	0.89320
57	31.822	VV	0.0678	98.00385	20.48850	0.32762
58	31.948	VV	0.0597	529.60883	135.19449	1.77046
59	32.103	VV	0.0613	763.56525	196.84999	2.55257
60	32.298	VV	0.0686	4186.74268	894.63477	13.99610

Peak #	RetTime [min]	Type	Width [min]	Area [pA*s]	Height [pA]	Area %
61	32.484	VV	0.0711	923.26581	188.57887	3.08644
62	32.709	VV	0.0704	1421.07056	293.96182	4.75058
63	33.116	VV	0.1377	1110.74597	115.98766	3.71318
64	33.211	VV	0.0552	190.62665	51.43477	0.63726
65	33.296	VV	0.0600	237.25858	60.14341	0.79315
66	33.484	VV	0.1220	364.80914	39.40548	1.21954
67	33.722	VV	0.0826	239.03574	39.49222	0.79909
68	33.825	VB	0.0730	440.35535	87.06613	1.47209
69	34.142	BB	0.1316	83.25559	8.40207	0.27832
70	34.707	BB	0.0803	125.52315	22.07960	0.41962
71	35.172	BB	0.0828	32.90570	5.74649	0.11000
72	35.702	BB	0.0663	60.49157	14.04291	0.20222
73	37.720	BB	0.0585	18.95529	5.20182	0.06337
74	45.560	BB	0.0575	332.77652	93.45367	1.11246

Totals : 2.99136e4 6588.58760

=====
*** End of Report ***