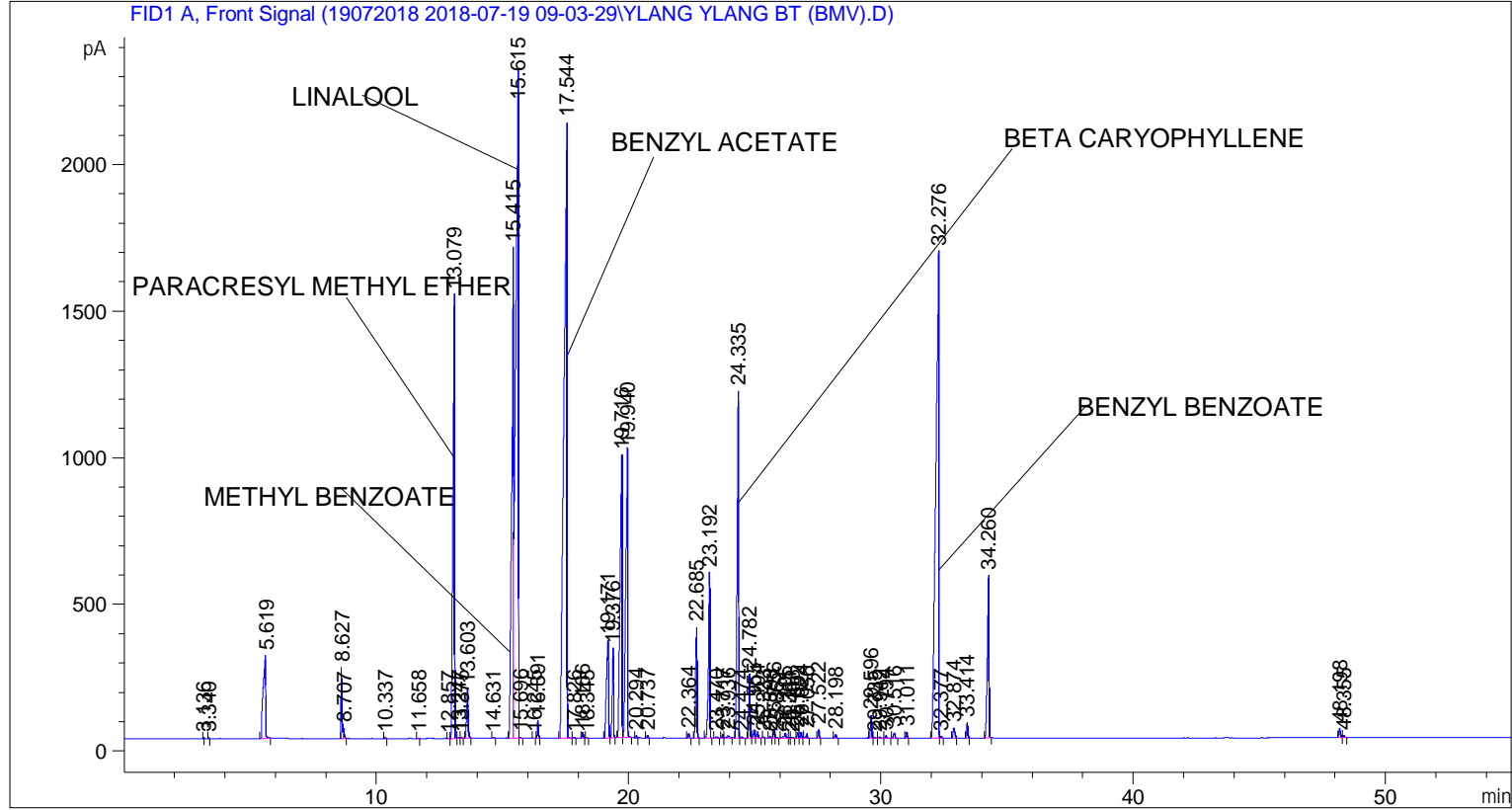


```

=====
Acq. Operator   : SYSTEM                               Seq. Line :    1
Acq. Instrument : BMV_NEW_GC_7820                     Location  : Vial 101
Injection Date  : 7/19/2018 9:15:54 AM                Inj       :    1
                                                    Inj Volume: 0.5 µl

Method          : C:\CHEM32\2\DATA\19072018 2018-07-19 09-03-29\UNIVERSAL BMV.M (Sequence
                  Method)
Last changed    : 7/19/2018 9:03:36 AM by SYSTEM
  
```



=====
 Area Percent Report
 =====

```

Sorted By       : Signal
Multiplier      : 1.0000
Dilution        : 1.0000
Do not use Multiplier & Dilution Factor with ISTDs
  
```

Signal 1: FID1 A, Front Signal

Peak #	RetTime [min]	Type	Width [min]	Area [pA*s]	Height [pA]	Area %
1	3.136	BB	0.0239	6.86440	4.24505	0.00729
2	3.340	BB	0.0250	4.77585	2.77965	0.00507
3	5.619	BB	0.0900	1951.04468	281.06448	2.07310
4	8.627	BV	0.0381	603.02832	241.73973	0.64075
5	8.707	VB	0.0453	108.52042	34.84543	0.11531
6	10.337	BB	0.0431	8.38779	3.04680	0.00891
7	11.658	BB	0.0437	7.30467	2.60619	0.00776
8	12.857	BV	0.0431	5.88601	2.07480	0.00625
9	13.079	VB	0.0617	6962.90967	1512.73132	7.39850
10	13.247	BB	0.0474	11.57440	3.61101	0.01230

Sample Name: YLANG YLANG BT (BMV)

Peak #	RetTime [min]	Type	Width [min]	Area [pA*s]	Height [pA]	Area %
11	13.375	BB	0.0450	7.10227	2.51344	0.00755
12	13.603	BB	0.0654	717.30573	169.23846	0.76218
13	14.631	BB	0.0554	11.59807	3.11551	0.01232
14	15.415	BV	0.0633	8206.75293	1671.70142	8.72016
15	15.615	VV	0.0950	1.71565e4	2275.15576	18.22982
16	15.696	VB	0.0538	13.17437	3.76474	0.01400
17	16.245	BB	0.0443	5.47982	1.91996	0.00582
18	16.391	BB	0.0459	175.80127	60.50854	0.18680
19	17.544	BB	0.1035	1.79115e4	2100.83594	19.03205
20	17.826	BB	0.0523	9.74011	2.75409	0.01035
21	18.166	BB	0.0490	66.69520	21.03039	0.07087
22	18.345	BB	0.0417	4.90743	1.80536	0.00521
23	19.171	BV	0.0795	1958.11145	333.62366	2.08061
24	19.376	VB	0.0481	1022.93231	305.25208	1.08693
25	19.716	BV	0.0694	5139.80273	961.68994	5.46134
26	19.940	VB	0.0662	5065.00537	982.32172	5.38187
27	20.294	BB	0.0443	19.16108	6.92611	0.02036
28	20.737	BB	0.0451	26.57586	9.35331	0.02824
29	22.364	BB	0.0560	58.29309	16.18359	0.06194
30	22.685	BB	0.0563	1530.54419	377.67685	1.62629
31	23.192	BB	0.0554	2154.61084	565.91693	2.28940
32	23.470	BB	0.0692	23.27702	4.66623	0.02473
33	23.717	BV	0.0438	36.89700	12.74076	0.03921
34	23.936	VB	0.0827	53.71098	8.99142	0.05707
35	24.335	BV	0.0554	4804.08301	1182.81519	5.10462
36	24.474	VB	0.0365	7.36780	3.81872	0.00783
37	24.782	BB	0.0462	676.72815	218.14824	0.71906
38	24.955	BV	0.0550	94.49088	26.24744	0.10040
39	25.104	VB	0.0555	79.69067	21.36235	0.08468
40	25.333	BB	0.0465	9.80894	3.22010	0.01042
41	25.598	BB	0.0516	18.47330	5.17925	0.01963
42	25.756	BV	0.0491	95.95228	30.19441	0.10195
43	25.862	VB	0.0546	10.94627	3.06952	0.01163
44	26.195	BB	0.0785	98.77606	17.60301	0.10496
45	26.361	BV	0.0532	10.97716	3.26761	0.01166
46	26.488	VB	0.0635	13.50255	3.24893	0.01435
47	26.692	BV	0.0532	68.73541	19.93760	0.07304
48	26.824	VB	0.0500	75.14586	22.49905	0.07985
49	27.056	BB	0.0599	61.13131	14.88734	0.06496
50	27.522	BB	0.0500	97.57506	30.78828	0.10368
51	28.198	BB	0.0591	49.50219	12.25192	0.05260
52	29.596	BB	0.0491	236.51826	76.35000	0.25131
53	29.735	BB	0.0527	9.72058	2.78956	0.01033
54	29.942	BB	0.0499	13.06773	4.02040	0.01389
55	30.194	BB	0.0521	28.28475	8.44701	0.03005
56	30.516	BB	0.0721	75.90899	17.67015	0.08066
57	31.011	BB	0.0516	70.69398	21.38853	0.07512
58	32.276	BV	0.0988	1.33294e4	1658.17419	14.16327
59	32.377	VB	0.0529	23.89878	6.82533	0.02539
60	32.874	BB	0.0700	170.69431	34.92010	0.18137
61	33.414	BB	0.0511	177.07854	54.24928	0.18816
62	34.260	BB	0.0625	2492.76465	554.35486	2.64871
63	48.198	BV	0.0669	137.45738	31.49673	0.14606
64	48.355	VB	0.0689	28.24149	6.22735	0.03001

Sample Name: YLANG YLANG BT (BMV)

Peak #	RetTime [min]	Type	Width [min]	Area [pA*s]	Height [pA]	Area %
----- ----- ----- ----- ----- ----- -----						
Totals :				9.41125e4	1.60839e4	

=====
*** End of Report ***