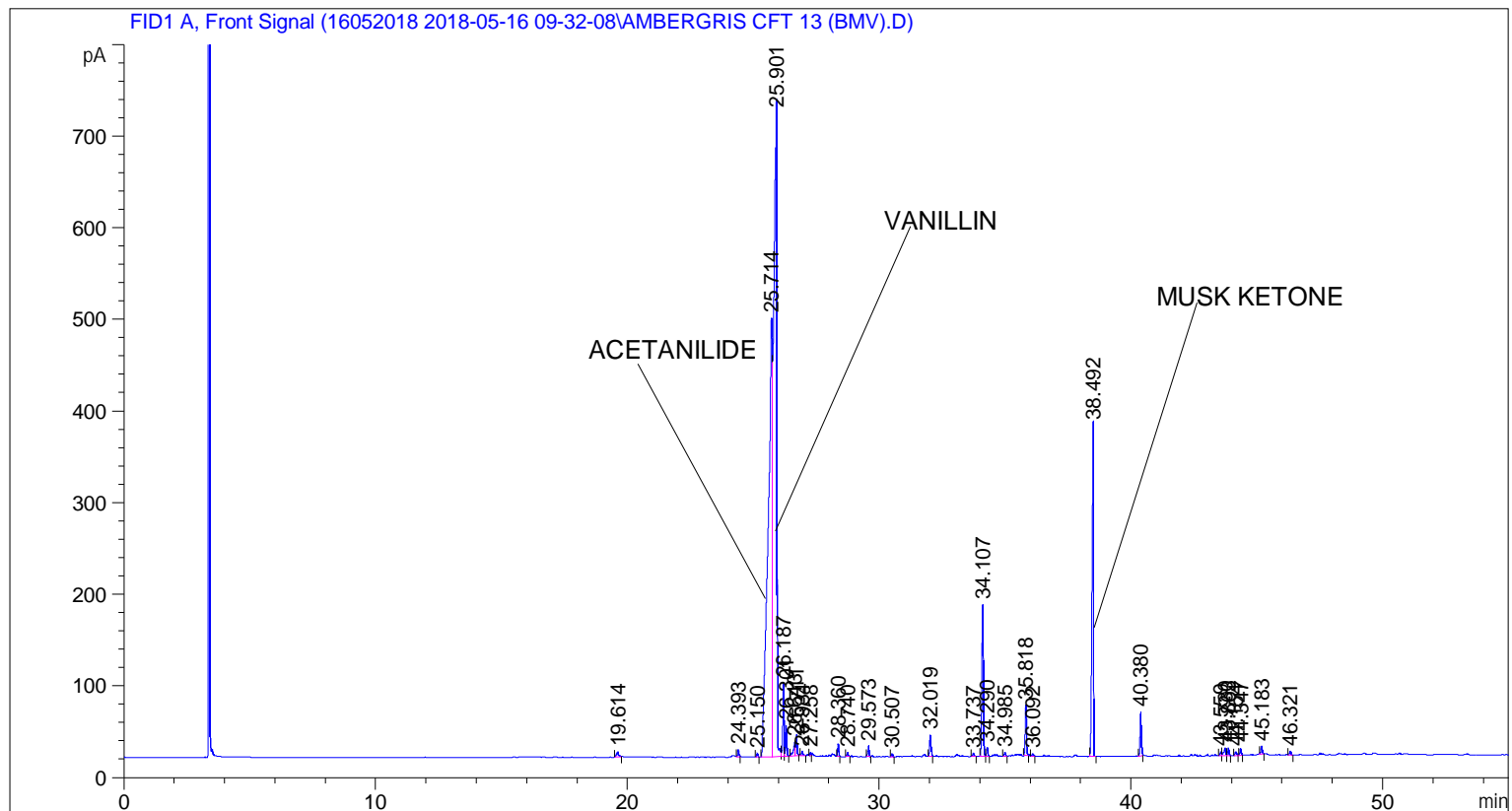


```

=====
Acq. Operator   : SYSTEM                               Seq. Line :    4
Acq. Instrument : BMV_NEW_GC_7820                     Location  : Vial 104
Injection Date  : 5/16/2018 1:26:58 PM                Inj       :    1
                                                    Inj Volume: 0.5 µl

Acq. Method     : C:\CHEM32\2\DATA\16052018 2018-05-16 09-32-08\UNIVERSAL F.M
Last changed    : 5/16/2018 9:32:13 AM by SYSTEM
Analysis Method : C:\CHEM32\2\DATA\16052018 2018-05-16 09-32-08\UNIVERSAL F.M (Sequence
Method)
Last changed    : 5/29/2018 12:57:01 PM by SYSTEM
                  (modified after loading)

Additional Info  : Peak(s) manually integrated
  
```



=====
 Area Percent Report
 =====

```

Sorted By      :      Signal
Multiplier     :      1.0000
Dilution      :      1.0000
Do not use Multiplier & Dilution Factor with ISTDs
  
```

Signal 1: FID1 A, Front Signal

Peak #	RetTime [min]	Type	Width [min]	Area [pA*s]	Height [pA]	Area %
1	19.614	BB	0.0820	31.86739	5.62924	0.20761
2	24.393	BB	0.0537	27.64796	7.74091	0.18012
3	25.150	BB	0.0501	13.24802	4.27740	0.08631
4	25.714	BV	0.1486	5601.86670	478.50015	36.49428
5	25.901	VV	0.1077	6061.14941	709.16461	39.48635
6	26.187	VV	0.0484	249.60536	80.05569	1.62609

Peak #	RetTime [min]	Type	Width [min]	Area [pA*s]	Height [pA]	Area %
7	26.301	VB	0.0502	110.48837	33.77129	0.71979
8	26.643	BV	0.0776	84.02366	15.42142	0.54739
9	26.711	VB	0.0524	78.52905	22.67990	0.51159
10	26.934	BB	0.0602	19.68114	4.76243	0.12822
11	27.258	BV	0.0434	8.45369	3.14001	0.05507
12	28.360	BB	0.0486	42.35396	13.51850	0.27592
13	28.740	BB	0.0520	14.79303	4.31750	0.09637
14	29.573	BB	0.0525	39.63150	11.42683	0.25819
15	30.507	BB	0.0494	10.72285	3.34188	0.06986
16	32.019	BB	0.0591	91.28105	23.60223	0.59467
17	33.737	BB	0.0583	13.97631	3.51998	0.09105
18	34.107	BB	0.0672	698.13654	165.48416	4.54812
19	34.290	BB	0.0523	31.80457	9.69870	0.20720
20	34.985	BB	0.0550	14.91742	4.24818	0.09718
21	35.818	BB	0.0552	193.45509	54.76364	1.26029
22	36.092	BB	0.0535	8.86907	2.61851	0.05778
23	38.492	BB	0.0597	1536.47375	360.79666	10.00961
24	40.380	BB	0.0563	172.73163	47.65066	1.12529
25	43.559	BV	0.0651	16.76300	3.98463	0.10921
26	43.730	VV	0.0775	45.03667	8.27121	0.29340
27	43.863	VB	0.0575	31.64840	8.49361	0.20618
28	44.154	BB	0.0732	19.98252	4.07510	0.13018
29	44.347	BB	0.0572	28.81877	7.78581	0.18774
30	45.183	BB	0.0617	36.05672	8.82492	0.23490
31	46.321	BB	0.0582	15.97299	4.41220	0.10406

Totals : 1.53500e4 2115.97796

=====
*** End of Report ***