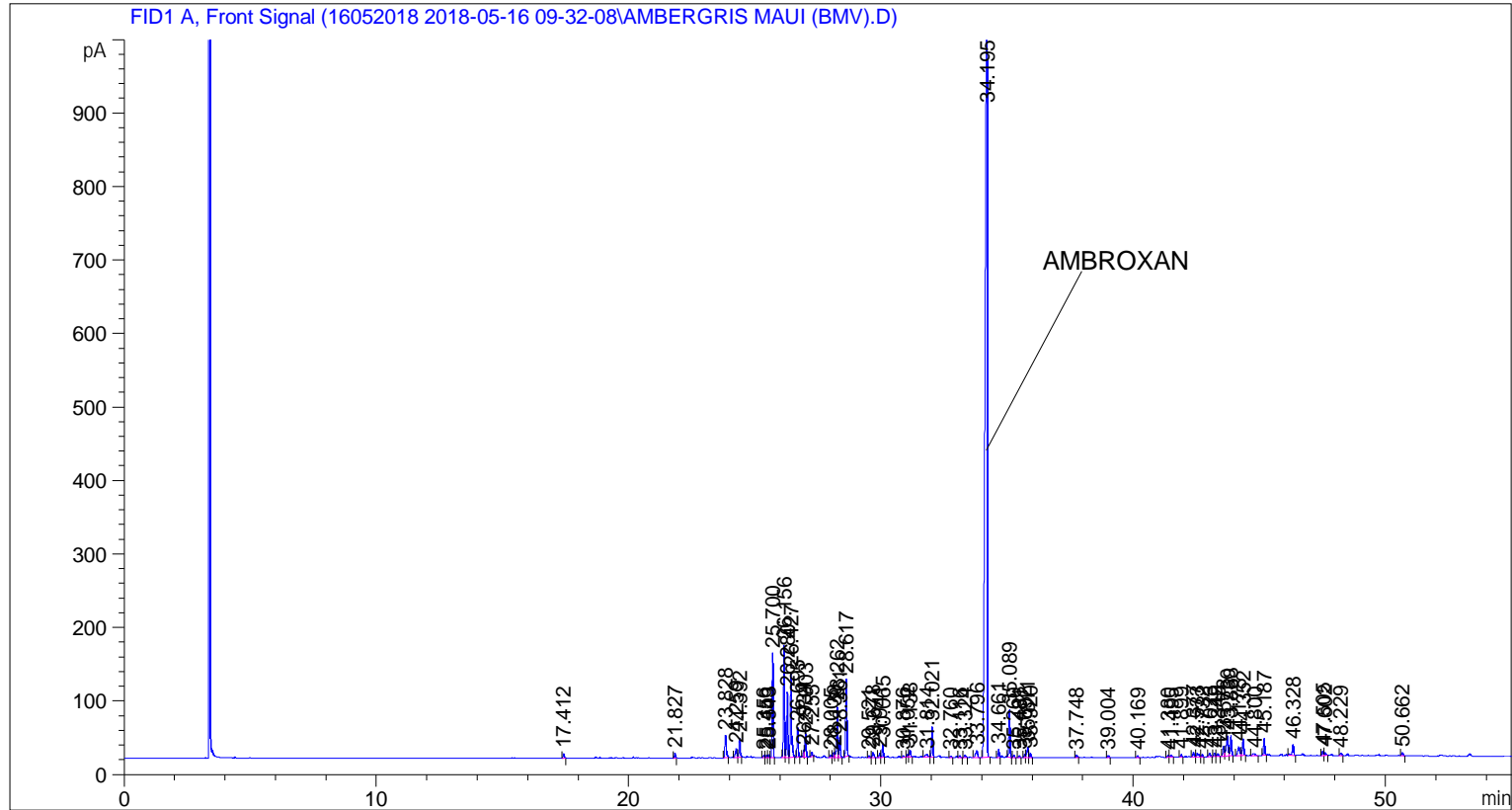


```

=====
Acq. Operator   : SYSTEM                               Seq. Line :    3
Acq. Instrument : BMV_NEW_GC_7820                     Location  : Vial 103
Injection Date  : 5/16/2018 12:15:03 PM                Inj       :    1
                                                    Inj Volume: 0.5 µl

Acq. Method     : C:\CHEM32\2\DATA\16052018 2018-05-16 09-32-08\UNIVERSAL F.M
Last changed    : 5/16/2018 9:32:13 AM by SYSTEM
Analysis Method : C:\CHEM32\2\DATA\16052018 2018-05-16 09-32-08\UNIVERSAL F.M (Sequence
Method)
Last changed    : 5/26/2018 10:45:39 AM by SYSTEM
                  (modified after loading)

Additional Info  : Peak(s) manually integrated
  
```



=====  
 Area Percent Report  
 =====

```

Sorted By      :      Signal
Multiplier     :      1.0000
Dilution       :      1.0000
Do not use Multiplier & Dilution Factor with ISTDs
  
```

Signal 1: FID1 A, Front Signal

Peak #	RetTime [min]	Type	Width [min]	Area [pA*s]	Height [pA]	Area %
1	17.412	BB	0.0488	18.26083	5.79353	0.16414
2	21.827	BB	0.0473	20.36888	6.72762	0.18309
3	23.828	BB	0.0590	120.42594	30.53667	1.08249
4	24.259	BV	0.0658	52.02737	11.95902	0.46767
5	24.392	VB	0.0499	85.58357	26.35553	0.76930
6	25.356	BV	0.0522	13.62361	4.05926	0.12246

Sample Name: AMBERGRIS MAUI (BMV)

Peak #	RetTime [min]	Type	Width [min]	Area [pA*s]	Height [pA]	Area %
7	25.459	VV	0.0462	10.68904	3.54617	0.09608
8	25.543	VV	0.0509	13.80732	4.24930	0.12411
9	25.700	VB	0.0467	434.78732	142.24881	3.90825
10	26.156	BV	0.0511	486.24936	153.05019	4.37083
11	26.280	VV	0.0497	288.79663	89.36451	2.59596
12	26.427	VB	0.0520	397.43457	115.79642	3.57249
13	26.695	BB	0.0509	131.05762	40.34314	1.17806
14	26.934	BV	0.0421	26.89790	9.76599	0.24178
15	27.003	VB	0.0485	110.65202	35.34197	0.99464
16	27.255	BB	0.0529	20.87755	5.95846	0.18767
17	28.005	BV	0.0566	9.94361	2.72431	0.08938
18	28.130	VV	0.0498	25.51945	7.47928	0.22939
19	28.262	VV	0.0498	224.48204	69.22166	2.01784
20	28.361	VB	0.0502	90.01104	27.47289	0.80910
21	28.617	BB	0.0498	332.45349	105.28231	2.98838
22	29.521	BB	0.0535	10.17515	2.93391	0.09146
23	29.678	BB	0.0630	31.57361	7.21615	0.28381
24	29.941	BV	0.0493	19.63760	5.97578	0.17652
25	30.065	VB	0.0467	56.50454	18.48126	0.50791
26	30.876	BB	0.0623	9.46334	2.38504	0.08506
27	31.052	BV	0.0548	11.53985	3.30105	0.10373
28	31.138	VB	0.0546	34.59780	9.46892	0.31100
29	31.814	BV	0.1011	31.69164	4.05810	0.28487
30	32.021	VB	0.0515	137.01974	41.54364	1.23165
31	32.760	BB	0.0515	7.48533	2.21333	0.06728
32	33.116	BB	0.0529	7.61967	2.34493	0.06849
33	33.324	BB	0.0716	14.40021	3.02329	0.12944
34	33.796	BB	0.0790	49.84343	8.94046	0.44804
35	34.195	BB	0.0693	6553.62305	1246.80359	58.90969
36	34.661	BV	0.0525	36.75646	11.14787	0.33040
37	35.089	BB	0.0505	209.02876	64.96925	1.87893
38	35.260	BB	0.0513	11.78815	3.79151	0.10596
39	35.481	BB	0.0526	8.92954	2.63054	0.08027
40	35.692	BV	0.0519	14.55177	4.36106	0.13080
41	35.811	VV	0.0607	57.85534	13.86935	0.52005
42	35.920	VB	0.0527	19.48532	5.71909	0.17515
43	37.748	BB	0.0585	14.47016	3.88205	0.13007
44	39.004	BB	0.0534	10.93316	3.23695	0.09828
45	40.169	BB	0.0578	8.54818	2.38647	0.07684
46	41.380	BV	0.0625	11.74466	2.88190	0.10557
47	41.495	VB	0.0608	13.86129	3.12255	0.12460
48	41.899	BB	0.0497	11.09834	3.52431	0.09976
49	42.377	BB	0.0579	21.48371	5.58818	0.19311
50	42.533	BB	0.0817	29.70810	5.04374	0.26704
51	42.732	BB	0.0484	9.57634	3.06674	0.08608
52	43.023	BB	0.0620	19.74256	4.79860	0.17746
53	43.219	BV	0.0589	20.26387	5.04581	0.18215
54	43.345	VB	0.0671	18.88426	4.49109	0.16975
55	43.578	BV	0.0635	58.75899	13.86199	0.52818
56	43.730	VV	0.0738	140.73505	26.98796	1.26505
57	43.868	VB	0.0568	101.76854	27.74285	0.91478
58	44.178	BV	0.0753	65.96975	11.78683	0.59299
59	44.352	VB	0.0578	88.91820	23.13410	0.79927
60	44.800	BB	0.1007	20.37691	2.71021	0.18317

Peak #	RetTime [min]	Type	Width [min]	Area [pA*s]	Height [pA]	Area %
61	45.187	BB	0.0524	76.88654	22.79402	0.69112
62	46.328	BB	0.0604	61.99171	15.24877	0.55724
63	47.505	BV	0.0544	21.71386	6.27491	0.19518
64	47.602	VB	0.0562	16.33625	4.12582	0.14684
65	48.229	BB	0.0601	14.48310	3.58622	0.13019
66	50.662	BB	0.0617	19.09124	4.22507	0.17161

Totals : 1.11249e4 2572.00228

=====  
\*\*\* End of Report \*\*\*