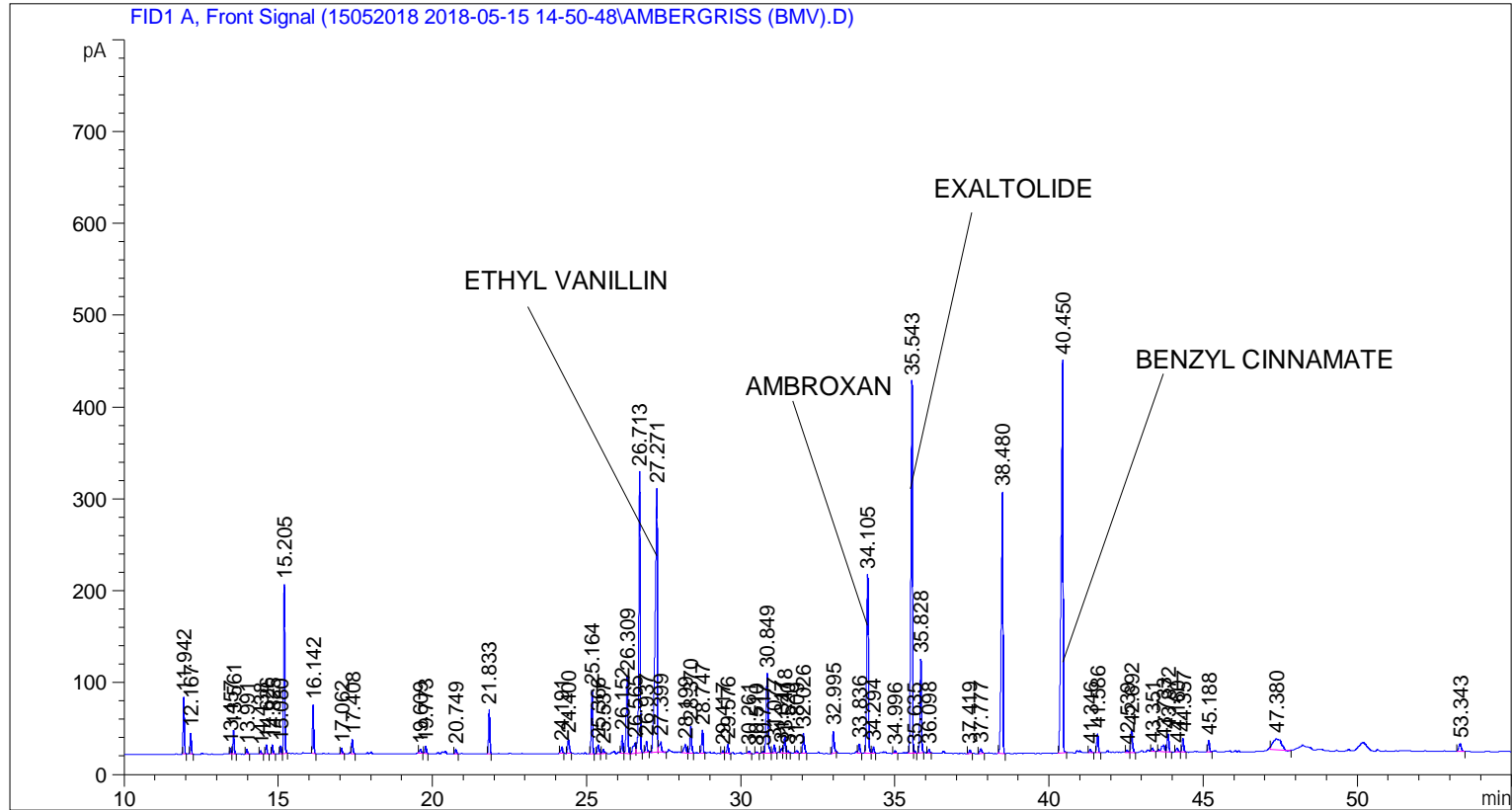


```
=====
Acq. Operator   : SYSTEM                               Seq. Line :    1
Acq. Instrument : BMV_NEW_GC_7820                     Location  : Vial 101
Injection Date  : 5/15/2018 2:54:10 PM                 Inj       :    1
                                                    Inj Volume: 0.5 µl

Acq. Method     : C:\CHEM32\2\DATA\15052018 2018-05-15 14-50-48\UNIVERSAL F.M
Last changed    : 5/15/2018 2:50:48 PM by SYSTEM
Analysis Method : C:\CHEM32\2\DATA\15052018 2018-05-15 14-50-48\UNIVERSAL F.M (Sequence
Method)
Last changed    : 5/28/2018 4:02:32 PM by SYSTEM
                (modified after loading)
Additional Info : Peak(s) manually integrated
=====
```



=====  
 Area Percent Report  
 =====

```
Sorted By      :      Signal
Multiplier     :      1.0000
Dilution       :      1.0000
Do not use Multiplier & Dilution Factor with ISTDs
```

Signal 1: FID1 A, Front Signal

Peak #	RetTime [min]	Type	Width [min]	Area [pA*s]	Height [pA]	Area %
1	11.942	BB	0.0427	168.79871	62.09730	1.42753
2	12.167	BB	0.0433	63.58487	22.93722	0.53774
3	13.457	BV	0.0426	18.26504	6.54145	0.15447
4	13.561	VB	0.0437	71.96612	25.67011	0.60862
5	13.991	BB	0.0435	14.88665	5.34637	0.12590
6	14.438	BB	0.0432	10.18365	3.68673	0.08612

Sample Name: AMBERGRISS (BMV)

Peak #	RetTime [min]	Type	Width [min]	Area [pA*s]	Height [pA]	Area %
7	14.626	BB	0.0432	26.64300	9.65209	0.22532
8	14.825	BB	0.0447	28.20020	10.06158	0.23849
9	15.080	BV	0.0415	22.64154	8.66613	0.19148
10	15.205	VB	0.0438	516.70410	183.95711	4.36978
11	16.142	BB	0.0430	144.56514	52.72475	1.22259
12	17.062	BB	0.0461	18.63791	6.18978	0.15762
13	17.408	BB	0.0453	46.72284	15.88645	0.39514
14	19.609	BB	0.0566	16.49128	4.04029	0.13947
15	19.773	BB	0.0469	23.11962	7.95356	0.19552
16	20.749	BB	0.0485	15.54029	4.83211	0.13142
17	21.833	BB	0.0459	139.76205	48.10939	1.18197
18	24.191	BB	0.0538	27.72750	7.38467	0.23449
19	24.400	BB	0.0554	60.47281	16.26938	0.51142
20	25.164	BB	0.0483	214.35573	68.88580	1.81281
21	25.366	BB	0.0568	36.43843	9.70214	0.30816
22	25.537	BB	0.0557	15.06985	4.21172	0.12745
23	26.152	BV	0.0507	62.66584	19.38152	0.52997
24	26.309	VB	0.0574	320.18079	84.17617	2.70778
25	26.565	BV	0.0775	64.18722	10.92561	0.54283
26	26.713	VB	0.0505	982.98718	306.11707	8.31314
27	26.937	BB	0.0547	41.75723	11.68310	0.35314
28	27.271	BV	0.0663	1360.01135	286.68399	11.50165
29	27.399	VB	0.0726	57.41759	11.23167	0.48558
30	28.199	BV	0.0704	44.56718	8.90109	0.37691
31	28.370	VB	0.0544	102.49156	28.90415	0.86677
32	28.747	BB	0.0503	81.43788	24.80966	0.68872
33	29.417	BV	0.0466	8.23911	2.77991	0.06968
34	29.576	VB	0.0551	35.89916	9.94215	0.30360
35	30.261	BB	0.0580	10.58455	2.74183	0.08951
36	30.510	BB	0.0465	5.66020	1.97328	0.04787
37	30.717	BV	0.0457	6.51135	2.25117	0.05507
38	30.849	VB	0.0721	386.87622	86.55193	3.27182
39	31.077	BB	0.0494	26.10014	8.37269	0.22073
40	31.317	BV	0.0482	16.23748	5.38648	0.13732
41	31.418	VV	0.0502	58.45480	17.83676	0.49435
42	31.520	VB	0.0539	10.39578	2.89158	0.08792
43	31.809	BB	0.0630	12.09995	2.82498	0.10233
44	32.026	BB	0.0557	80.99187	22.12507	0.68495
45	32.995	BB	0.0553	88.06080	23.71310	0.74473
46	33.836	BB	0.0512	32.69784	9.98500	0.27653
47	34.105	BB	0.0635	777.81866	195.05634	6.57803
48	34.294	BB	0.0504	22.61444	6.69513	0.19125
49	34.996	BB	0.0532	9.75049	2.76291	0.08246
50	35.543	BV	0.0547	1479.69604	404.49808	12.51382
51	35.635	VB	0.0422	7.16156	2.67933	0.06057
52	35.828	BB	0.0528	348.63864	102.10694	2.94844
53	36.098	BB	0.0535	13.52598	3.89441	0.11439
54	37.419	BB	0.0538	14.83161	4.23598	0.12543
55	37.777	BB	0.0701	22.90573	4.93524	0.19371
56	38.480	BB	0.0531	1075.70837	284.50470	9.09729
57	40.450	BB	0.0598	1749.17285	427.31049	14.79279
58	41.346	BB	0.0555	14.31299	3.75048	0.12105
59	41.586	BB	0.0537	71.38750	20.48511	0.60373
60	42.539	BB	0.0509	9.05506	2.58335	0.07658

Sample Name: AMBERGRISS (BMV)

Peak #	RetTime [min]	Type	Width [min]	Area [pA*s]	Height [pA]	Area %
61	42.692	BB	0.0589	93.12641	24.21243	0.78757
62	43.351	BB	0.0638	13.33440	3.18727	0.11277
63	43.733	BV	0.1003	57.06484	7.45853	0.48260
64	43.872	VB	0.0559	69.22735	19.25442	0.58546
65	44.160	BB	0.0629	19.97920	4.57828	0.16896
66	44.357	BB	0.0514	53.03444	14.92987	0.44851
67	45.188	BB	0.0550	42.04264	11.96801	0.35556
68	47.380	BB	0.2247	216.21796	11.86125	1.82856
69	53.343	BB	0.0851	46.59650	8.34911	0.39407

Totals : 1.18245e4 3148.29376

=====  
\*\*\* End of Report \*\*\*