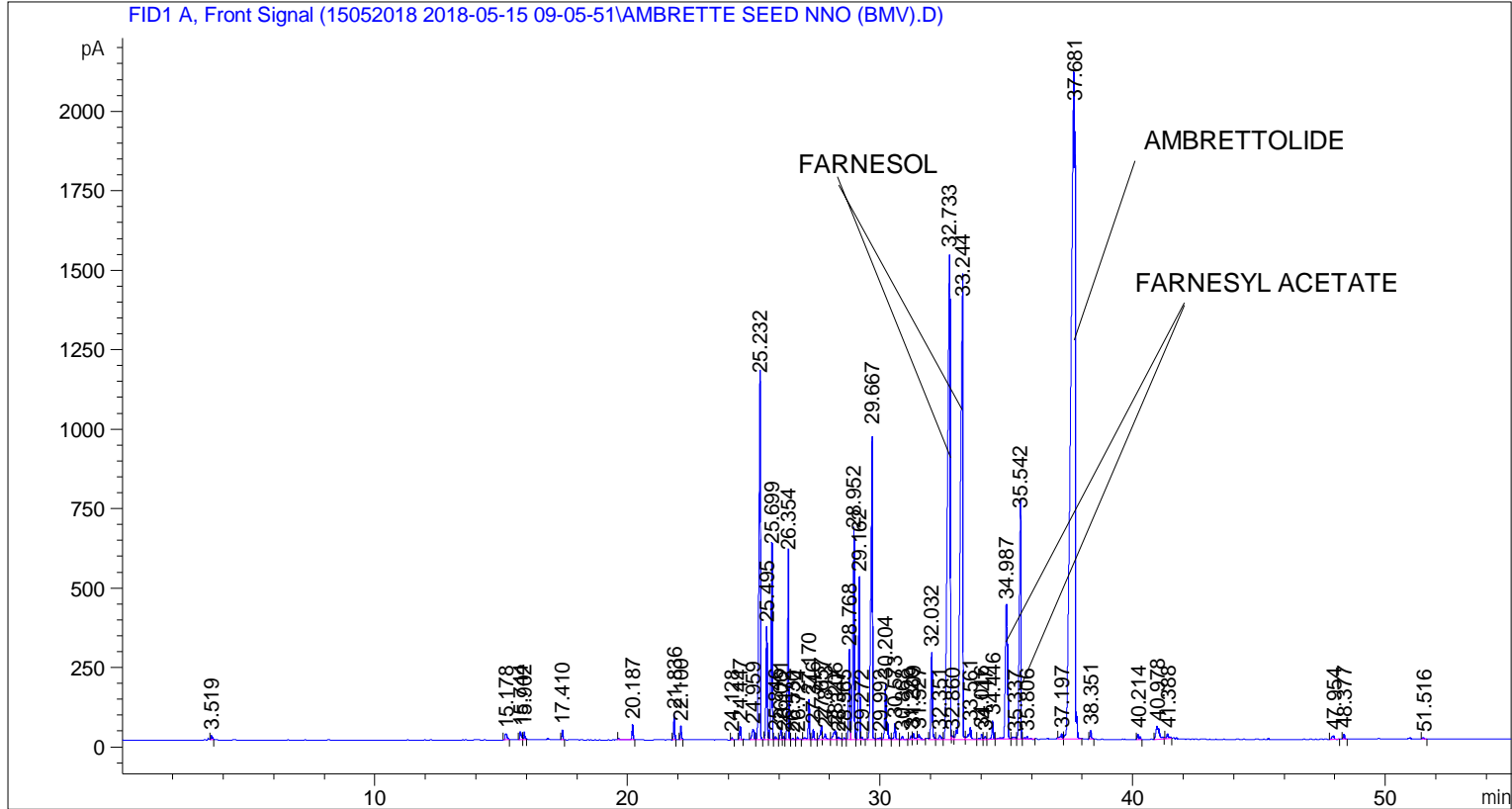


```

=====
Acq. Operator   : SYSTEM                               Seq. Line :    5
Acq. Instrument : BMV_NEW_GC_7820                     Location  : Vial 105
Injection Date  : 5/15/2018 12:24:14 PM                Inj       :    1
                                                    Inj Volume: 0.5 µl

Acq. Method     : C:\CHEM32\2\DATA\15052018 2018-05-15 09-05-51\UNIVERSAL F.M
Last changed    : 5/15/2018 9:05:56 AM by SYSTEM
Analysis Method : C:\CHEM32\2\DATA\15052018 2018-05-15 09-05-51\UNIVERSAL F.M (Sequence
Method)
Last changed    : 5/18/2018 10:41:28 AM by SYSTEM
                  (modified after loading)
  
```



Area Percent Report

```

Sorted By      : Signal
Multiplier     : 1.0000
Dilution       : 1.0000
Do not use Multiplier & Dilution Factor with ISTDs
  
```

Signal 1: FID1 A, Front Signal

Peak #	RetTime [min]	Type	Width [min]	Area [pA*s]	Height [pA]	Area %
1	3.519	BB	0.0541	56.02553	15.53206	0.07214
2	15.178	BB	0.0902	104.94013	18.48744	0.13512
3	15.744	BV	0.0642	114.19112	25.51859	0.14703
4	15.902	VB	0.0524	85.58801	24.69262	0.11020
5	17.410	BB	0.0456	85.91621	29.84946	0.11062
6	20.187	BB	0.0557	157.59544	46.32607	0.20292
7	21.836	BB	0.0470	236.01385	78.68217	0.30389

Sample Name: AMBRETTE SEED NNO (BMV)

Peak #	RetTime [min]	Type	Width [min]	Area [pA*s]	Height [pA]	Area %
8	22.100	BB	0.0486	134.47400	42.82653	0.17315
9	24.128	BB	0.0484	19.17843	6.14508	0.02469
10	24.447	BB	0.0500	135.73062	41.61881	0.17476
11	24.959	BV	0.1020	201.21582	31.71178	0.25908
12	25.232	VB	0.0619	4855.31299	1135.74390	6.25158
13	25.495	BV	0.0585	1275.76660	350.57159	1.64265
14	25.699	VV	0.0542	2161.38550	598.06982	2.78295
15	25.846	VV	0.0615	43.34959	10.22267	0.05582
16	26.061	VV	0.0505	119.57697	36.20632	0.15396
17	26.172	VV	0.0593	36.33925	9.79261	0.04679
18	26.354	VB	0.0530	2031.46973	578.07782	2.61567
19	26.530	BV	0.0681	19.74160	4.41925	0.02542
20	26.724	VB	0.0645	38.41281	8.53792	0.04946
21	27.170	BV	0.0584	448.85605	123.53838	0.57794
22	27.346	VB	0.0549	108.62163	32.61536	0.13986
23	27.657	BV	0.0610	184.22186	43.90464	0.23720
24	27.813	VB	0.0882	110.58912	17.87477	0.14239
25	28.206	BV	0.1017	206.47589	28.10651	0.26585
26	28.347	VB	0.0794	41.83006	7.69495	0.05386
27	28.565	BV	0.0721	28.59066	5.55316	0.03681
28	28.768	VV	0.0515	934.25696	276.14496	1.20293
29	28.952	VV	0.0668	2821.56860	648.05243	3.63298
30	29.162	VV	0.0555	1730.50281	510.86411	2.22815
31	29.272	VB	0.0625	38.53797	8.89814	0.04962
32	29.667	BB	0.0670	4253.77100	973.61194	5.47705
33	29.992	BV	0.0925	39.11281	5.67130	0.05036
34	30.204	VV	0.0703	814.63928	175.11688	1.04891
35	30.573	VB	0.0609	188.53574	48.95155	0.24275
36	30.868	BB	0.0653	42.70343	10.11309	0.05498
37	31.220	BV	0.0552	43.71115	11.81644	0.05628
38	31.309	VB	0.0730	98.69215	20.20473	0.12707
39	31.527	BB	0.0776	87.04366	15.47507	0.11208
40	32.032	BB	0.0629	1095.33826	272.33716	1.41033
41	32.351	BV	0.0841	77.74287	13.30957	0.10010
42	32.733	VV	0.1056	1.07158e4	1532.27295	13.79737
43	32.860	VV	0.0621	55.08667	12.81873	0.07093
44	33.244	VV	0.1096	9624.82715	1375.34802	12.39269
45	33.561	VV	0.0862	235.39127	39.09288	0.30308
46	34.016	VV	0.0641	71.30821	17.30200	0.09181
47	34.147	VV	0.0622	37.48167	9.46685	0.04826
48	34.446	VV	0.0588	234.52342	58.43075	0.30197
49	34.987	VV	0.0882	2604.78223	420.68839	3.35385
50	35.337	VV	0.1209	59.86155	6.65481	0.07708
51	35.542	VV	0.0724	3184.62524	709.62158	4.10044
52	35.806	VB	0.0957	56.22438	7.83707	0.07239
53	37.197	BV	0.0854	95.71793	16.08746	0.12324
54	37.681	VB	0.1566	2.45933e4	2100.97119	31.66578
55	38.351	BB	0.0551	99.18871	26.83485	0.12771
56	40.214	BB	0.0771	88.17764	16.84922	0.11354
57	40.978	BB	0.1273	377.78619	41.08953	0.48643
58	41.388	BB	0.0817	83.19913	14.76891	0.10713
59	47.954	BB	0.0988	63.61244	11.10180	0.08191
60	48.377	BB	0.0572	56.98899	16.15215	0.07338
61	51.516	BB	0.0714	19.88999	4.51734	0.02561

Peak #	RetTime [min]	Type	Width [min]	Area [pA*s]	Height [pA]	Area %
----- ----- ----- ----- ----- ----- -----						
Totals :				7.76654e4	1.27808e4	

=====
*** End of Report ***