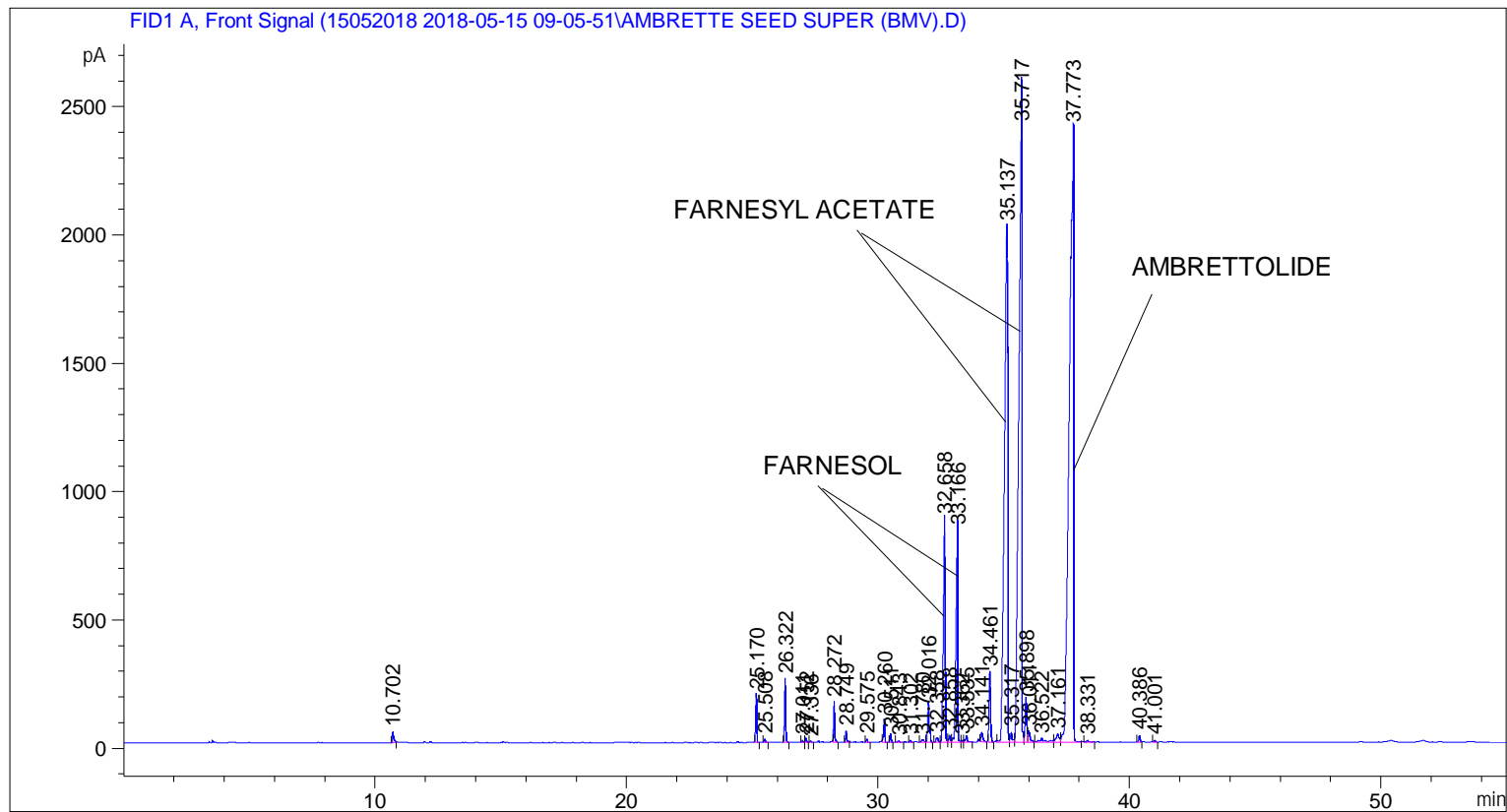


```

=====
Acq. Operator   : SYSTEM                      Seq. Line :    6
Acq. Instrument : BMV_NEW_GC_7820           Location  : Vial 106
Injection Date  : 5/15/2018 1:33:13 PM      Inj       :    1
                                           Inj Volume: 0.5 µl
Method         : C:\CHEM32\2\DATA\15052018 2018-05-15 09-05-51\UNIVERSAL F.M (Sequence
Method)
Last changed    : 5/15/2018 9:05:56 AM by SYSTEM
                 (modified after loading) (Current integration events modified)
=====
  
```



Area Percent Report

```

Sorted By      : Signal
Multiplier     : 1.0000
Dilution       : 1.0000
Do not use Multiplier & Dilution Factor with ISTDs
  
```

Signal 1: FID1 A, Front Signal

Peak #	RetTime [min]	Type	Width [min]	Area [pA*s]	Height [pA]	Area %
1	10.702	BB	0.0502	134.18301	40.92950	0.16038
2	25.170	BB	0.0535	592.81531	184.35220	0.70855
3	25.508	BB	0.0568	45.58424	13.03285	0.05448
4	26.322	BB	0.0543	811.34052	247.13512	0.96974
5	27.011	BV	0.0541	27.31582	8.36895	0.03265
6	27.152	VB	0.0497	53.36769	16.52177	0.06379
7	27.336	BB	0.0593	16.36208	4.41294	0.01956
8	28.272	BB	0.0499	505.21707	155.33701	0.60385
9	28.749	BB	0.0568	155.03400	44.28815	0.18530

Peak #	RetTime [min]	Type	Width [min]	Area [pA*s]	Height [pA]	Area %
10	29.575	BB	0.0554	42.84807	12.70273	0.05121
11	30.260	BB	0.0531	314.86807	89.28632	0.37634
12	30.511	BB	0.0498	112.26497	34.69044	0.13418
13	30.843	BB	0.0861	29.10417	5.84492	0.03479
14	31.302	BB	0.0406	11.90033	5.63332	0.01422
15	31.780	BV	0.1073	68.45817	10.06715	0.08182
16	32.016	VB	0.0691	692.50238	152.27097	0.82770
17	32.358	BV	0.0979	108.15427	18.04939	0.12927
18	32.658	VV	0.0799	4459.12549	868.70135	5.32969
19	32.858	VV	0.0652	119.07446	26.10986	0.14232
20	33.166	VV	0.0785	4142.40332	825.88538	4.95113
21	33.362	VV	0.0712	32.31165	6.83512	0.03862
22	33.535	VB	0.0803	140.04309	25.41370	0.16738
23	34.141	BB	0.0809	191.36722	36.67484	0.22873
24	34.461	BB	0.0708	1186.03503	272.35840	1.41759
25	35.137	BV	0.1418	1.89258e4	2011.31873	22.62077
26	35.317	VV	0.0761	193.03230	37.46014	0.23072
27	35.717	VV	0.1182	2.10106e4	2398.97217	25.11252
28	35.898	VV	0.0648	724.28918	173.27458	0.86569
29	36.011	VB	0.0871	250.12424	43.48637	0.29896
30	36.522	BB	0.1785	209.11403	15.01683	0.24994
31	37.161	BV	0.1142	265.63467	31.54958	0.31749
32	37.773	VB	0.1482	2.79438e4	2393.49463	33.39937
33	38.331	BB	0.0837	33.65057	5.80164	0.04022
34	40.386	BB	0.0589	94.34332	25.65251	0.11276
35	41.001	BB	0.0550	23.63600	7.06289	0.02825

Totals : 8.36658e4 1.02480e4

=====
*** End of Report ***