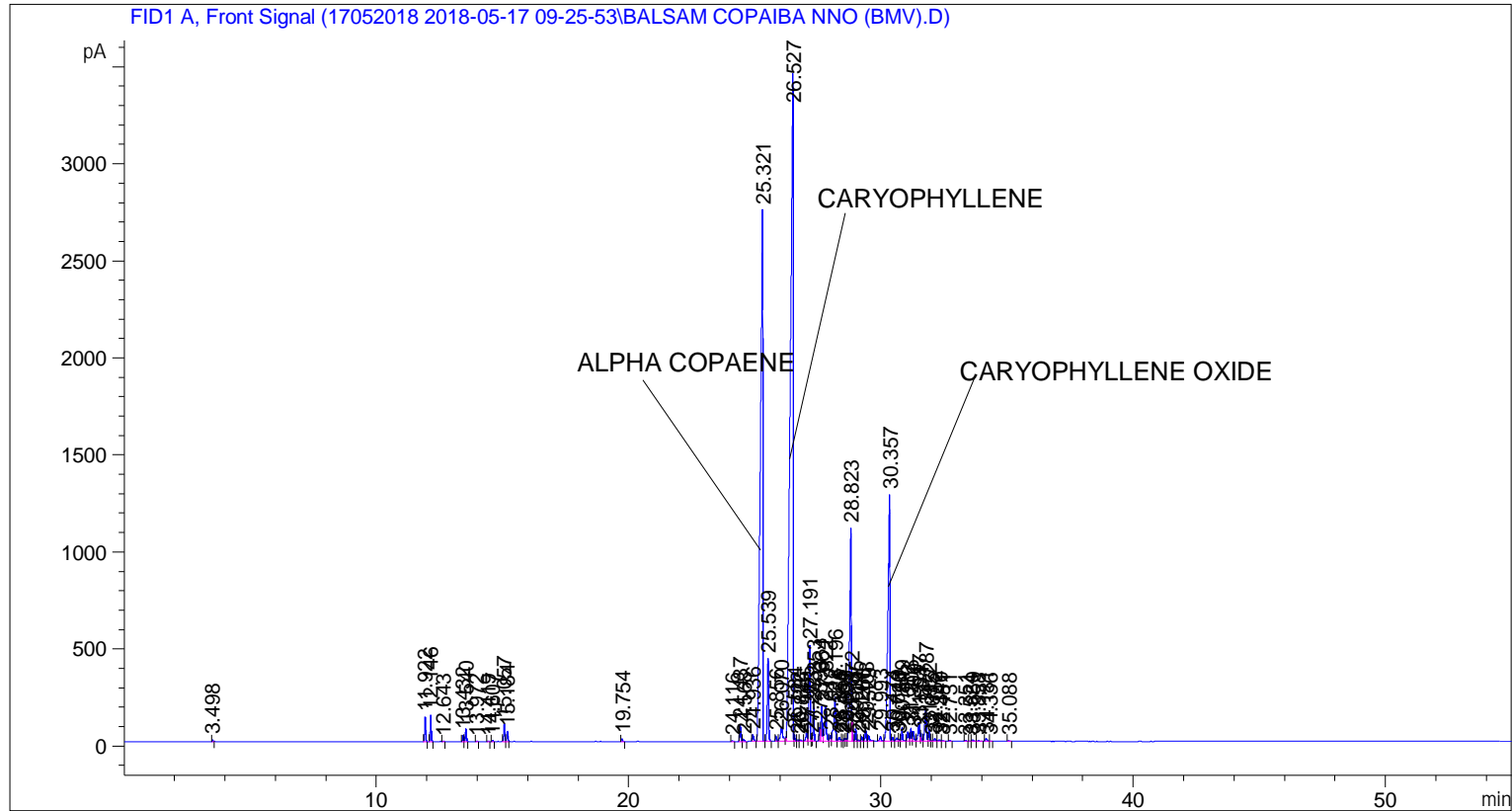


```

=====
Acq. Operator   : SYSTEM                               Seq. Line :    5
Acq. Instrument : BMV_NEW_GC_7820                     Location  : Vial 105
Injection Date  : 5/17/2018 2:43:57 PM                 Inj       :    1
                                                    Inj Volume: 0.5 µl
Method          : C:\CHEM32\2\DATA\17052018 2018-05-17 09-25-53\UNIVERSAL F.M (Sequence
Method)
Last changed    : 5/17/2018 9:25:59 AM by SYSTEM
  
```



=====
 Area Percent Report
 =====

```

Sorted By      :      Signal
Multiplier     :      1.0000
Dilution       :      1.0000
Do not use Multiplier & Dilution Factor with ISTDs
  
```

Signal 1: FID1 A, Front Signal

Peak #	RetTime [min]	Type	Width [min]	Area [pA*s]	Height [pA]	Area %
1	3.498	BB	0.0301	15.54391	7.21087	0.02214
2	11.922	BB	0.0426	342.87610	126.56328	0.48842
3	12.146	BB	0.0433	373.80289	134.81560	0.53248
4	12.643	BB	0.0445	6.48439	2.32971	0.00924
5	13.432	BV	0.0416	97.55709	35.99284	0.13897
6	13.540	VB	0.0443	194.65692	68.23156	0.27729
7	13.972	BB	0.0446	9.23677	3.20534	0.01316
8	14.419	BB	0.0427	9.40093	3.46100	0.01339
9	14.607	BB	0.0434	16.40756	5.91294	0.02337
10	15.057	BV	0.0441	251.02303	91.23603	0.35758

Sample Name: BALSAM COPAIBA NNO (BMV)

Peak #	RetTime [min]	Type	Width [min]	Area [pA*s]	Height [pA]	Area %
11	15.184	VB	0.0441	145.80069	51.39316	0.20769
12	19.754	BB	0.0456	41.14698	13.86059	0.05861
13	24.116	BB	0.0532	14.08564	3.98691	0.02006
14	24.437	BV	0.0551	308.56195	87.63068	0.43954
15	24.568	VB	0.0548	37.16500	10.38510	0.05294
16	24.936	BB	0.0620	141.77666	34.42386	0.20196
17	25.321	BV	0.0811	1.78602e4	2738.94897	25.44163
18	25.539	VB	0.0530	1503.60828	427.76010	2.14187
19	25.856	BV	0.0494	79.03360	25.35281	0.11258
20	26.070	VB	0.0955	460.08774	70.15071	0.65539
21	26.527	BV	0.1016	2.72879e4	3436.53833	38.87132
22	26.584	VB	0.0384	84.61419	34.70668	0.12053
23	26.722	BV	0.0468	27.55859	8.98517	0.03926
24	26.826	VV	0.0741	32.79675	6.81695	0.04672
25	27.065	VV	0.0585	155.09027	38.88643	0.22092
26	27.191	VV	0.0525	1637.29956	495.79730	2.33232
27	27.273	VV	0.0343	27.75190	12.28779	0.03953
28	27.353	VB	0.0477	538.36346	175.98065	0.76689
29	27.593	BV	0.0449	203.96109	70.24266	0.29054
30	27.664	VV	0.0547	631.85681	176.75000	0.90007
31	27.822	VV	0.0591	770.80939	183.18713	1.09801
32	28.012	VV	0.0572	114.40788	28.87463	0.16297
33	28.196	VV	0.0738	1195.46826	229.46257	1.70293
34	28.356	VV	0.0698	98.13231	20.90971	0.13979
35	28.464	VV	0.0563	23.86484	6.58224	0.03400
36	28.563	VV	0.0494	44.29565	13.81096	0.06310
37	28.639	VV	0.0520	43.43907	12.66545	0.06188
38	28.823	VV	0.0614	5029.54980	1099.82642	7.16454
39	28.872	VV	0.0289	217.05469	115.67492	0.30919
40	29.005	VV	0.0436	187.64253	67.08842	0.26729
41	29.114	VV	0.0487	25.70180	8.17976	0.03661
42	29.260	VV	0.0474	68.07256	22.43044	0.09697
43	29.408	VV	0.0526	192.09201	58.00969	0.27363
44	29.529	VB	0.0622	117.76441	27.94846	0.16775
45	29.993	BV	0.0723	107.78291	22.33268	0.15354
46	30.357	VV	0.0702	6674.81250	1271.61414	9.50820
47	30.474	VV	0.0544	64.58655	19.11247	0.09200
48	30.649	VV	0.0664	73.12039	15.38896	0.10416
49	30.726	VV	0.0540	40.83068	11.07198	0.05816
50	30.849	VB	0.0517	231.93396	68.19629	0.33039
51	31.082	BV	0.0607	202.00380	49.38005	0.28775
52	31.206	VV	0.0533	241.21315	69.78735	0.34361
53	31.300	VV	0.0547	183.95464	50.22787	0.26204
54	31.517	VV	0.0588	398.43613	99.42204	0.56757
55	31.594	VV	0.0485	131.46851	40.88677	0.18728
56	31.787	VV	0.0674	728.33002	162.01160	1.03750
57	31.922	VV	0.0492	174.40950	54.70485	0.24844
58	32.015	VV	0.0468	14.51159	4.60605	0.02067
59	32.152	VV	0.0643	58.72579	12.85987	0.08365
60	32.340	VV	0.0845	34.05978	5.88491	0.04852
61	32.451	VB	0.0507	10.83348	3.18045	0.01543
62	32.731	BB	0.0492	15.46409	4.85422	0.02203
63	33.351	BB	0.0509	17.25241	5.45448	0.02458
64	33.524	BV	0.0511	7.59497	2.32431	0.01082

Peak #	RetTime [min]	Type	Width [min]	Area [pA*s]	Height [pA]	Area %
65	33.659	VB	0.0760	29.62878	5.86080	0.04221
66	33.858	BB	0.0836	18.13056	3.43405	0.02583
67	34.181	BB	0.0637	57.43502	13.49250	0.08182
68	34.336	BB	0.0461	6.09854	2.21480	0.00869
69	35.088	BB	0.0576	14.05852	3.52186	0.02003

Totals : 7.02006e4 1.22963e4

=====
*** End of Report ***