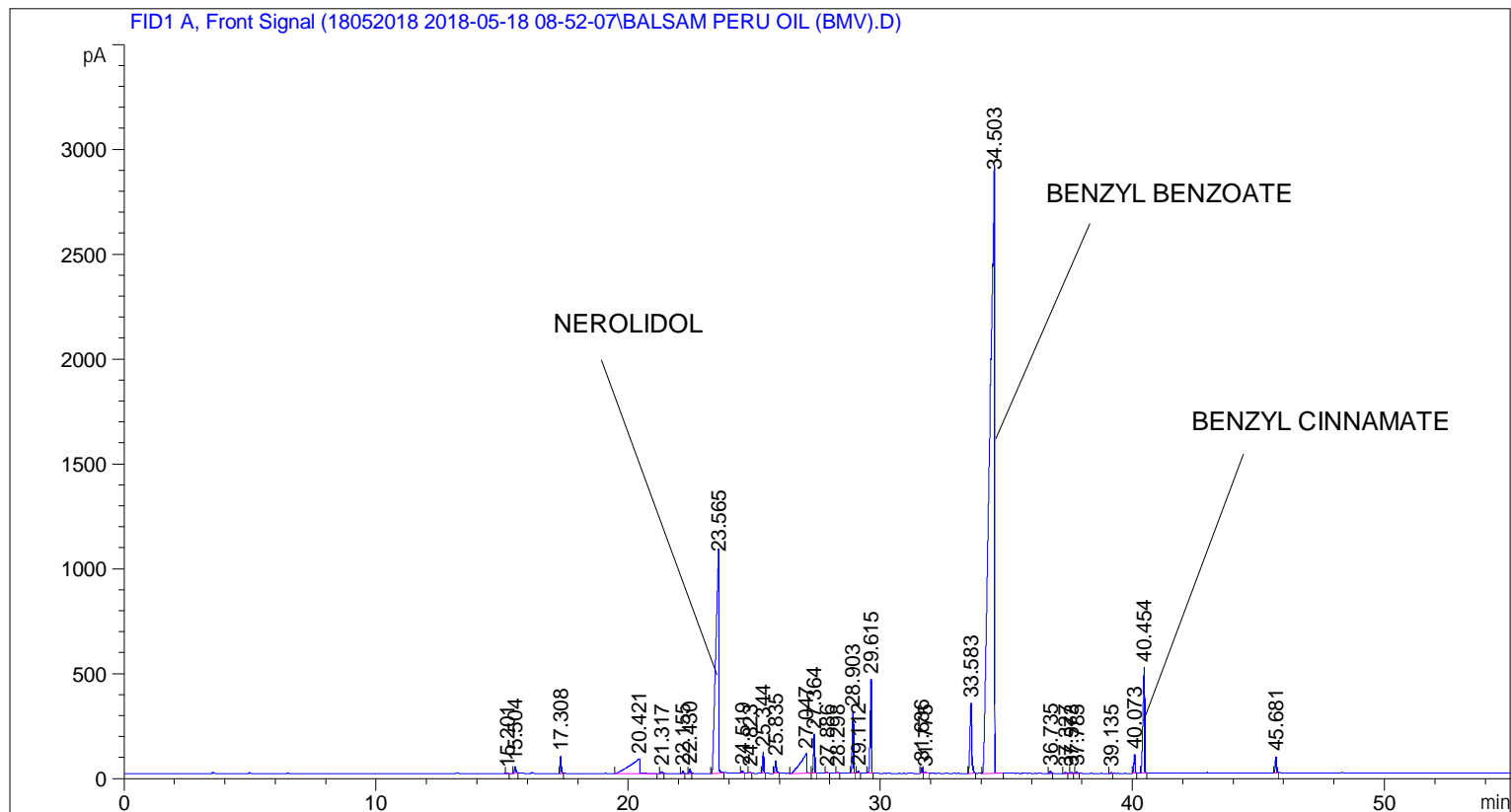


```

=====
Acq. Operator   : SYSTEM                               Seq. Line :    1
Acq. Instrument : BMV_NEW_GC_7820                     Location  : Vial 101
Injection Date  : 5/18/2018 9:13:53 AM                Inj       :    1
                                                    Inj Volume: 0.5 µl

Acq. Method     : C:\CHEM32\2\DATA\18052018 2018-05-18 08-52-07\UNIVERSAL F.M
Last changed    : 5/18/2018 8:52:12 AM by SYSTEM
Analysis Method : C:\CHEM32\2\DATA\18052018 2018-05-18 08-52-07\UNIVERSAL F.M (Sequence
Method)
Last changed    : 5/28/2018 2:44:53 PM by SYSTEM
                  (modified after loading)

Additional Info  : Peak(s) manually integrated
  
```



=====
 Area Percent Report
 =====

```

Sorted By       : Signal
Multiplier      : 1.0000
Dilution        : 1.0000
Do not use Multiplier & Dilution Factor with ISTDs
  
```

Signal 1: FID1 A, Front Signal

Peak #	RetTime [min]	Type	Width [min]	Area [pA*s]	Height [pA]	Area %
1	15.201	BB	0.0464	11.17323	3.79347	0.01847
2	15.504	BB	0.0619	129.52977	31.57603	0.21415
3	17.308	BB	0.0482	248.31511	80.13735	0.41053
4	20.421	BB	0.3274	1894.27405	69.62555	3.13173
5	21.317	BB	0.0571	31.93796	8.65320	0.05280
6	22.155	BB	0.0549	36.17193	10.32751	0.05980

