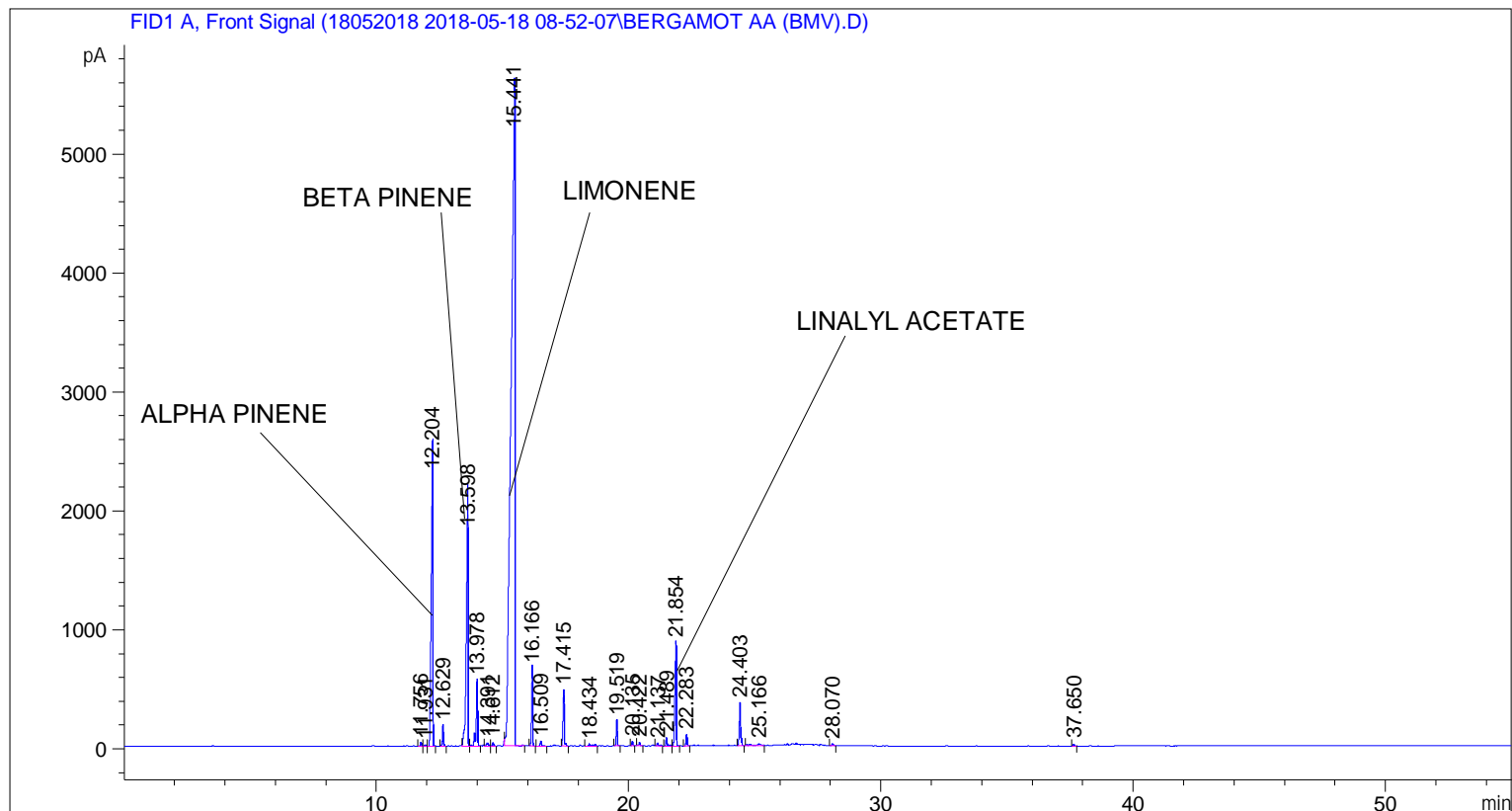


```
=====
Acq. Operator   : SYSTEM                               Seq. Line :    6
Acq. Instrument : BMV_NEW_GC_7820                     Location  : Vial 106
Injection Date  : 5/18/2018 3:31:17 PM                 Inj       :    1
                                                    Inj Volume: 0.5 µl

Acq. Method    : C:\CHEM32\2\DATA\18052018 2018-05-18 08-52-07\UNIVERSAL F.M
Last changed   : 5/18/2018 8:52:12 AM by SYSTEM
Analysis Method: C:\CHEM32\2\DATA\18052018 2018-05-18 08-52-07\UNIVERSAL F.M (Sequence
Method)
Last changed   : 5/28/2018 2:31:26 PM by SYSTEM
                (modified after loading)
=====
```



=====
 Area Percent Report
 =====

```
Sorted By      :      Signal
Multiplier     :      1.0000
Dilution       :      1.0000
Do not use Multiplier & Dilution Factor with ISTDs
```

Signal 1: FID1 A, Front Signal

Peak #	RetTime [min]	Type	Width [min]	Area [pA*s]	Height [pA]	Area %
1	11.756	BV	0.0554	107.22027	35.30260	0.11532
2	11.931	VV	0.0570	41.35649	11.76473	0.04448
3	12.204	VB	0.0794	1.15872e4	2276.84937	12.46222
4	12.629	BB	0.0549	526.99011	175.91959	0.56678
5	13.598	BV	0.0856	1.01222e4	1799.75000	10.88652
6	13.978	VB	0.0642	2096.79810	553.06848	2.25513
7	14.391	BV	0.0780	128.39413	27.76439	0.13809

Peak #	RetTime [min]	Type	Width [min]	Area [pA*s]	Height [pA]	Area %
8	14.612	VB	0.0615	96.02000	27.00609	0.10327
9	15.441	BB	0.1469	5.78063e4	5150.70801	62.17146
10	16.166	BB	0.0564	2032.73254	651.19910	2.18623
11	16.509	BB	0.0625	145.46083	39.91152	0.15645
12	17.415	BB	0.0566	1629.96545	468.74292	1.75305
13	18.434	BB	0.1154	135.20024	15.87155	0.14541
14	19.519	BB	0.0577	676.63397	209.46007	0.72773
15	20.135	BB	0.0517	111.30604	36.35049	0.11971
16	20.422	BB	0.0649	124.14206	29.59539	0.13352
17	21.137	BB	0.0720	98.77083	22.16348	0.10623
18	21.489	BV	0.0611	240.76726	68.37745	0.25895
19	21.854	VB	0.0689	3327.49536	864.11194	3.57877
20	22.283	BB	0.0549	276.50534	92.56248	0.29739
21	24.403	BB	0.0634	1319.43250	354.72305	1.41907
22	25.166	BB	0.2210	226.76978	13.15983	0.24389
23	28.070	BB	0.0744	65.95815	14.13481	0.07094
24	37.650	BB	0.0554	55.23114	16.35628	0.05940

Totals : 9.29789e4 1.29549e4

=====
*** End of Report ***