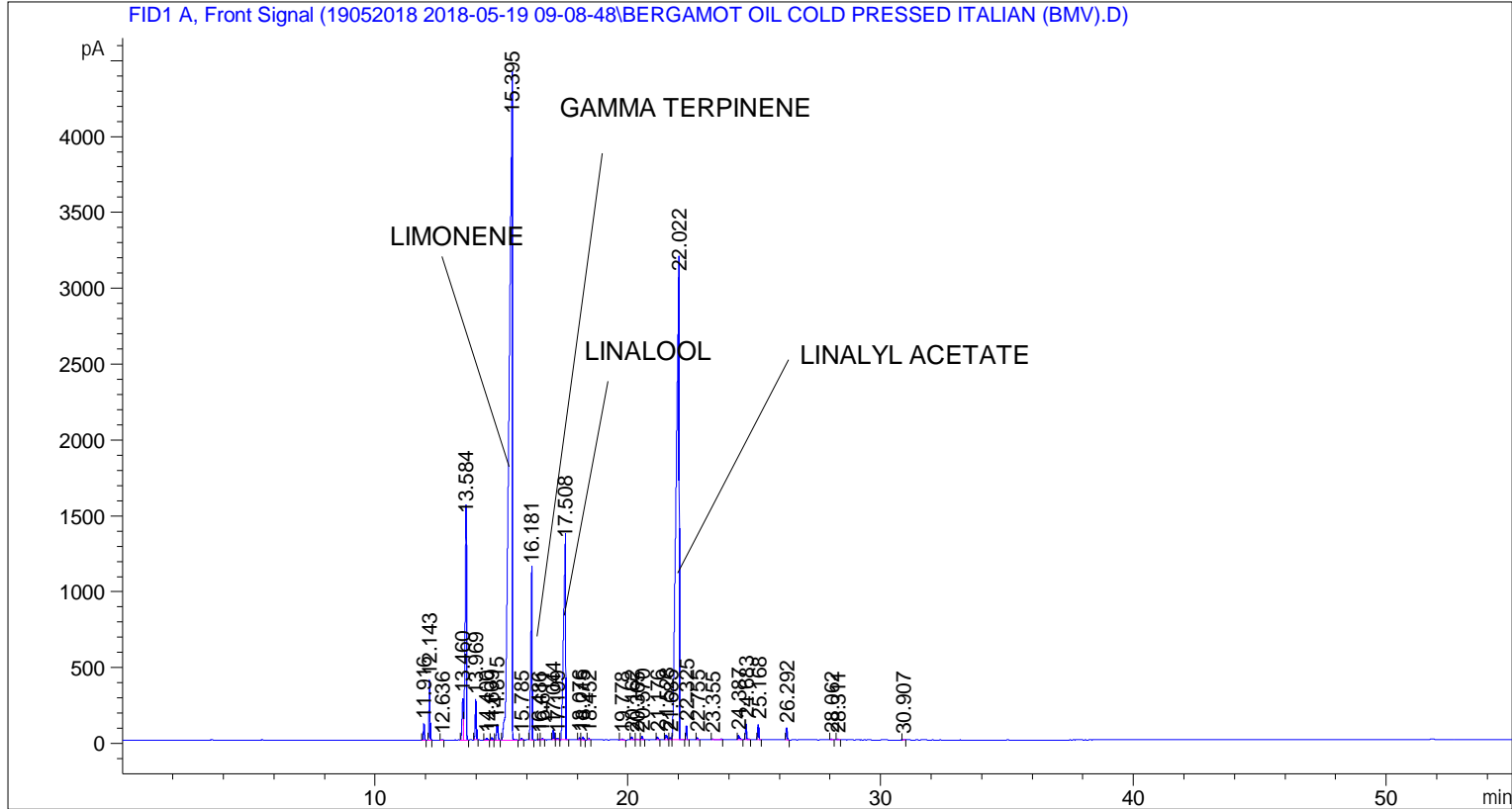


```

=====
Acq. Operator   : SYSTEM                               Seq. Line :    5
Acq. Instrument : BMV_NEW_GC_7820                     Location  : Vial 105
Injection Date  : 5/19/2018 2:20:58 PM                Inj       :    1
                                                    Inj Volume: 0.5 µl

Acq. Method     : C:\CHEM32\2\DATA\19052018 2018-05-19 09-08-48\UNIVERSAL F.M
Last changed    : 5/19/2018 9:08:56 AM by SYSTEM
Analysis Method : C:\CHEM32\2\DATA\19052018 2018-05-19 09-08-48\UNIVERSAL F.M (Sequence
Method)
Last changed    : 5/28/2018 2:52:40 PM by SYSTEM
                  (modified after loading)
  
```



=====  
 Area Percent Report  
 =====

```

Sorted By      :      Signal
Multiplier     :      1.0000
Dilution      :      1.0000
Do not use Multiplier & Dilution Factor with ISTDs
  
```

Signal 1: FID1 A, Front Signal

Peak #	RetTime [min]	Type	Width [min]	Area [pA*s]	Height [pA]	Area %
1	11.916	BB	0.0468	294.53525	104.71280	0.34021
2	12.143	BB	0.0466	1095.56360	391.93292	1.26545
3	12.636	BB	0.0476	11.36982	3.72427	0.01313
4	13.460	BV	0.0623	1090.47485	274.87909	1.25957
5	13.584	VB	0.0592	5658.93799	1459.80420	6.53646
6	13.969	BB	0.0487	789.38782	265.52298	0.91180
7	14.400	BB	0.0684	45.78266	11.02595	0.05288

Peak #	RetTime [min]	Type	Width [min]	Area [pA*s]	Height [pA]	Area %
8	14.609	BB	0.0515	49.15928	15.29431	0.05678
9	14.815	BB	0.0667	419.94983	100.67395	0.48507
10	15.395	BB	0.1165	3.73711e4	4093.37622	43.16620
11	15.785	BB	0.0475	30.59082	10.65002	0.03533
12	16.181	BB	0.0569	3945.02197	1125.33423	4.55677
13	16.486	BV	0.0418	14.38859	5.27182	0.01662
14	16.611	VB	0.0551	30.84774	8.74934	0.03563
15	17.044	BV	0.0488	206.99959	69.34259	0.23910
16	17.199	VV	0.0632	48.82246	12.05579	0.05639
17	17.508	VB	0.0826	7837.03955	1294.94800	9.05231
18	18.076	BV	0.0484	39.51563	13.41002	0.04564
19	18.215	VB	0.0563	74.11070	20.45295	0.08560
20	18.452	BB	0.0443	23.68460	8.56728	0.02736
21	19.778	BB	0.0713	21.40110	4.86556	0.02472
22	20.162	BB	0.0626	76.91338	20.10247	0.08884
23	20.365	BV	0.0770	22.27618	4.12465	0.02573
24	20.570	VB	0.0504	75.29135	24.11486	0.08697
25	21.176	BB	0.0549	66.34133	18.94263	0.07663
26	21.528	BV	0.0693	138.47180	31.47143	0.15994
27	21.685	VV	0.0615	56.07805	14.37559	0.06477
28	22.022	VB	0.1081	2.56492e4	3050.42798	29.62654
29	22.325	BB	0.0426	237.28432	90.52106	0.27408
30	22.755	BB	0.0525	49.50049	14.98756	0.05718
31	23.355	BB	0.0768	30.93080	5.57201	0.03573
32	24.387	BB	0.0626	122.59718	28.24048	0.14161
33	24.683	BB	0.0517	339.11258	104.87948	0.39170
34	25.168	BB	0.0496	313.81558	102.85464	0.36248
35	26.292	BB	0.0507	246.35434	78.34225	0.28456
36	28.062	BB	0.0539	20.57255	6.01650	0.02376
37	28.311	BB	0.0479	19.27010	6.62918	0.02226
38	30.907	BB	0.0556	12.29586	3.44608	0.01420

Totals : 8.65750e4 1.28996e4

=====  
\*\*\* End of Report \*\*\*