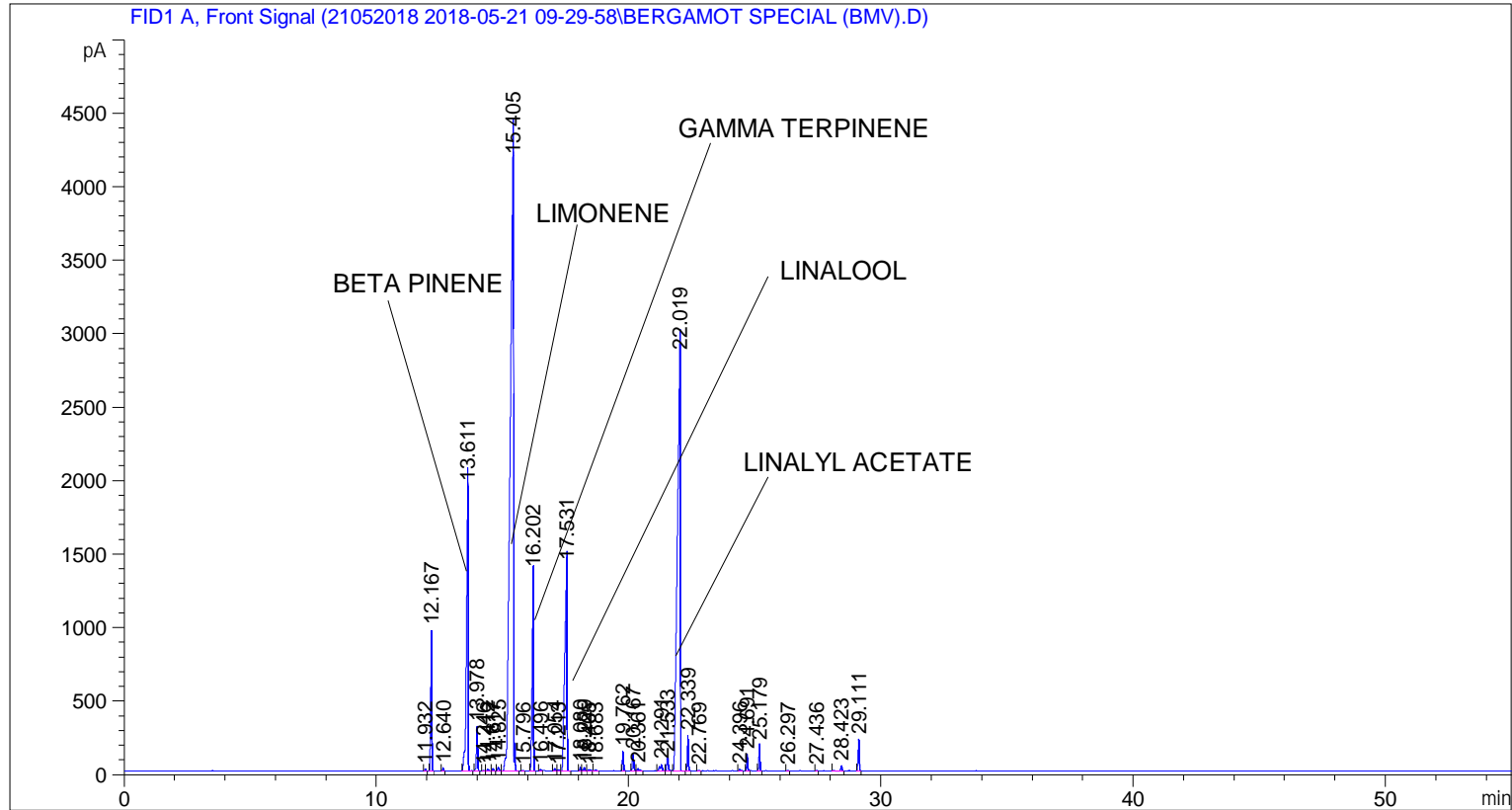


```

=====
Acq. Operator   : SYSTEM                               Seq. Line :    2
Acq. Instrument : BMV_NEW_GC_7820                     Location  : Vial 102
Injection Date  : 5/21/2018 11:05:18 AM                Inj       :    1
                                                    Inj Volume: 0.5 µl

Acq. Method    : C:\CHEM32\2\DATA\21052018 2018-05-21 09-29-58\UNIVERSAL F.M
Last changed   : 5/21/2018 9:30:04 AM by SYSTEM
Analysis Method: C:\CHEM32\2\DATA\21052018 2018-05-21 09-29-58\UNIVERSAL F.M (Sequence
Method)
Last changed   : 5/28/2018 3:24:25 PM by SYSTEM
                (modified after loading)
  
```



=====
 Area Percent Report
 =====

```

Sorted By      :      Signal
Multiplier    :      1.0000
Dilution      :      1.0000
Do not use Multiplier & Dilution Factor with ISTDs
  
```

Signal 1: FID1 A, Front Signal

Peak #	RetTime [min]	Type	Width [min]	Area [pA*s]	Height [pA]	Area %
1	11.932	BB	0.0449	41.52116	14.70767	0.04405
2	12.167	BB	0.0467	2854.71802	959.45337	3.02856
3	12.640	BB	0.0478	59.12207	19.24479	0.06272
4	13.611	BB	0.0695	9211.97754	1934.79773	9.77297
5	13.978	BB	0.0501	933.61121	301.76801	0.99047
6	14.246	BB	0.0533	20.52775	5.79844	0.02178
7	14.412	BB	0.0721	51.14186	11.44578	0.05426

Peak #	RetTime [min]	Type	Width [min]	Area [pA*s]	Height [pA]	Area %
8	14.617	BB	0.0515	52.04457	16.18684	0.05521
9	14.825	BB	0.0632	97.22524	24.01369	0.10315
10	15.405	BB	0.1203	3.86101e4	4158.28857	40.96132
11	15.796	BB	0.0490	19.26096	6.41944	0.02043
12	16.202	BB	0.0586	5162.76758	1351.32275	5.47717
13	16.496	BB	0.0454	30.69913	10.72859	0.03257
14	17.054	BV	0.0556	64.68335	17.29150	0.06862
15	17.213	VV	0.0633	31.18717	7.69399	0.03309
16	17.531	VB	0.0890	9225.30664	1398.08594	9.78711
17	18.080	BV	0.0554	80.81715	23.94234	0.08574
18	18.229	VB	0.0536	85.89868	25.30336	0.09113
19	18.405	BB	0.0796	54.74301	9.44732	0.05808
20	18.683	BB	0.0484	22.68986	7.69117	0.02407
21	19.762	BB	0.0494	403.06433	132.80090	0.42761
22	20.167	BB	0.0599	412.38571	109.54594	0.43750
23	20.361	BB	0.0802	96.08929	17.45191	0.10194
24	21.291	BV	0.0928	267.18930	40.58876	0.28346
25	21.533	VB	0.0709	405.38293	92.84233	0.43007
26	22.019	BB	0.1149	2.34894e4	2828.38867	24.91989
27	22.339	BB	0.0450	683.75275	241.59962	0.72539
28	22.769	BB	0.0497	16.25906	5.32035	0.01725
29	24.396	BB	0.0659	51.44471	11.12801	0.05458
30	24.691	BB	0.0489	343.58005	114.86650	0.36450
31	25.179	BB	0.0474	534.51532	176.19603	0.56707
32	26.297	BB	0.0519	20.85312	6.42469	0.02212
33	27.436	BB	0.0504	16.93258	5.15016	0.01796
34	28.423	BB	0.0601	140.29353	35.47992	0.14884
35	29.111	BB	0.0501	668.61743	216.12306	0.70933

Totals : 9.42598e4 1.43375e4

=====
*** End of Report ***