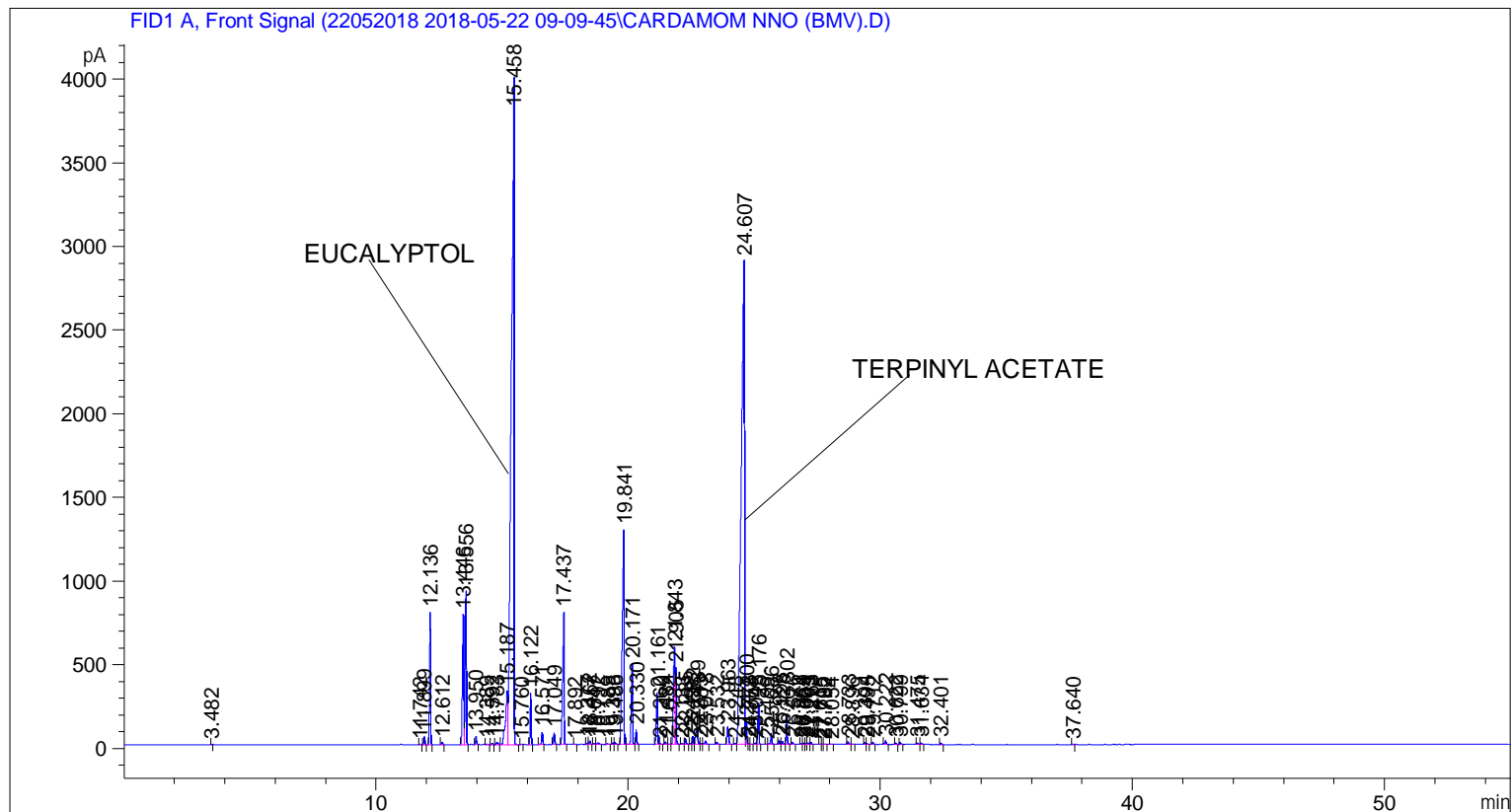


```
=====
Acq. Operator   : SYSTEM                               Seq. Line :    4
Acq. Instrument : BMV_NEW_GC_7820                     Location  : Vial 104
Injection Date  : 5/22/2018 12:45:29 PM                Inj       :    1
                                                    Inj Volume: 0.5 µl
Method         : C:\CHEM32\2\DATA\22052018 2018-05-22 09-09-45\UNIVERSAL F.M (Sequence
Method)
Last changed   : 5/22/2018 9:09:51 AM by SYSTEM
=====
```



=====  
 Area Percent Report  
 =====

```
Sorted By      : Signal
Multiplier    : 1.0000
Dilution      : 1.0000
Do not use Multiplier & Dilution Factor with ISTDs
```

Signal 1: FID1 A, Front Signal

Peak #	RetTime [min]	Type	Width [min]	Area [pA*s]	Height [pA]	Area %
1	3.482	BB	0.0263	6.58099	3.59673	0.00730
2	11.742	BB	0.0435	10.46660	3.75594	0.01161
3	11.899	BB	0.0447	128.68860	45.89882	0.14279
4	12.136	BB	0.0460	2300.17114	790.39783	2.55221
5	12.612	BB	0.0496	44.23370	13.38432	0.04908
6	13.446	BV	0.0613	2965.17163	780.06677	3.29008
7	13.556	VB	0.0498	2885.68652	915.93506	3.20188
8	13.950	BB	0.0476	138.05356	45.25697	0.15318
9	14.389	BB	0.0585	15.24096	4.18199	0.01691
10	14.592	BB	0.0501	26.09863	8.21613	0.02896

Sample Name: CARDAMOM NNO (BMV)

Peak #	RetTime [min]	Type	Width [min]	Area [pA*s]	Height [pA]	Area %
11	14.783	BB	0.0652	57.22632	13.56846	0.06350
12	15.187	BV	0.0915	2128.19043	324.61847	2.36139
13	15.458	VB	0.0966	3.05187e4	3971.72607	33.86276
14	15.760	BB	0.0430	5.98184	2.25362	0.00664
15	16.122	BB	0.0433	856.37164	309.52612	0.95021
16	16.571	BB	0.0455	221.64334	74.98683	0.24593
17	17.049	BB	0.0467	212.68845	69.52898	0.23599
18	17.437	BB	0.0566	3231.68237	792.72632	3.58579
19	17.892	BB	0.0443	6.81518	2.39078	0.00756
20	18.377	BV	0.0455	28.41205	9.61883	0.03153
21	18.462	VB	0.0490	61.65768	18.92392	0.06841
22	18.647	BV	0.0487	15.63541	4.96953	0.01735
23	18.792	VB	0.0630	43.00925	10.67336	0.04772
24	19.189	BB	0.0553	15.26715	4.31293	0.01694
25	19.395	BV	0.0495	29.61039	9.20459	0.03285
26	19.486	VB	0.0576	52.55860	13.73341	0.05832
27	19.841	BV	0.0662	6488.39355	1279.54907	7.19935
28	20.171	VV	0.0511	1694.47729	480.51752	1.88015
29	20.330	VB	0.0463	256.66711	87.27891	0.28479
30	21.161	BV	0.0610	1132.97144	307.12628	1.25712
31	21.260	VB	0.0533	22.83281	6.14928	0.02533
32	21.484	BB	0.0448	50.90190	17.06554	0.05648
33	21.632	BV	0.0490	7.12674	2.24598	0.00791
34	21.843	VV	0.0658	2536.71387	582.68292	2.81467
35	21.905	VB	0.0411	1223.04431	458.31213	1.35706
36	22.133	BV	0.0430	13.58103	4.94771	0.01507
37	22.285	VB	0.0483	111.22374	35.76149	0.12341
38	22.492	BV	0.0488	15.16050	4.80921	0.01682
39	22.582	VV	0.0471	145.60764	48.40474	0.16156
40	22.739	VV	0.0723	528.89368	100.61172	0.58685
41	22.883	VV	0.0618	15.77950	4.02281	0.01751
42	23.078	VB	0.0610	84.63866	20.56178	0.09391
43	23.532	BB	0.0582	45.24644	11.95014	0.05020
44	23.963	BB	0.0689	453.16595	105.94230	0.50282
45	24.248	BV	0.0618	16.63909	4.23586	0.01846
46	24.607	VV	0.1144	2.66187e4	2890.68628	29.53547
47	24.700	VV	0.0442	388.19702	136.35973	0.43073
48	24.773	VV	0.0417	17.55960	6.45783	0.01948
49	24.858	VB	0.0455	6.94229	2.28223	0.00770
50	25.045	BV	0.0489	24.09244	7.61619	0.02673
51	25.176	VB	0.0459	740.69098	247.78682	0.82185
52	25.499	BV	0.0467	8.27034	2.77937	0.00918
53	25.686	VB	0.0490	216.28690	66.37061	0.23999
54	25.998	BV	0.0492	76.38028	23.96785	0.08475
55	26.128	VB	0.0466	51.29583	17.30250	0.05692
56	26.302	BB	0.0469	520.40698	168.88503	0.57743
57	26.526	BB	0.0617	49.92267	11.70994	0.05539
58	26.864	BV	0.0441	10.18183	3.69714	0.01130
59	26.959	VV	0.0474	23.54270	7.53912	0.02612
60	27.064	VV	0.0500	19.16225	5.73160	0.02126
61	27.145	VV	0.0580	39.29390	10.40782	0.04360
62	27.263	VB	0.0485	35.86770	11.14445	0.03980
63	27.615	BV	0.0470	8.28937	2.76115	0.00920
64	27.705	VV	0.0479	8.67418	2.73957	0.00962

Sample Name: CARDAMOM NNO (BMV)

Peak #	RetTime [min]	Type	Width [min]	Area [pA*s]	Height [pA]	Area %
65	27.782	VB	0.0571	9.71711	2.63087	0.01078
66	28.054	BB	0.0461	6.49534	2.36116	0.00721
67	28.733	BB	0.0582	54.13260	14.60363	0.06006
68	28.896	BB	0.0547	9.01695	2.58376	0.01000
69	29.394	BV	0.0481	33.65399	10.86401	0.03734
70	29.495	VB	0.0519	12.33432	3.51994	0.01369
71	29.712	BB	0.0498	41.72818	12.86629	0.04630
72	30.222	BB	0.0571	86.91789	22.48273	0.09644
73	30.622	BB	0.0478	24.25713	7.90167	0.02692
74	30.799	BB	0.0490	37.72266	12.22784	0.04186
75	31.475	BB	0.0500	32.07467	10.10864	0.03559
76	31.634	BB	0.0512	28.43442	8.68206	0.03155
77	32.401	BB	0.0494	27.00926	8.43477	0.02997
78	37.640	BB	0.0475	8.46067	2.70583	0.00939

Totals : 9.01247e4 1.55538e4

=====  
\*\*\* End of Report \*\*\*