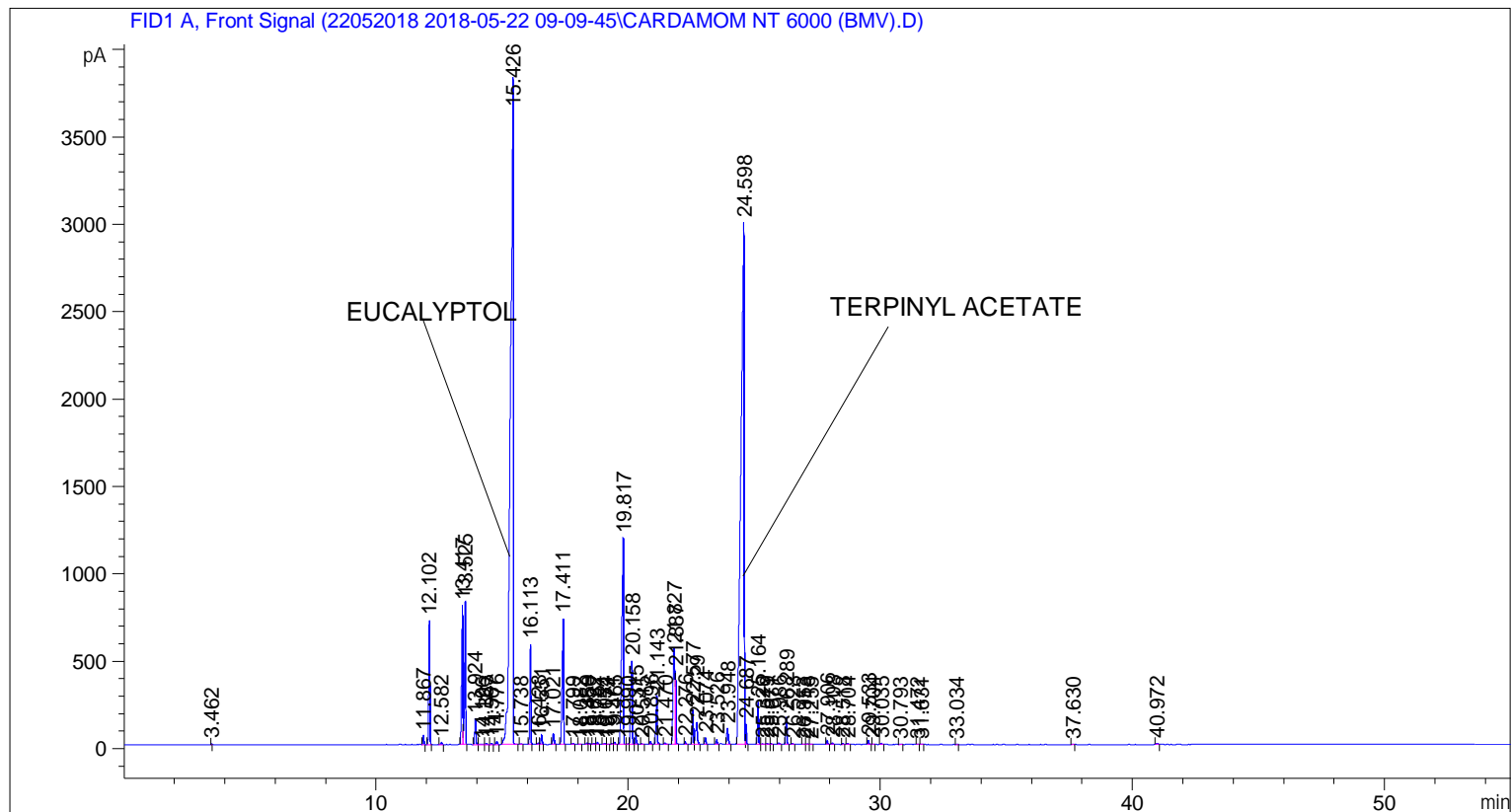


```
=====
Acq. Operator   : SYSTEM                               Seq. Line :    6
Acq. Instrument : BMV_NEW_GC_7820                     Location  : Vial 106
Injection Date  : 5/22/2018 3:33:54 PM                 Inj       :    1
                                                    Inj Volume: 0.5 µl
Method          : C:\CHEM32\2\DATA\22052018 2018-05-22 09-09-45\UNIVERSAL F.M (Sequence
                  Method)
Last changed    : 5/22/2018 9:09:51 AM by SYSTEM
=====
```



=====  
 Area Percent Report  
 =====

```
Sorted By      : Signal
Multiplier     : 1.0000
Dilution       : 1.0000
Do not use Multiplier & Dilution Factor with ISTDs
```

Signal 1: FID1 A, Front Signal

Peak #	RetTime [min]	Type	Width [min]	Area [pA*s]	Height [pA]	Area %
1	3.462	BB	0.0236	7.64791	4.79019	0.00887
2	11.867	BB	0.0438	148.05086	52.67819	0.17162
3	12.102	BB	0.0447	2051.12744	709.87134	2.37765
4	12.582	BB	0.0489	40.10878	12.35924	0.04649
5	13.417	BV	0.0580	2929.08130	793.90363	3.39536
6	13.525	VB	0.0464	2480.59937	817.39447	2.87549
7	13.924	BB	0.0475	446.69843	147.00351	0.51781
8	14.196	BV	0.0923	18.41117	2.64129	0.02134
9	14.363	VB	0.0583	29.30147	8.07634	0.03397
10	14.567	BB	0.0487	16.04580	5.09796	0.01860

Peak #	RetTime [min]	Type	Width [min]	Area [pA*s]	Height [pA]	Area %
11	14.776	BB	0.0617	61.78558	15.43238	0.07162
12	15.426	BB	0.0984	2.97600e4	3800.52148	34.49745
13	15.738	BB	0.0417	9.17308	3.60814	0.01063
14	16.113	BB	0.0443	1682.53418	572.59467	1.95038
15	16.428	BV	0.0531	30.56348	9.36983	0.03543
16	16.551	VB	0.0469	171.96892	57.54062	0.19934
17	17.021	BB	0.0607	245.39055	62.69850	0.28445
18	17.411	BB	0.0549	2825.97290	718.92505	3.27584
19	17.799	BB	0.0435	16.79345	6.02962	0.01947
20	18.082	BB	0.0440	9.45080	3.33810	0.01096
21	18.359	BV	0.0491	27.20855	8.80532	0.03154
22	18.450	VB	0.0469	20.28737	6.59678	0.02352
23	18.632	BB	0.0482	14.27942	4.60641	0.01655
24	18.767	BB	0.0517	35.46407	10.43112	0.04111
25	19.054	BV	0.0734	28.12847	6.14113	0.03261
26	19.172	VB	0.0503	10.41460	3.09015	0.01207
27	19.371	BV	0.0527	17.93314	5.13545	0.02079
28	19.465	VB	0.0582	48.93743	12.90988	0.05673
29	19.817	BV	0.0658	5830.71240	1176.89575	6.75891
30	19.990	VV	0.0555	14.19716	3.98648	0.01646
31	20.158	VV	0.0571	1976.06384	478.82364	2.29063
32	20.315	VB	0.0447	194.80836	67.35641	0.22582
33	20.545	BB	0.0494	12.00857	3.64979	0.01392
34	20.896	BB	0.0474	50.08841	15.62112	0.05806
35	21.143	BB	0.0537	987.24658	276.45111	1.14441
36	21.470	BB	0.0494	25.34294	7.90725	0.02938
37	21.827	BV	0.0641	2304.21216	547.09534	2.67102
38	21.887	VB	0.0407	1129.01221	416.12863	1.30874
39	22.276	BB	0.0491	43.41492	14.02812	0.05033
40	22.577	BV	0.0482	596.29773	197.46680	0.69122
41	22.729	VB	0.0671	603.96527	123.43684	0.70011
42	23.074	BB	0.0490	116.75970	36.83720	0.13535
43	23.526	BV	0.0529	86.69790	25.32468	0.10050
44	23.948	BB	0.0644	383.12350	92.43256	0.44411
45	24.598	BV	0.1127	2.67620e4	2982.64722	31.02226
46	24.687	VB	0.0428	316.42462	115.95310	0.36680
47	25.164	BB	0.0466	714.57562	241.17305	0.82833
48	25.329	BB	0.0710	14.78352	2.87340	0.01714
49	25.519	BB	0.0738	27.97081	5.64300	0.03242
50	25.671	BB	0.0465	13.87723	4.69065	0.01609
51	25.986	BB	0.0505	29.71638	9.50410	0.03445
52	26.289	BB	0.0483	487.84079	156.78387	0.56550
53	26.528	BB	0.0537	24.29601	6.96276	0.02816
54	26.953	BB	0.0582	10.02853	2.58907	0.01162
55	27.118	BV	0.0694	17.67315	3.71969	0.02049
56	27.255	VB	0.0499	7.91728	2.37723	0.00918
57	27.906	BB	0.0470	67.74532	22.59475	0.07853
58	28.108	BB	0.0532	26.36470	7.65338	0.03056
59	28.518	BB	0.0463	13.42835	4.56565	0.01557
60	28.704	BB	0.0586	24.00010	6.42912	0.02782
61	29.533	BB	0.0501	80.45388	24.66626	0.09326
62	29.704	BB	0.0464	11.06968	3.65040	0.01283
63	30.035	BB	0.0535	13.02496	3.85059	0.01510
64	30.793	BB	0.0550	9.87636	2.81037	0.01145

Peak #	RetTime [min]	Type	Width [min]	Area [pA*s]	Height [pA]	Area %
65	31.472	BB	0.0483	7.14082	2.35924	0.00828
66	31.631	BB	0.0499	7.47377	2.23956	0.00866
67	33.034	BB	0.0509	7.19409	2.10432	0.00834
68	37.630	BB	0.0504	9.65141	3.09512	0.01119
69	40.972	BB	0.0587	25.31575	6.76436	0.02935

Totals : 8.62671e4 1.49727e4

=====

\*\*\* End of Report \*\*\*