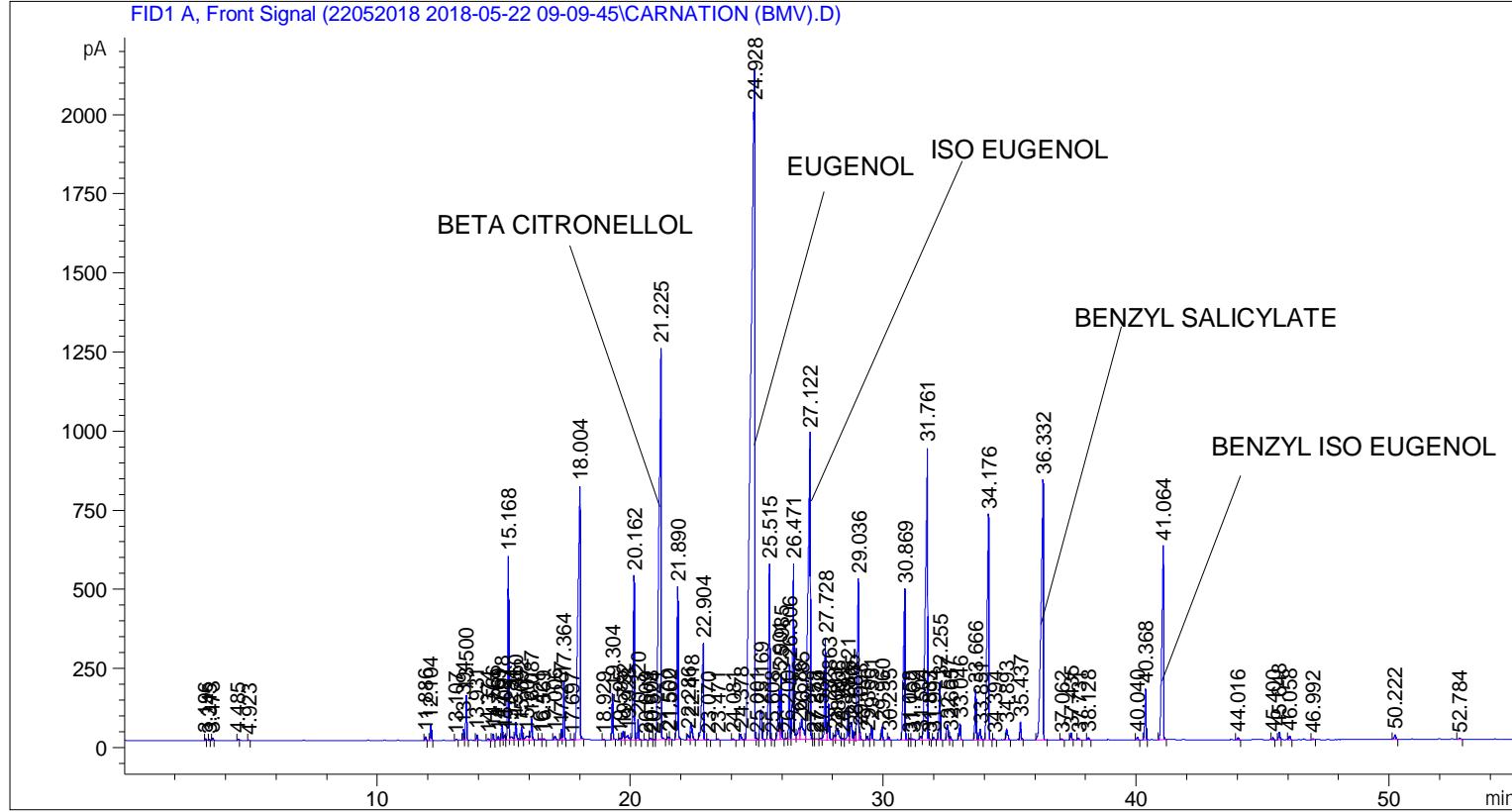


```

=====
Acq. Operator   : SYSTEM                               Seq. Line :    5
Acq. Instrument : BMV_NEW_GC_7820                     Location  : Vial 105
Injection Date  : 5/22/2018 2:07:02 PM                Inj       :    1
                                                    Inj Volume: 0.5 µl

Method          : C:\CHEM32\2\DATA\22052018 2018-05-22 09-09-45\UNIVERSAL F.M (Sequence
                  Method)
Last changed    : 5/22/2018 9:09:51 AM by SYSTEM
  
```



Area Percent Report

```

Sorted By      : Signal
Multiplier     : 1.0000
Dilution       : 1.0000
Do not use Multiplier & Dilution Factor with ISTDs
  
```

Signal 1: FID1 A, Front Signal

Peak #	RetTime [min]	Type	Width [min]	Area [pA*s]	Height [pA]	Area %
1	3.196	BB	0.0265	9.18191	4.97564	0.01072
2	3.345	BB	0.0292	5.44836	2.74027	0.00636
3	3.473	BB	0.0281	15.41395	7.78579	0.01799
4	4.485	BB	0.0327	9.67021	4.22625	0.01129
5	4.923	BB	0.0329	4.49257	2.10835	0.00524
6	11.886	BB	0.0443	33.27083	11.67161	0.03884
7	12.104	BB	0.0422	143.88753	52.14643	0.16796
8	13.107	BB	0.0558	12.01150	3.27463	0.01402
9	13.394	BV	0.0440	94.39713	34.42797	0.11019
10	13.500	VB	0.0439	397.28113	140.74588	0.46376

Sample Name: CARNATION (BMV)

Peak #	RetTime [min]	Type	Width [min]	Area [pA*s]	Height [pA]	Area %
11	13.931	BV	0.0427	48.86657	17.44902	0.05704
12	14.374	BB	0.0526	16.62463	5.02945	0.01941
13	14.566	BB	0.0426	59.70218	21.36005	0.06969
14	14.769	BB	0.0433	35.86399	12.95178	0.04186
15	14.918	BV	0.0449	151.13052	52.00769	0.17642
16	15.027	VV	0.0519	54.30318	15.87224	0.06339
17	15.168	VV	0.0443	1708.44788	581.43524	1.99432
18	15.284	VV	0.0994	79.59306	10.62101	0.09291
19	15.460	VB	0.0543	202.60275	55.93167	0.23650
20	15.692	BV	0.0435	118.57693	41.27346	0.13842
21	15.907	VV	0.1276	108.80061	11.91060	0.12701
22	16.087	VB	0.0522	232.48851	67.47908	0.27139
23	16.421	BB	0.0438	15.61041	5.38870	0.01822
24	16.569	BB	0.0475	18.30128	5.84404	0.02136
25	17.006	BB	0.0672	58.33138	12.33423	0.06809
26	17.267	BV	0.0432	94.76810	34.38694	0.11063
27	17.364	VB	0.0446	537.28186	186.37778	0.62718
28	17.697	BB	0.0491	9.18750	2.89005	0.01072
29	18.004	BB	0.0810	5011.77246	801.18243	5.85037
30	18.929	BB	0.0423	5.96734	2.22521	0.00697
31	19.304	BB	0.0438	413.46790	147.20451	0.48265
32	19.595	BV	0.0455	18.28837	6.36045	0.02135
33	19.732	VV	0.0561	109.14498	28.88848	0.12741
34	19.928	VV	0.0963	113.94891	14.71667	0.13302
35	20.162	VV	0.0519	1864.67981	519.63586	2.17669
36	20.320	VB	0.0480	205.10896	64.64801	0.23943
37	20.609	BB	0.0461	5.49817	1.93524	0.00642
38	20.808	BV	0.0646	27.84027	6.05931	0.03250
39	20.924	VV	0.0459	8.82138	2.86651	0.01030
40	21.225	VB	0.0761	7426.76318	1236.06079	8.66945
41	21.500	BV	0.0456	27.29217	9.20768	0.03186
42	21.562	VB	0.0392	18.44663	7.13028	0.02153
43	21.890	BB	0.0509	1730.71362	481.64008	2.02031
44	22.286	BV	0.0609	73.37004	16.80538	0.08565
45	22.418	VB	0.0654	258.31186	55.35106	0.30153
46	22.904	BV	0.0706	1557.18494	304.99042	1.81774
47	23.070	VB	0.0483	7.59397	2.37299	0.00886
48	23.471	BB	0.0510	12.26548	3.57842	0.01432
49	24.081	BB	0.0586	16.48398	4.31480	0.01924
50	24.378	BB	0.0653	73.96254	17.15397	0.08634
51	24.928	BV	0.1322	2.25013e4	2113.63794	26.26633
52	25.001	VV	0.0422	14.84555	5.05726	0.01733
53	25.169	VB	0.0763	522.26831	94.82991	0.60966
54	25.515	BV	0.0514	1878.01135	556.02234	2.19225
55	25.608	VB	0.0316	4.85911	2.61982	0.00567
56	25.901	BV	0.0608	676.47858	161.60858	0.78967
57	25.985	VB	0.0479	621.84912	207.91924	0.72590
58	26.200	BV	0.0327	5.19420	2.67137	0.00606
59	26.306	VV	0.0474	720.25317	237.29723	0.84077
60	26.471	VV	0.0512	1962.08801	555.51874	2.29040
61	26.686	VV	0.0874	231.87930	35.40774	0.27068
62	26.785	VV	0.0856	428.34552	63.61268	0.50002
63	27.122	VV	0.0782	5817.59570	966.47070	6.79103
64	27.258	VV	0.0538	10.75599	3.07866	0.01256

Sample Name: CARNATION (BMV)

Peak #	RetTime [min]	Type	Width [min]	Area [pA*s]	Height [pA]	Area %
65	27.373	VV	0.0694	18.77603	3.88360	0.02192
66	27.534	VV	0.0599	17.19608	4.27643	0.02007
67	27.728	VV	0.0503	1050.08350	320.14621	1.22579
68	27.863	VB	0.0532	405.24127	112.00457	0.47305
69	28.083	BV	0.0590	64.67241	16.04240	0.07549
70	28.206	VV	0.0861	238.61006	37.06421	0.27854
71	28.393	VV	0.0581	21.30008	5.76542	0.02486
72	28.621	VV	0.0506	360.36459	108.95119	0.42066
73	28.765	VV	0.0733	297.64053	55.70117	0.34744
74	28.887	VV	0.0459	76.20905	24.74205	0.08896
75	29.036	VV	0.0578	2130.01563	509.45288	2.48642
76	29.093	VB	0.0341	58.16965	25.95282	0.06790
77	29.390	BV	0.0484	35.63416	11.43251	0.04160
78	29.551	VB	0.0510	145.65115	44.76709	0.17002
79	29.960	BB	0.0483	133.10391	42.80987	0.15538
80	30.235	BB	0.0507	27.13009	8.17609	0.03167
81	30.869	BB	0.0614	2271.87573	478.30145	2.65202
82	31.058	BV	0.0499	18.19535	5.74789	0.02124
83	31.162	VB	0.0751	21.04115	4.08329	0.02456
84	31.504	BV	0.0604	48.41977	11.90995	0.05652
85	31.761	VV	0.0714	5173.12891	922.99829	6.03873
86	31.833	VB	0.0354	10.20729	4.34174	0.01192
87	31.994	BB	0.0537	26.56730	7.25215	0.03101
88	32.255	BB	0.0488	576.13074	182.89592	0.67253
89	32.547	BV	0.0664	203.52515	47.14124	0.23758
90	32.665	VB	0.0499	36.96909	11.38512	0.04315
91	33.046	BB	0.0519	174.82281	51.13469	0.20408
92	33.666	BV	0.0518	520.39319	160.65735	0.60747
93	33.851	VB	0.0589	138.59724	33.06149	0.16179
94	34.176	BB	0.0646	3388.87305	710.98090	3.95592
95	34.394	BB	0.0474	10.81994	3.47080	0.01263
96	34.893	BB	0.0631	155.87798	35.55766	0.18196
97	35.437	BB	0.0533	183.67935	54.58549	0.21441
98	36.332	BB	0.0786	4966.42773	821.21582	5.79744
99	37.062	BB	0.0566	16.91055	4.33126	0.01974
100	37.435	BB	0.0513	69.83838	21.27172	0.08152
101	37.731	BB	0.0626	25.92302	6.35375	0.03026
102	38.128	BB	0.0514	26.22708	7.96534	0.03062
103	40.040	BB	0.0507	26.94843	8.11513	0.03146
104	40.368	BB	0.0500	540.52179	161.52702	0.63096
105	41.064	BB	0.0656	3024.63354	613.06091	3.53073
106	44.016	BB	0.0536	25.48926	7.15004	0.02975
107	45.400	BB	0.0529	22.70376	6.63186	0.02650
108	45.648	BB	0.0530	93.62242	25.97904	0.10929
109	46.058	BB	0.0553	45.03796	12.14537	0.05257
110	46.992	BB	0.0517	8.77298	2.78522	0.01024
111	50.222	BB	0.0655	57.78587	13.61657	0.06745
112	52.784	BB	0.0742	17.95560	3.72895	0.02096

Totals : 8.56659e4 1.59173e4

*** End of Report ***