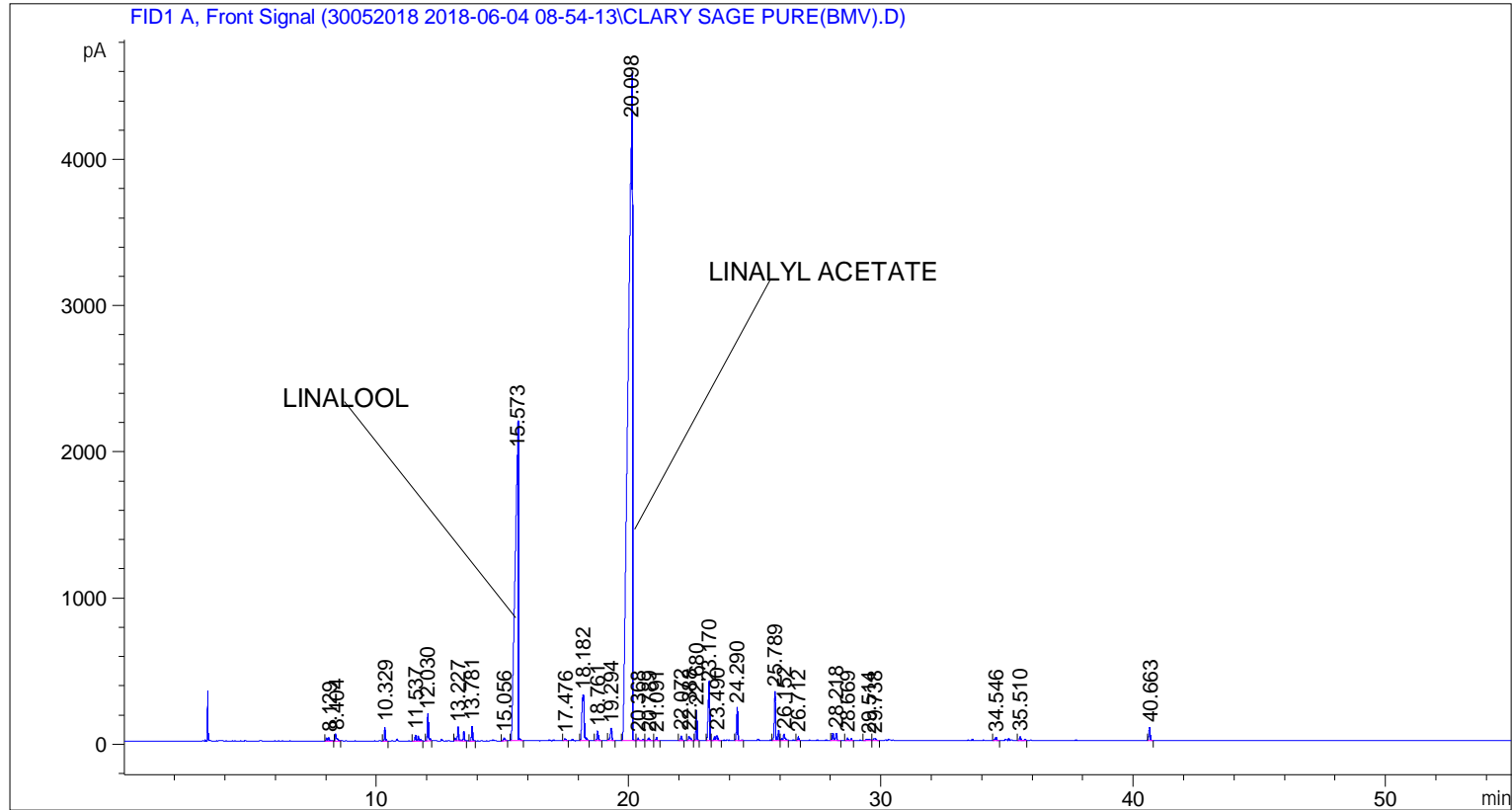


```

=====
Acq. Operator   : SYSTEM                               Seq. Line :    2
Acq. Instrument : BMV_NEW_GC_7820                     Location  : Vial 102
Injection Date  : 6/4/2018 10:12:23 AM                Inj       :    1
                                                    Inj Volume: 0.5 µl

Acq. Method     : C:\CHEM32\2\DATA\30052018 2018-06-04 08-54-13\UNIVERSAL F.M
Last changed    : 6/4/2018 8:54:21 AM by SYSTEM
Analysis Method : C:\CHEM32\2\DATA\30052018 2018-06-04 08-54-13\UNIVERSAL F.M (Sequence
Method)
Last changed    : 6/4/2018 12:51:35 PM by SYSTEM
                  (modified after loading)
Additional Info  : Peak(s) manually integrated
  
```



=====
 Area Percent Report
 =====

```

Sorted By       :      Signal
Multiplier      :      1.0000
Dilution        :      1.0000
Do not use Multiplier & Dilution Factor with ISTDs
  
```

Signal 1: FID1 A, Front Signal

Peak #	RetTime [min]	Type	Width [min]	Area [pA*s]	Height [pA]	Area %
1	8.129	BB	0.0873	131.37903	21.50155	0.15768
2	8.404	BB	0.0738	184.69005	37.30368	0.22166
3	10.329	BB	0.0518	250.10246	91.77574	0.30017
4	11.537	BB	0.0858	236.02452	39.45337	0.28327
5	12.030	BB	0.0522	558.25586	180.07863	0.67000
6	13.227	BB	0.0840	517.74615	88.81599	0.62138

Peak #	RetTime [min]	Type	Width [min]	Area [pA*s]	Height [pA]	Area %
7	13.781	BB	0.0536	291.40103	101.09995	0.34973
8	15.056	BB	0.0770	84.52971	17.28866	0.10145
9	15.573	BB	0.1368	1.83171e4	1964.51416	21.98366
10	17.476	BB	0.0724	62.11763	13.82497	0.07455
11	18.182	BB	0.1033	2014.05774	311.92242	2.41721
12	18.761	BB	0.0715	252.90419	62.12535	0.30353
13	19.294	BB	0.0787	403.29559	85.98374	0.48402
14	20.098	BV	0.1956	5.34164e4	4222.14844	64.10874
15	20.368	VB	0.0870	113.66753	18.66892	0.13642
16	20.789	BB	0.0767	95.70435	19.68293	0.11486
17	21.091	BB	0.0576	75.28349	23.38461	0.09035
18	22.072	BB	0.0577	99.19375	30.66891	0.11905
19	22.388	BB	0.0944	170.09566	26.65672	0.20414
20	22.680	BB	0.0515	617.38202	202.86739	0.74096
21	23.170	BV	0.0709	1594.47583	365.42972	1.91364
22	23.490	VB	0.1013	239.27696	34.33920	0.28717
23	24.290	BB	0.0600	737.47760	215.10739	0.88510
24	25.789	BV	0.0663	1313.86682	331.25174	1.57686
25	26.152	VB	0.0837	239.84180	43.90842	0.28785
26	26.712	BB	0.0577	87.49171	24.47300	0.10500
27	28.218	BB	0.1039	356.53967	49.57705	0.42791
28	28.669	BB	0.0923	104.10919	16.79073	0.12495
29	29.514	BV	0.1287	99.92494	10.72181	0.11993
30	29.738	VB	0.1337	100.53198	11.52833	0.12066
31	34.546	BB	0.0696	87.71917	22.42578	0.10528
32	35.510	BB	0.0746	124.67755	26.62119	0.14963
33	40.663	BB	0.0653	344.24689	88.57726	0.41316

Totals : 8.33215e4 8800.51775

=====
*** End of Report ***